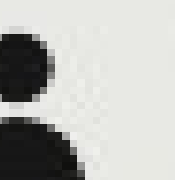
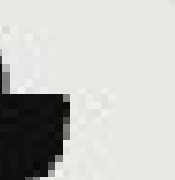




1ST ANNUAL

ILLINOIS TOLLWAY

# PAVING THE ROAD TO SUCCESS INVITATIONAL





# YOUR VOTE MATTERS!

---

PLEASE SCAN THE QR CODE  
TO CAST YOUR VOTE.



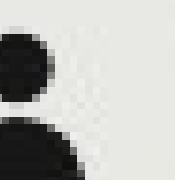
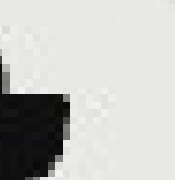
# CATEGORY: BEST ELEVATOR PITCH

## TEAM W-INNER CITY: FOREMOST IMPROVEMENTS

### Roofing



A DIVISION OF **FI** FOREMOST IMPROVEMENTS



CATEGORY: BEST ELEVATOR PITCH

# TEAM TECHNICAL RESISTANCE: METROPOLITAN STEEL

Bridge & Steel Erection





# CATEGORY: BEST ELEVATOR PITCH

## VOTE NOW!

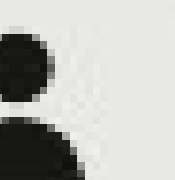


**W-Inner City:  
Foremost Improvements**

**Technical Resistance:  
Metropolitan Steel**

0% W-Inner City

0% Technical Resistance



# CATEGORY: BEST CAPABILITIES STATEMENT

## TEAM W-INNER CITY: SECONDARY SOLUTIONS

Technical Products & Services, Vision,  
MH Robotics, Precision Machined Components





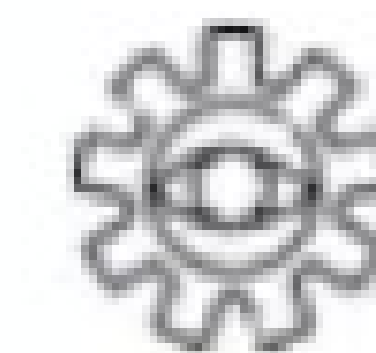
# CATEGORY: BEST CAPABILITIES STATEMENT

## About Secondary Solutions, Inc. (SSI)

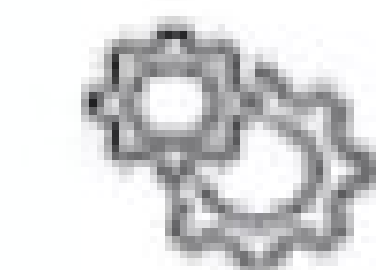
Secondary Solutions, Inc. is a Certified Minority Business Enterprise through the National Minority Business Development Council, a Certified Veteran Owned Small Business, hold a Federal Firearms License, ITAR compliant, and a ISO9001:2015 certified business.

## Manufacturing Core Capabilities

### Vision Integration Systems



In-line/off-line Inspection Systems (Machine Visions, Artificial Intelligence, 3-D Technology), Vision Tunnels for products (identification with data-logging), Custom Vision Applications & Custom Controls Engineering



### Precision Machining (CNC)

CNC Milling, Turning, Secondary operations



### Material Handling Robotics

In-line/off-line Inspection Systems (Machine Visions, Artificial Intelligence, 3-D Technology), Vision Tunnels for products (identification with data-logging), Custom Vision Applications & Custom Controls Engineering

## Construction Core Capabilities

### Building Automation



we specialize in advanced automation solutions, and now we're bringing that expertise to building automation. Our control systems optimize HVAC, lighting, security, and energy management to ensure your facility operates efficiently and cost-effectively.



we offer sound abatement ceiling solutions to help improve acoustics and reduce noise levels in your facility. Whether you're looking to enhance workplace comfort, minimize equipment noise, or meet specific compliance requirements, we can design and install a system tailored to your needs.



### Sales & Distribution

Supply Chain Management

### WHY SSI?

Our passion and expertise shine through in our daily business practices. We aim to serve our customers, employees, and community with compassion, integrity, enthusiasm, and excellence.

### Satisfied Customers



Secondary Solutions, Inc

### CREDENTIALS:

MBE (In Process)  
VOSB (Veteran)  
NVBDC (Veteran)  
FFL (Fire Arms)  
ISO 9001:2015  
ITAR Compliant  
AS 9100 (Pending, 2025)

### DUNS CODE:

009861193

### CAGE CODE: UE ID

8L850 YYN6H9KEAWU6

### NAICS CODES:

332710 541380  
541511 423830  
541330 423840

### CONTACT INFORMATION:

Robert Demo, President  
(815)222-7315  
bdemo@ssi-co.com

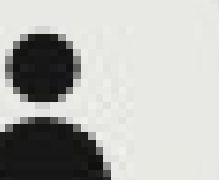
David Demo, Sales Engineer  
(815)218-8446  
ddemo@ssi-co.com

### BUSINESS INFORMATION:

Headquarters  
Secondary Solutions, Inc.  
4620 Hydraulic Rd. Rockford,  
IL 61109

### Physical

Secondary Solutions, Inc.  
612 Harrison Ave.  
Rockford, IL 61104



# CATEGORY: BEST CAPABILITIES STATEMENT

## TEAM TECHNICAL RESISTANCE: ALLSTATE CONCRETE AND DEMOLITION INC.

Sawcutting & Preformed Joint Sealing





# CATEGORY: BEST CAPABILITIES STATEMENT



**Mike Seay**  
President & Founder  
Mseay@allstateconcretecutting.com

847-973-9752  
847-973-9748

allstateconcretecutting.com

1425 Howard St.  
Elk Grove Village, IL 60007

514 Rollins Rd  
Ingleside, IL 60041





**NAICS CODES**

238990	238390	561990
236210	237130	238910
236220	237310	
237110	237990	

**DUNS NUMBER**  
01-700-2208



## ABOUT

Allstate Concrete Cutting Inc. is a full union shop, signatory with Laborers Local 1, Local 2, Local 76, Local 152, Local 225, Operators Local 150 and Plumbers Local 130. Allstate has been in business for 13 years with a high success rate of performing efficiently, professionally, and safely. Allstate has an EMR rating of .75 and 0 OSHA-Recordable incidents. We will continuously strive to keep this incredible safety record. During our 14 years of business Allstate has grown to become one of Chicago's most reliable demolition & concrete cutting contractors. We always want set the bar higher and higher each year to improve our services and capabilities so that we can meet any needs you might have.

## MISSION STATEMENT

Allstate was founded on the principle of giving back to those in need. To achieve this, Allstate maintains the highest levels of professionalism and integrity with relationships that are cultivated through repeat and referral business. This allows us to grow continuously and expand employment and advancement opportunities to all communities throughout the Chicago-land area.

## VISION STATEMENT

The vision of Allstate is to deliver the highest level of quality construction services at fair and competitive market prices. This will ensure the longevity of our company and allow Allstate to donate generously to local community organizations and causes that relate to Allstate's Mission. Having expanded our services into Longitudinal Joint Sealing, Allstate looks to expand our reach to new clients and provide top quality concrete cutting & demolition services.

## SERVICES

**Road & Electric Sawing**  
Allstate provides roads, bridge deck & runway sawing with the capability to cut 32" deep. We can also provide the same service for interior saw cutting work, up to 25".

**Coring**  
Allstate has multiple coring equipment for walls, floors or sewer taps.

**Wall Sawing**  
Since 2022, Allstate has upgraded wall saw units have the capability to run a 72" blade with a 31" saw cutting depth.

**Longitudinal Joint Sealing**  
As of 2022, Allstate has the equipment to apply LJS asphalt binding material to all IDOT & ISTHA projects. Since 2022, we've been able to complete over 2,000,000 feet.

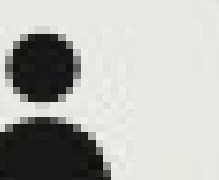
**Demolition**  
We have the expertise to provide Interior, MEP demolition & Mechanical haul away services for Hospitals, Schools & many other sites.

**Other Services**

- Concrete & Asphalt Patching
- Interior Excavation
- Concrete Scanning
- Hydraulic sawing
- Electric hand sawing
- Bollard Installation
- Concrete Sealing
- Partial-depth Patching

## CLIENTS & JOBS

- Plote Construction
- Clayco Construction Corp.
- Turner Paschen Avalation Partners
- F.H. Paschen
- Walsh Construction
- Gallagher Asphalt
- RailWorks Tracks Services
- Builders Asphalt
- Illinois Department of Transportation
- CTA Red & Purple Modernization
- Abbott Presidential Suites
- O'Hare TP 38 - A & B Taxiway
- O'Hare TP 39 - LCE "C" Extension
- USPS - Forest Park
- O'Hare T5 Various Projects



# CATEGORY: BEST CAPABILITIES STATEMENT

## VOTE NOW!



**W-Inner City:  
Secondary Solutions**

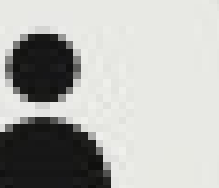
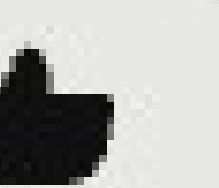
**Technical Resistance:  
Allstate Concrete & Demolition**

---

0 W-Inner City

---

0 Techninal Resistance





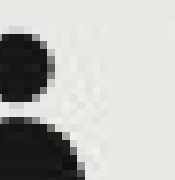
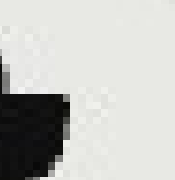
# CATEGORY: BEST SOCIAL MEDIA POST

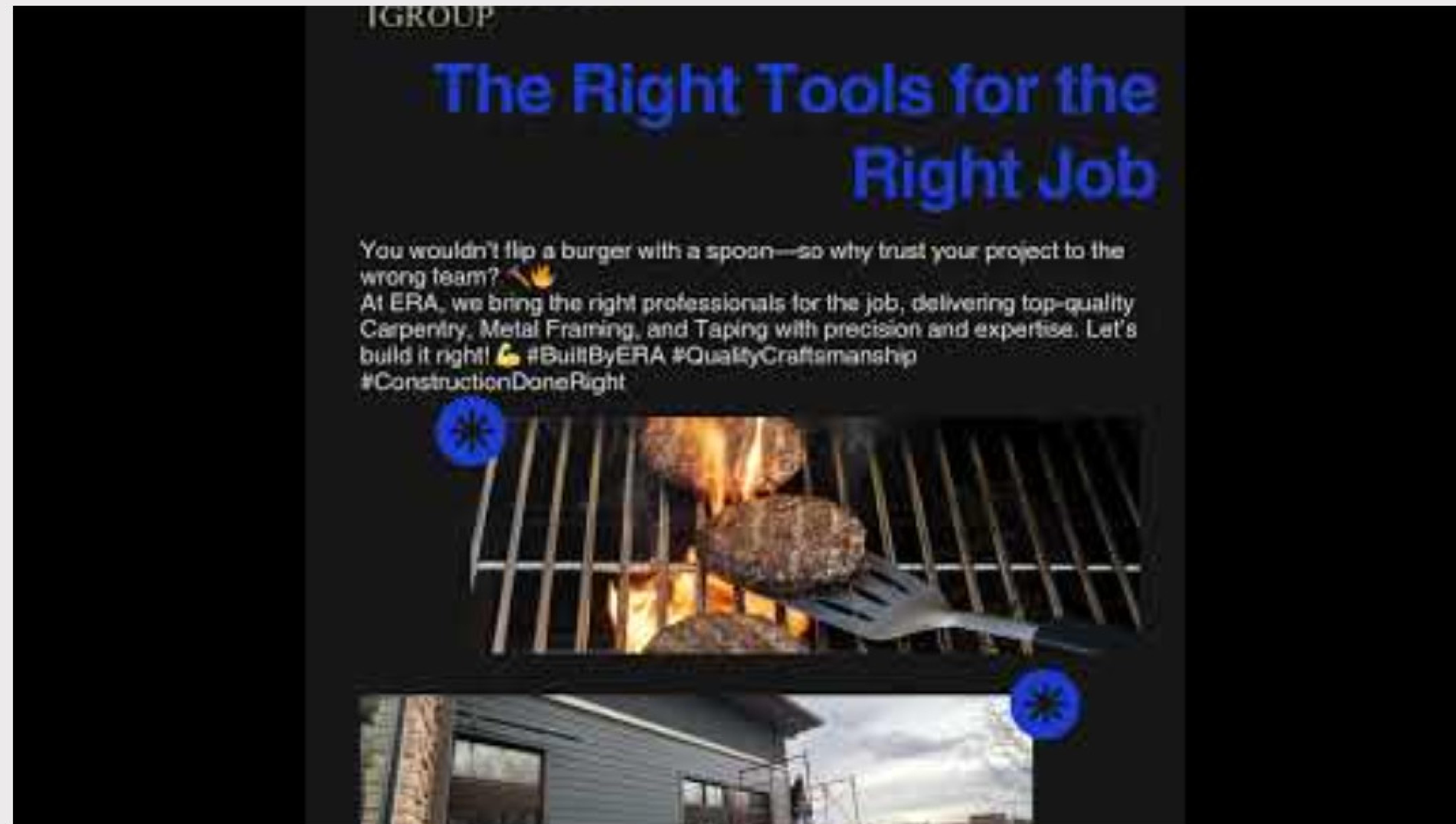
## **TEAM W-INNER CITY: ERA CONSTRUCTION GROUP**

**General Contracting, Subcontracting, & Siding**

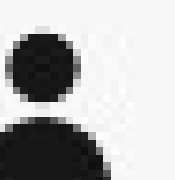
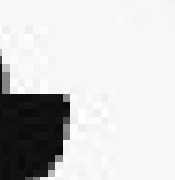
The logo for ERA Construction Group is displayed on a dark blue square background. It consists of the words "ERA", "CONSTRUCTION", and "GROUP" stacked vertically in a gold-colored serif font. A thin vertical gold line is positioned to the left of the text.

**ERA  
CONSTRUCTION  
GROUP**





Category: Best Social Media Post

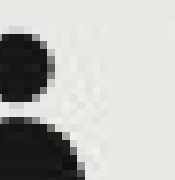
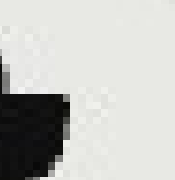




CATEGORY: BEST SOCIAL MEDIA POST

# TEAM TECHNICAL RESISTANCE: VETERANS VAC SERVICES

## Hydro Excavation

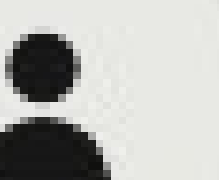


# CATEGORY: BEST SOCIAL MEDIA POST



**VACUUM TRUCK  
HYDRO EXCAVATION  
SERVICES**

**DELIVERING  
QUALITY VACUUM  
TRUCK SERVICES  
WITH COMMITMENT  
TO CUSTOMER  
SATISFACTION**





# CATEGORY: BEST SOCIAL MEDIA POST

**VOTE NOW!**



**W-Inner City:  
ERA Construction Group**

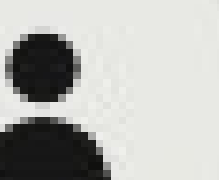
**Technical Resistance:  
Veterans Vac Services**

0

W-Inner City

0

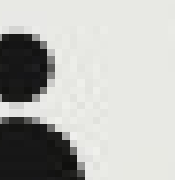
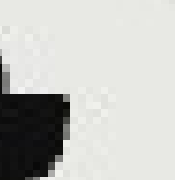
Technical Resistance



# CATEGORY: BEST SOCIAL MEDIA VIDEO

## **TEAM W-INNER CITY: A&W CONTRACTORS**

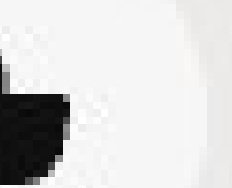
**General Contracting, Subcontracting &  
Compliance Services**







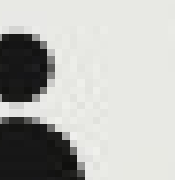
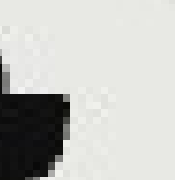
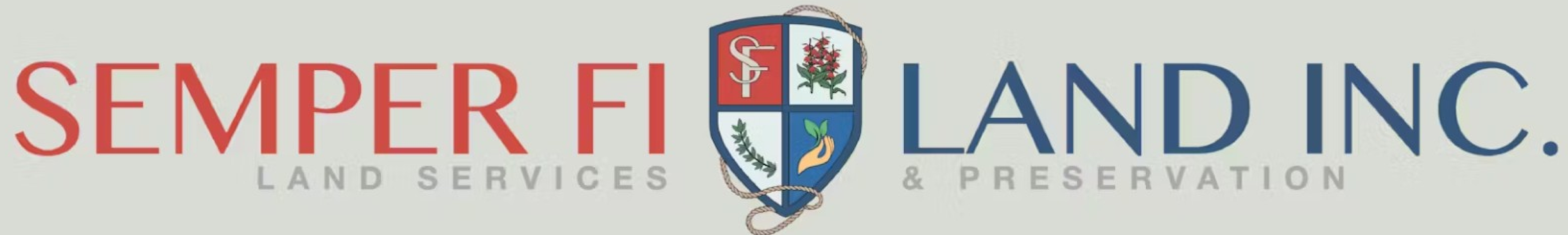
Category: Best Social Media Video



# CATEGORY: BEST SOCIAL MEDIA VIDEO

## TEAM TECHNICAL RESISTANCE: SEMPER FI LAND INC.

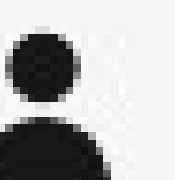
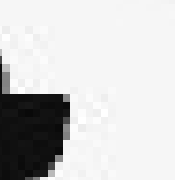
Excavation, Earthwork, Ecosystem Restoration  
& Landscaping







Category: Best Social Media Video



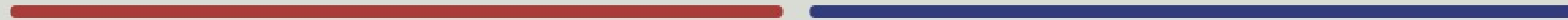
# CATEGORY: BEST SOCIAL MEDIA VIDEO

**VOTE NOW!**

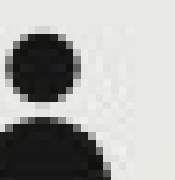
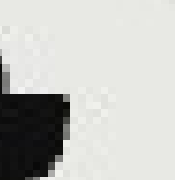


**W-Inner City:  
A&W Contractors**

**Technical Resistance:  
Semper Fi Land Inc.**



W-Inner City: A&W Contractors

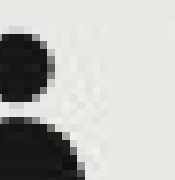
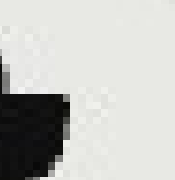




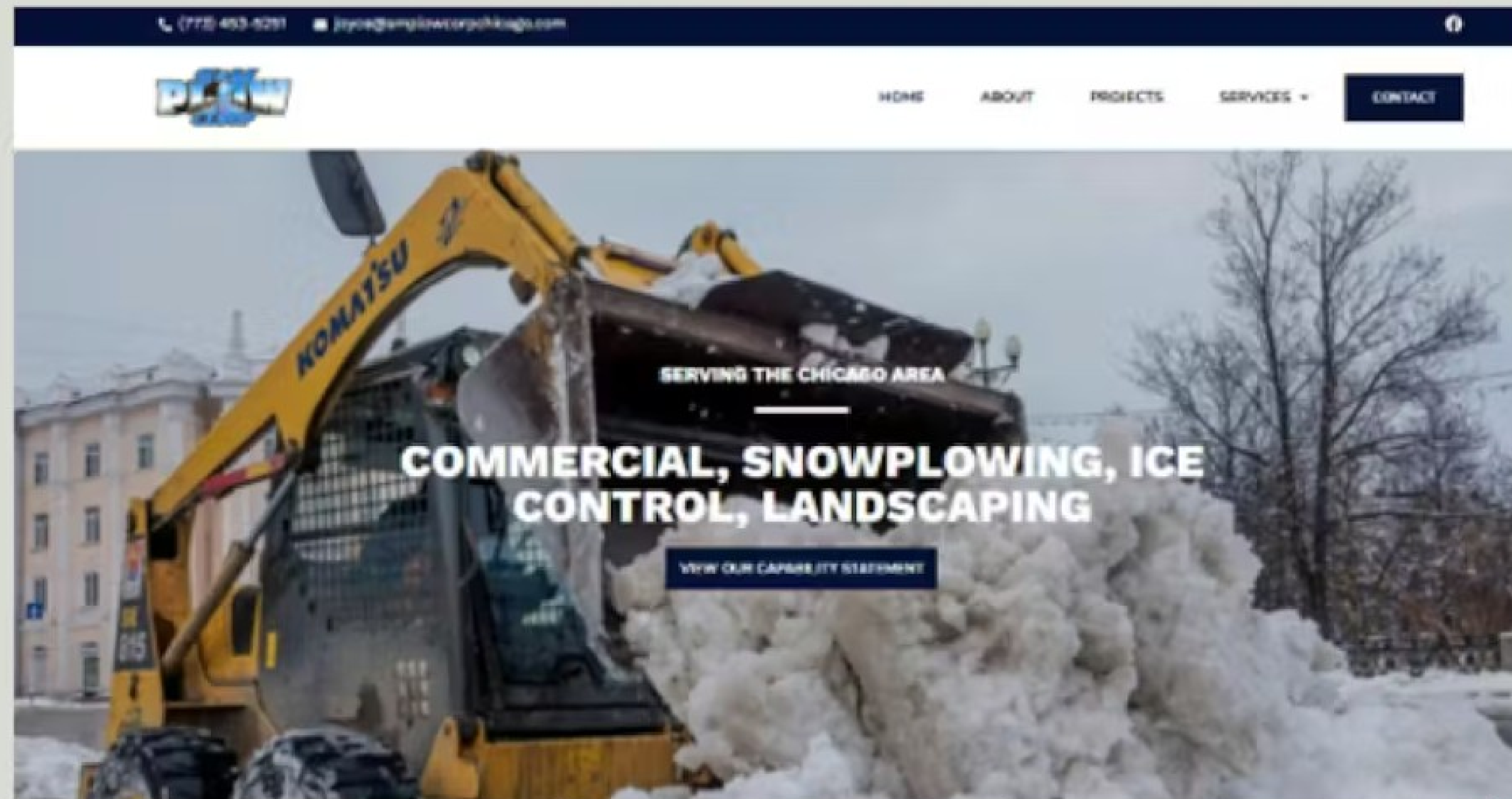
CATEGORY: BEST WEB PAGE

**TEAM W-INNER CITY:  
S & M PLOW CORP.**

**Commerical Snowplowing, Ice Control & Landscaping**



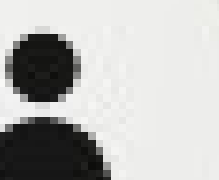
# CATEGORY: BEST WEB PAGE



## ABOUT US

S & M Plow Corp. was founded in 1998 by Sam Gye, a retired foundry worker and master molder who created the bronze statue of Harry Caray and bronze inlaid plaques for DePaul University. Always mechanically inclined, even in childhood, Sam Gye bought his first snowplow on a whim, intrigued only by the mechanics of the machinery. He had no purpose for using it, at the time.

As fate would have it, that winter Chicago was hit with one of the worst snowstorms in its history and Sam Gye with his snowplow was the man to call for help. Things got so busy Mr. Gye hired a neighbor to assist him, and his wife Joyce who started to organize a company around the man and his machine. The next winter she distributed flyers and it became official, a company was born to help fill the void for snow removal services on Chicago's South Side.





# CATEGORY: BEST WEB PAGE

## OUR SERVICES



### Snow Removal

Once the snow hits, there's no need to waste time calling around. S & M Plow stands ready for typical seasonal snowfalls and even the most severe blizzard conditions.

[LEARN MORE →](#)



### Landscaping

Landscape and lawn maintenance are year round services for S & M Plow. When all the snow has fallen, it's usually just in time for spring cleanup and the first...

[LEARN MORE →](#)



### Site Furnishings

This includes selling benches, trash receptacles, art fixtures and picnic tables for public and private outdoor spaces.

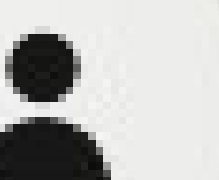
[LEARN MORE →](#)

## WHO WE ARE

S & M Plow Corp. is a licensed general business with the City of Chicago. The company is African-American owned and a certified Disadvantaged Business Enterprise (DBE) with the Illinois Department of Transportation and a certified Minority Business Enterprise (MBE) and Women's Business Enterprise (WBE) with the City of Chicago, Illinois Central Management Services, Illinois State Toll Highway Authority, and Metropolitan Water Reclamation District of Greater Chicago.

We are members of Chatham Business Association, Joseph Business School, Chicagoland Chamber of Commerce, and a graduate of Goldman Sachs 10,000 Small Businesses as well as the Small Business Association's Emerging Leaders Program.

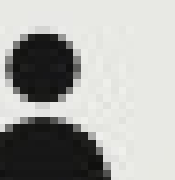
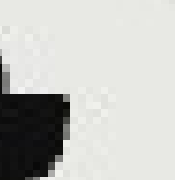
S & M Plow Corp. is rated A+ by the Better Business Bureau, consistently since 2009



**CATEGORY: BEST WEB PAGE**

**TEAM TECHNICAL RESISTANCE:  
MARTINEZ FROGS INC.**

**Sewer & Water, Drainage, Landscaping, Earthwork  
& Concrete**





# CATEGORY: BEST WEB PAGE



Civil +  
Industrial  
Construction

650 Andy Drive  
Melrose Park, IL 60160

(708) 259-9955

projects@martinezfrogs.com



## ABOUT

The firm's humble beginnings started with the company owner Ricardo Martinez, and one dump truck.

After over twenty years of hard work and perseverance, the Martinez Frogs team has collective expertise that spans proficiency in Civil and Vertical, Prime Contracting, Subcontracting, and Trucking, specializing in excavation, drainage, watermain, demolition, landscaping and concrete work.

Ricardo's ever evolving entrepreneurial spirit and hard work ethic, attributes to the company's continued success and diversification. He employs and empowers a team that is dedicated to his vision and always ready to learn and grow.

The team is currently engaged in meaningful capacity building endeavors such as the Illinois Tollway's P4G Partnering for Growth Mentor Protege Program as well as the Agency's Technical Assistance Program.

The firm was recognized for their contribution to the industry as the 2024 recipient of the Illinois Road and Transportation Builder's Association's "Small Business Contractor of the Year Award" for their work as a Prime Contractor on the Tollway System.

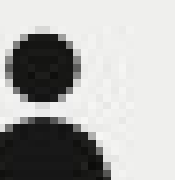
Martinez Frogs has successfully bid and built projects as a Prime and a Subcontractor for the Illinois State Toll Highway Authority, Illinois Department of Transportation, Cook County, Metra, City of Chicago, Metropolitan Water Reclamation District, and various municipalities and private organizations.

With a strong mind, calculated growth, a knowledgeable staff and valuable experience, Ricardo and the Martinez Frogs team are capable and ready to build projects skillfully, proudly, and on time and budget.

Martinez Frogs is a testament to the power of vision and perseverance in the construction industry, showcasing the impact of Hispanic entrepreneurship.



**Ricardo Martinez**  
President





# CATEGORY: BEST WEB PAGE




## SERVICES



CONCRETE + FLATWORK



DEMOLITION + EXCAVATION + LANDSCAPING



SEWER + WATER + DRAINAGE + LANDSCAPING

## We take pride in our partnerships

Martinez Frogs, Inc. is proud to share its partners in building and infrastructure.

### Prime Contracting Experience

- **Forest Preserve of Cook County**
  - 21-80-22C\_Beaubien Woods Boat Launch
  - 21-80-11 Swallow Clif Stairs Rehabilitation
  - 19-80-27C Busse Lake Accessible Canoe Launch improvement
- **Illinois State Toll Highway Authority**
  - I-19-4716 -Elgin O'Hare Western Access Tollway Building Demolition
  - I-22-4882- Local Road Pavement Repairs
  - I-21-4745 - Concrete Pipe Management
  - RR-23-4921 M-4 Storage Building Removal

### Subcontracting Clients

- Metropolitan Water Reclamation District (MWRD)
- Illinois Department of Transportation (IDOT)
- Chicago Transit Authority (CTA)
- McDonagh Demolition
- Lima Contrac

## CLIENTS + CAPACITY



INDUSTRIAL



GOVERNMENT + MUNICIPAL



INFRASTRUCTURE



JOB ORDER CONTRACTING





# CATEGORY: BEST WEB PAGE LAYOUT

## VOTE NOW!



**W-Inner City:  
S & M Plow Corp.**

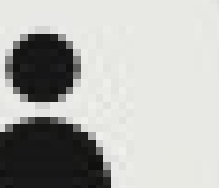
**Technical Resistance:  
Martinez Frogs Inc.**

---

0 W-Inner City

---

0 Technical Resistance





1st Annual

# ILLINOIS TOLLWAY

PAVING THE ROAD TO SUCCESS INVITATIONAL

# CONGRATULATIONS

# CHAMPIONS

