

Unlock New Opportunities:

**Get Certified as a
Disadvantaged Business Enterprise Firm
With Pace Suburban Bus**



BUILDING FOR SUCCESS

HOUSEKEEPING RULES



Housekeeping Rules



WELCOME & INTRODUCTIONS

Get Certified as a Disadvantaged Business Enterprise Firm With Pace Suburban Bus

Acting DBE Program Administrator

Carrie Horner

Pace Suburban Bus



Unlock New Opportunities: Get Certified as a Disadvantaged Business Enterprise (DBE) Firm

Presented by Carrie Horner, Acting DBE
Program Administrator, Pace Suburban Bus

What is the DBE Program?

The DBE program is a federally mandated program governed by the U.S. Department of Transportation (USDOT) under 49 CFR part 26. DBE program is intended to ensure nondiscrimination in the award and administration of DOT-assisted contracts for highway, mass transit and airport financial assistance programs.

DBE Overview

Illinois Unified Certification Program (IL UCP), 49 CFR part 26.81

- IL UCP provides a “one stop shopping” to applicants for DBE certification in the state of Illinois. The IL UCP is based on the concept of certification reciprocity among the agencies with a DBE program.
- IL UCP partners:
 - Pace
 - Metra
 - Chicago Transit Authority (CTA)
 - City of Chicago
 - Illinois Department of Transportation (IDOT)

DBE Eligibility Requirements

An independent, for-profit small business that is at least 51% owned and controlled by one or more individuals who are socially and economically disadvantaged.



Socially disadvantaged.

Women, Black Americans, Hispanic Americans, Native Americans, Asian Pacific Americans, Subcontinent Asian Americans, or other minorities found to be disadvantaged by the Small Business Administration (SBA).



Economic disadvantaged.

Personal net worth does not exceed \$2.047 million.

DBE Eligibility Requirements – cont.



Control.

The socially and economically disadvantaged majority owner(s) must control the management and daily operations of the business.



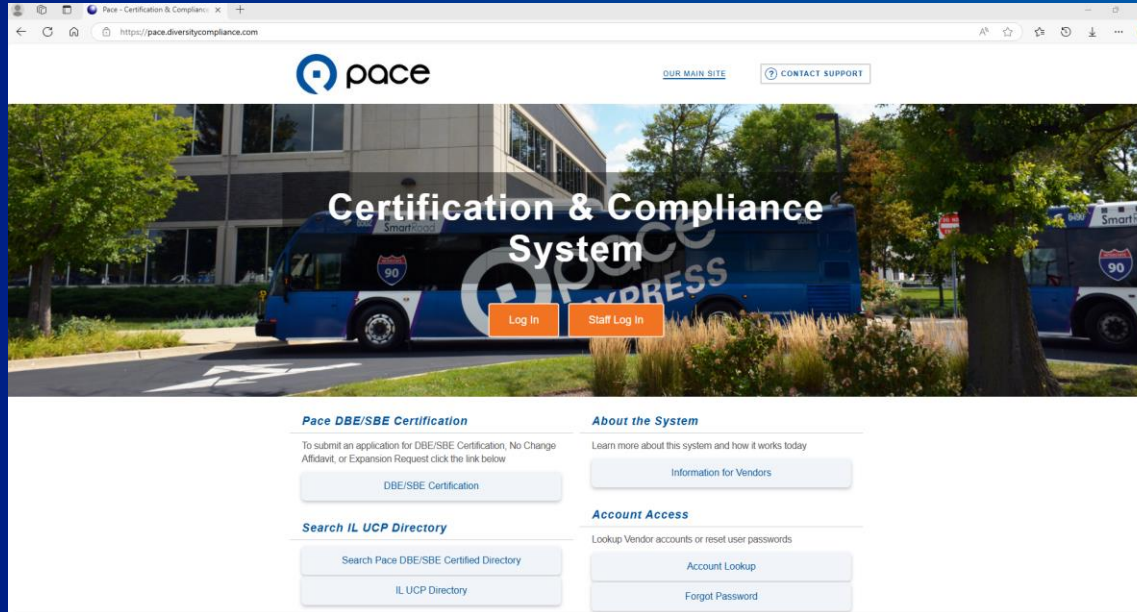
Business size.

The company must meet the following size requirements:

- DOT statutory cap: Company average annual gross receipts in the previous three (3) years must not exceed \$31.84 million.
- SBA size measure: Company average annual gross receipts in the previous five (5) years must not exceed the SBA size standard appropriate for the type of work the company performs.
 - The SBA size standard is based on NAICS (North American Industry Classification System) codes.

Certification Process

1. Application & Documentation.



<https://pace.diversitycompliance.com>



Pace's DBE
Program



Certification/
Compliance

All required documents to be submitted are included within the application.

Certification Process – cont.

2. Review Application.

Certification application is received, the application and supporting documents are analyzed.

Certification review process is 90 days from receipt of a complete application.

3. On-site Interview.

Conduct a site visit.

4. Decision & Notification.

Applicant will receive written notice of the decision. If DBE certification is approved, your company's name and contact information will be included with the IL UCP directory.

Post-Certification Requirements

Maintaining your DBE status.

- Each year on the anniversary of the date of your DBE certification you are required to submit an annual Declaration of Eligibility, support of gross receipts (i.e., company's tax return), and any other required documents.
- Reminder notifications will be sent to you 60-days and 30-days prior to the anniversary date.

Pace Suburban Bus

Department Contact Information
DBE/SBE Programs

Email: DBEinfo@pacebus.com

Phone: (847) 228-4257





QUESTION & ANSWER SESSION

DIVERSITY AND STRATEGIC DEVELOPMENT

Programs

- Business assistance
- Mentoring and training
- Construction industry training and hiring opportunities

Initiatives

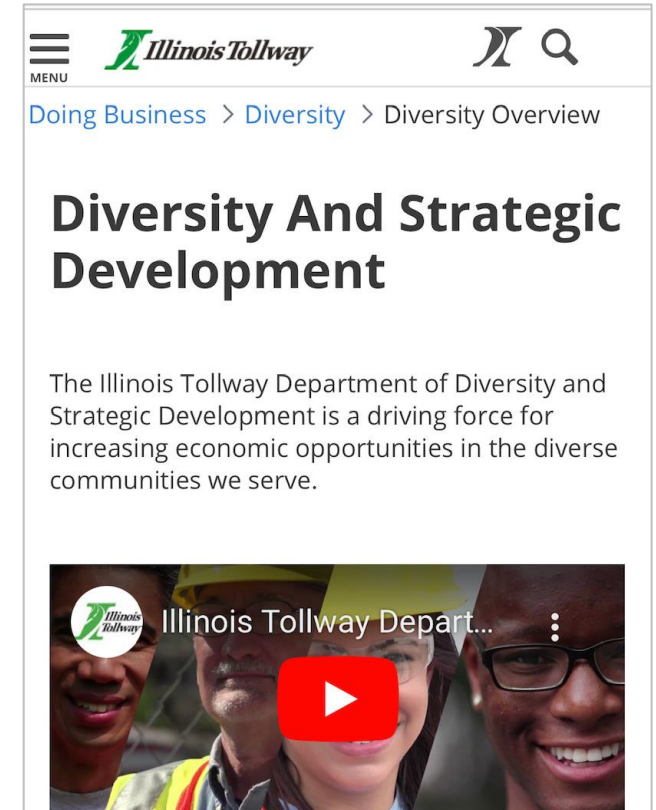
- Virtual outreach sessions
- Training webinars
- Contracting opportunity emails

Register for Tollway Diversity alerts!

- lperez@getipass.com

Visit www.illinoistollway.com to get started

- [Doing Business](#) / [Diversity](#) / [Diversity Webinar Series](#)





@ILTollwa



@ILTollway



@Illinois Tollway



@ILTollway



@ILTollway

SOCIAL MEDIA



THANK YOU

