

# BRIDGING THE FUTURE

## Bridging the Future Capital Plan

Bridging the Future is a \$2 billion, seven-year capital plan. Approved by the Illinois Tollway Board of Directors in December 2024, the plan provides for design and construction services that complement infrastructure investments already underway. The program will serve as a bridge between the current *Move Illinois* Capital Program and the needs of the agency's next major capital program.

Bridging the Future establishes a path forward for 2025-2031, allowing the Tollway to continue modernization of its infrastructure and address maintenance needs across the Tollway system. In addition, the new plan lays a foundation for advance work to support the next capital program and provide consistent delivery of infrastructure investment in the region.

## Funding

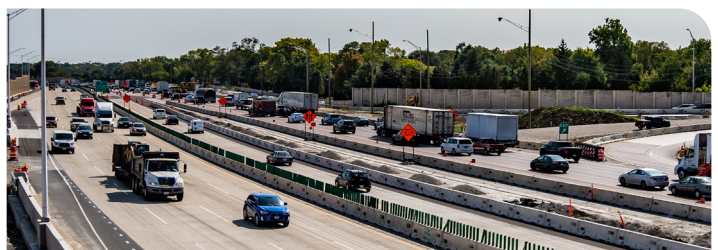
Bridging the Future is funded by toll revenue. There are no expected changes to the Tollway's current tolling structure or additional debt financing.

## Bridging the Future is organized into four key themes:

- ▶ **Connecting Infrastructure**  
*Improving system access and interconnectivity*
- ▶ **Improving Mobility**  
*Expanding capacity and reducing congestion*
- ▶ **Modernizing the System**  
*Strengthening infrastructure and upgrading facilities*
- ▶ **Preparing for Tomorrow**  
*Exploring and implementing new technologies*



**CONNECTING INFRASTRUCTURE**



**IMPROVING MOBILITY**



**MODERNIZING THE SYSTEM**



**PREPARING FOR TOMORROW**

## Bridging the Future Projects

Project	Type of Work			
	Design	Construction	Construction Management	Other
<b>CONNECTING INFRASTRUCTURE</b>				
I-355/I-88 Interchange Improvements (includes master planning)	●			
IL 390/County Farm Road Interchange (Access Expansion)	●	●	●	
I-88/York Road/22nd Street Interchange (Access Expansion)	●	●	●	
Lake Cook Road Bridge over I-94		●	●	
Union Pacific Railroad Bridge over I-90		●	●	
<b>IMPROVING MOBILITY</b>				
I-355 Widening - North Avenue to Roosevelt Road	●			
NB I-94 Widening – Deerfield Road to IL 22	●			
I-94 Crossroad Bridge Reconstruction	●			
I-294 - Railroad Bridges (IL 394 to 95th Street)	●			
I-294 - Chicago, State, Lincoln (IL 394 to 95th Street)	●	●	●	
I-294 - Mainline Structures (IL 394 to 95th Street)	●	●	●	
Central Tri-State Tollway (I-294) Projects		●	●	
EJ&E Railroad Bridge over I-88	●			
WB I-88 Widening – IL 83 to Highland Avenue	●			
I-88 Widening – IL 47 to IL 56	●			
<b>MODERNIZING THE SYSTEM</b>				
Additional Bridge/Pavement Repairs	●	●	●	
Bridge Repairs		●	●	
I-355 Des Plaines River Bridge Bearing Replacement		●	●	
I-90 Resurfacing	●	●	●	
Facilities Repairs	●	●	●	
Toll Plaza Improvements	●	●	●	
<b>PREPARING FOR TOMORROW</b>				
Program Management				●
Capital Program Support	●		●	●
Back-Office				●
Active Traffic Management Expansion	●			
Fiber Upgrades	●			
Emerging Technologies	●			
Planning and Feasibility Studies	●			