

OPEN ROAD TOLLING  PLUM GROVE RD PLAZA 326



# INNOVATIVE DELIVERY *Networking Event*

Illinois Tollway  
July 8, 2025





# AGENDA

- **Bridging the Future Capital Program**
- **Alternative Delivery**
- **Compliance/Diversity Overview**
- **Technical assistance and networking**

# CAPITAL PROGRAMS UPDATE

## Timeline



***MOVE ILLINOIS***  
2012-2027

**BRIDGING THE FUTURE**  
2025-2031



# BRIDGING >>> THE FUTURE

## \$2 billion capital plan

- ▶ Design – 16 percent
- ▶ Construction – 58 percent
- ▶ Construction Management – 13 percent
- ▶ Other – 13 percent

### Four Key Themes

#### Modernizing the System

\$532 million

#### Preparing for Tomorrow

\$485 million

#### Improving Mobility

\$725 million

#### Connecting Infrastructure

\$258 million

# INNOVATIVE DELIVERY

**Design-Build**

**Construction Manager/  
General Contractor**

**Progressive  
Design-Build**



# INNOVATIVE DELIVERY IN ILLINOIS

Authorizes IDOT and Illinois Tollway to use following project delivery methods:

- Design-Build
- Progressive Design-Build
- Construction Manager/General Contractor (CM/GC)



*Innovations for  
Transportation  
Infrastructure Act  
(630 ILCS 10) signed  
into law June 15, 2022*

## Highlights

- ✓ Up to 20% of annual improvement budget
- ✓ Set requirements for procurements and procedures
- ✓ DBE and VOSB requirements set by agency
- ✓ Proposals must include description of utilization and workforce diversity plans

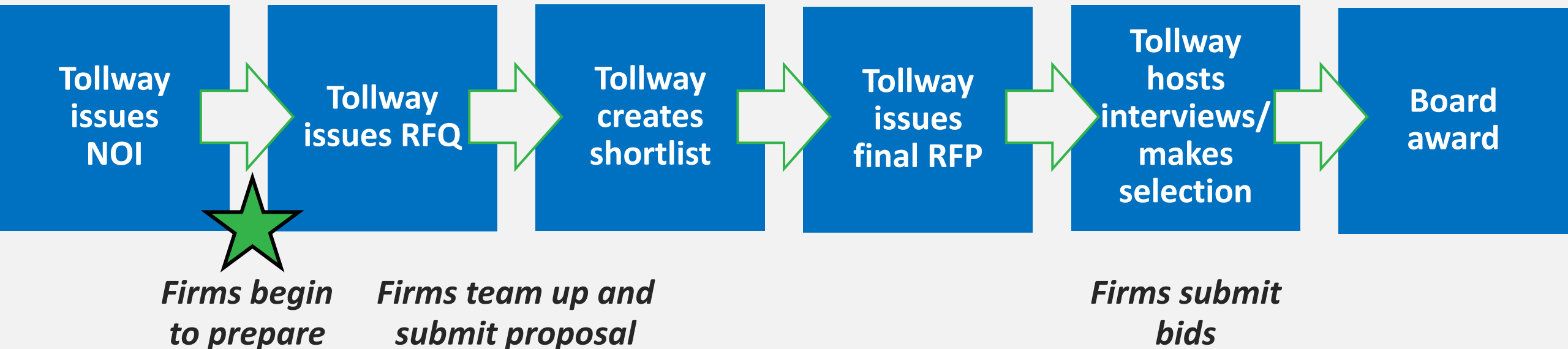
“ It is the intent of this Act to use design professionals, construction companies, and workers from this State, **reflecting the diversity of the State's businesses and workforce, to the greatest extent possible**”

# DESIGN-BUILD PILOT PROJECT

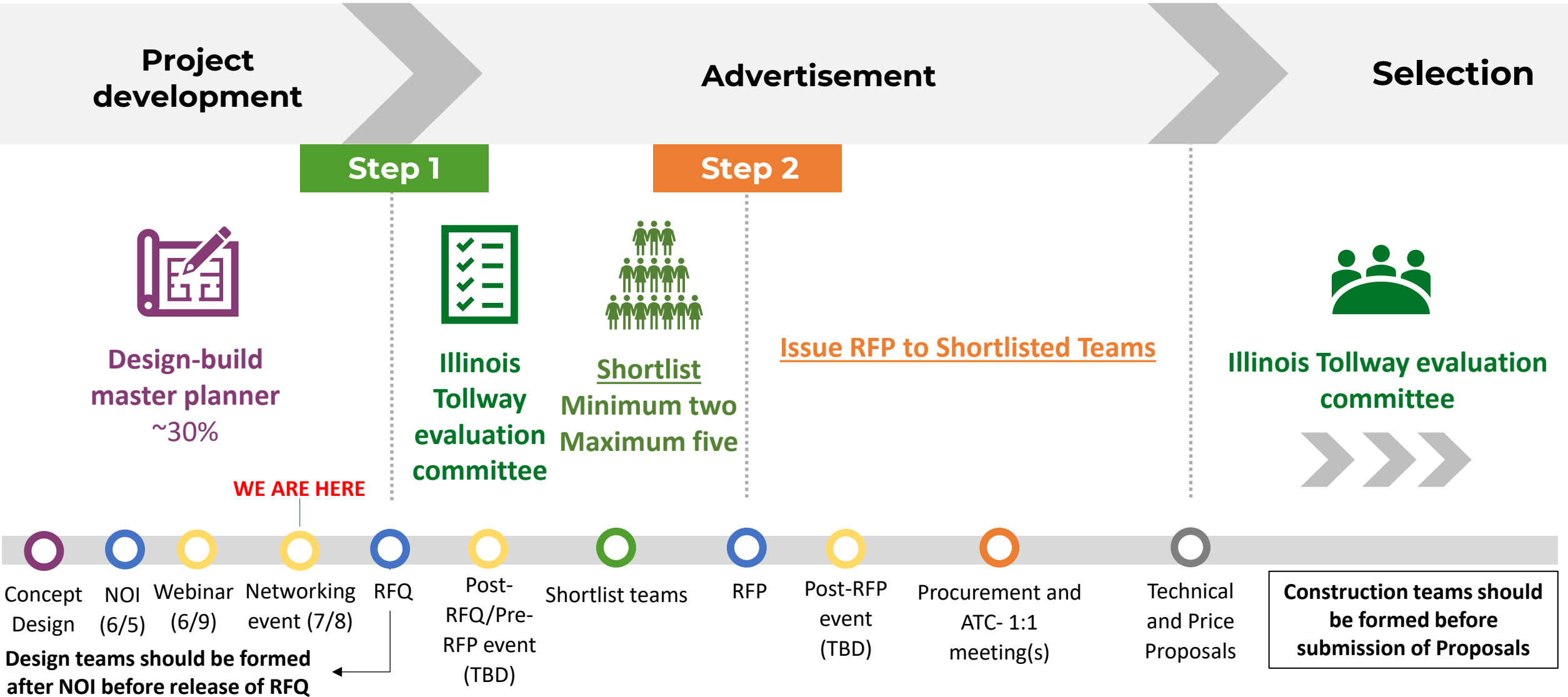
## PILOT PROJECT

- Notice of Intent to be issued for minimum of 28 days prior to publishing Request for Qualifications
- Construction anticipated in 2026

### Process



# DESIGN-BUILD PROCUREMENT AND PILOT MILESTONES







# COMPLIANCE PROCESSES

# COMPLIANCE

## *Utilization and performance plans*

### **Utilization Plan (multiple submissions)**

- Design-build contract scopes and opportunities
- Timing for full detailed goal commitment = Delayed **NOT** Waived

### **DBE/VOSB Performance Plan**

- Outreach strategy for inclusion (narrative)
- Achievement strategy to utilization (numbers)

**After more defined scopes developed throughout design-build contract, additional DBE/VOSB participation identified and then detailed DBE/VOSB participation reported**

# COMPLIANCE

## *Good-faith efforts*

### Key change from traditional projects

- Good-faith efforts happen post-award, **not** pre-award
  - **No option for waiver at submission**
  - For design-build projects, good-faith efforts means **efforts made to meet DBE commitment to meet goals**
  - Good-faith efforts **form/documentation submitted quarterly** to capture and report efforts (revised form 2023DB documenting activities and efforts encouraging DBE participation and inclusion towards meeting goals [post award])



# DBE/VOSB COMMITMENT GOAL

Design-build...Two scopes...Two goals

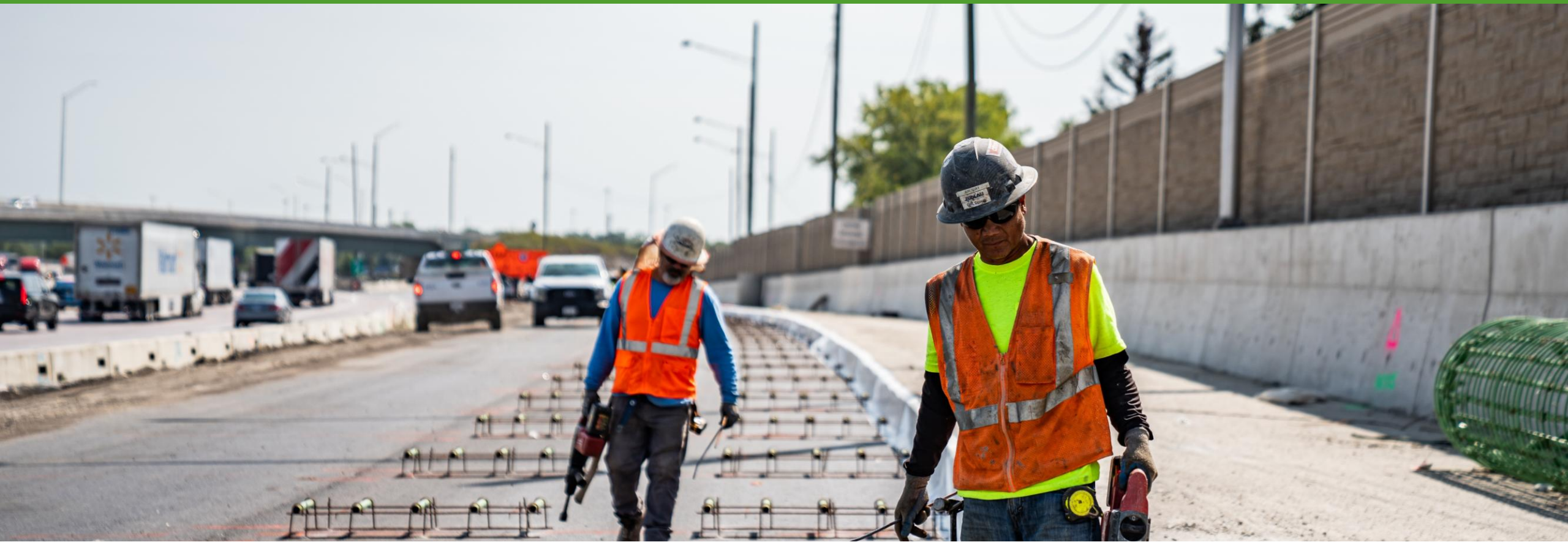
## Professional Services/Design goal

- DBE goal
- VOSB goal

## Construction and Construction-related Services goal

- DBE goal
- VOSB goal

**Why: Ensure participation from both professional services and construction DBE/VOSB firms on design-build contracts**



# DBE AND VOSB INFORMATION

# DIVERSITY

## *Partnering for Growth (P4G) Program*

### **P4G applicable to either DBE and/or VOSB participation**

- Should identify at least one professional services P4G protégé at time of proposal submission
- Strongly encouraged to commit to utilizing at least one construction P4G protégé at time of proposal submission
  - Includes small business for construction
  - Identify P4G construction mentee within 30 days of construction work
- Participation in Partnering for Growth (P4G) Program will be evaluation factor and strongly recommended

### **Why**

- Ensure participation from both professional services and construction DBE firms on design-build contracts and foster growth and business capacity of small businesses





# TECHNICAL ASSISTANCE

# DESIGN-BUILD RESOURCES AND NETWORKING



**Design-Build Networking Event  
Presentation**



**Contract RR-23-4920R  
Design-Build Notice of Intent**



THANK YOU