



I-90 Corridor Planning Council

Meeting 5

November 14, 2011



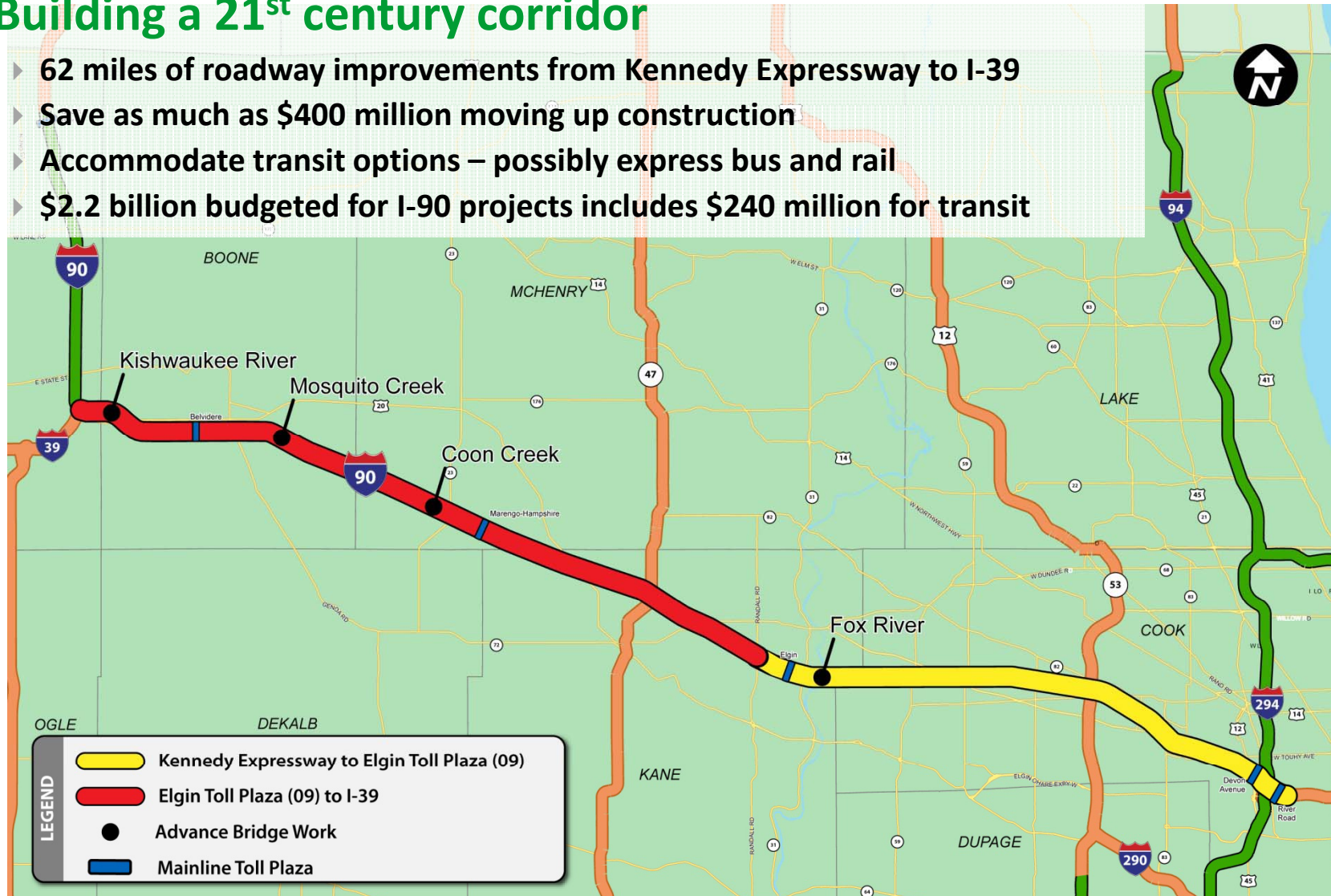
Move Illinois Program Overview

Move Illinois will improve mobility, relieve congestion, reduce pollution and link economies across Northern Illinois

- ▶ **\$12 billion, 15-year program**
 - ▶ \$8.32 billion to maintain existing system
 - ▶ \$3.83 billion for new projects to improve mobility
- ▶ **Key goals and benefits**
 - ▶ Save drivers time and money
 - ▶ Drive the economic engine
 - ▶ Build a 21st century transportation system
 - ▶ Job #1 – Take care of the existing system
 - ▶ Be the “cleanest and greenest” program in history

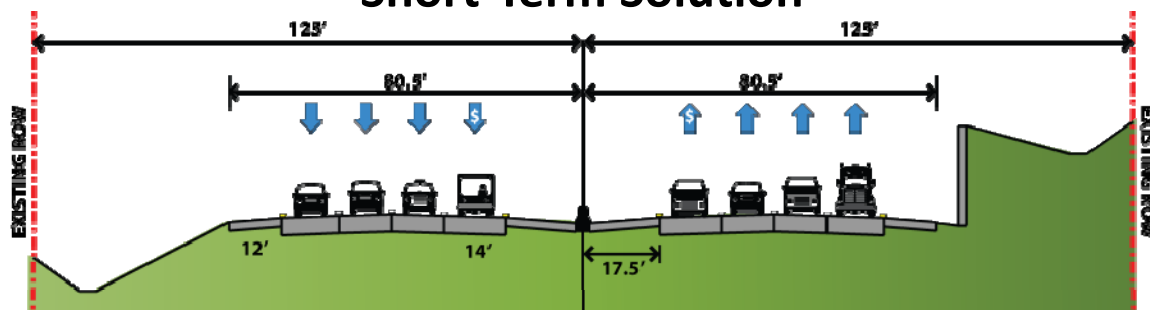
Building a 21st century corridor

- # Building a 21st century corridor
- ▶ 62 miles of roadway improvements from Kennedy Expressway to I-39
 - ▶ Save as much as \$400 million moving up construction
 - ▶ Accommodate transit options – possibly express bus and rail
 - ▶ \$2.2 billion budgeted for I-90 projects includes \$240 million for transit
-
- The map shows the project corridor starting from the Kennedy Expressway (I-90) in the north, passing through Boone, McHenry, Lake, Cook, Kane, Ogle, and DeKalb counties, and ending near I-39. The corridor is highlighted in red and yellow. Key locations marked include Kishwaukee River, Mosquito Creek, Coon Creek, Fox River, and Elgin. The map also shows major highways like I-90, I-39, I-94, I-290, and I-294, as well as various state and local roads. A legend in the bottom left corner explains the color coding and symbols used on the map.
- LEGEND**
- Kennedy Expressway to Elgin Toll Plaza (09)
 - Elgin Toll Plaza (09) to I-39
 - Advance Bridge Work
 - Mainline Toll Plaza

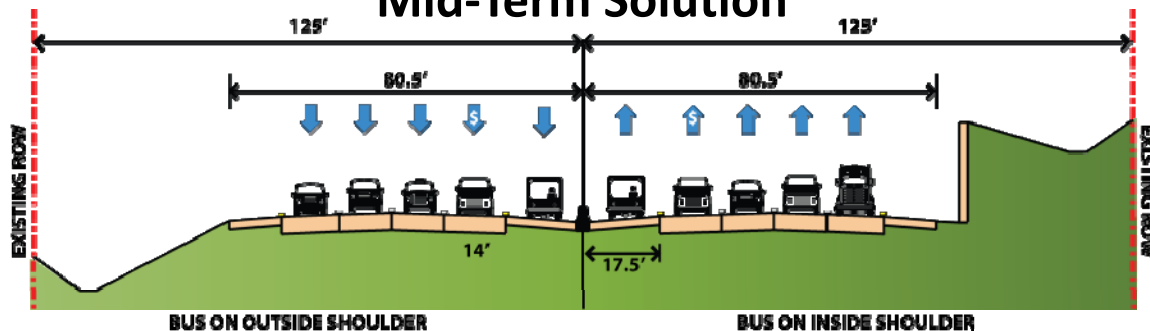


Jane Addams Memorial Tollway (I-90)

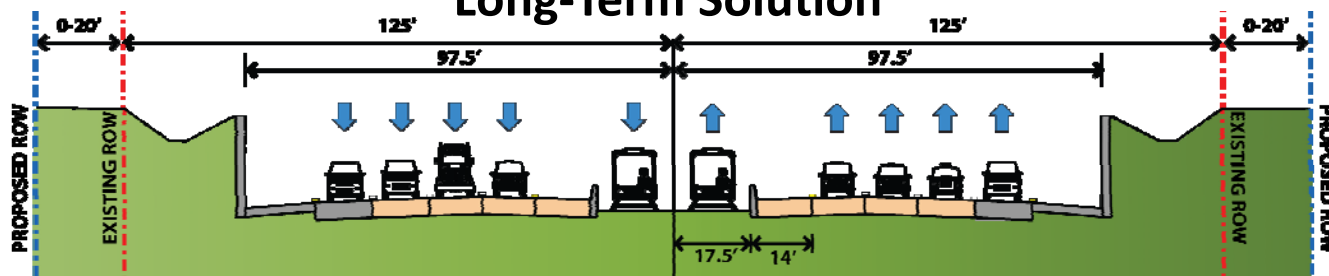
Short-Term Solution



Mid-Term Solution



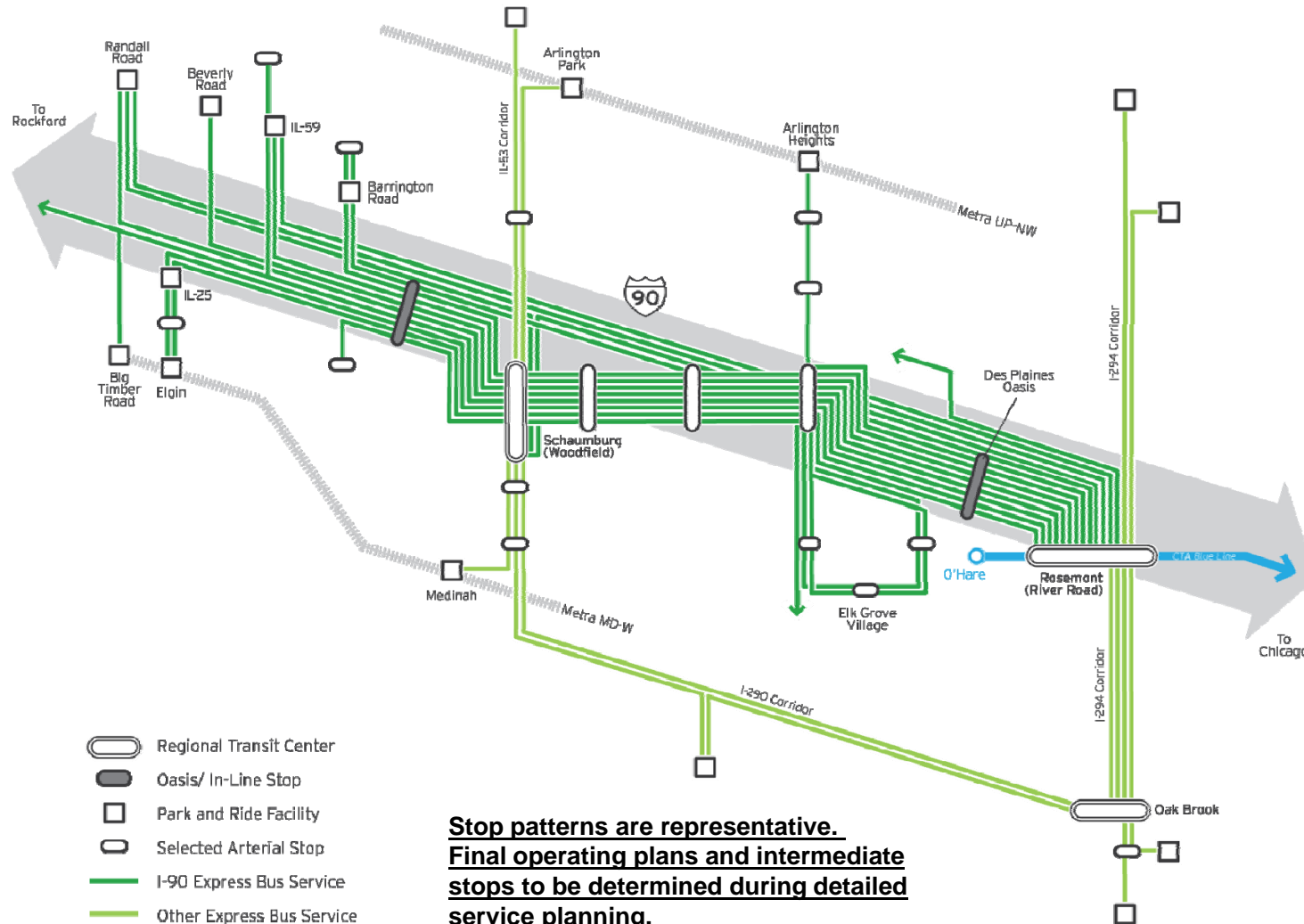
Long-Term Solution



Recommendations

-

Transit Service Concept



Federal Highway Administration Grant

Tollway will use \$528,840 FHWA grant to study how to integrate transit with managed lanes on I-90 Corridor, including Jane Addams Memorial

- ▶ Furthers Tollway efforts to reduce congestion, improve air quality and provide new choices for drivers
- ▶ Expands Tollway study with RTA
- ▶ Assists I-90 Corridor Planning Council in determining best way to build a state-of-the art corridor

Moving Forward

Commitment to start work in 2012

- ▶ Targeted completion: 2016
- ▶ Issuing Professional Services Bulletins for planning and design contracts
- ▶ Putting construction contracts out to bid
 - ▶ Advance work – temporary shoulder widening, Randall Road to I-39
 - ▶ Advance reconstruction and widening of 4 bridges between I-39 and the Fox River
 - ▶ Ramp pavement reconstruction, U.S. Business 20
 - ▶ Roadway rehabilitation, IL Route 53 to Newburg Road
 - ▶ IL Route 47 Interchange
- ▶ Working with project advisory councils
- ▶ Community outreach
- ▶ Sharing information on the Illinois Tollway's Web site



THANK YOU