

**THE ILLINOIS STATE TOLL HIGHWAY AUTHORITY
MINUTES OF THE
STRATEGIC PLANNING
COMMITTEE MEETING**

June 19, 2013

The Illinois State Toll Highway Authority held the Strategic Planning Committee Meeting on Wednesday, June 19, 2013 at approximately 10:35 a.m. at the Central Administration Building in Downers Grove, Illinois.

Committee Members Present:

Committee Chair Weisner
Director Sweeney
Director Towns

Not Present:

Also present:

Chair Wolff

Committee Chair Weisner called the meeting to order and opened the floor for public comment. No public comment was offered.

CHAIR – STRATEGIC PLANNING

Committee Chair Weisner then called for a motion to approve the minutes of the Strategic Planning Committee Meeting held on February 20, 2013. Director Sweeney made the motion to approve the minutes; seconded by Director Towns. The motion passed unanimously.

EXECUTIVE DIRECTOR

Chief of Staff Michael Stone introduced Rocco Zuccherro, Deputy Chief of Engineering for Planning, to provide the Strategic Planning Work Plan and Council Outreach Updates as shown in the attached presentation.

Highlights of the presentation included Work Plan Status, Corridor Council Update and Interchange Update.

Chair Wolff asked if the surveys that were part of the Work Plan were designed to drive more customers to the Tollway system. Rocco replied there were several questions including why a customer would prefer the tolled route. Discussion ensued on the information being gathered from the surveys and its possible uses.

Committee Chair Weisner asked what percentages of roadway customers are I-PASS users. Mr. Zuccherro responded the Tollway's data shows approximately 86% of Tollway users are I-PASS holders.

Committee Chair Weisner also asked if there was a consultant who developed the Illinois Route 120/53 survey. Mr. Zuccherro responded an experienced consultant developed this unique survey to ensure as much useful information as possible can be obtained.

Chair Wolff asked about the level of support for the Tollway projects from the Corridor Councils. Mr. Zuccherro stated the general mood of the Councils was positive. He provided a summary of the different perspectives of a few of the Corridor Councils on Tollway projects.

Committee Chair Weisner asked if there were policy differences in the treatment of partial and full interchanges. Discussion ensued on types of interchanges, current locations and general process for obtaining an interchange.

Discussion ensued on the Balmoral project and future plans for an extension.

Chair Wolff asked about tolled and untolled movements. Discussion ensued about balance and equity in the planning of different types of pricing and movements.

Director Sweeney asked if the free movements are found primarily in rural areas. Mr. Zucchero concurred. Discussion ensued on the different approaches to interchanges and how to obtain community input.

Director Weisner emphasized local support and input is an important part of the process.

Chair Wolff asked what effect the Elgin O'Hare Western Access (EOWA) project has had on the overall interchange project policy. Discussion ensued on the uniqueness of the EOWA project and how to think about the overall interchange policy going forward.

Discussion followed regarding the cost and benefits of interchanges to the various communities. Mr. Zucchero stated the Corridor Councils and the various outreach meetings are informed of all of the possible options and benefits of the projects.

Chair Wolff asked if there are places where the passenger and commercial vehicle demands are comparable to EOWA where an equitable cost solution was implemented. Mr. Zucchero responded various equitable cost solutions were being explored. Discussion ensued.

Director Weisner requested a case-study on how the interchange request process works under the different approaches to see their cause and effect. Chair Wolff requested this information include the decision principals and variables that must be considered in each decision. Mr. Zucchero agreed to provide the information.

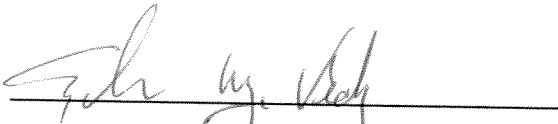
Director Sweeney asked how much is the Illinois Department of Transportation (IDOT) involved in these projects. Mr. Zucchero provided a summary of projects with IDOT involvement.

Discussion ensued on policy development and consideration for flexibility in the policy to address future projects.

There being no further business, Committee Chair Weisner requested a motion to adjourn. Motion to adjourn was made by Director Sweeney; seconded by Director Towns. The motion was approved unanimously.

The meeting was adjourned at approximately 11:40 a.m.

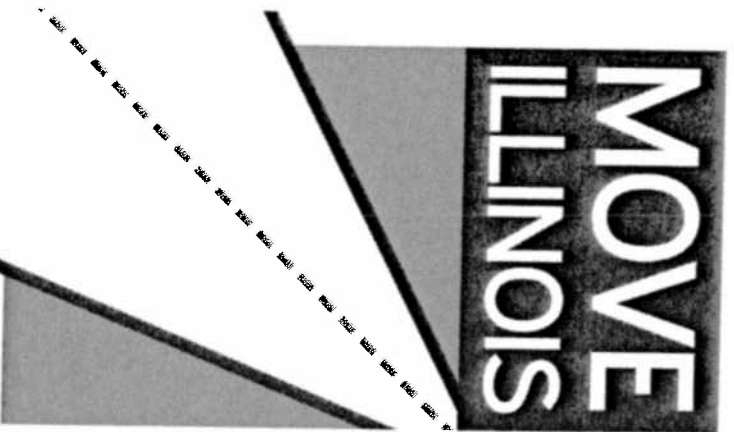
Minutes taken by:



Marlene Vick

Assistant Board Secretary

Illinois State Toll Highway Authority



The Illinois Tollway
DRIVING
THE FUTURE

Interchange and Roadway Cost

Sharing Policy Update

Strategic Planning Committee

June 19, 2013

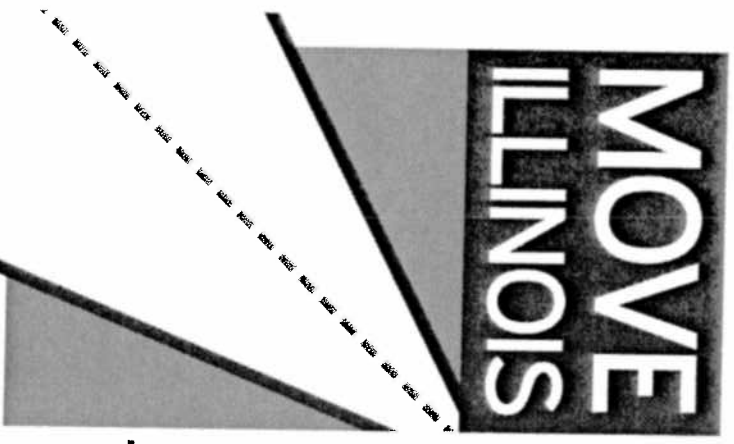
Strategic Planning Committee Overview

- ▶ **Work plan status**
- ▶ **Corridor council updates**
- ▶ **Interchange update**



2013-14 Committee Workplan

Key Decisions	Decision-Making Timeframe		
	1-6 Months	6-12 Months	12 Months +
Customer/user surveys	X		
Freight accommodation planning	X		
Multi-modal planning	X		
Environmental and Sustainability Policy	X		
Other cost-share local policies		X	
Congestion pricing/off-peak incentives		X	
Landscape Permit/Policy		X	
Non-tolled ramp review		X	
Land use and right-of-way evaluation			X
Expanded use of oases			X
Innovative financing options			X
Supplemental revenue generation (land, towers, utilities, etc.)			X



The Illinois Tollway
DRIVING
THE FUTURE

Corridor Council Updates

Council Updates by Corridor



▶ I-90 Corridor

- ▶ Public open house
- ▶ Stakeholder coordination
- ▶ JAWA and local agency meetings
- ▶ Legislative outreach

▶ I-294/I-57 Interchange

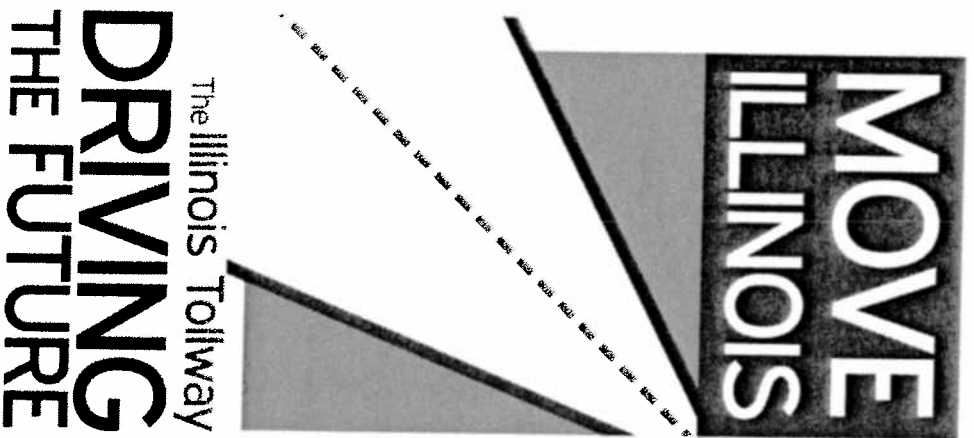
- ▶ Quarterly mayors meeting
- ▶ Property owners meetings
- ▶ Newsletter and brochure
- ▶ Local technical assistance
- ▶ Open house – summer 2013

▶ Elgin O’Hare Western Access

- ▶ Local Advisory Committee (LAC)
- ▶ Open houses – Itasca and Roselle
- ▶ Quarterly mayors meeting
- ▶ Local agency meetings and IGAS
- ▶ Federal funding applications
 - ▶ CMAQ and TIGER

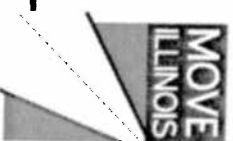
▶ Illinois Route 53/120

- ▶ BRAC meeting in August
- ▶ Coordination with CMAP and Lake County on land use planning



Interchange Update

Today's Purpose



- ▶ **Provide status update**
 - ▶ Interchange and Roadway Cost Sharing Policy background and basics
 - ▶ Location of potential new or expanded interchanges
- ▶ **Gather committee input**
 - ▶ Approach to tolling – balancing the cost of tolling with potential revenue generation

Background and Basics

- ▶ More than 100 interchanges of various types on the Tollway system
 - ▶ Tolloed and untolloed ramps
 - ▶ Cash and I-PASS
 - ▶ All electronic (I-PASS only)
- ▶ **Historical perspective**
 - ▶ Closed tolling system
 - ▶ A toll will be assessed at some point along the trip
 - ▶ Operational changes
 - ▶ Removed or eliminated mainline plazas
 - ▶ Open road tolling
- ▶ Elgin O'Hare Western Access

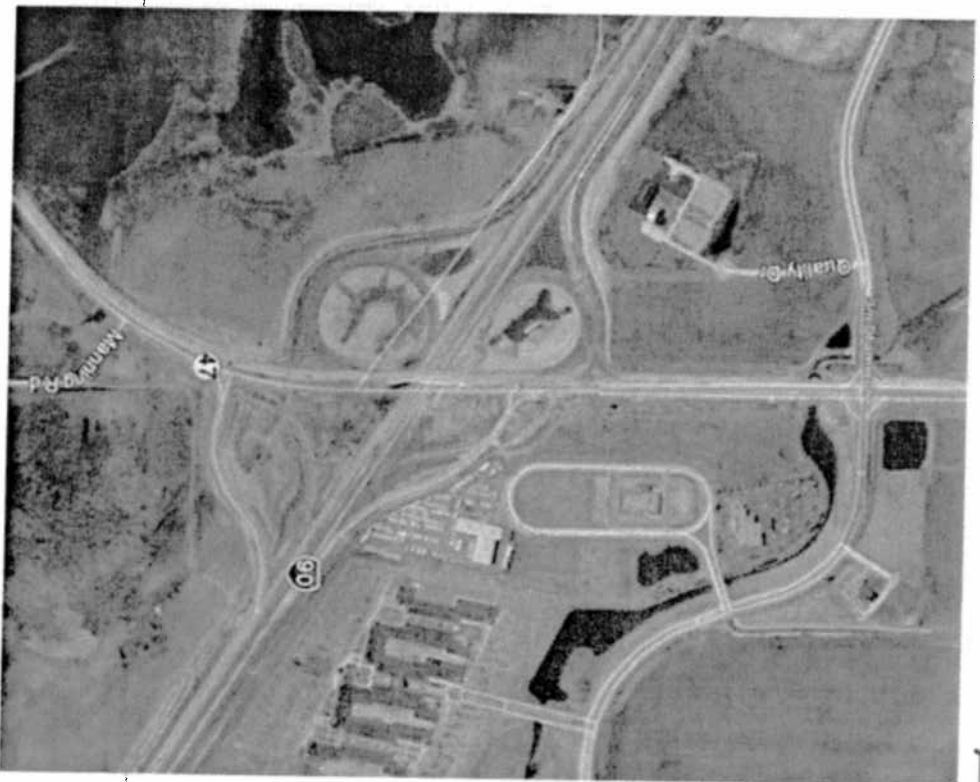
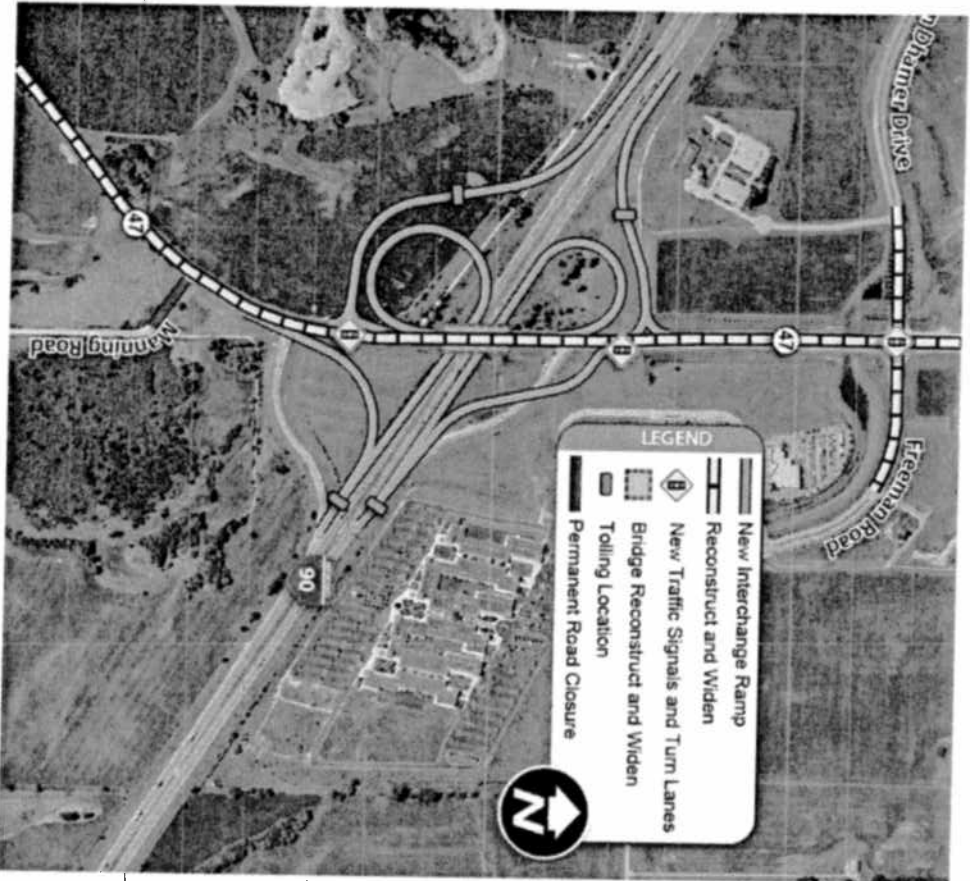
Background and Basics

- ▶ **New Interchange and Roadway Cost Sharing Policy in 2012**
 - ▶ Outlines requirements for local participation on new interchanges/access
 - ▶ Project selection criteria updated
 - ▶ Tollway contribution considerations outlined
- ▶ **Basic steps for new interchange/access**
 - ▶ Memorandum of Understanding (MOU)
 - ▶ Local agency to lead planning/design
 - ▶ Financial plan
- ▶ Intergovernmental Agreement (IGA)

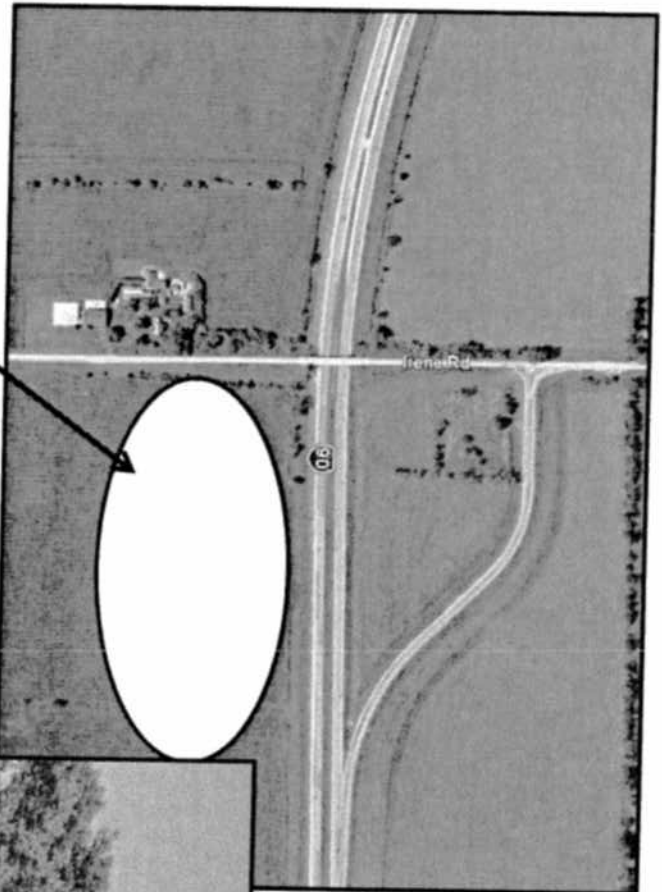
I-90 New/Expanded Interchanges

Location	Type	Request Agency	Status
Lee Street	Expand	Rosemont/Des Plaines/Chicago	Draft MOU
Elmhurst Road/Illinois Route 83	Expand	Des Plaines/Elk Grove Village	Construction (EOWA)
Meacham Road	New	Schaumburg	MOU Approved
Roselle Road	Expand	Schaumburg/Cook County	Draft MOU
Barrington Road	Expand	Hoffman Estates and IDOT	IGA for design TIGER grant application
Illinois Route 47	Expand	Huntley//Kane/McHenry	Construction
Irene Road	Expand	Boone County/ Belvidere	IGA for eastbound on-ramp, MOU for full future access

Witness the Progress!

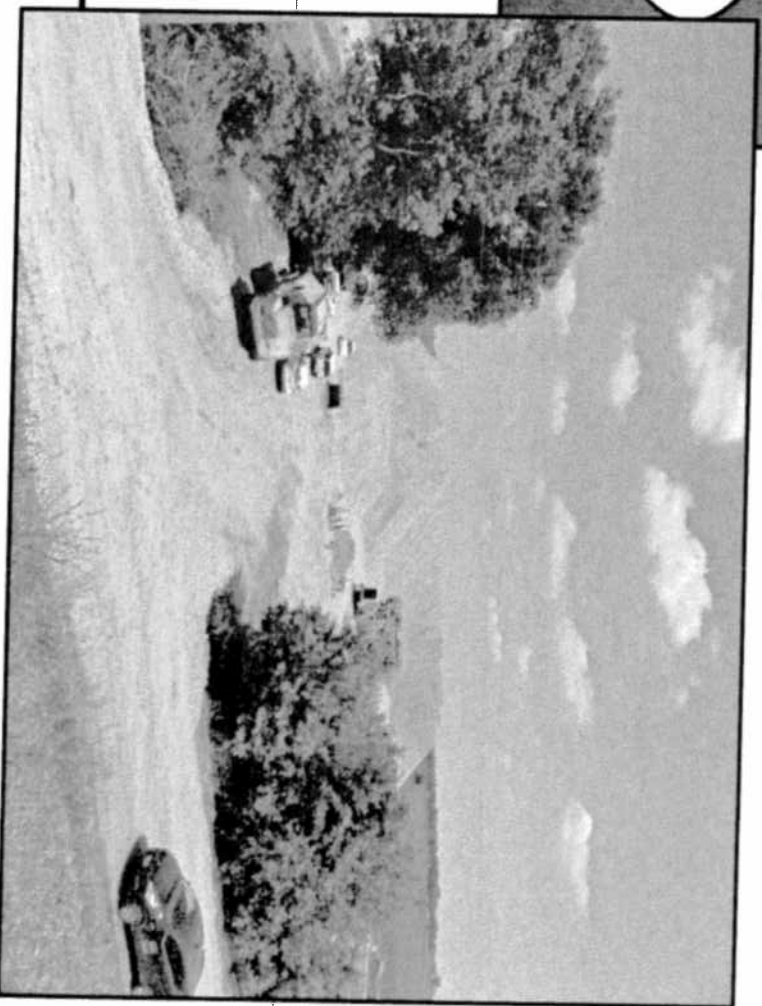


I-90 at Irene Road



County/city right-of-way acquisition

Material storage and construction access

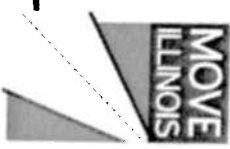




Other Active Interchange Projects

Location	Type	Request Agency	Status
I-88 at Illinois Route 47	Expand	Sugar Grove/Kane County	Draft MOU IDOT Programmed
I-94 at Illinois Route 173	Expand	Antioch/Old Mill Creek/Wadsworth/Lake County	Discussion
I-90 at Illinois Route 23	New	Marengo	Locals advancing planning
I-90 at Irene Road	Expand	Belvidere/Boone County	MOU for full access
I-90 at Perry Creek/ Spring Creek Road	New	Rockford	Draft MOU
I-294 at Illinois Route 64	Expand	Northlake/Elmhurst	EOWA TIGER grant application

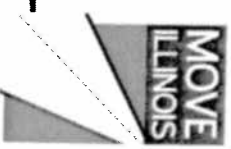
Approach to Tolling and Financing



Interchange and Roadway Cost Sharing Policy update options

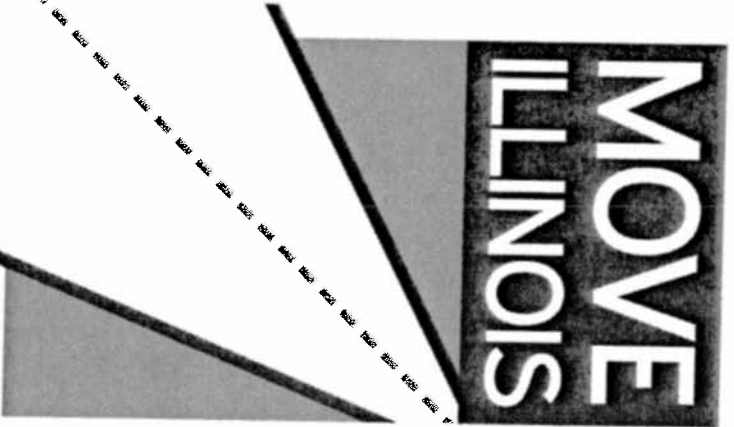
- ▶ **Local Share**
 - ▶ Cash
 - ▶ In-kind contributions
- ▶ **Tollway Share – based on net new revenue**
 - ▶ All-electronic tolling
 - ▶ Toll rates on new ramps
 - ▶ Add tolls to existing (untolled) ramps
 - ▶ Premium tolls
- ▶ **Corridor approach**
 - ▶ Adjust or modify adjacent interchanges

Discussion and Input



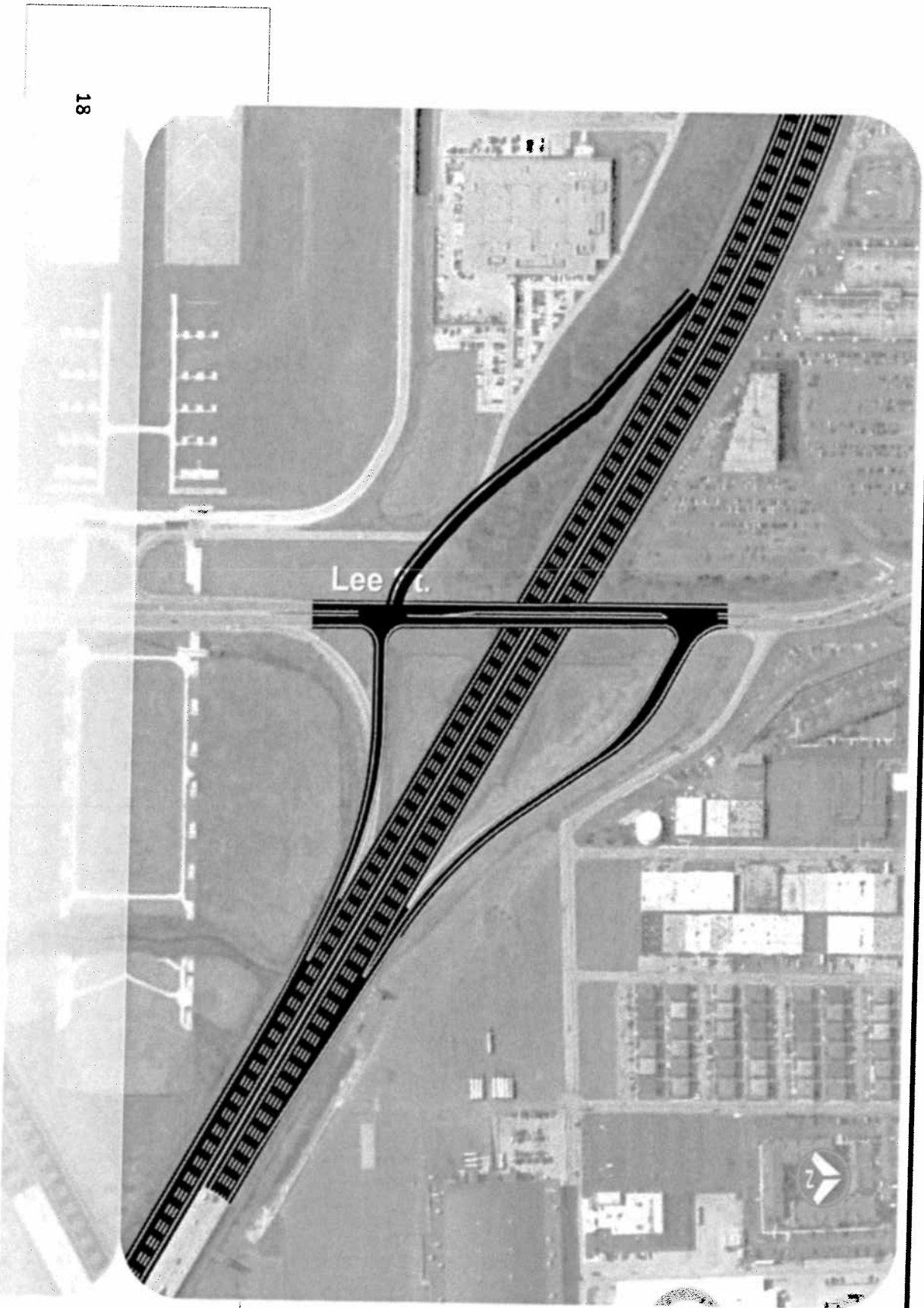
- ▶ **How to apply approach on future projects**
 - ▶ Equity
 - ▶ Balance toll rates
- ▶ **Untolled movements**
 - ▶ Closed system
 - ▶ Driver decision based on toll vs. untolled
- ▶ **Free movements**
 - ▶ Several free movements exist today

The Illinois Tollway
DRIVING
THE FUTURE

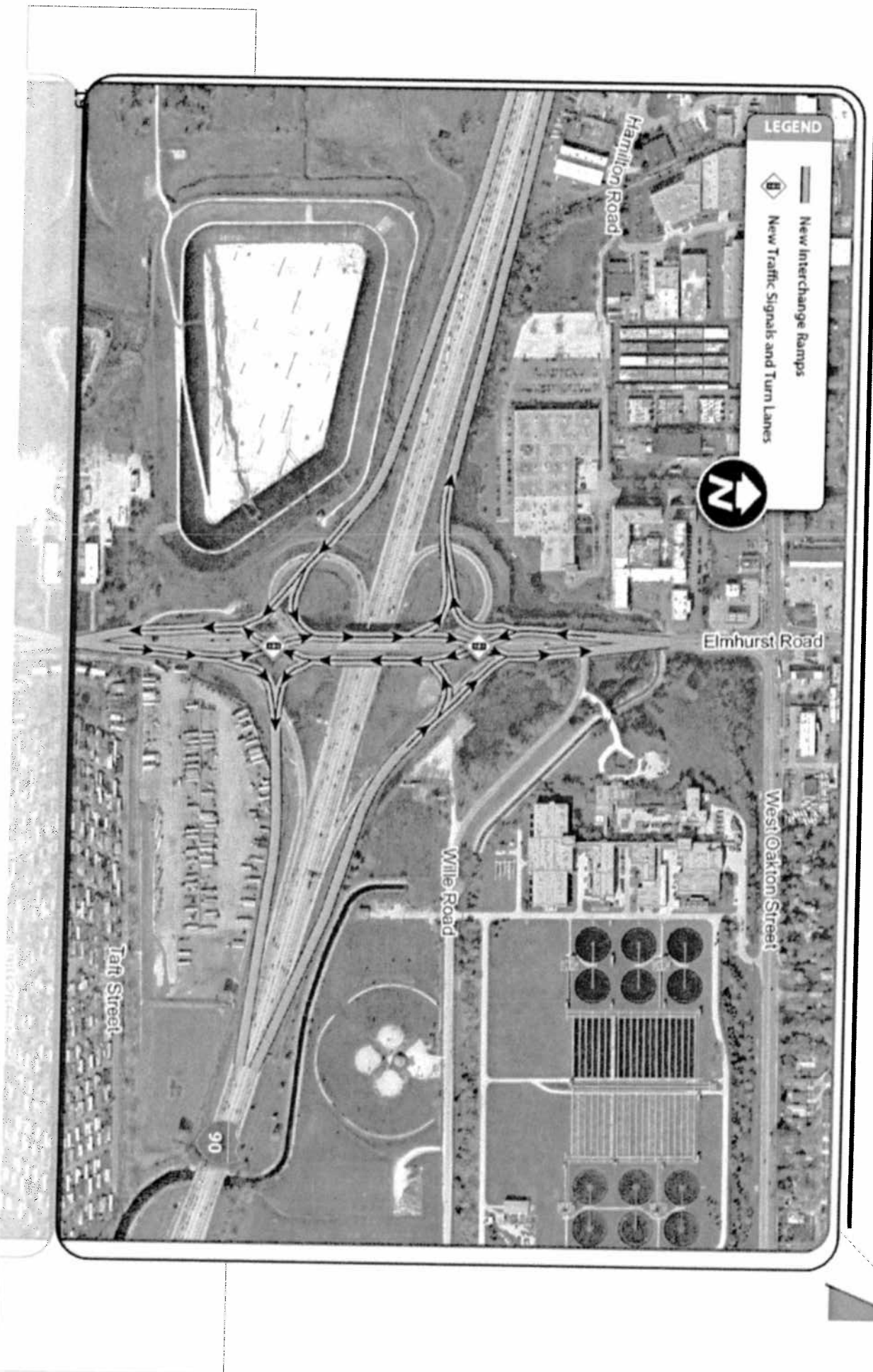


Appendix

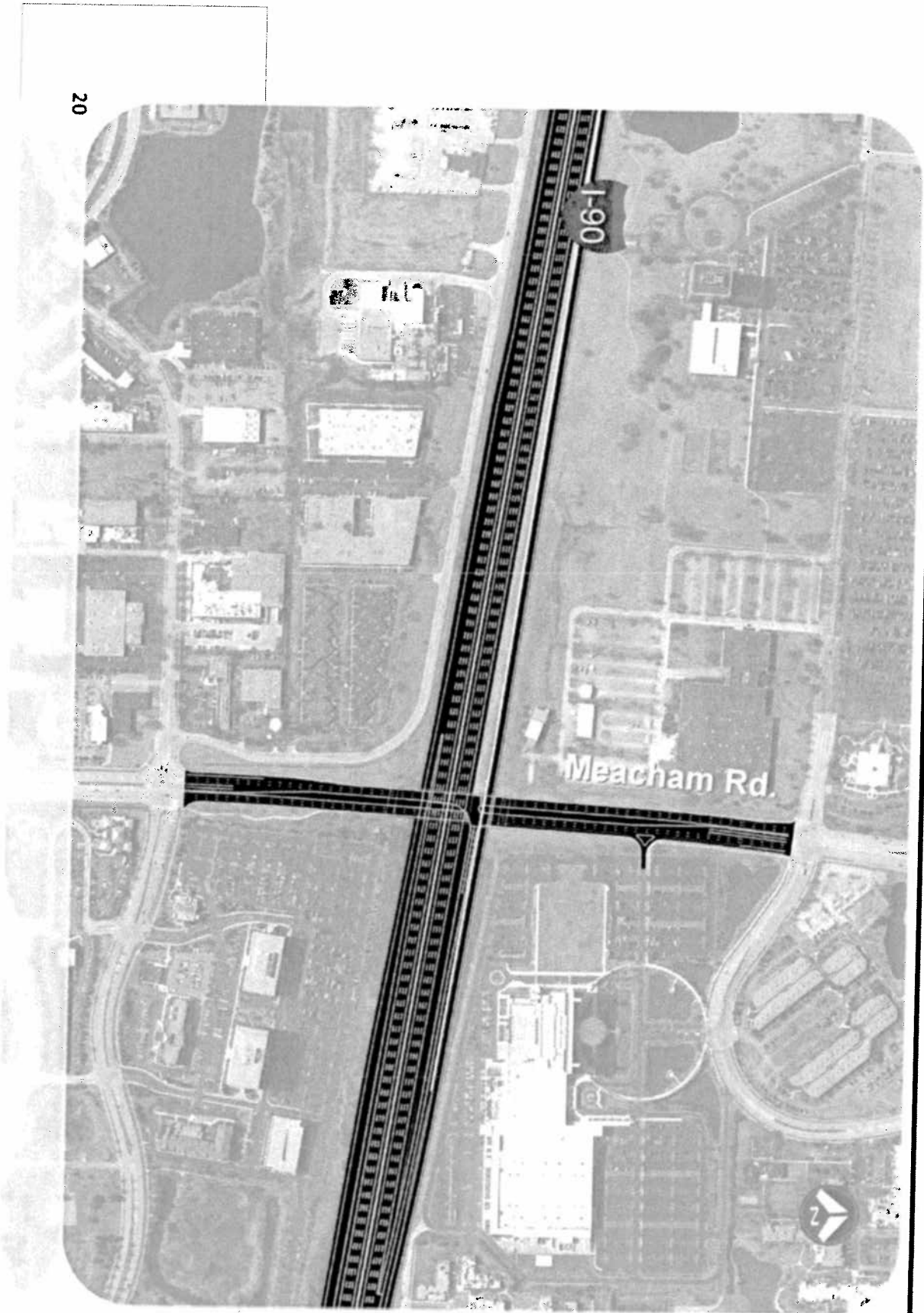
Concept Design: Lee Street



Concept Design: Elmhurst Road



Concept Design: Meacham Road



Concept Design: Roselle Road

