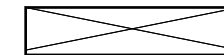


**Illinois Tollway Standard Drawing Revisions**

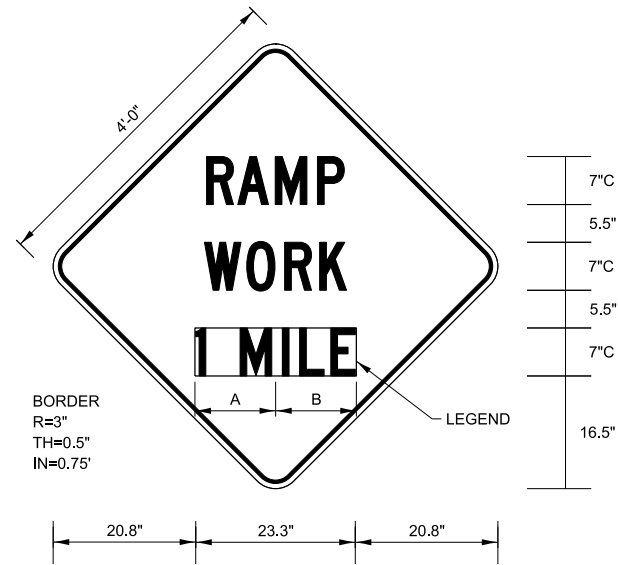
**Illinois Tollway Standard Drawing Revisions**

<b>Section E Maintenance of Traffic</b>		<b>Effective: 03-01-2026</b>
<b>Drawing</b>	<b>Modification Summary</b>	
<b>E1-08</b>	<b>CONSTRUCTION SIGNS</b>	
Sheet 1	Retire signs Supplemental Plate (O) as it is a standard MUTCD sign, TS-4, TS-5a and TS-5b. Removed detail and callout for mounting holes on all signs. Lettering for TS-2 changed from Series D to Series C.	
Sheet 2	Retire signs TS-7 and TS-10. Modified sign size and lettering series for TS-6. Removed detail and callout for mounting holes on all signs.	
<b>E2-13</b>	<b>LANE CLOSURE DETAILS</b>	
Sheet 1	Rotated "Advance Signing " detail from portrait to landscape. Revised from 2-lane to 4-lanes and revised Legend to Truck/Trailer Mounted Attenuator.	
Sheet 2	Rotated "One-Lane Closure with Barrier" and "One-Lane Closure with Barricade" details from portrait to landscape. Revised Legend to Truck/Trailer Mounted Attenuator. Deleted what was previous note 14 and adjusted trailing notes and callouts. Revised callout to "see note 19" and added new note 19.	
Sheet 3	Rotated "Two-Lane Closure with Barricade" and "Three-Lane Closure with Barricade" details from portrait to landscape. Revised Legend to Truck/Trailer Mounted Attenuator. Adjusted trailing note callouts due to deleting what was previous note 14 on Sheet 2. Revised callout to "see note 19" and added new note 19.	
<b>E3-12</b>	<b>SHOULDER CLOSURE DETAILS</b>	
Sheet 1	Rotated "Work Zone with Barricades" and "Work Zone With Barrier" details from portrait to landscape. Revised leaders to point to sign cells in "Work Zone With Barriers". Revised Legend to Truck/Trailer Mounted Attenuator.	
<b>E5-12</b>	<b>TEMPORARY GORE DETAILS</b>	
Sheet 1	Relocated the R1-2 sign to start of taper and added note 3.	
Sheet 2	Relocated the R1-2 sign to start of taper and added note 3.	
<b>E6-10</b>	<b>CONTRACTOR ACCESS TO WORK AREA</b>	
Sheet 1	Added new note 16 and callout. Clarified limits of diagonals.	
Sheet 2	Revised direction of arrow on the R8-7 sign and revised callout for TEMPORARY CONCRETE BARRIER (TYP.)	
Sheet 3	Adjusted "Work Area"	
<b>E7-07</b>	<b>PULL-OUT AREA</b>	
Sheet 1	Added "MIN." to tapered section of Emergency Pull-Out.	



Retired Standard

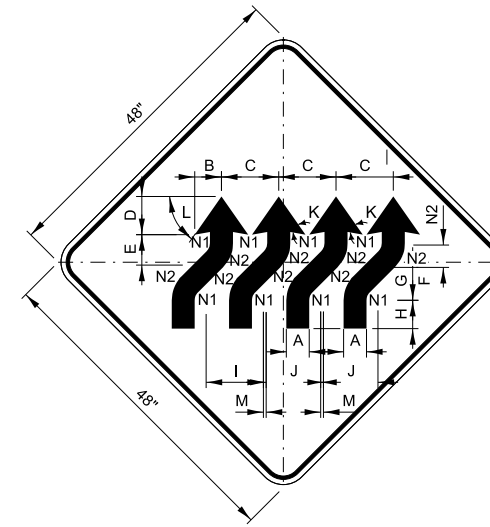
**New Sheet**



**SIGN TS-2 (O)**

COLOR: BACKGROUND - FLUORESCENT ORANGE (O)  
 BORDER AND LETTERS - BLACK  
 SIZE: 48"x48"  
 LETTERING: 7" FEDERAL SERIES C

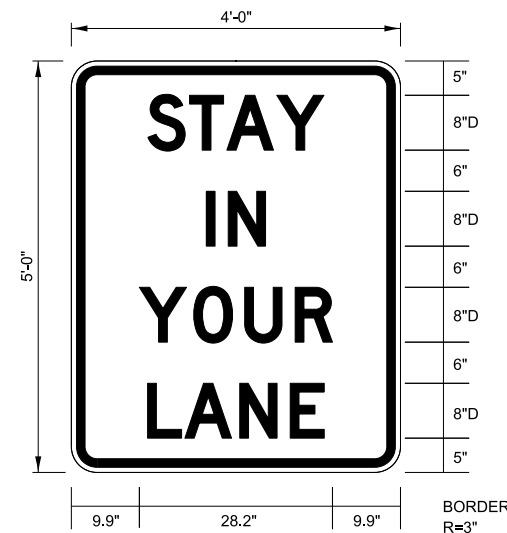
SIGN NO.	LEGEND	A	B
TS-2A	AHEAD	12.25"	12.25"
TS-2B	500 FT	13.53"	13.53"
TS-2C	1000 FT	15.17"	15.17"
TS-2D	1500 FT	14.87"	14.87"
TS-2E	½ MILE	15.01"	15.01"
TS-2F	1 MILE	11.63"	11.63"



**SIGN W1-4dR (O)**

COLOR: BACKGROUND-FLUORESCENT ORANGE (O)  
 TYPE A REFLECTIVE SHEETING PER STANDARD SPECIFICATIONS (\*A)  
 BORDER AND LETTERS-BLACK  
 SIZE: 48"x48"

A	4½"
B	5¾"
C	12½"
D	7¾"
E	6½"
F	4½"
G	6½"
H	6"
I	12¾"
J	12"
K	45°
L	55°
M	¾"
N1	2"
N2	6½"



**SIGN TS-3**

COLOR: BACKGROUND - WHITE (REFLECTORIZED) (\*A)  
 BORDER AND LETTERS - BLACK  
 SIZE: 48"x60"  
 LETTERING: LEGEND - 8" FEDERAL SERIES D

**NOTES:**

- ALL LETTERING IS DESIGNATED BY SIZE AND SERIES IN ACCORDANCE WITH THE LATEST EDITION OF "STANDARD ALPHABETS FOR HIGHWAY SIGNS AND PAVEMENT MARKINGS" AS PUBLISHED BY THE U.S. DEPARTMENT OF TRANSPORTATION. LETTERING SPACING SHALL BE IN ACCORDANCE WITH THIS GUIDE EXCEPT WHERE NOTED.
- SYMBOLS AND ARROWS SHALL CONFORM TO THE DETAILS SHOWN IN THE LATEST EDITION OF "STANDARD HIGHWAY SIGNS" AS PUBLISHED BY THE U.S. DEPARTMENT OF TRANSPORTATION.
- SEE THE CONTRACT REQUIREMENTS FOR ADDITIONAL NOTES AND SPECIFICATIONS.  
 (O) FLUORESCENT ORANGE REFLECTIVE SHEETING PER THE STANDARD SPECIFICATIONS.  
 (\*A) - REFLECTIVE SHEETING PER THE STANDARD SPECIFICATIONS.
- DIMENSIONS INDICATED THUS ∠ ARE BASED ON A REDUCTION IN STANDARD LETTERING SPACING AS SHOWN BELOW:  
 ∠1 SPACING REDUCED BY 25%  
 ∠2 SPACING REDUCED BY 40%  
 ∠3 SPACING REDUCED BY 50%

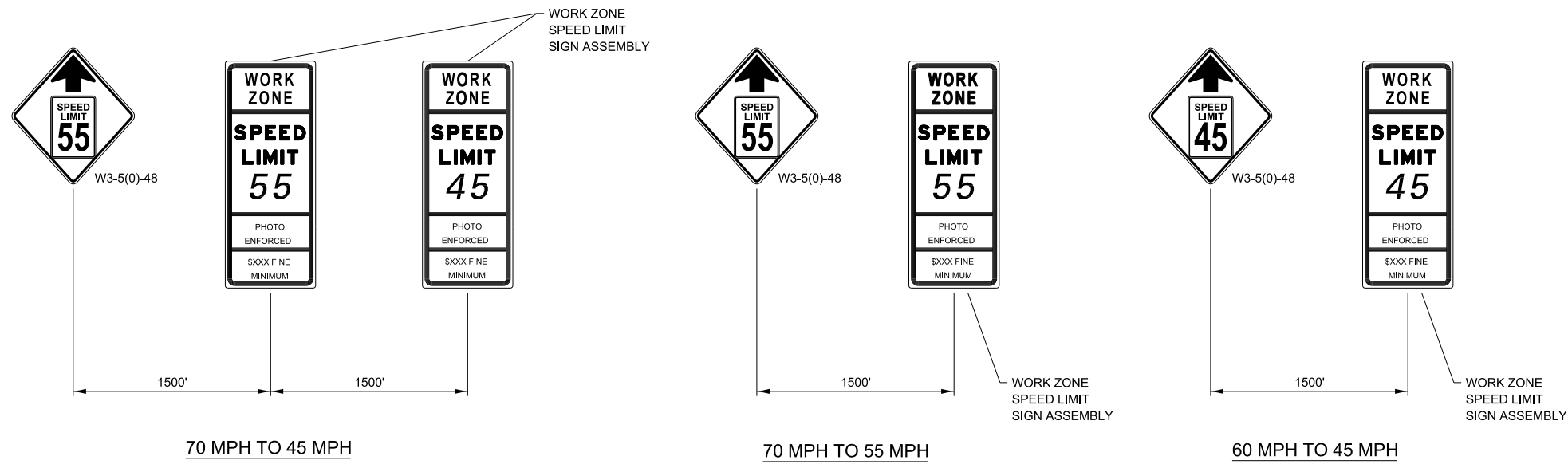


REVISIONS	
DATE	DESCRIPTION
03-01-2026	RETIRED SUPPLEMENTAL PLATE 100FT, TS-4, TS-5A/5B, TS-7, TS-10, MODIFIED TS-2 AND TS-6, AND REMOVED MOUNTING HOLES

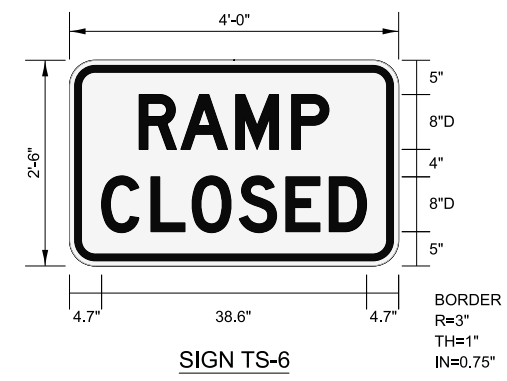
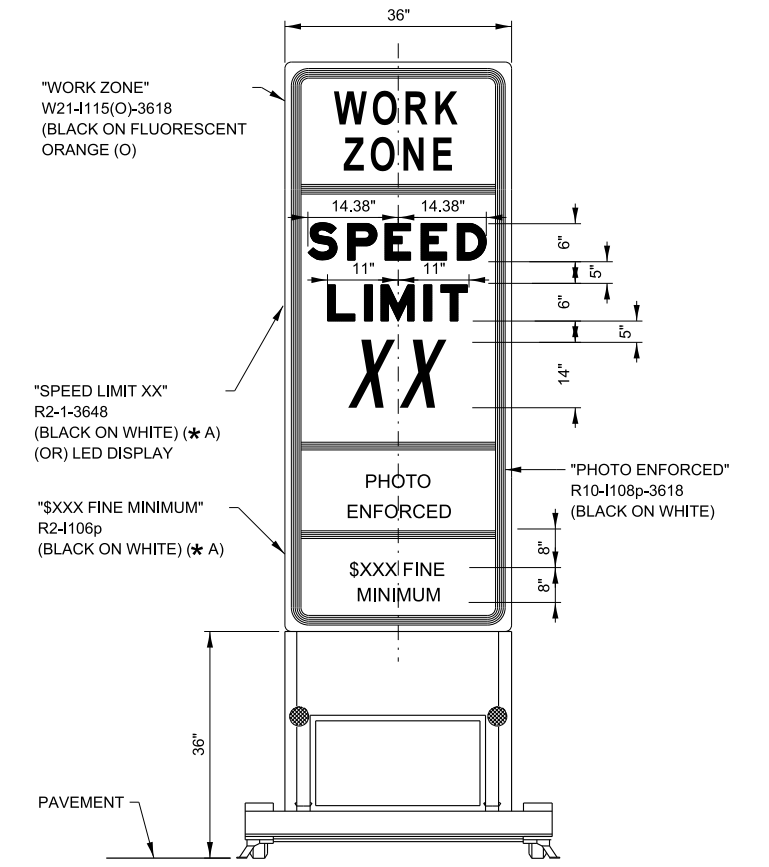
**CONSTRUCTION SIGNS**

VERSION: 2026-03      STANDARD: E1-08      SHEET: 1 OF 2

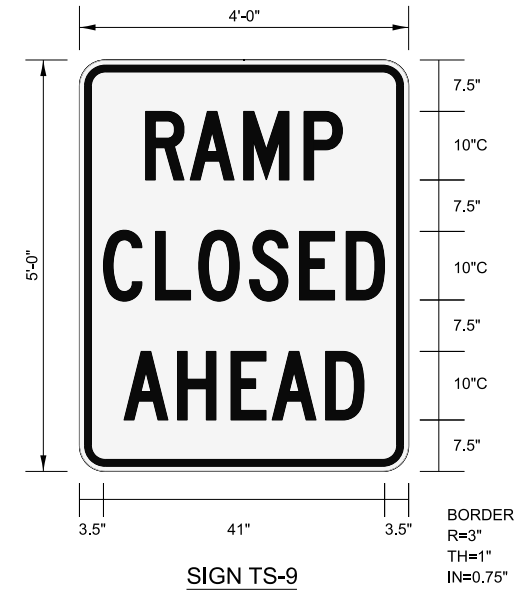
APPROVED BY: *Manar Nashif*  
 CHIEF ENGINEERING OFFICER  
 DATE: 03/01/2026



**WORK ZONE SPEED LIMIT TRANSITION SIGNAGE**



COLOR: BACKGROUND - WHITE (REFLECTORIZED) (\* A)  
 BORDER AND LETTERS - BLACK  
 SIZE: 48"x30"  
 LETTERING: 8" FEDERAL SERIES D



COLOR: BACKGROUND - WHITE (REFLECTORIZED) (\* A)  
 BORDER AND LETTERS - BLACK  
 SIZE: 48"x60"  
 LETTERING: 10" FEDERAL SERIES C

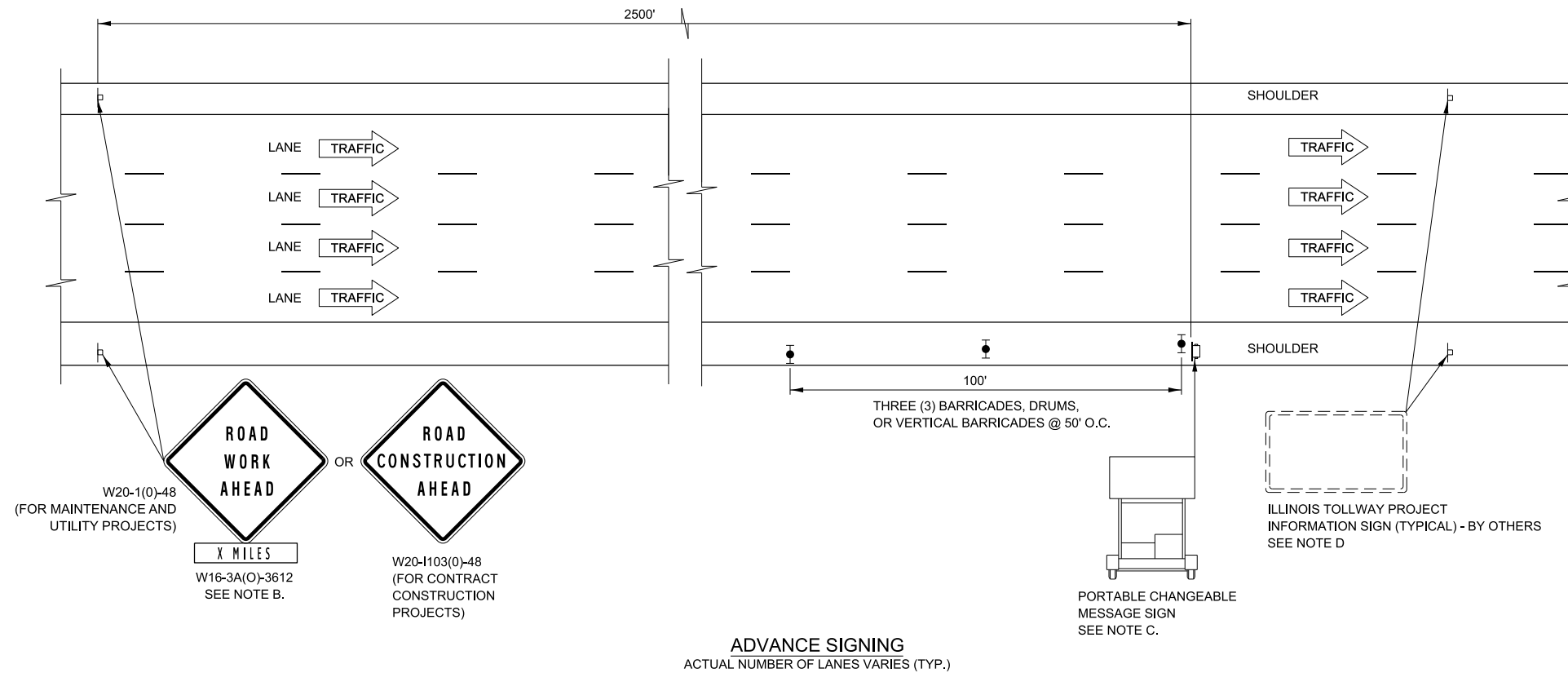
**WORK ZONE SPEED LIMIT SIGN ASSEMBLY**

APPROVED BY: *Manar Nashif*  
 CHIEF ENGINEERING OFFICER  
 DATE: 03/01/2026

NOTE:  
 SEE SHEET 1 OF THIS SERIES FOR NOTES.

**CONSTRUCTION SIGNS**

VERSION: 2026-03      STANDARD: E1-08      SHEET: 2 OF 2



**ADVANCE SIGNING NOTES:**

- A. THE ADVANCE SIGNING SHOWN ON THIS STANDARD SHALL APPLY ANY TIME THE CONTRACTOR CLOSES ONE OR MORE LANES, OR IS REQUIRED TO SHIFT THE LANE ALIGNMENT. THE "ROAD WORK AHEAD" OR "ROAD CONSTRUCTION AHEAD" SIGNS, WORK ZONE PUBLIC INFORMATION SIGNS AND PORTABLE CHANGEABLE MESSAGE ARE STATIONARY.
- B. THE ROAD CONSTRUCTION AHEAD SIGN (W20-1A, WITH W16-3a SUPPLEMENTAL PLATE) OR ROAD WORK AHEAD SIGN (W20-1, WITH W16-3A SUPPLEMENTAL PLATE) SHALL BE LOCATED UP TO 5 MILES IN ADVANCE OF THE PROJECT LIMITS, WITH THE LOCATION BEING DETERMINED BY THE ENGINEER.
- C. THE PORTABLE CHANGEABLE MESSAGE SIGN SHALL BE USED TO DISPLAY THE STATUS OF LANE WITHIN THE CONTRACT LIMITS. THE PRIMARY MESSAGES SHALL BE: "RIGHT LANE(S) CLOSED" / "x MILES AHEAD", "LEFT LANE(S) CLOSED" / "x MILES AHEAD", "LANE(S) SHIFT" / "x MILES AHEAD", "ALL LANES OPEN". THE PORTABLE CHANGEABLE MESSAGE SIGN MAY BE MOVED TO THE MEDIAN SHOULDER WHEN THE LANE CLOSURES ARE ON THE LEFT, PROVIDED THE EXISTING SHOULDER WIDTH IS ADEQUATE.
- D. THE ILLINOIS TOLLWAY WILL FURNISH AND INSTALL STATIC PROJECT INFORMATION SIGNS IN ADVANCE, THROUGH AND AT THE END OF THE WORK ZONE. THESE SIGNS WILL BE INSTALLED ALONG THE OUTSIDE SHOULDER WITH THE ADVANCE SIGNS LOCATED BEYOND THE PORTABLE CHANGEABLE MESSAGE SIGN. THE ENGINEER AND CONTRACTOR SHALL COORDINATE WITH THE ILLINOIS TOLLWAY REGARDING THE LOCATION OF THESE SIGNS AND NOTIFY THE ILLINOIS TOLLWAY OF ANY DAMAGE TO THE SIGNS OR SUPPORTS.

**LEGEND**

- ARROW BOARD
- WORK AREA
- SIGN
- DIRECTION INDICATOR BARRICADE WITH SEQUENTIAL FLASHING WARNING LIGHT
- TYPE II BARRICADE, DRUM, OR VERTICAL BARRICADE WITH LIGHT IF REQUIRED. SEE ARTICLE 701.05(a)(6)
- FLAGGER WITH TRAFFIC CONTROL SIGN
- LANE CLOSED
- CHECK BARRICADE
- TRUCK/TRAILER MOUNTED ATTENUATOR

APPROVED BY: DATE: 03/01/2026  
 CHIEF ENGINEERING OFFICER

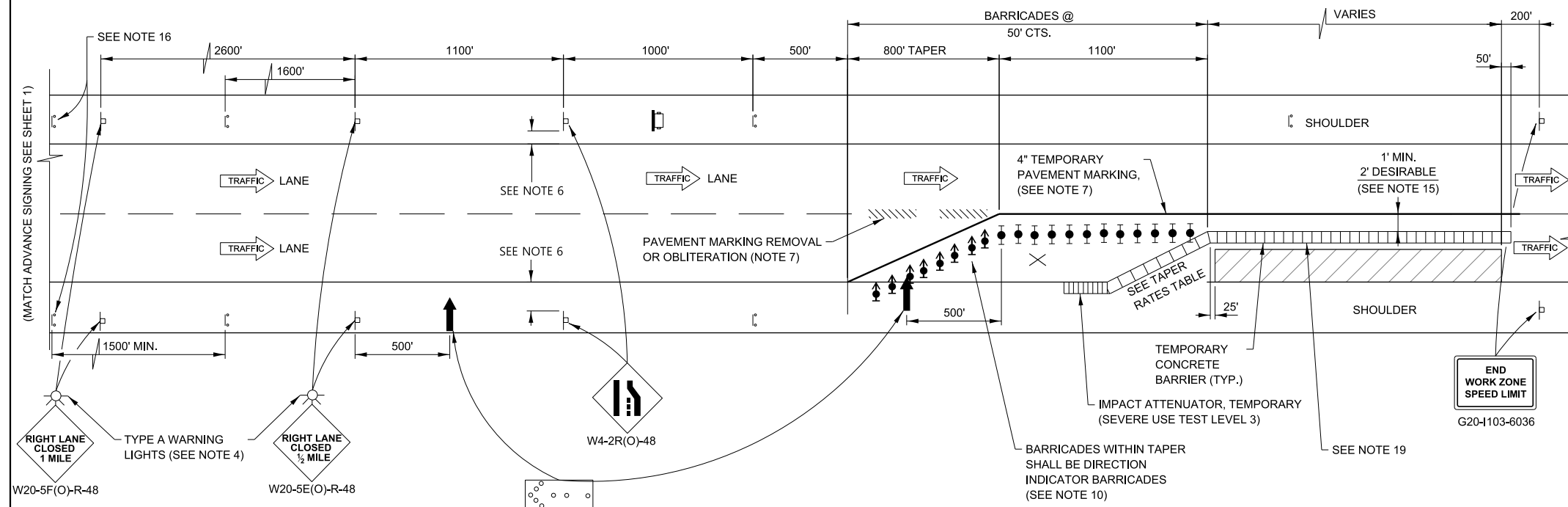
REVISIONS	
DATE	DESCRIPTION
03-01-2026	REVISED TO LANDSCAPE ORIENTATION, REVISED LEGEND TO TRUCK/TRAILER MOUNTED ATTENUATOR, DELETED PREVIOUS NOTE 14 AND ADJUSTED THE TRAILING NOTE CALLOUTS

**LANE CLOSURE DETAILS**

VERSION: 2026-03	STANDARD: E2-13	SHEET: 1 OF 3
------------------	-----------------	---------------

**LANE CLOSURE NOTES:**

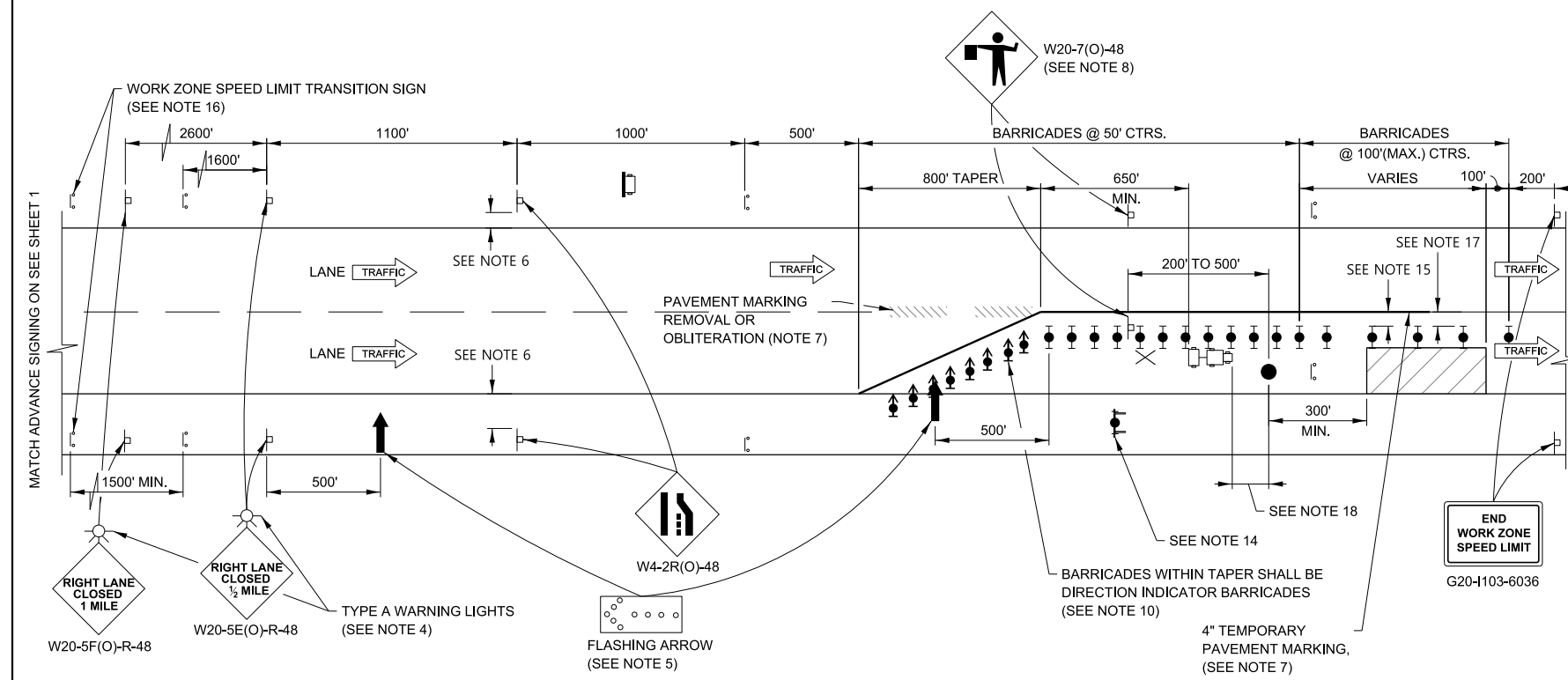
- IF CLOSURES ARE EXPECTED TO PRODUCE TRAFFIC BACKUPS EXTENDING BEYOND THE FIRST WARNING SIGN SHOWN ON THE DETAILS, ADDITIONAL UPSTREAM SIGNS SHALL BE PLACED SO THAT THE TRAFFIC CONTROL ZONE ENCOMPASSES THE ANTICIPATED BACKUP ZONE.
- LONGITUDINAL DIMENSIONS MAY BE ADJUSTED SLIGHTLY TO FIT FIELD CONDITIONS.
- THESE DETAILS ALSO APPLY TO OPPOSITE HAND LANE CLOSURES BY CHANGING SIGN LEGENDS AND ARROW DIRECTIONS TO INDICATE THE APPROPRIATE CLOSURE.
- FOR NIGHT TIME CLOSURES, ONE TYPE A WARNING LIGHT SHALL BE INSTALLED ABOVE EACH OF THE 1 MILE AND ½ MILE ADVANCE WARNING SIGNS. FOR DAYLIGHT - ONLY CLOSURES, THE LIGHTS MAY BE OMITTED.
- FOR ANY LANE CLOSURE, FLASHING ARROW BOARDS SHALL BE REQUIRED AND IN OPERATION AT ALL TIMES. THE FLASHING ARROW BOARD IN ADVANCE OF THE TAPER SHALL BE PROTECTED WITH THREE TYPE II BARRICADES AT 50' O.C.
- CONSTRUCTION SIGNS SHALL GENERALLY BE POST - MOUNTED OR ATTACHED TO PORTABLE SUPPORTS AND SHALL BE INSTALLED 8' TO 12' FROM ADJACENT TRAVEL LANE WHEREVER POSSIBLE. IN NO CASE SHALL SIGNS BE LOCATED TO PROVIDE LESS THAN 2' CLEARANCE BETWEEN EDGE OF SIGN AND ADJACENT TRAVEL LANE.
- PAVEMENT MARKING TAPE AND REMOVAL OR OBLITERATION OF EXISTING MARKINGS SHALL BE REQUIRED WHEN THE CLOSURE TIME EXCEEDS FOUR DAYS. THIS WORK SHALL BE MEASURED AND PAID FOR SEPARATELY.
- WHEN A FLAGGER IS NOT ON STATION, THE FLAGGER SIGN SHALL BE PROMPTLY REMOVED, COVERED OR TURNED TO FACE AWAY FROM TRAFFIC. FLAGGER SIGNS SHALL BE MOVED AS NECESSARY TO MAINTAIN THE REQUIRED SPACING BETWEEN THE SIGNS AND THE WORKERS IN EACH SEPARATE WORK ACTIVITY, PER THE ILLINOIS TOLLWAY SUPPLEMENTAL SPECIFICATIONS.
- WORK ZONE SPEED LIMIT SIGN ASSEMBLIES, SHALL BE PLACED ADJACENT TO THE OPEN TRAFFIC LANE(S). WORK ZONE SPEED SIGNS SHALL BE MOVED AS NECESSARY TO MAINTAIN THE REQUIRED SPACING BETWEEN SIGNS AND THE WORKERS IN EACH SEPARATE WORK ACTIVITY PER THE ILLINOIS TOLLWAY SUPPLEMENTAL SPECIFICATIONS.
- DIRECTION INDICATOR BARRICADES SHALL BE USED IN LANE TAPERS.
- FOR CLOSURES OTHER THAN SHORT TERM (SUNRISE TO ONE HOUR BEFORE SUNSET), THE MINIMUM HEIGHT OF THE SIGN FROM SHOULDER ELEVATION SHALL BE 7'-0".
- CONES MAY BE USED IN LIEU OF BARRICADES IN THE BUFFER AND WORK AREAS, WHEN THE CLOSURE IS FOR MAINTENANCE OPERATIONS.
- BARRICADES ARE TO BE LOCATED AT JOINT LINE WHEN WORK AREA EXTENDS UP TO JOINT UNLESS OTHERWISE SHOWN ON THE PLANS.
- CHECK BARRICADES SHALL BE PLACED IN EACH CLOSED LANE AND SHOULDER AT 1000 FOOT CENTERS.
- A 1'-0" MINIMUM/2'-0" DESIRABLE SHY DISTANCE SHALL BE PROVIDED, MEASURED BETWEEN EDGE OF PAVEMENT LANE MARKING TO THE EDGE OF THE TRAFFIC CONTROL DEVICE.
- SEE STANDARD E1 FOR ADDITIONAL SIGNAGE REQUIRED WHEN WORK ZONE SPEED LIMIT IS REDUCED BY MORE THAN 10 MPH. THE SPEED LIMIT SHALL BE TRANSITIONED TO THE SPECIFIED WORK ZONE SPEED LIMIT 2600 FEET BEFORE THE FIRST W4-2 SIGN.
- WHEN WORKERS OR EQUIPMENT ENCOACH WITHIN 3'-0" FROM THE EDGE OF TRAVELED WAY (INSIDE OF PAVEMENT MARKING LINE), THE LANE OPEN TO TRAFFIC SHALL BE TEMPORARILY CLOSED OR SHIFTED DURING WORK ACTIVITIES.
- IN WORK ZONES WITH NO POSITIVE PROTECTION, A TRUCK/TRAILER MOUNTED ATTENUATOR (TMA) SHALL BE PROVIDED WITH A BUFFER AREA BETWEEN THE FRONT OF THE TMA AND WORKERS OR EQUIPMENT. THE BUFFER AREA SHALL BE 200' UNLESS OTHERWISE DETERMINED. WHERE WORKERS OR EQUIPMENT ARE PRESENT BEYOND THE WORK AREA, AN ADDITIONAL TMA SHALL BE PROVIDED TO EACH WORK AREA. A WORK AREA IS DEFINED AS STARTING AT THE END OF THE BUFFER AREA, EXTENDING 1000 FEET BEYOND THIS POINT.
- WHEN WORK AREAS ARE LOCATED BEHIND TEMPORARY CONCRETE BARRIER, THE EQUIPMENT, MATERIALS AND WORKERS SHALL NOT BE WITHIN 3'-6" OR LESS BEHIND THE TOE OF FREE-STANDING TEMPORARY CONCRETE BARRIER OR WITHIN 1' OR LESS BEHIND THE TOE OF ANCHORED TEMPORARY CONCRETE BARRIER.



**ONE - LANE CLOSURE WITH BARRIER**  
N.T.S.

**TAPER RATES**

WORK ZONE SPEED (mph)	SHY LINE (ft.)	BARRIER INSIDE SHY LINE	BARRIER AT OR BEYOND SHY LINE
65	8.5	28:1	19:1
60	8	26:1	18:1
55	7	24:1	16:1
50	6.5	21:1	14:1
45	6	18:1	12:1
40	5	16:1	10:1
35	4.5	15:1	9:1
30	4	13:1	8:1



**ONE - LANE CLOSURE WITH BARRICADE**  
N.T.S.

**LEGEND**

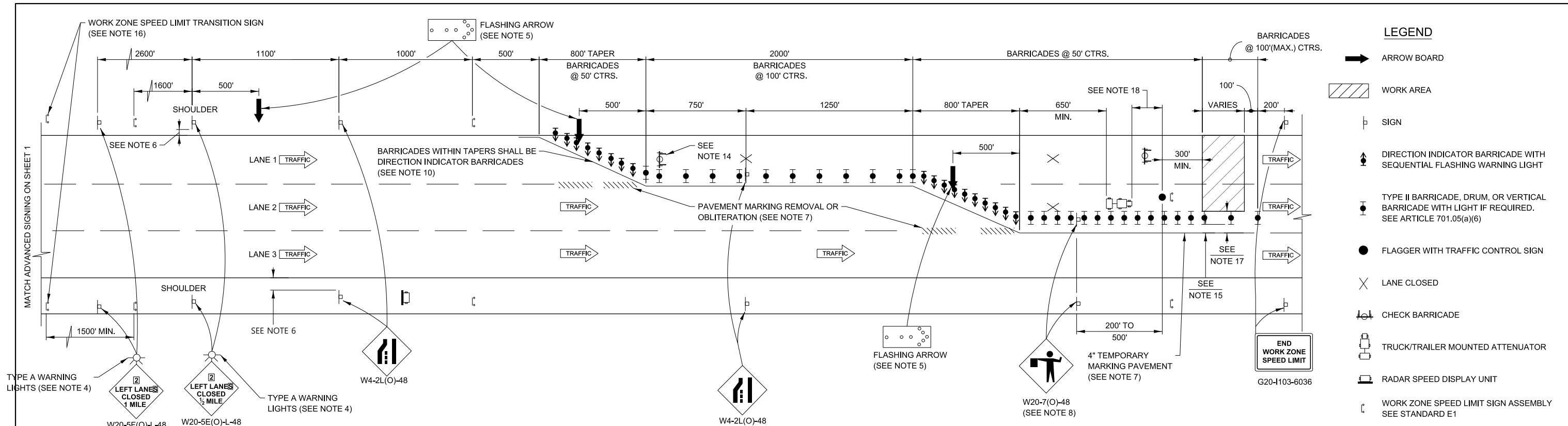
- ARROW BOARD
- WORK AREA
- SIGN
- DIRECTION INDICATOR BARRICADE WITH SEQUENTIAL FLASHING WARNING LIGHT
- TYPE II BARRICADE, DRUM, OR VERTICAL BARRICADE WITH LIGHT IF REQUIRED SEE ARTICLE 701.05(a)(6)
- WORK ZONE SPEED LIMIT SIGN ASSEMBLY SEE STANDARD E1
- FLAGGER WITH TRAFFIC CONTROL SIGN
- LANE CLOSED
- CHECK BARRICADE
- TRUCK/TRAILER MOUNTED ATTENUATOR
- RADAR SPEED DISPLAY UNIT

APPROVED BY: *Manar Nashif*  
CHIEF ENGINEERING OFFICER  
DATE: 03/01/2026

**Illinois Tollway**

**LANE CLOSURE DETAILS**

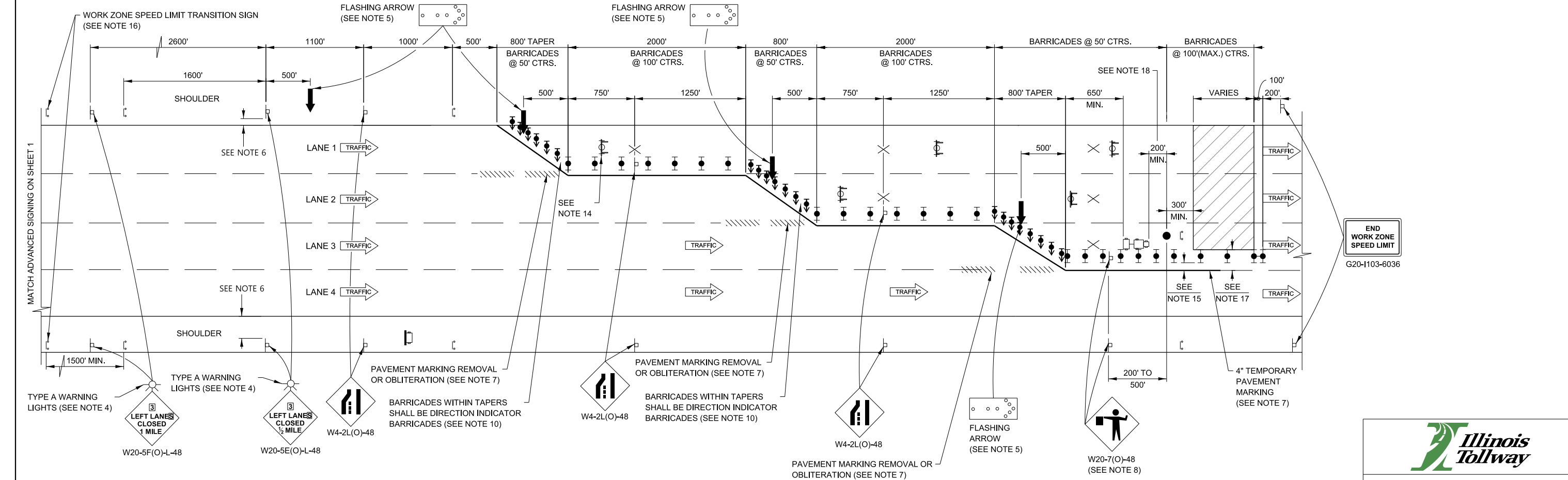
VERSION: 2026-03      STANDARD: E2-13      SHEET: 2 OF 3



- LEGEND**
- ➔ ARROW BOARD
  - ▨ WORK AREA
  - ⊥ SIGN
  - ⬆ DIRECTION INDICATOR BARRICADE WITH SEQUENTIAL FLASHING WARNING LIGHT
  - TYPE II BARRICADE, DRUM, OR VERTICAL BARRICADE WITH LIGHT IF REQUIRED. SEE ARTICLE 701.05(a)(6)
  - FLAGGER WITH TRAFFIC CONTROL SIGN
  - ✕ LANE CLOSED
  - ⊕ CHECK BARRICADE
  - ⊕ TRUCK/TRAILER MOUNTED ATTENUATOR
  - ⊕ RADAR SPEED DISPLAY UNIT
  - ⊕ WORK ZONE SPEED LIMIT SIGN ASSEMBLY SEE STANDARD E1

**TWO - LANE CLOSURE WITH BARRICADE**

ACTUAL NUMBER OF LANES VARIES (TYP.)  
N.T.S.



**THREE - LANE CLOSURE WITH BARRICADE**

N.T.S.

APPROVED BY:  
*Manar Nashif*  
CHIEF ENGINEERING OFFICER

DATE:  
03/01/2026

SEE SHEET 2 OF 3 FOR LANE CLOSURE NOTES





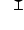
**LANE CLOSURE DETAILS**

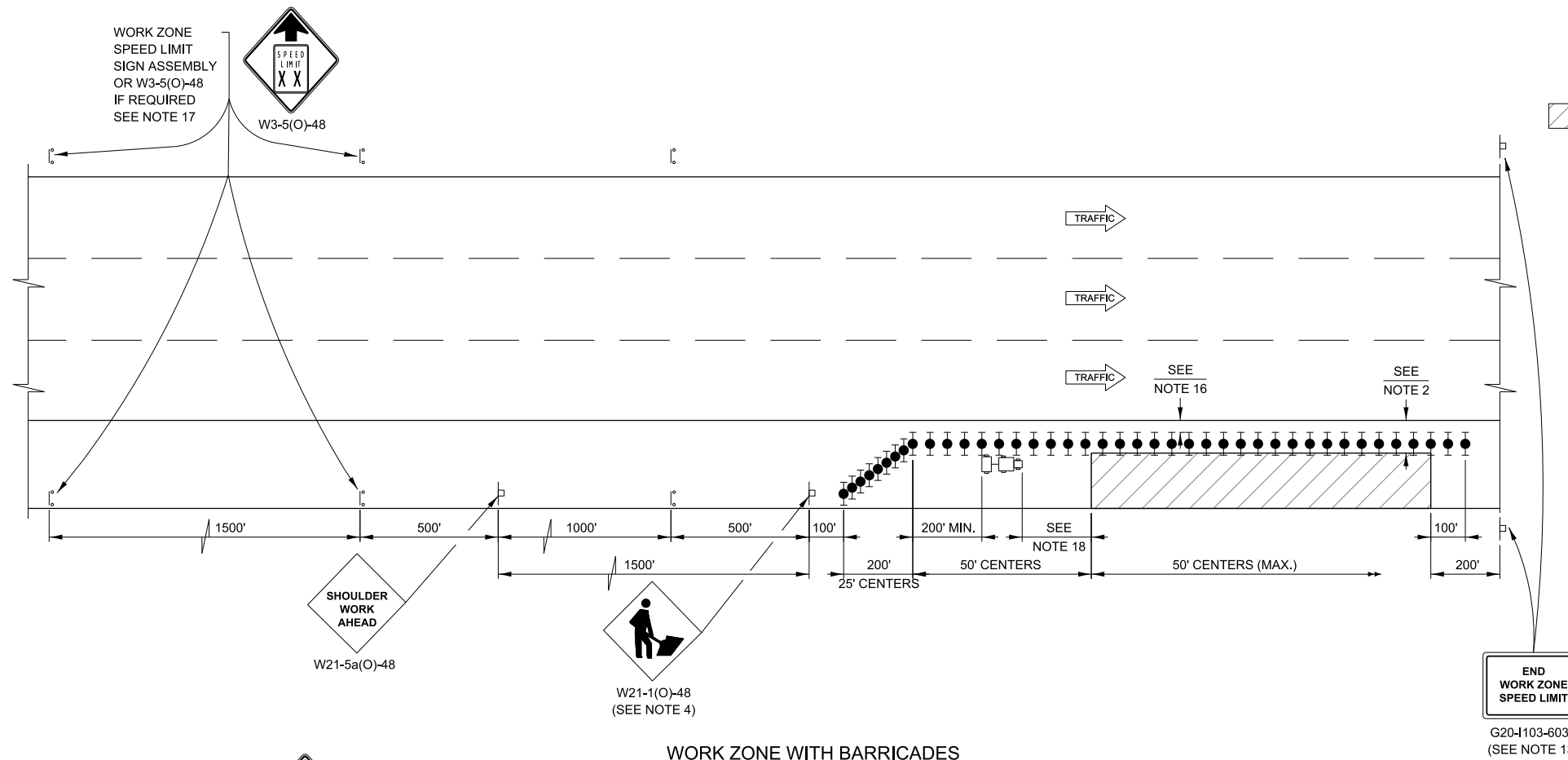
VERSION: 2026-03	STANDARD: E2-13	SHEET: 3 OF 3
---------------------	--------------------	------------------

**GENERAL NOTES:**

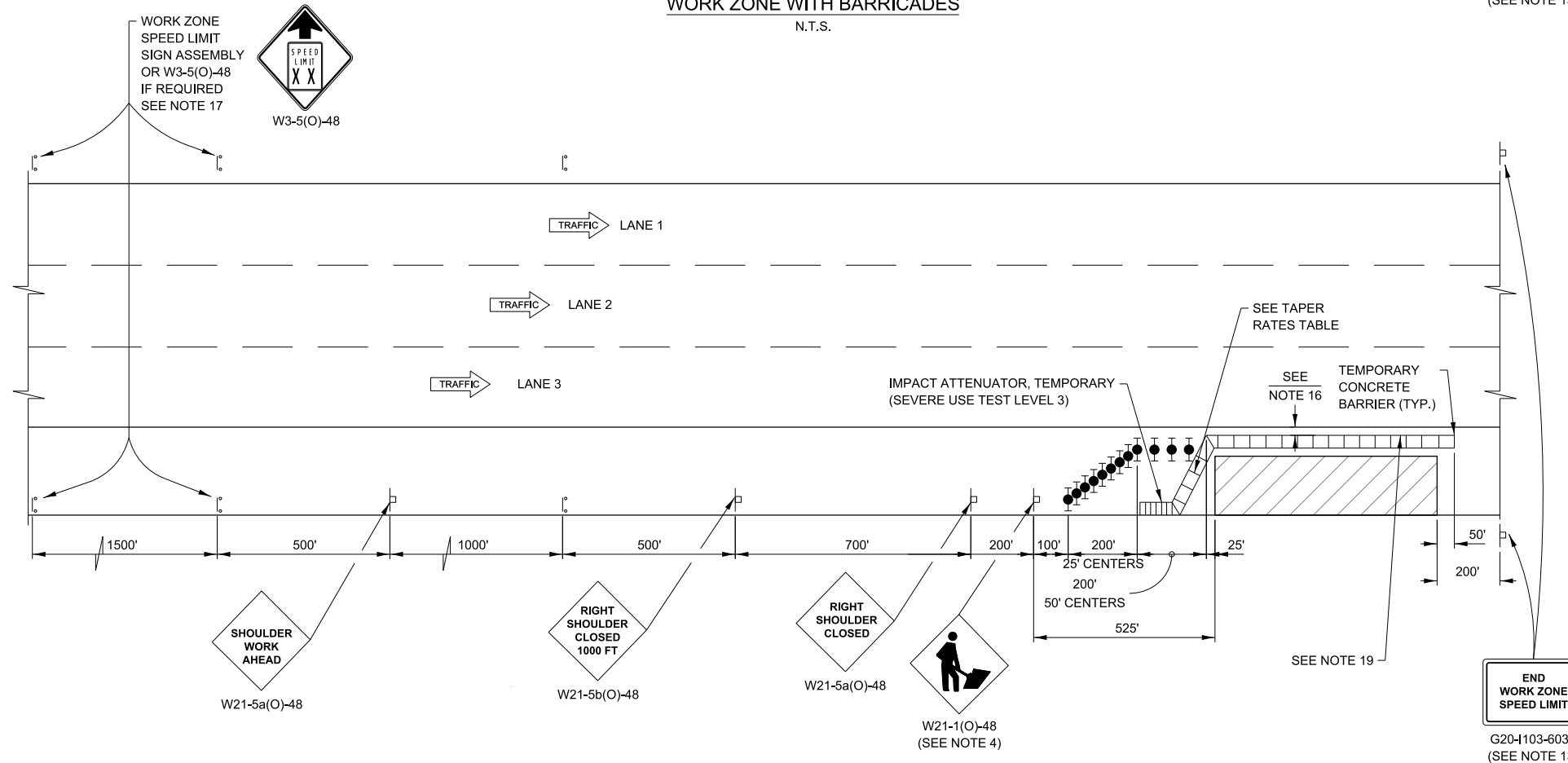
- THE SHOULDER SHALL BE CLOSED WHEN A WORK ACTIVITY REQUIRING 15 OR MORE MINUTES IS PERFORMED AT A DISTANCE WHICH IS LESS THAN 15 FEET BUT NO CLOSER THAN 3 FEET FROM THE EDGE OF TRAVELED WAY (INSIDE OF PAVEMENT MARKING LINE).
- THE ADJACENT EXTERIOR LANE SHALL BE CLOSED WHEN WORK IS PERFORMED WITHIN 3 FEET FROM THE EDGE OF TRAVELED WAY (INSIDE OF PAVEMENT MARKING LINE).
- THE CHANNELIZING DEVICES WHICH SEPARATE THE WORK SPACE FROM THE ADJACENT TRAVEL LANE SHALL BE SPACED AT 25' FOR (200 FEET) AND AT A MAXIMUM OF 50' FOR ALL ADDITIONAL DEVICES.
- WHEN THE WORK SITE IS UNATTENDED, SUBSTITUTE - "SHOULDER WORK AHEAD" SIGN.
- WORKER SIGNS OR SHOULDER WORK SIGNS AND CHANNELIZATION DEVICES ARE PLACED ONLY ON THE SIDE OF THE ROADWAY ON WHICH THE ACTIVITY IS PERFORMED.
- FOR SHOULDER CLOSURE EXTENDING OVERNIGHT, BARRICADE TYPE II SHALL BE USED. SEE ARTICLE 701.05(a)(6) FOR BARRICADE LIGHT REQUIREMENTS
- FOR SHORT TERM CLOSURE (SUNRISE TO ONE HOUR BEFORE SUNSET) NOT EXTENDING INTO DARKNESS, CONES MAY BE USED.
- ONE WORK ZONE SPEED LIMIT SIGN ASSEMBLY SHALL BE PLACED AT A DISTANCE OF 500' TO 2,500' MAXIMUM IN ADVANCE OF WORKERS THROUGHOUT THE SHOULDER CLOSURE. MOVING OPERATIONS MAY REQUIRE CONTINUOUS ADJUSTMENT OF THE SIGN ASSEMBLY LOCATION TO MAINTAIN THE ABOVE INTERVAL.
- AN ADDITIONAL SIGN ASSEMBLY SHALL BE PLACED 500' BEYOND THE LAST ENTRANCE RAMP FOR EACH INTERCHANGE THAT FALLS WITHIN THE 2,500'.
- THE SIGN ASSEMBLY SHALL BE PLACED NO CLOSER THAN 500' TO ANY OTHER SIGN.
- THE WORK ZONE SPEED LIMIT SIGNS AND SIGN ASSEMBLY SHALL BE PROMPTLY REMOVED OR COVERED WHEN SHOULDER CLOSURE IS REMOVED.
- ALL CONFLICTING SPEED LIMIT SIGNS SHALL BE COVERED OR REMOVED.
- "END WORK ZONE SPEED LIMIT" SIGNS SHALL BE IN PLACE ONLY WHEN THE EXISTING POSTED SPEED > 55MPH.
- FOR SHOULDER REPAIRS OR REPLACEMENT THE CHANNELIZING DEVICES SHALL BE PLACED AT THE EDGE OF PAVEMENT WHENEVER THE WORK ACTIVITIES RESULT IN A DROP OFF AT THE EDGE OF PAVEMENT.
- ANY UNATTENDED OBSTACLE OR EXCAVATION LEFT ON THE SHOULDER OVERNIGHT SHALL BE IN COMPLIANCE WITH THE ROADWAY TRAFFIC CONTROL AND COMMUNICATIONS MANUAL.
- A 1'-0" MINIMUM/2'-0" DESIRABLE SHY DISTANCE SHALL BE PROVIDED, MEASURED BETWEEN EDGE OF PAVEMENT LANE MARKING TO THE EDGE OF THE TRAFFIC CONTROL DEVICE.
- SEE STANDARD E1 FOR ADDITIONAL SIGNAGE REQUIRED WHEN WORK ZONE SPEED LIMIT IS REDUCED BY MORE THAN 10 MPH.
- IN WORK ZONES WITH NO POSITIVE PROTECTION, A TRUCK/TRAILER MOUNTED ATTENUATOR SHALL BE PROVIDED WITH A BUFFER AREA BETWEEN THE FRONT OF THE TMA AND WORKERS OR EQUIPMENT. THE BUFFER AREA SHALL BE 200' UNLESS OTHERWISE DETERMINED. WHERE WORKERS OR EQUIPMENT ARE PRESENT BEYOND THE WORK AREA, AN ADDITIONAL TMA SHALL BE PROVIDED FOR EACH WORK AREA IS DEFINED AS STARTING AT THE END OF THE BUFFER AREA, EXTENDING 1000 FEET BEYOND THIS POINT.
- WHEN WORK AREAS ARE LOCATED BEHIND TEMPORARY CONCRETE BARRIER, THE EQUIPMENT, MATERIALS AND WORKERS SHALL NOT BE WITHIN 3'-6" OR LESS BEHIND THE TOE OF FREE-STANDING TEMPORARY CONCRETE BARRIER OR WITHIN 1' OR LESS BEHIND THE TOE OF ANCHORED TEMPORARY CONCRETE BARRIER.

**LEGEND**

-  WORK AREA
-  SIGN
-  WORK ZONE SPEED LIMIT SIGN ASSEMBLY SEE STANDARD E1
-  TYPE II BARRICADE, DRUM, OR VERTICAL BARRICADE WITH LIGHT IF REQUIRED SEE ARTICLE 701.05(a)(6)
-  TRUCK/TRAILER MOUNTED ATTENUATOR



**WORK ZONE WITH BARRICADES**  
N.T.S.



**WORK ZONE WITH BARRIERS**  
N.T.S.

**TAPER RATES**

WORK ZONE SPEED (mph)	SHY LINE (ft.)	BARRIER INSIDE SHY LINE	BARRIER AT OR BEYOND SHY LINE
65	8.5	28:1	19:1
60	8	26:1	18:1
55	7	24:1	16:1
50	6.5	21:1	14:1
45	6	18:1	12:1
40	5	16:1	10:1
35	4.5	15:1	9:1
30	4	13:1	8:1

REVISIONS	
DATE	DESCRIPTION
03-01-2026	REVISED TO LANDSCAPE ORIENTATION, REVISED LEGEND TO TRUCK/TRAILER MOUNTED ATTENUATOR.
03-01-2025	REVISED NOTE 1 AND 2 TO INCREASE BUFFER TO ACTIVE LANES

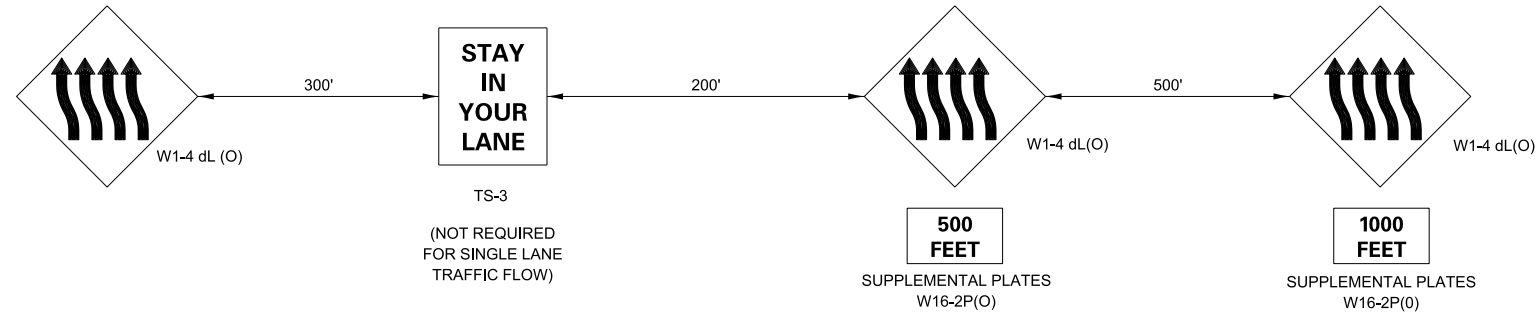
**Illinois Tollway**

**SHOULDER CLOSURE DETAILS**

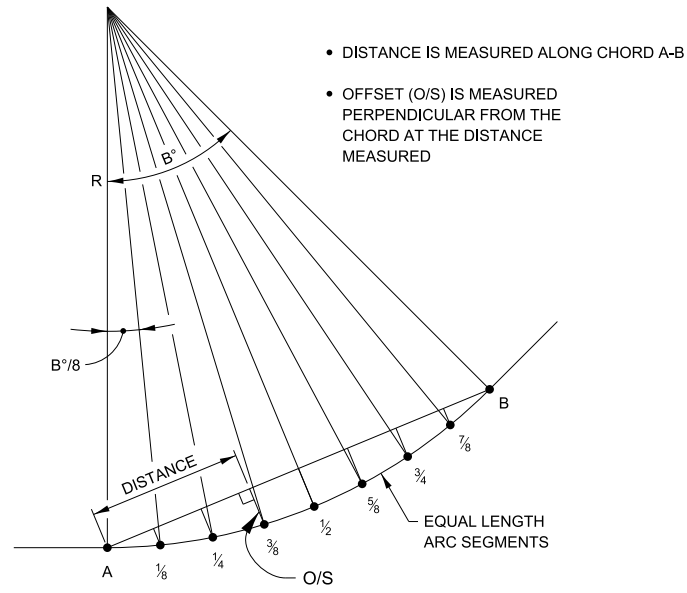
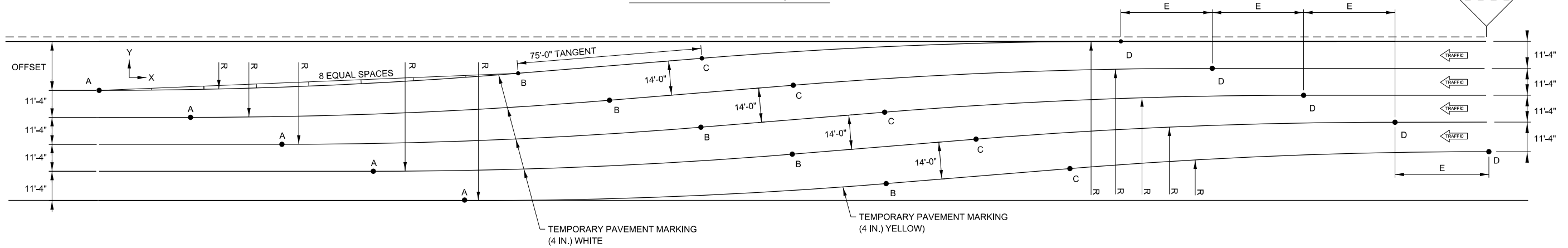
VERSION: 2026-03      STANDARD: E3-12      SHEET: 1 OF 1

APPROVED BY: *Manar Nashif*  
CHIEF ENGINEERING OFFICER

DATE: 03/01/2026



**ADVANCE WARNING SEQUENCE**



**CHORD OFFSET SKETCH**

- DISTANCE IS MEASURED ALONG CHORD A-B
- OFFSET (O/S) IS MEASURED PERPENDICULAR FROM THE CHORD AT THE DISTANCE MEASURED

**GENERAL NOTES:**

1. REVERSE CURVE INFORMATION CAN BE USED FOR SINGLE LANE OR MULTILANE TRAFFIC FLOWS, SHIFTING RIGHT TO LEFT (AS SHOWN) OR LEFT TO RIGHT BY CHANGING TO THE APPROPRIATE ADVANCE WARNING SEQUENCE.
2. THE REVERSE CURVE SHALL NOT BE USED OUTSIDE THE ACTIVITY AREA. LANE SHIFTS IN ADVANCE OF OR ON THE APPROACH TO THE ACTIVITY AREA SHALL BE IMPLEMENTED WITH A SHIFT RATE OF 65:1.
3. LANE SHIFTS FOR DEPARTURES OUT OF THE ACTIVITY AREA SHALL BE IMPLEMENTED WITH A SHIFT RATE OF 65:1.

APPROVED BY: *Paul Kovacs*  
 CHIEF ENGINEERING OFFICER  
 DATE: 03/31/2017

REVISIONS	
DATE	DESCRIPTION
03-31-2017	REVISED TABLE DATA ON SHEET 2.
03-31-2016	REVISED TABLE DATA ON SHEET 2.
03-11-2015	REVISED NOTES AND ADDED RADIUS DIMENSIONS TO TABLES.
03-31-2014	REVISED CURVE DATA PER MPH AND REVISED NOTES.

**MAINTENANCE OF TRAFFIC REVERSE CURVE**

VERSION: 2017-03      STANDARD: E4-07      SHEET: 1 OF 2

TYPE I (45 MPH) (RADIUS: 2100')

OFFSET	E	B	POINT LAY-OUT								CHORD OFFSET DATA							
			A		B		C		D		1/8 & 7/8		1/4 & 3/4		3/8 & 5/8		1/2	
			X	Y	X	Y	X	Y	X	Y	O/S	DIST	O/S	DIST	O/S	DIST	O/S	DIST
10	50.23	3.06	0	0	112.2	3.0	187.1	7.0	299.2	10.0	0.3	14.0	0.6	28.0	0.7	42.1	0.7	56.1
12	44.94	3.43	0	0	125.6	3.8	200.4	8.2	326.0	12.0	0.4	15.7	0.7	31.4	0.9	47.1	0.9	62.8
14	40.96	3.77	0	0	138.0	4.5	212.8	9.5	350.8	14.0	0.5	17.3	0.9	34.5	1.1	51.8	1.1	69.0
16	37.86	4.08	0	0	149.5	5.3	224.3	10.7	373.9	16.0	0.6	18.7	1.0	37.4	1.2	56.1	1.3	74.8
18	35.34	4.38	0	0	160.4	6.1	235.2	11.9	395.6	18.0	0.7	20.1	1.2	40.1	1.4	60.2	1.5	80.3
20	33.26	4.66	0	0	170.7	7.0	245.5	13.0	416.2	20.0	0.8	21.4	1.3	42.7	1.6	64.1	1.7	85.4
22	31.50	4.93	0	0	180.5	7.8	255.3	14.2	435.8	22.0	0.9	22.6	1.5	45.2	1.8	67.8	1.9	90.4
24	30.00	5.19	0	0	189.9	8.6	264.6	15.4	454.6	24.0	0.9	23.8	1.6	47.5	2.0	71.3	2.2	95.1
26	28.68	5.44	0	0	199.0	9.4	273.6	16.6	472.6	26.0	1.0	24.9	1.8	49.8	2.2	74.7	2.4	99.6
28	27.53	5.67	0	0	207.7	10.3	282.3	17.7	489.9	28.0	1.1	26.0	1.9	52.0	2.4	78.0	2.6	104.0
30	26.51	5.90	0	0	216.0	11.1	290.6	18.9	506.7	30.0	1.2	27.0	2.1	54.1	2.6	81.1	2.8	108.2
32	25.59	6.13	0	0	224.2	12.0	298.7	20.0	522.9	32.0	1.3	28.0	2.3	56.1	2.8	84.2	3.0	112.2
34	24.76	6.34	0	0	232.0	12.9	306.6	21.1	538.6	34.0	1.4	29.0	2.4	58.1	3.0	87.1	3.2	116.2
36	24.02	6.55	0	0	239.7	13.7	314.2	22.3	553.8	36.0	1.5	30.0	2.6	60.0	3.2	90.0	3.4	120.0
38	23.33	6.76	0	0	247.1	14.6	321.6	23.4	568.7	38.0	1.6	30.9	2.7	61.9	3.4	92.8	3.7	123.8
40	22.71	6.96	0	0	254.3	15.5	328.8	24.5	583.1	40.0	1.7	31.8	2.9	63.7	3.6	95.5	3.9	127.4
42	22.13	7.15	0	0	261.4	16.3	335.8	25.7	597.2	42.0	1.8	32.7	3.1	65.4	3.8	98.2	4.1	131.0
44	21.60	7.34	0	0	268.3	17.2	342.7	26.8	611.0	44.0	1.9	33.6	3.2	67.2	4.0	100.8	4.3	134.4
46	21.11	7.53	0	0	275.0	18.1	349.4	27.9	624.4	46.0	2.0	34.4	3.4	68.9	4.2	103.3	4.5	137.8
48	20.65	7.71	0	0	281.6	19.0	356.0	29.0	637.6	48.0	2.1	35.2	3.6	70.5	4.5	105.8	4.7	141.1
50	20.22	7.89	0	0	288.1	19.9	362.4	30.1	650.5	50.0	2.2	36.1	3.7	72.2	4.7	108.3	5.0	144.4
52	19.82	8.06	0	0	294.4	20.7	368.7	31.3	663.1	52.0	2.3	36.9	3.9	73.7	4.9	110.7	5.2	147.6
54	19.44	8.23	0	0	300.6	21.6	374.9	32.4	675.5	54.0	2.4	37.6	4.1	75.3	5.1	113.0	5.4	150.7
56	19.09	8.40	0	0	306.7	22.5	380.9	33.5	687.7	56.0	2.5	38.4	4.2	76.8	5.3	115.3	5.6	153.8
58	18.76	8.56	0	0	312.7	23.4	386.9	34.6	699.6	58.0	2.6	39.2	4.4	78.3	5.5	117.6	5.9	156.8
60	18.44	8.73	0	0	318.6	24.3	392.7	35.7	711.4	60.0	2.7	39.9	4.6	79.8	5.7	119.8	6.1	159.8

TYPE II (50-55 MPH) (RADIUS: 3100')

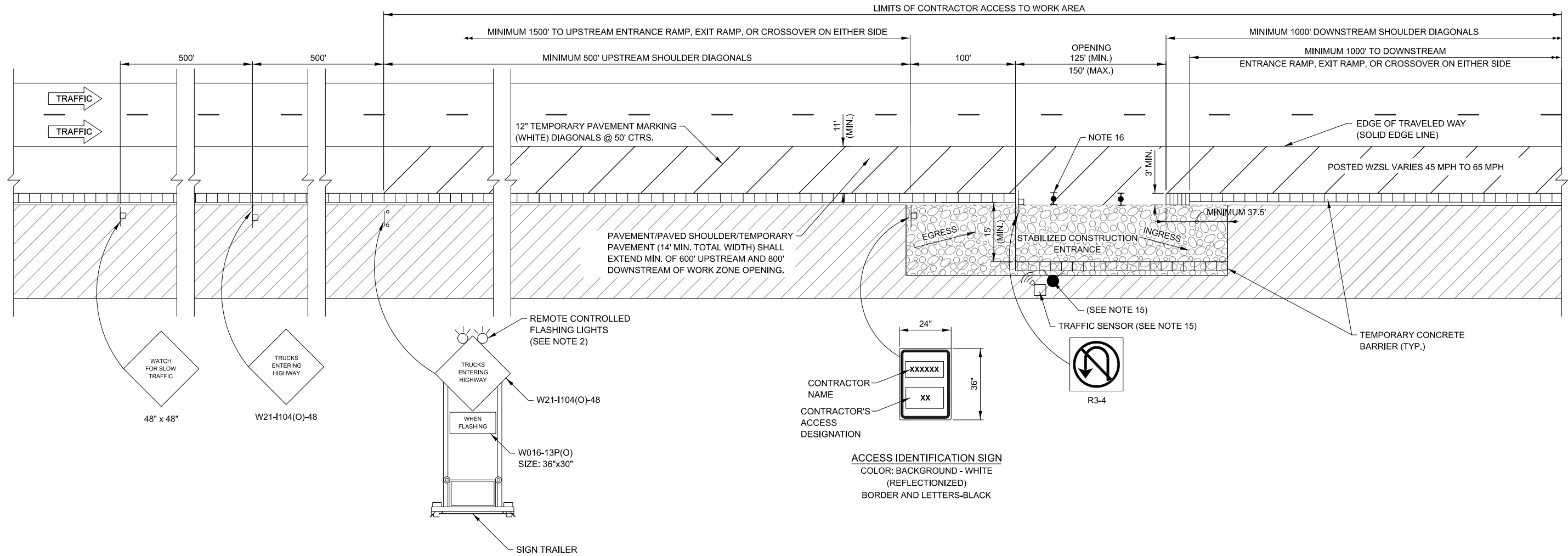
OFFSET	E	B	POINT LAY-OUT								CHORD OFFSET DATA							
			A		B		C		D		1/8 & 7/8		1/4 & 3/4		3/8 & 5/8		1/2	
			X	Y	X	Y	X	Y	X	Y	O/S	DIST	O/S	DIST	O/S	DIST	O/S	DIST
10	58.28	2.63	0	0	142.5	3.3	217.4	6.7	359.9	10.0	0.4	17.8	0.6	35.6	0.8	53.4	0.8	71.3
12	52.30	2.94	0	0	158.9	4.1	233.8	7.9	392.8	12.0	0.4	19.9	0.8	39.7	1.0	59.6	1.0	79.5
14	47.80	3.22	0	0	174.1	4.9	249.0	9.1	423.1	14.0	0.5	21.8	0.9	43.5	1.1	65.3	1.2	87.1
16	44.25	3.48	0	0	188.3	5.7	263.1	10.3	451.4	16.0	0.6	23.5	1.1	47.1	1.3	70.6	1.4	94.2
18	41.38	3.73	0	0	201.6	6.6	276.4	11.4	478.0	18.0	0.7	25.2	1.2	50.4	1.5	75.6	1.6	100.8
20	38.99	3.96	0	0	214.2	7.4	289.0	12.6	503.2	20.0	0.8	26.8	1.4	53.6	1.7	80.4	1.9	107.2
22	36.96	4.18	0	0	226.2	8.3	301.0	13.7	527.2	22.0	0.9	28.3	1.5	56.6	1.9	84.9	2.1	113.2
24	35.22	4.40	0	0	237.7	9.1	312.5	14.9	550.1	24.0	1.0	29.7	1.7	59.5	2.1	89.2	2.3	118.9
26	33.70	4.60	0	0	248.7	10.0	323.5	16.0	572.1	26.0	1.1	31.1	1.9	62.2	2.3	93.3	2.5	124.4
28	32.36	4.80	0	0	259.3	10.9	334.0	17.1	593.3	28.0	1.2	32.4	2.0	64.9	2.5	97.3	2.7	129.8
30	31.16	4.99	0	0	269.5	11.7	344.2	18.3	613.8	30.0	1.3	33.7	2.2	67.4	2.8	101.2	2.9	134.9
32	30.10	5.17	0	0	279.4	12.6	354.1	19.4	633.6	32.0	1.4	34.9	2.4	69.9	3.0	104.9	3.2	139.9
34	29.13	5.35	0	0	289.0	13.5	363.7	20.5	652.7	34.0	1.5	36.2	2.5	72.3	3.2	108.5	3.4	144.7
36	28.25	5.52	0	0	298.4	14.4	373.0	21.6	671.4	36.0	1.6	37.3	2.7	74.7	3.4	112.0	3.6	149.4
38	27.45	5.69	0	0	307.4	15.3	382.1	22.7	689.5	38.0	1.7	38.5	2.9	76.9	3.6	115.4	3.8	153.9
40	26.72	5.86	0	0	316.3	16.2	390.9	23.8	707.1	40.0	1.8	39.6	3.0	79.1	3.8	118.7	4.0	158.3
42	26.04	6.02	0	0	324.9	17.1	399.5	24.9	724.3	42.0	1.9	40.6	3.2	81.3	4.0	122.0	4.3	162.7
44	25.41	6.17	0	0	333.3	18.0	407.9	26.0	741.1	44.0	2.0	41.7	3.4	83.4	4.2	125.1	4.5	166.9
46	24.83	6.32	0	0	341.5	18.9	416.1	27.1	757.6	46.0	2.1	42.7	3.5	85.5	4.4	128.2	4.7	171.0
48	24.29	6.47	0	0	349.6	19.8	424.1	28.2	773.6	48.0	2.2	43.7	3.7	87.5	4.6	131.3	4.9	175.1
50	23.78	6.62	0	0	357.4	20.7	431.9	29.3	789.4	50.0	2.3	44.7	3.9	89.5	4.8	134.2	5.2	179.0
52	23.31	6.76	0	0	365.2	21.6	439.6	30.4	804.8	52.0	2.4	45.7	4.0	91.4	5.1	137.2	5.4	182.9
54	22.86	6.91	0	0	372.7	22.5	447.2	31.5	819.9	54.0	2.5	46.6	4.2	93.3	5.3	140.0	5.6	186.7
56	22.44	7.04	0	0	380.2	23.4	454.6	32.6	834.8	56.0	2.6	47.6	4.4	95.2	5.5	142.8	5.9	190.5
58	22.05	7.18	0	0	387.5	24.3	461.9	33.7	849.4	58.0	2.7	48.5	4.6	97.0	5.7	145.6	6.1	194.1
60	21.67	7.31	0	0	394.7	25.2	469.1	34.8	863.7	60.0	2.8	49.4	4.7	98.8	5.9	148.3	6.3	197.7

TYPE III (60-65 MPH) (RADIUS: 4400')

OFFSET	E	B	POINT LAY-OUT								CHORD OFFSET DATA							
			A		B		C		D		1/8 & 7/8		1/4 & 3/4		3/8 & 5/8		1/2	
			X	Y	X	Y	X	Y	X	Y	O/S	DIST	O/S	DIST	O/S	DIST	O/S	DIST
10	67.06	2.29	0	0	175.6	3.5	250.5	6.5	426.1	10.0	0.4	21.9	0.7	43.9	0.8	65.8	0.9	87.8
12	60.34	2.54	0	0	195.3	4.3	270.2	7.7	465.5	12.0	0.5	24.4	0.8	48.8	1.0	73.2	1.1	97.7
14	55.24	2.78	0	0	213.5	5.2	288.4	8.8	501.8	14.0	0.6	26.7	1.0	53.4	1.2	80.1	1.3	106.8
16	51.22	3.00	0	0	230.4	6.0	305.3	10.0	535.7	16.0	0.7	28.8	1.1	57.6	1.4	86.4	1.5	115.2
18	47.95	3.21	0	0	246.3	6.9	321.2	11.1	567.5	18.0	0.8	30.8	1.3	61.6	1.6	92.4	1.7	123.2
20	45.22	3.41	0	0	261.4	7.8	336.3	12.2	597.7	20.0	0.9	32.7	1.5	65.4	1.8	98.1	1.9	130.8
22	42.90	3.59	0	0	275.8	8.6	350.6	13.4	626.4	22.0	0.9	34.5	1.6	69.0	2.0	103.5	2.2	137.9
24	40.91	3.77	0	0	289.5	9.5	364.3	14.5	653.8	24.0	1.0	36.2	1.8	72.4	2.2	108.6	2.4	144.8
26	39.16	3.94	0	0	302.6	10.4	377.5	15.6	680.1	26.0	1.1	37.8	2.0	75.7	2.4	113.6	2.6	151.4
28	37.62	4.11	0	0	315.3	11.3	390.1	16.7	705.4	28.0	1.2	39.4	2.1	78.9	2.7	118.3	2.8	157.8
30	36.24	4.27	0	0	327.5	12.2	402.3	17.8	729.9	30.0	1.3	41.0	2.3	81.9	2.9	122.9	3.1	163.9
32	35.01	4.42	0	0	339.4	13.1	414.2	18.9	753.5	32.0	1.4	42.4	2.5	84.9	3.1	127.4	3.3	169.8
34	33.90	4.57	0	0	350.8	14.0	425.6	20.0	776.4	34.0	1.5	43.9	2.6	87.8	3.3	131.7	3.5	175.6
36	32.88	4.72	0	0	362.0	14.9	436.7	21.1	798.7	36.0	1.6	45.3	2.8	90.6	3.5	135.8	3.7	181.1
38	31.95	4.86	0	0														







**TYPE A : CONTRACTOR ACCESS TO WORK AREA WITH TEMPORARY CONCRETE BARRIER WITH FULL SHOULDER**

**NOTES:**

- SIGNS DESIGNATED FOR THIS ACCESS TO WORK AREA SHALL BE COVERED OR TURNED AWAY FROM THE TRAFFIC WHEN THE ACCESS OPENINGS ARE NOT IN USE.
- THE FLASHING WARNING LIGHT SHALL MEET THE REQUIREMENTS OF ILLINOIS TOLLWAY SUPPLEMENTAL SPECIFICATIONS AND BE OPERATED REMOTELY. THE LIGHTS SHALL BE FLASHING ONLY WHEN A VEHICLE IS ENTERING THE ILLINOIS TOLLWAY.
- WHEN THREE LANES OR MORE ARE OPENED TO TRAFFIC, ADVANCE WARNING SIGNS AND ASSEMBLIES SHALL BE PROVIDED ON BOTH SIDES OF TRAVELED WAY.
- WHEN CONTRACTOR ACCESS TO WORK AREA IS ON OPPOSITE SIDE FROM SHOWN, ALL INSTALLATIONS ARE MIRROR IMAGE.
- FOR NIGHTTIME OPERATIONS, TEMPORARY LIGHTING OF CONSTRUCTION ACCESS TO WORK AREA SHALL BE PROVIDED.
- TEMPORARY PAVEMENT MARKINGS SHALL BE REPLACED AS OFTEN AS NECESSARY TO DELINEATE OPENINGS.
- IF POSSIBLE, LANE CLOSURES SHALL BE UTILIZED TO ELIMINATE THE MERGING OF CONSTRUCTION TRAFFIC INTO THROUGH TRAFFIC LANES.
- A 1'-0" MINIMUM/2'-0" DESIRABLE SHY DISTANCE SHALL BE PROVIDED, MEASURED BETWEEN EDGE OF PAVEMENT LANE MARKING TO THE EDGE OF THE TRAFFIC CONTROL DEVICES.
- "TRUCKS ENTERING HIGHWAY" SIGN MAY BE SUPPORTED BY OPTIONAL POST OR STAND MOUNTED DEVICES WHEN POSITIONED BEHIND TEMPORARY CONCRETE BARRIER.
- CONTRACTOR ACCESS LOCATIONS SHALL BE SPACED NO CLOSER THAN HALF A MILE BETWEEN AREAS, EXCEPT FOR BRIDGE WORK WHERE ONE ACCESS LOCATION MAY BE PROVIDED ON EACH SIDE OF THE STRUCTURE. AT THESE LOCATIONS, ONLY ONE ACCESS LOCATION AT A TIME WILL BE ALLOWED TO BE OPEN FOR USE.
- EXITING THE WORK ZONE AT ANY PLACE OTHER THAN AT WORK ZONE EXIT OPENING WILL BE PROHIBITED.
- ALL VEHICLES SHALL USE THEIR TURN SIGNALS TO WARN MOTORISTS WHEN ENTERING AND EXITING THE WORK ZONE OPENINGS.
- FLAGGERS SHALL NOT STOP TRAFFIC OR DIRECT TRAFFIC INTO AN ADJACENT LANE.
- IN WORK ZONES WITH NO POSITIVE PROTECTION, A TRUCK MOUNTED ATTENUATOR (TMA) SHALL BE PROVIDED WITH A BUFFER AREA BETWEEN THE FRONT OF THE TMA AND WORKERS OR EQUIPMENT. THE BUFFER AREA SHALL BE 200' UNLESS OTHERWISE DETERMINED. WHERE WORKERS OR EQUIPMENT ARE PRESENT BEYOND THE WORK AREA, AN ADDITIONAL TMA SHALL BE PROVIDED FOR EACH WORK AREA. A WORK AREA IS DEFINED AS STARTING AT THE END OF THE BUFFER AREA, EXTENDING 1000 FEET BEYOND THIS POINT.
- USE OF FLAGGER/SPOTTER IS OPTIONAL WHEN A TRAFFIC SENSOR IS PRESENT. TRAFFIC SENSOR IS NOT REQUIRED IF FLAGGER IS USED.
- WHEN CONSTRUCTION ENTRANCE NOT IN USE, PLACE DRUMS AT 25' SPACING.

**LEGEND**

- FLAGGER
- SPOTTER
- CONSTRUCTION SIGN ON SUPPORT PER ILLINOIS TOLLWAY STANDARD UNLESS NOTED
- DIRECTION OF TRAFFIC FLOW
- WORK AREA
- DRUM WITH LIGHT IF REQUIRED SEE ARTICLE 701.05(a)(6)
- TRUCK/TRAILER MOUNTED ATTENUATOR (TMA) (ROLL WITH MOVING OPERATION)

**TAPER RATES**

WORK ZONE SPEED (mph)	SHY LINE (ft.)	BARRIER INSIDE SHY LINE	BARRIER AT OR BEYOND SHY LINE
65	8.5	28:1	19:1
60	8	26:1	18:1
55	7	24:1	16:1
50	6.5	21:1	14:1
45	6	18:1	12:1
40	5	16:1	10:1
35	4.5	15:1	9:1
30	4	13:1	8:1

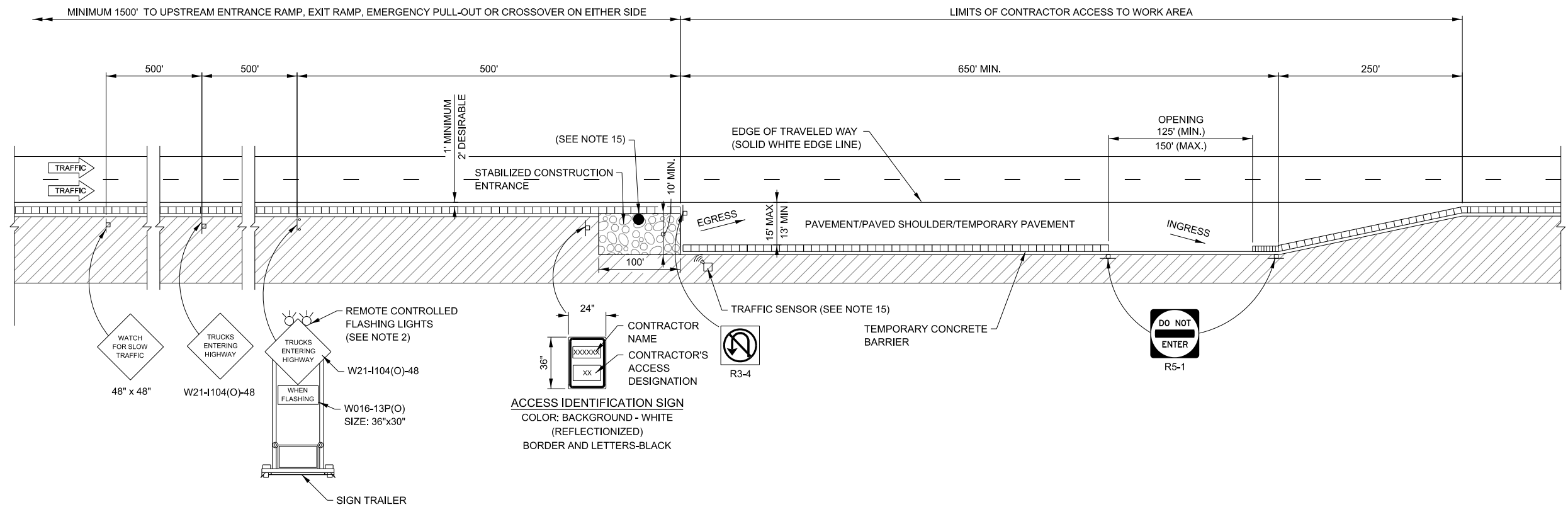
REVISIONS	
DATE	DESCRIPTION
03-01-2026	ADDED NEW NOTE 16 WITH CALLOUT. CLARIFIED LIMITS OF DIAGONALS FOR TYPE A, REVISED R-8-7 FOR TYPE C, AND REVISED WORK AREA HATCHING SHEET 3 OF 3.
03-01-2025	REDESIGNED CONSTRUCTION ENTRANCES

**Illinois Tollway**

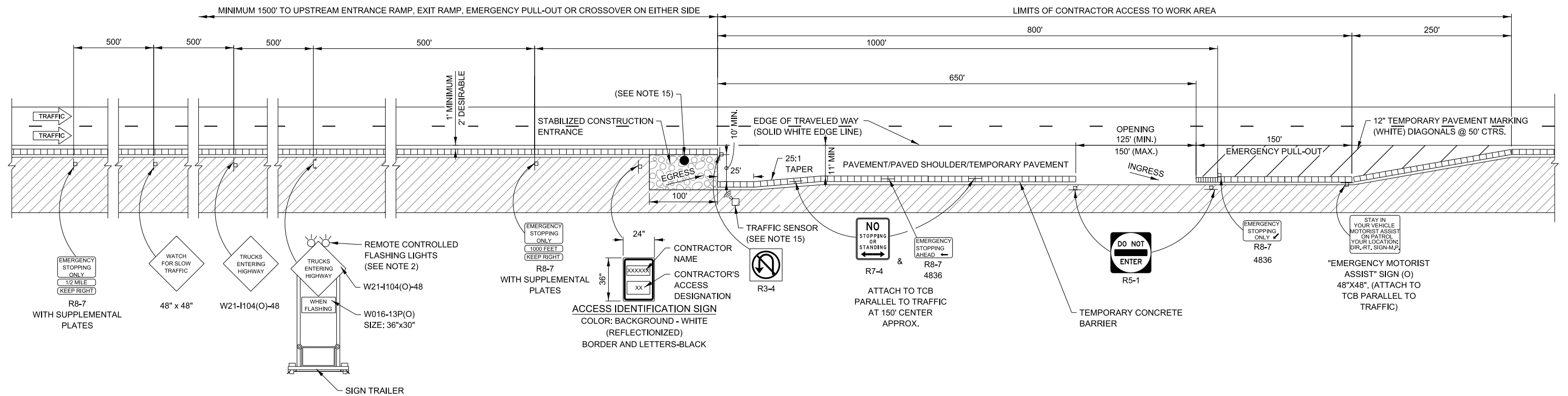
**CONTRACTOR ACCESS TO WORK AREA**

VERSION: 2026-03      STANDARD: E6-10      SHEET: 1 OF 3

APPROVED BY: *Manar Nashif*      DATE: 03/01/2026  
 CHIEF ENGINEERING OFFICER



**TYPE B : CONTRACTOR ACCESS TO WORK AREA WITH TRUCK ACCELERATION LANE**



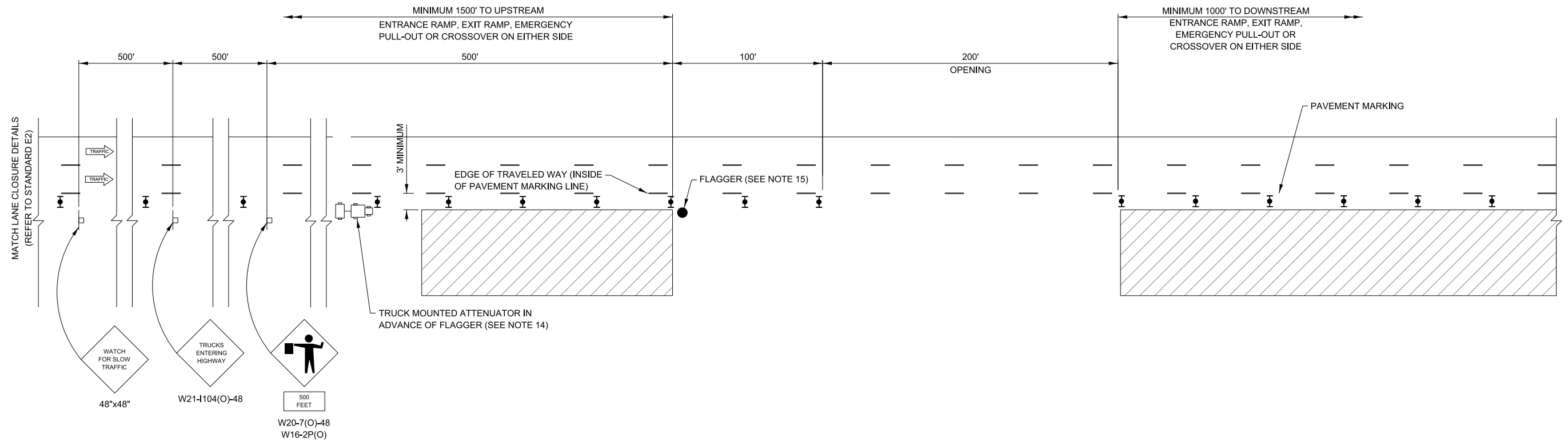
**TYPE C : CONTRACTOR ACCESS TO WORK AREA WITH TRUCK ACCELERATION LANE AND EMERGENCY PULL-OUT AREA**

APPROVED BY: *Manar Nashif*  
 CHIEF ENGINEERING OFFICER  
 DATE: 03/01/2026

**Illinois Tollway**

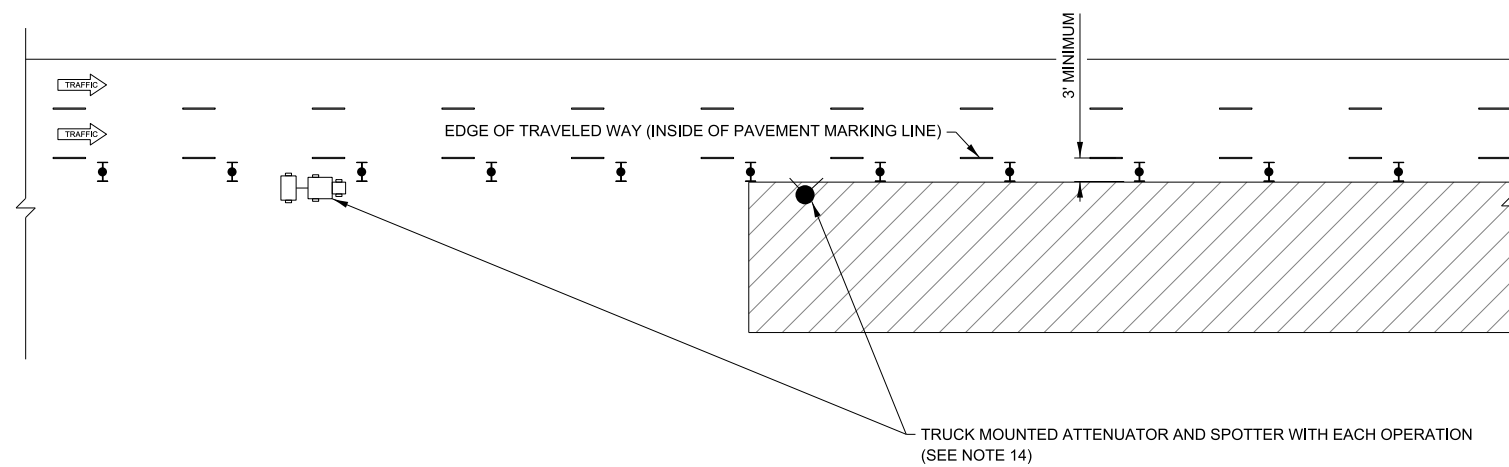
**CONTRACTOR ACCESS TO WORK AREA**

VERSION: 2026-03	STANDARD: E6-10	SHEET: 2 OF 3
---------------------	--------------------	------------------



**CONTRACTOR ACCESS TO WORK AREA WITHOUT TEMPORARY CONCRETE BARRIER**

- LEGEND**
- FLAGGER
  - SPOTTER
  - ▮ CONSTRUCTION SIGN ON SUPPORT PER ILLINOIS TOLLWAY STANDARD UNLESS NOTED
  - DIRECTION OF TRAFFIC FLOW
  - ▨ WORK AREA
  - ⊕ DRUM WITH LIGHT IF REQUIRED SEE ARTICLE 701.05(a)(6)
  - ▭ TRUCK/TRAILER MOUNTED ATTENUATOR (TMA) (ROLL WITH MOVING OPERATION)



**SPOTTER AND TMA AT WORK AREA**

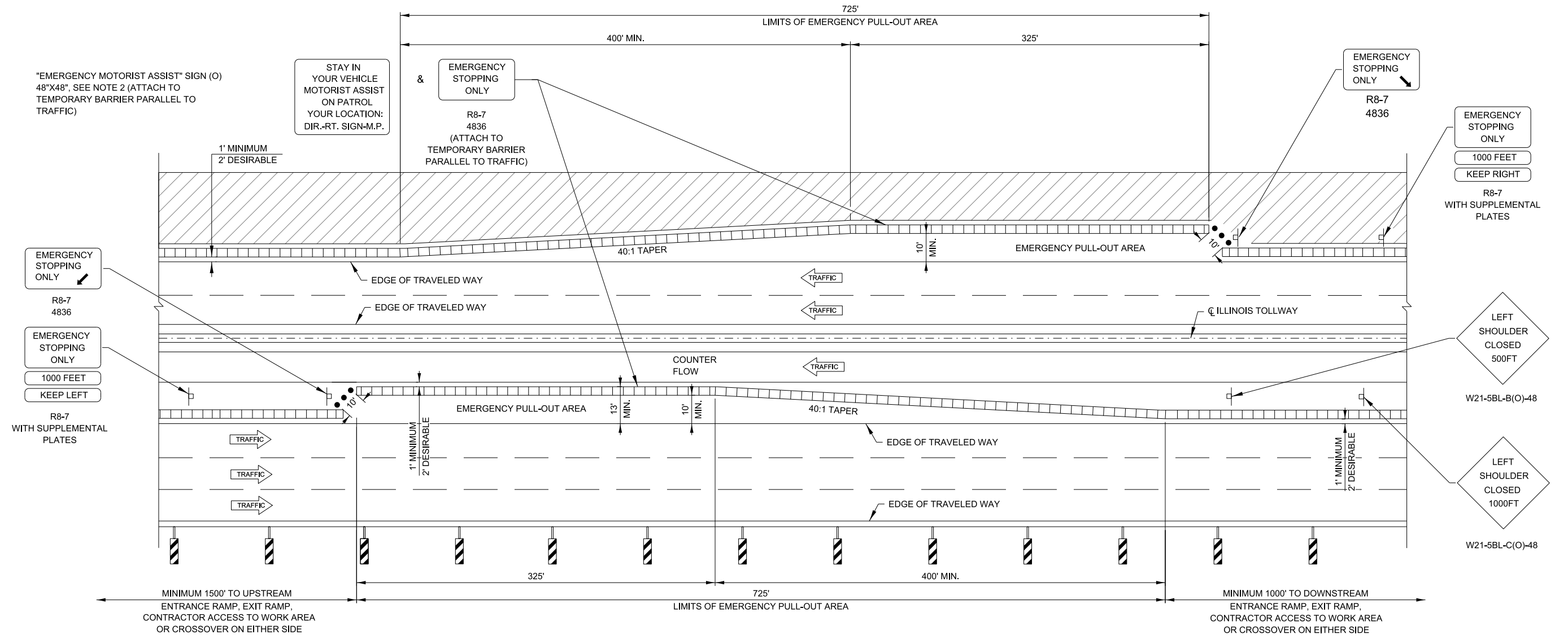
APPROVED BY: *Manar Nashif*  
CHIEF ENGINEERING OFFICER

DATE: 03/01/2026

**Illinois Tollway**

**CONTRACTOR ACCESS TO WORK AREA**

VERSION: 2026-03      STANDARD: E6-10      SHEET: 3 OF 3



**EMERGENCY PULL-OUT AREA**

**LEGEND**

- TEMPORARY CONCRETE BARRIER WITH BARRIER DELINEATORS ON TRAFFIC SIDE
- VERTICAL PANELS @ 100 FT CENTERS ALONG ROADWAY (TANGENT) AND 50 FT CENTERS ALONG TAPERS.
- WORK AREA
- FLEXIBLE DELINEATOR POSTS
- DIRECTION OF TRAFFIC FLOW
- CONSTRUCTION SIGN ON SUPPORT PER ILLINOIS TOLLWAY STANDARD UNLESS NOTED.

**NOTES:**

1. PULL-OUT AREA SPACED PER CONTRACT DOCUMENTS.
2. ENGINEER TO DETERMINE EMERGENCY ASSIST SIGN'S INFORMATION FOR DIRECTION - ROUTE SIGN - MILEPOST ONCE THE LOCATION HAS BEEN ACCEPTED.
3. A 1'-0" MINIMUM/2'-0" DESIRABLE SHY DISTANCE SHALL BE PROVIDED, MEASURED BETWEEN EDGE OF PAVEMENT LANE MARKING TO THE EDGE OF THE TRAFFIC CONTROL DEVICE.
4. FLEXIBLE DELINEATORS TO BE 48" IN HEIGHT ABOVE BASE, TUBULAR POSTS (ORANGE) WITH 360 DEGREES FULL VIEW TWO-4" FLORESCENT ORANGE REFLECTORIZED TAPE BANDS. FLEXIBLE DELINEATORS SHALL BE CAPABLE OF BENDING UNDER REPEATED IMPACTS AND RETURN TO AN UPRIGHT POSITION WITHOUT DAMAGE TO THE IMPACTING VEHICLE OR THE DELINEATORS. THE DELINEATOR'S BASE SHALL BE SECURELY MOUNTED TO THE ROADWAY SURFACE. THE POSTS SHALL BE REMOVABLE FROM THE BASES TO PERMIT REPLACEMENT OF DAMAGED UNITS AS REQUIRED.

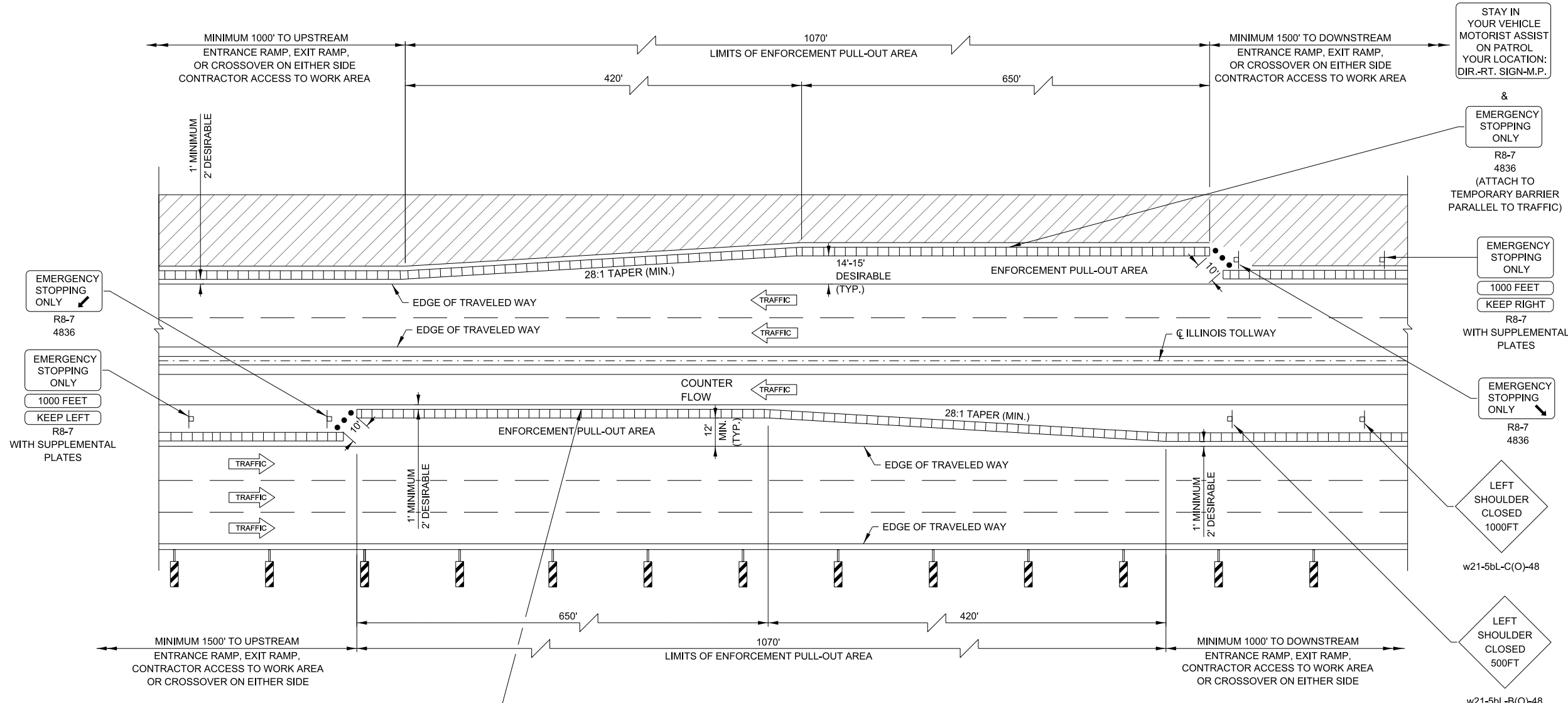
REVISIONS	
DATE	DESCRIPTION
03-01-2026	ADDED 'MIN.' TO TAPERED SECTION OF EMERGENCY PULL-OUT AREA.
03-01-2025	REDUCED WORK AREA BEHIND TCB
03-01-2020	REMOVED LIGHTS FROM VERTICAL PANELS
03-11-2015	REVISED NOTES

**PULL-OUT AREA**

VERSION: 2026-03      STANDARD: E7-07      SHEET: 1 OF 2

APPROVED BY: *Manan Nashif*      DATE: 03/01/2026  
 CHIEF ENGINEERING OFFICER

"EMERGENCY MOTORIST ASSIST" SIGN (O)  
48"x48", SEE NOTE 2 (ATTACH TO TEMPORARY  
BARRIER PARALLEL TO TRAFFIC)



EMERGENCY STOPPING ONLY  
R8-7  
4836

EMERGENCY STOPPING ONLY  
1000 FEET  
KEEP LEFT  
R8-7  
WITH SUPPLEMENTAL PLATES

STAY IN YOUR VEHICLE  
MOTORIST ASSIST  
ON PATROL  
YOUR LOCATION:  
DIR.-RT. SIGN-M.P.

&

EMERGENCY STOPPING ONLY  
R8-7  
4836  
(ATTACH TO  
TEMPORARY BARRIER  
PARALLEL TO TRAFFIC)

EMERGENCY STOPPING ONLY  
1000 FEET  
KEEP RIGHT  
R8-7  
WITH SUPPLEMENTAL PLATES

EMERGENCY STOPPING ONLY  
R8-7  
4836

LEFT SHOULDER CLOSED  
CLOSED  
1000FT  
w21-5bL-C(O)-48

LEFT SHOULDER CLOSED  
CLOSED  
500FT  
w21-5bL-B(O)-48

"EMERGENCY MOTORIST ASSIST" SIGN (O)  
48"x48", SEE NOTE 2 (ATTACH TO TEMPORARY  
BARRIER PARALLEL TO TRAFFIC)

STAY IN YOUR VEHICLE  
MOTORIST ASSIST  
ON PATROL  
YOUR LOCATION:  
DIR.-RT. SIGN-M.P.

EMERGENCY STOPPING ONLY  
R8-7  
4836  
(ATTACH TO  
TEMPORARY BARRIER  
PARALLEL TO TRAFFIC)

**ENFORCEMENT PULL-OUT AREA**

SEE SHEET 1 IN THIS  
SERIES FOR NOTES.

**LEGEND**

- TEMPORARY CONCRETE BARRIER WITH BARRIER DELINEATORS ON TRAFFIC SIDE
- VERTICAL PANELS @ 100 FT CENTERS ALONG ROADWAY (TANGENT) AND 50 FT CENTERS ALONG TAPERS.
- WORK AREA
- FLEXIBLE DELINEATOR POSTS
- DIRECTION OF TRAFFIC FLOW
- CONSTRUCTION SIGN ON SUPPORT PER ILLINOIS TOLLWAY STANDARD UNLESS NOTED.

APPROVED BY: *Manar Nashif*  
CHIEF ENGINEERING OFFICER

DATE: 03/01/2026

**PULL-OUT AREA**

VERSION: 2026-03      STANDARD: E7-07      SHEET: 2 OF 2