

PROFESSIONAL SERVICES BULLETIN 25-2

ADDENDUM No. 2

ADDENDUM No. 2 does not change the due date or time

STATEMENTS OF INTEREST (SOIs) are due by 4:30:00 p.m. (Central Time)

Due Date: June 27, 2025

Successful Firm(s) will be notified.

Overall results will be posted on the Illinois Chief Procurement Officer's eProcurement System at: <https://www.bidbuy.illinois.gov/>

Professional Services Bulletin

No. 25-2 Addendum 2

June 9, 2025

ILLINOIS TOLLWAY website: www.illinoistollway.com



Illinois Tollway
2700 Ogden Avenue, Downers Grove, IL 60515

ADDENDUM No. 2
REVISION DATE: June 9, 2025
PROFESSIONAL SERVICES BULLETIN No 25-2

Addendum No. 1 does not change the due date or time. Statements of Interest are due via the Trimble Unity Connect process: <https://app.e-builder.net/> to the Illinois State Toll Highway Authority, by 4:30:00 p.m. Central Time, June 27, 2025.

The following revisions are being made via Addendum No.2 to Professional Services Bulletin (PSB) No. 25-2. The bulletin is being reissued in its entirety with changes noted. If you downloaded the bulletin prior to the noted Addendum/Revision Date, you should incorporate the revisions or download and use a new copy of the bulletin.

ADDENDUM No. 2/ REVISION DATE: June 9, 2025

Pre-Proposal Presentation and Attendee List

Building for Success In-Road Electric Vehicle Charging Webinar and Attendee List

NEW TO THIS PSB

An optional Pre-Proposal Meeting will be held on June 6, 2025, at 9:00 a.m. (CT) via Microsoft Teams.

An optional webinar will be held on June 6, 2025, at 11:00 a.m. (CT) via Microsoft Teams to provide an overview of the Tollway's vision and outline the upcoming opportunity for work related to in-road electric vehicle charging, Item 1 on the PSB.

e-Builder is now Trimble Unity Construct If you are currently registered in e-Builder, your user ID will be active in Trimble Unity Construct.

TABLE OF CONTENTS

PART I: THE SCHEDULE

1.1	CONTACT INFORMATION	3R
1.2	OFFICIAL NOTICE	3R-4
1.3	ACCEPTANCE OF SCANNED SIGNATURES	4
1.4	PSB ITEM INDEX	5-6
1.5	PSB ITEM DETAILS	A-1 – A-10

PART II: CONTRACT CLAUSES AND REQUIREMENTS

2.1	CONSULTANT/SUBCONSULTANT CONFLICTS OF INTEREST WITHIN TOLLWAY PROJECTS	7
2.2	INSPECTOR GENERAL	8
2.3	FINANCIAL INFORMATION	8-9
2.4	ILLINOIS TOLLWAY'S CONTRACT PAYMENT POLICY	9
2.5	DISADVANTAGED BUSINESS ENTERPRISE (DBE) PARTICIPATION	9-11
2.6	PARTNERING FOR GROWTH PROGRAM GUIDELINES	11
2.7	STATE OF ILLINOIS VETERAN SMALL BUSINESS PARTICIPATION AND UTILIZATION PLAN	11-12
2.8	TEAMING AGREEMENT	12-13
2.9	MANUALS, PROCESSES AND GUIDELINES	13
2.10	PHASE II: DESIGN ENGINEERING SERVICES	13
2.11	PHASE III: CONSTRUCTION ENGINEERING SERVICES	13-14
2.12	CONSTRUCTION AND QUALITY ASSURANCE CONSULTANTS	14
2.13	QUALITY ASSURANCE PREQUALIFICATION CATEGORY	14
2.14	CLARIFICATION OF QUALITY CONTROL/QUALITY ASSURANCE REQUIREMENTS	14
2.15	CONSULTANT CONTRACT FORMS	15
2.16	SELF-PERFORMANCE	15

PART III: REPRESENTATIONS AND INSTRUCTIONS

3.1	SELECTION CRITERIA	15
3.2	SCHEDULE FOR CONSULTANT SELECTION	16
3.3	GUIDELINES FOR SUBMITTING SOI	16-18
3.4	SUBMITTAL INSTRUCTIONS	18-23
3.5	DISCLOSURES AND CERTIFICATIONS	24
3.6	PROTEST PROCEDURE	25
3.7	USEFUL LINKS	26
3.8	ILLINOIS EPROCUREMENT BIDBUY NOTICE	26
3.9	INFORMATION ON ACCESSING THE ILLINOIS TOLLWAY WEBSITE	27
3.10	FUTURE PROFESSIONAL SERVICES BULLETIN NOTIFICATIONS	28
3.11	RESERVED	28
3.12	EXCHANGES WITH FIRMS AFTER SOI SUBMISSION	29

PART I: THE SCHEDULE

1.1 CONTACT INFORMATION

Illinois State Toll Highway Authority (ISTHA)
2700 Ogden Avenue
Downers Grove, IL 60515

PSB 25-2 Coordinator: csstaff@getipass.com

PSB 25-2 Tech Support: wbpm@getipass.com

PSB 25-2 Trimble Unity Construct Training: wbpm@getipass.com

-

1.2 25-2 OFFICIAL NOTICE

This Professional Services Bulletin 25-2 (PSB 25-2) is the official notice of needed professional services for the Illinois State Toll Highway Authority ("Illinois Tollway", "Tollway"), as authorized by the Architectural, Engineering, and Land Surveying Qualifications Based Selection Act, (30 ILCS 535/1, *et seq.*). This PSB contains information pertaining to the advertisement for Statements of Interest (SOI) and is part of the Chief Procurement Officer eProcurement System for the Illinois State Toll Highway Authority. PSB **25-2**, including all Exhibits and forms, is available on the Illinois Tollway's website at: <https://www.illinoistollway.com/doing-business/construction-engineering/bids-bulletins-awards>. Additional information is also posted on the Illinois Chief Procurement Officer's eProcurement System at: <https://www.bidbuy.illinois.gov/>. For instructions on accessing the Illinois Tollway website, PSB, and Exhibits please refer to the Table of Contents. Instructions on receiving procurement opportunities are included in the "Illinois eProcurement BidBuy Notice" section of this PSB.

1.2.1 PSB 25-2 SUMMARY

Information for the Trimble Unity Construct process for PSB **25-2** can be found in the Public Folder at: <https://app.e-builder.net/public/publicLanding.aspx?QS=8b550cb238ba4d768a53aa87d3c9cdcd>

You will need the following before you can submit an SOI in Trimble Unity Construct:

- Trimble Unity Construct resources, including PSB SOI user manual, FAQ file, and videos (see Public Folder link above)
- Webinar Training (see Section 3.7 Useful Links for training webinar registration link)
- Trimble Unity Construct Login ID (see Section 3.4 Submittal Instructions)
- Firm Code Name (see Section 3.4 Submittal Instructions)

An optional pre-proposal meeting will be held on Friday, June 6, 2025, at 9:00 a.m. (CT) Via Microsoft Teams.

Register here: <https://events.gcc.teams.microsoft.com/event/d43292dd-62da-4dd8-9597-e940f8eac119@48475f88-04d3-4aa6-ae94-21dcfec788aa>

An optional webinar related to Item 1 will be held on Friday, June 6, 2025, at 11:00 a.m. (CT).

Register here: <https://events.gcc.teams.microsoft.com/event/d11842a8-2630-413c-8f57-fd64723bbcf3@48475f88-04d3-4aa6-ae94-21dcfec788aa>

All questions related to this PSB must be submitted electronically through the Trimble Unity Construct SOI Mailbox at [PSB 25-2.01 Questions and RFIs@docs.e-builder.net](mailto:PSB_25-2.01_Questions_and_RFIs@docs.e-builder.net) no later than **June 16, 2025 at 4:30:00 pm (CT)**. The subject line should read: PSB 25-2 Question. Answers will be addressed via an Addendum published on the Tollway website and the Illinois eProcurement site, BidBuy. For Trimble Unity Construct technical questions, please contact the Trimble Unity Construct PSB Tech Support: wbpm@getipass.com.

This is not an invitation for bids. Consultants properly prequalified for the projects listed herein may indicate their desire to be considered for selection by submitting an SOI to the Illinois Tollway via the Trimble Unity Construct PSB **25-2** SOI process.

The Illinois Tollway follows the Qualifications Based Selection (QBS) process mandated by Illinois statute (30 ILCS 535): Architectural, Engineering, and Land Surveying Qualifications Based Selection Act for selecting qualified Consultants under this PSB.

1.3 ACCEPTANCE OF SCANNED SIGNATURES

Unless otherwise specified, the parties agree that proposals, contracts, certifications and disclosures, and other contract related documents to be entered into in connection with the resulting contract will be considered signed when the signature of a party is delivered by scanned image (e.g. .pdf or .tiff file extension name) as an attachment to the Trimble Unity Construct PSB SOI process. Such scanned signature will be treated in all respects as having the same effect as an original signature.

1.4 PROFESSIONAL SERVICES BULLETIN NO. 25-2 ITEM INDEX

No.	Project No. / County	Description	Page No.
1	I-25-2018 Systemwide	Systemwide In-Road Electric Vehicle Charging, Design Services Upon Request. On-Call and as-needed Phase II Engineering Services.	A-1–A-2
2	RR-25-4992 Systemwide	Systemwide, Design Services Upon Request. On-call, and as-needed Phase II Engineering Services.	A-3
3	RR-25-4993 Systemwide	Systemwide, Intelligent Transportation Systems (ITS) Design Services Upon Request. On-call, and as-needed Phase II Engineering Services.	A-4
4	I-25-4769 DuPage and Cook Counties	Elgin O'Hare Western Access (I-490), Roadway Construction, I-294 to I-90, Foster Avenue (MP 3.1) to Devon Avenue (MP 4.3), Construction Management Services	A-5
5	I-25-4770 DuPage and Cook Counties	Elgin O'Hare Western Access (I-490), Roadway and Bridge Construction, I-294 to I-90, Taft Avenue (MP 0.9) to Foster Avenue (MP 3.1), Construction Management Services	A-6–A-7
6	RR-25-2019 Systemwide	Systemwide Bridge Rehabilitation, Construction Management Services	A-8–A-9
7	RR-25-2020 Whiteside and Lee Counties	Reagan Memorial Tollway (I-88), Bridge Rehabilitation, Howland Creek (MP 44.5) to Steward Creek (MP 74.3), Construction Management Services	A-10

1.5 PSB ITEM DETAILS

1.5.1 Item 1: I-25-2018, Systemwide In-Road Electric Vehicle Charging, Design Services Upon Request

This project has a 24% D/M/WBE participation goal and 3% VOSB participation goal.

Phase I and Phase II engineering services are required for performing engineering studies, preparing contract drawings, specifications, and estimates and providing other technical services as directed by the Illinois Tollway related to in-road electric vehicle charging installation on the Tollway System. Tasks may include, but not be limited to, the following:

- Phase I engineering services for assessing the functionality and operation of in-road electric vehicle charging at select locations on the Tollway system, evaluating current and future Tollway needs for in-road electric vehicle charging and coordinating with utilities and external agencies.
- Engineering services for development of an implementation strategy.
- Phase II engineering services for installation of in-road electric vehicle charging at select locations as determined through completion of Phase I engineering services. Phase II engineering services will include the development of performance-based specifications for operation of the in-road electric vehicle charging equipment and integration into existing fiber network.
- Support the Tollway in conducting industry outreach and training.
- Phase III support during construction, including testing and evaluation of the in-road electric vehicle charging system.
- On call and as-needed work related to the Tollway System.

The upper limit of compensation will be set at \$3,500,000 to be authorized for use as needed.

The Prime Consultant must be prequalified by IDOT in the following categories:

Highways (Freeways)
Special Services (Electrical Engineering)
Special Studies (Feasibility)
Special Services (Surveying)

The Tollway will allow a Prime Consultant to meet the prequalification for Special Services (Feasibility) and Special Services (Surveying) through a subconsultant.

In addition, the prime firm must demonstrate a minimum of three (3) years of transportation electrification planning or design experience including one (1) year with dynamic wireless power transfer as related to transportation projects.

Key personnel listed on Exhibit A for this project must include:

- Project Manager
- Project Engineer who is responsible for and directly involved in the development of the contract documents (must be an Illinois Licensed Professional Engineer)
- Roadway designer, who will be responsible for roadway design related issues (must be an Illinois Licensed Professional Engineer)
- Electrical designer, who will be responsible for electrical design related issues (must be an Illinois Licensed Professional Engineer)
- QC/QA reviewer of all milestone submittals, who must be an Illinois Licensed Professional Engineer for roadway or an Illinois Licensed Professional Engineer for electrical elements

Schedule: This project is scheduled to start in 2025. The substantial completion date for this project will be approximately 60 months after authorization to proceed.

The Consultant must comply with the current edition of the Illinois Tollway's Computer Aided Design and Drafting (CADD) Standards Manual available on the Illinois Tollway's website. This project will be managed through the Tollway's web-based project management system. The Consultant will be required to participate in these procedures and will receive training on the system. The Tollway will furnish the Consultant with guidelines for the

Consultant's Quality Program (CQP). The CQP is due fourteen (14) days after Notice to Proceed. The Consultant who is selected for this project will be notified and scheduled to attend a scope briefing with the Illinois Tollway.

1.5.2 Item 2: RR-25-4992, Systemwide, Design Services Upon Request.

This project has a 21% D/M/WBE participation goal and 3% VOSB participation goal.

Phase II engineering services are required for preparing contract plans, performing engineering studies and providing other technical services as directed by the Illinois Tollway. Tasks will include design for projects identified by the Tollway which may include, but not be limited to, the following:

1. Pavement repairs
2. Bridge repairs
3. Drainage improvements
4. Phase III support during construction
5. On call and as-needed work on the Tollway system

The upper limit of compensation will be set at \$3,000,000 to be authorized for use as needed.

The Prime Consultant must be prequalified by IDOT in the following categories:

Highways (Freeways)
Structures (Highway Bridges: Typical)

The Tollway will allow a Prime Consultant to meet the prequalification for Structures (Highway Bridges: Typical) through a subconsultant.

Key personnel listed on Exhibit A for this project must include:

- Project Manager (must be an Illinois Licensed Professional Engineer)
- Project Engineer, who is directly involved in the development of the contract documents (must be an Illinois Licensed Professional Engineer)
- Roadway designer, who will be responsible for roadway design related issues (must be an Illinois Licensed Professional Engineer)
- Structural designer, who will be responsible for structural design related issues (must be an Illinois Licensed Structural Engineer)
- QC/QA reviewer of all milestone submittals, who must be an Illinois Licensed Professional Engineer for roadway elements, or an Illinois Licensed Structural Engineer for structural elements

Schedule: This project is scheduled to start in 2025. The substantial completion date for this project will be approximately 60 months after authorization to proceed.

The Consultant must comply with the current edition of the Illinois Tollway's Computer Aided Design and Drafting (CADD) Standards Manual available on the Illinois Tollway's website. This project will be managed through the Tollway's web-based project management system. The Consultant will be required to participate in these procedures and will receive training on the system. The Tollway will furnish the Consultant with guidelines for the Consultant's Quality Program (CQP). The CQP is due fourteen (14) days after Notice to Proceed. The Consultant who is selected for this project will be notified and scheduled to attend a scope briefing with the Illinois Tollway.

1.5.3 Item 3: RR-25-4993, Systemwide, Intelligent Transportation Systems (ITS) Design Services Upon Request.
On-call, and as-needed Phase II Engineering Services.

This project has a 29% D/M/WBE participation goal and 3% VOSB participation goal.

Phase II engineering services are required for preparing contract plans and performing engineering studies and providing other technical services as directed by the Illinois Tollway. Tasks will include design for ITS projects which may include, but not be limited to, the following:

1. CCTV camera installation and replacement
2. Road Weather Information System (RWIS) repairs and replacement
3. Weigh-in-Motion (WIM) repairs and replacement
4. Phase III support during construction
5. On call and as-needed work related to the Tollway System.

The upper limit of compensation will be set at \$3,000,000.00 to be authorized for use as needed.

The prime firm must be prequalified by IDOT in the following categories:

Highways (Freeway)
Special Services (Electrical Engineering)

The Tollway will allow a Prime consultant to meet the prequalification for Highways (Freeway) through a subconsultant.

In addition, the prime firm, or their subconsultant, must demonstrate a minimum of five (5) years of experience in Intelligent Transportation Systems (ITS) as related to transportation projects.

Key personnel listed on Exhibit A for this project must include:

- Project Manager (must be an Illinois Licensed Professional Engineer)
- Project Engineer, who is directly involved in the development of the contract documents (must be an Illinois Licensed Professional Engineer)
- Roadway designer, who will be responsible for roadway design related issues (must be an Illinois Licensed Professional Engineer)
- Electrical designer, who will be responsible for electrical design related issues (must be an Illinois Licensed Professional Engineer)
- QC/QA reviewer of all milestone submittals (must be an Illinois Licensed Professional Engineer)

Schedule: This project is scheduled to start in 2025. The substantial completion date for this project will be approximately 60 months after authorization to proceed.

The Consultant must comply with the current edition of the Illinois Tollway's Computer Aided Design and Drafting (CADD) Standards Manual available on the Illinois Tollway's website. This project will be managed through the Tollway's web-based project management system. The Consultant will be required to participate in these procedures and will receive training on the system. The Tollway will furnish the Consultant with guidelines for the Consultant's Quality Program (CQP). The CQP is due fourteen (14) days after Notice to Proceed. The Consultant who is selected for this project will be notified and scheduled to attend a scope briefing with the Illinois Tollway.

Item 4: I-25-4769, Elgin O'Hare Western Access (I-490), Roadway Construction, I-294 to I-90, Foster Avenue (MP 3.1) to Devon Avenue (MP 4.3), Construction Management Services

This project has a 33% D/M/WBE participation goal and 3% VOSB participation goal.

Phase III engineering services are required for the construction inspection and supervision on a portion of I-490 from I-294 to I-90 in Cook and DuPage Counties. This project is anticipated from Foster Avenue to Devon Avenue in Cook and DuPage Counties. The Consultant will be required to have experience with construction adjacent to O'Hare International Airport and with Chicago Department of Aviation (CDA) and Federal Aviation Administration (FAA) procedures.

Coordination as well as proactive and continuous communication with all project stakeholders is required.

The work generally encompasses roadway construction from I-490 Mile Post 3.1 to Milepost 4.3 and includes construction of I-490 pavement from Irving Park Road to Devon Avenue, construction of performance-based retaining walls and other associated work.

The Consultant will perform on-site inspection, review layout of contract work, provide geotechnical inspection and testing, prepare records, maintain documentation, submit pay estimates and perform any other duties requiring the services of an engineer to complete this project on a timely basis and in accordance with Tollway specifications. The Consultant may be required to review pre-final contract documents submitted to the Tollway. The Consultant must complete and submit final measurements, calculations and final contract documents to the Tollway no later than six (6) weeks after completion of punchlist work for the project.

Construction Estimate: Category B

Firms must be prequalified by IDOT in the following category:

Special Services (Construction Inspection)

Key personnel listed on Exhibit A for this project must include:

- Project Manager (must be an Illinois Licensed Professional Engineer)
- Resident Engineer
- Materials Coordinator
- Document Technician (The person actively performing the documentation on the project must possess a current IDOT Construction Documentation certificate. Include the Documentation Certificate Number for IDOT.)
- Materials QA Technician
- Scheduler

For definitions and requirements please see the Illinois Tollway Construction Manager's manual found on the Illinois Tollway website at:

<https://www.illinoistollway.com/doing-business/construction-engineering/manuals-processes-guidelines#Manuals>

Schedule: This project is scheduled to start in 2026. The substantial completion date for this project will be approximately 24 months after authorization to proceed.

The Consultant must comply with the current edition of the Illinois Tollway's Computer Aided Design and Drafting (CADD) Standards Manual available on the Illinois Tollway's website. This project will be managed through the Tollway's web-based project management system. The Consultant will be required to participate in these procedures and will receive training on the system. The Tollway will furnish the Consultant with guidelines for the Consultant's Quality Program (CQP). The CQP is due fourteen (14) days after Notice to Proceed. The Consultant who is selected for this project will be notified and scheduled to attend a scope briefing with the Illinois Tollway.

1.5.5 Item 5: I-25-4770, Elgin O'Hare Western Access (I-490), Roadway and Bridge Construction, I-294 to I-90, Taft Avenue (MP 0.9) to Foster Avenue (MP 3.1), Construction Management Services

This project has a 32% D/M/WBE participation goal and 3% VOSB participation goal.

Phase III engineering services are required for the construction inspection and supervision on a portion of I-490 between I-294 to I-90 in Cook and DuPage Counties. The Consultant will be required to have experience with construction adjacent to O'Hare International Airport and with Chicago Department of Aviation (CDA) and Federal Aviation Administration (FAA) procedures.

Coordination as well as proactive and continuous communication with all project stakeholders is required.

The work generally encompasses roadway and bridge construction from I-490 Milepost 0.9 to Milepost 3.1 from Taft Avenue to Foster Avenue, generally located along the existing Irving Park Road corridor. The following structures are included in this project:

- Northbound and southbound I-490 Bridges over IL 19 (Irving Park Road)
- Northbound and southbound I-490 Bridges over Ramp Z1 (exit ramp from southbound I-490 to Irving Park Road)
- Four retaining walls

The Consultant will perform on-site inspection, review layout of contract work, provide geotechnical inspection and testing, prepare records, maintain documentation, submit pay estimates and perform any other duties requiring the services of an engineer to complete this project on a timely basis and in accordance with Tollway specifications. The Consultant may be required to review pre-final contract documents submitted to the Tollway. The Consultant must complete and submit final measurements, calculations and final contract documents to the Tollway no later than six (6) weeks after completion of punchlist work for the project.

Phase II design engineering services support during construction as outlined in Section 2.10 will not be provided under a separate Tollway contract.

Construction Estimate: Category F

Firms must be prequalified by IDOT in the following category:

**Special Services (Construction Inspection)
Structures (Highway Bridges: Advanced Typical)**

The Tollway will allow a Prime Consultant to meet the prequalification for Structures (Highway Bridges: Advanced Typical) through a subconsultant.

Key personnel listed on Exhibit A for this project must include:

- Project Manager (must be an Illinois Licensed Professional Engineer)
- Resident Engineer
- Materials Coordinator
- Document Technician (The person actively performing the documentation on the project must possess a current IDOT Construction Documentation certificate. Include the Documentation Certificate Number for IDOT.)
- Materials QA Technician
- Scheduler

For definitions and requirements please see the Illinois Tollway Construction Manager's manual found on the Illinois Tollway website at: <https://www.illinoistollway.com/doing-business/construction-engineering/manuals-processes-guidelines#Manuals>

Schedule: This project is scheduled to start in 2026. The substantial completion date for this project will be approximately 24 months after authorization to proceed.

The Consultant must comply with the current edition of the Illinois Tollway's Computer Aided Design and Drafting (CADD) Standards Manual available on the Illinois Tollway's website. This project will be managed through the Tollway's web-based project

management system. The Consultant will be required to participate in these procedures and will receive training on the system. The Tollway will furnish the Consultant with guidelines for the Consultant's Quality Program (CQP). The CQP is due fourteen (14) days after Notice to Proceed. The Consultant who is selected for this project will be notified and scheduled to attend a scope briefing with the Illinois Tollway.

1.5.6 Item 6: RR-25-2019, Systemwide Bridge Rehabilitation, Construction Management Services

This project has a 32% D/M/WBE participation goal and 3% VOSB participation goal.

Phase III engineering services are required for the construction inspection and supervision for rehabilitation of various mainline and crossroad bridges at select locations on the Tollway system.

There are two construction contracts anticipated to be advertised. The work generally encompasses bridge repair and rehabilitation and is anticipated to include:

- Rehabilitation work at one mainline and eight crossroad bridges on the Tri-State Tollway (I-94/I-294), Veterans Memorial Tollway (I-355), and Reagan Memorial Tollway (I-88).
- Maintenance of traffic, including along other roadways requiring coordination with local agencies
- All other appurtenant and miscellaneous items

The following crossroad structures are anticipated to be included in this project:

- Sanders Road (Bridges 332 & 333)
- 83rd Street (Bridge 1471)
- Raymond Drive (Bridge 827)
- Washington Street (Bridge 833)
- Meyers Road (Bridge 851)
- Midwest Road (Bridge 853)
- Deerfield Road (Bridge 360)

The following mainline structures are anticipated to be included in this project:

- Deerfield Road Ramp F (Bridge 449)

The Consultant will perform on-site inspection, review layout of contract work, provide geotechnical inspection and testing, prepare records, maintain documentation, submit pay estimates and perform any other duties requiring the services of an engineer to complete this project on a timely basis and in accordance with Tollway specifications. The Consultant may be required to review pre-final contract documents submitted to the Tollway. The Consultant must complete and submit final measurements, calculations and final contract documents to the Tollway no later than six (6) weeks after completion of punchlist work for the project.

Construction Estimate: Category A

Firms must be prequalified by IDOT in the following categories:

**Special Services (Construction Inspection)
Structures (Highway: Typical)**

The Tollway will allow a Prime Consultant to meet the prequalification category requirement for Structures (Highway: Typical) through a subconsultant.

Key personnel listed on Exhibit A for this project must include:

- Project Manager (must be an Illinois Licensed Professional Engineer)
- Resident Engineer
- Materials Coordinator
- Document Technician (The person actively performing the documentation on the project must possess a current IDOT Construction Documentation certificate. Include the Documentation Certificate Number for IDOT.)
- Materials QA Technician

For definitions and requirements please see the Illinois Tollway Construction Manager's manual found on the Illinois Tollway website at:

<https://www.illinoistollway.com/doing-business/construction-engineering/manuals-processes-guidelines#Manuals>

Schedule: This project is scheduled to start in 2026. The substantial completion date for this project will be

approximately 18 months after authorization to proceed.

The Consultant must comply with the current edition of the Illinois Tollway's Computer Aided Design and Drafting (CADD) Standards Manual available on the Illinois Tollway's website. This project will be managed through the Tollway's web-based project management system. The Consultant will be required to participate in these procedures and will receive training on the system. The Tollway will furnish the Consultant with guidelines for the Consultant's Quality Program (CQP). The CQP is due fourteen (14) days after Notice to Proceed. The Consultant who is selected for this project will be notified and scheduled to attend a scope briefing with the Illinois Tollway.

1.5.7 Item 7: RR-25-2020, Reagan Memorial Tollway (I-88), Bridge Rehabilitation, Howland Creek (MP 44.5) to Steward Creek (MP 74.3), Construction Management Services

This project has a 32% D/M/WBE participation goal and 3% VOSB participation goal.

Phase III engineering services are required for the construction inspection and supervision for superstructure replacement and rehabilitation of various mainline and crossroad bridges along the Reagan Memorial Tollway (I-88) between Howland Creek and Steward Creek in Whiteside and Lee Counties, Illinois.

There are two construction contracts anticipated to be advertised. The work generally encompasses bridge repair and rehabilitation and is anticipated to include the following:

- Superstructure replacement at 2 mainline bridges
- Rehabilitation work at 12 mainline and 21 crossroad bridges
- Maintenance of traffic, including along other roadways requiring coordination with local agencies
- All other appurtenant and miscellaneous items

The Consultant will perform on-site inspection, review layout of contract work, provide geotechnical inspection and testing, prepare records, maintain documentation, submit pay estimates and perform any other duties requiring the services of an engineer to complete this project on a timely basis and in accordance with Tollway specifications. The Consultant may be required to review pre-final contract documents submitted to the Tollway. The Consultant must complete and submit final measurements, calculations and final contract documents to the Tollway no later than six (6) weeks after completion of punchlist work for the project.

Construction Estimate: Category B

Firms must be prequalified by IDOT in the following categories:

**Special Services (Construction Inspection)
Structures (Highway: Typical)**

The Tollway will allow a Prime Consultant to meet the prequalification category requirement for Structures (Highway: Typical) through a subconsultant.

Key personnel listed on Exhibit A for this project must include:

- Project Manager (must be an Illinois Licensed Professional Engineer).
- Resident Engineer
- Materials Coordinator
- Document Technician (The person actively performing the documentation on the project must possess a current IDOT Construction Documentation certificate. Include the Documentation Certificate Number for IDOT.)
- Materials QA Technician

For definitions and requirements please see the Illinois Tollway Construction Manager's manual found on the Illinois Tollway website at:

<https://www.illinoistollway.com/doing-business/construction-engineering/manuals-processes-guidelines#Manuals>

Schedule: This project is scheduled to start in 2026. The substantial completion date for this project will be approximately 18 months after authorization to proceed.

The Consultant must comply with the current edition of the Illinois Tollway's Computer Aided Design and Drafting (CADD) Standards Manual available on the Illinois Tollway's website. This project will be managed through the Tollway's web-based project management system. The Consultant will be required to participate in these procedures and will receive training on the system. The Tollway will furnish the Consultant with guidelines for the Consultant's Quality Program (CQP). The CQP is due fourteen (14) days after Notice to Proceed. The Consultant who is selected for this project will be notified and scheduled to attend a scope briefing with the Illinois Tollway.

PART II: CONTRACT CLAUSES AND REQUIREMENTS

2.1 CONSULTANT /SUBCONSULTANT CONFLICTS OF INTEREST WITHIN TOLLWAY PROJECTS

Professional engineering services performed under contracts with the Illinois Tollway shall be performed in accordance with the highest standards of professional behavior and highest principles of ethical conduct. Such services must be provided with honesty, impartiality, fairness and equity and must be dedicated to the protection of public health, safety and welfare.

Prime Consultants submitting a Statement of Interest (SOI) shall disclose any known or potential conflicts of interest the Prime Consultants may have.

The selected Prime Consultant shall be required to submit a Consultant Quality Program (CQP) to the Illinois Tollway, which shall be subject to approval by the Illinois Tollway. As part of the CQP, Prime Consultants shall identify any known or potential conflicts of interest, including any known or potential conflicts of interest identified by any of their Subconsultants. The CQP also shall outline the plan for monitoring known conflicts and identifying potential conflicts through the duration of the contract, as well as describe, in detail, procedures relative to ethical screens and other procedures for mitigating conflicts. If additional conflicts of interest or potential conflicts of interest are identified during the administration of the contract, the Prime Consultant will be required to submit an updated CQP.

Periodically, the Illinois Tollway solicits Professional Services for foundational contracts, which include the Program Management Office (PMO), Consulting Engineer (CE), and Traffic Engineer (TE) contracts. The overarching engineering services provided pursuant to foundational contracts involve all or the majority of all other Illinois Tollway Professional Services contracts, and the foregoing provisions of this Section 2.1 are fully applicable to the PMO, CE and TE contracts.

Foundational contracts prohibit the PMO, CE and TE from performing new services for the Illinois Tollway during the pendency of the respective PMO, CE, or TE contract (including extensions). "New services" as used herein includes, but is not limited to, work or services awarded to a person or entity not affiliated with the PMO, CE, or TE that, subsequent to the award of the PMO, CE, or TE contract, is acquired, becomes controlled by or otherwise becomes affiliated with the PMO, CE, or TE. The PMO, CE, and TE are required to notify the Illinois Tollway, in advance, of any such acquisition, assumption of control or affiliation.

Notwithstanding the provisions of the CQP or any other provisions of this Section 2.1, the Illinois Tollway reserves the right to assess and require appropriate corrective action, as determined by the Illinois Tollway, relative to any conflict or potential conflict issues involving a professional firm, professional individual, PMO, CE, or TE. Relative to conflicts and potential conflicts, Prime Consultants must be responsive to the Illinois Tollway so that appropriate steps can be taken to mitigate any such circumstances.

Consistent with the foregoing, professional firms should conduct their operations using common sense and professional judgment. Professional firms should not place their firms in inappropriate situations or create any unfair advantage for their firms.

This notice is not intended to address any potential conflicts of interest ruled upon by the Chief Procurement Officer and/or the Procurement Policy Board under the Illinois Procurement Code (30 ILCS 500/1, et seq.). Violations of this Section may result in termination of contracts for cause or the Illinois Tollway declining to award work, projects or contracts.

2.2 INSPECTOR GENERAL

The Vendor hereby acknowledges that pursuant to Section 8.5 of the Toll Highway Act (605 ILCS 10/8.5) the Inspector General of the Illinois State Toll Highway Authority (“OIG”) has the authority to conduct investigations into certain matters including but not limited to allegations of fraud, waste and abuse, and to conduct reviews. The Vendor agrees that it will fully cooperate in any OIG investigation or review and shall not bill the Illinois Tollway for such time. Cooperation includes, but is not limited to, providing access to all information and documentation related to the goods/services described in any Agreement entered into in connection with this PSB, and disclosing and making available all personnel involved or connected with these goods/services or having knowledge of these goods/services. All Prime Consultants must inform Subconsultants of this provision and their duty to similarly comply and cooperate with any OIG investigation or review.

2.3 FINANCIAL INFORMATION

2.3.1 DIRECT LABOR MULTIPLIER

The Direct Labor Multiplier to be used on projects advertised in the PSB is as follows:

Phase I and II (Studies, Design, and Survey)	2.8
Phase III (Construction Management)	2.8
Project Staff at Illinois Tollway Facilities	2.5

- The 2.5 multiplier applies to contracts with personnel permanently assigned to an Illinois Tollway facility, such as the Central Administration Building (CA). The 2.5 multiplier does not pertain to personnel assigned to construction field offices for Phase III (Construction Management).

The Direct Labor Multiplier for specialty engineering services, such as Aerial Mapping and LiDAR, will be based upon the firm’s current overhead determined during initial contract negotiations between Tollway and Consultant.

2.3.2 OTHER CONTRACTING METHODS

The Illinois Tollway, in its sole discretion, may consider, when it is in the best interest of the Illinois Tollway, other payment methodologies in lieu of the Direct Labor Multiplier. Other considerations include “flat rate” or “lump sum” methodology that would be further defined at the time of negotiations between Tollway and Consultant. Other payment methodologies could negate or alter section 2.3.1 Direct Labor Multiplier.

2.3.3 ESTIMATED CONSTRUCTION COST OF PROJECTS

The estimated construction cost of each project is presented in the following categories or may be specific to a project detail. This is to assist the Vendor in determining the relative size of the project. The construction cost category will be included in each Item. The categories are:

CATEGORY	ESTIMATED CONSTRUCTION COSTS
A	\$0M - \$ 25M
B	\$ 25M - \$ 50M
C	\$ 50M - \$ 75M
D	\$ 75M - \$ 100M
E	\$ 100M - \$150M
F	\$150M-\$200M
G	>\$200M

2.3.4 ALLOWABLE DIRECT COSTS

The Allowable Direct Cost and Allowable Direct Cost –Construction Inspection lists are available on the Illinois Tollway's website at:

<https://www.illinoistollway.com/doing-business/construction-engineering/forms>

The Illinois Tollway will allow the Vendor to negotiate their Direct costs and bill as a lump sum on the contract.

2.4 ILLINOIS TOLLWAY'S CONTRACT PAYMENT POLICY

The Illinois Tollway will not issue payments under contracts for costs incurred during the preceding calendar year if any invoice for that work is received after February 28th of the subsequent fiscal year. This policy enables the Illinois Tollway to close its financial books both on time and accurately. To meet the requirements of Generally Accepted Accounting Principles and those of the Illinois Auditor General and external auditors, the Illinois Tollway must account for all of its expenditures for a given calendar year before the end of the subsequent February. This policy includes payment of any "re-bill" issues that may arise. The Illinois Tollway is unable to make any payments for work in a given calendar year if it has not been properly invoiced to the Illinois Tollway by February 28th of the following year.

2.5 DISADVANTAGED BUSINESS ENTERPRISE (DBE) PARTICIPATION

The Illinois Tollway hereby notifies all respondents that it will affirmatively ensure that in any contract entered into pursuant to this solicitation, disadvantaged, minority, women-owned business and Small Business Administration (SBA) 8(a) enterprises are encouraged to submit a SOI response to this invitation and/or to participate in the advertised Disadvantaged Business Enterprise (DBE) goal of the work to be performed under the contract as a Subconsultant.

Any agreement between a Prime Consultant and a DBE or other Subconsultant in which the Prime Consultant requires that the Subconsultant not provide professional services proposals to other vendors is prohibited.

To qualify as an eligible DBE, the firm must be currently certified by one of the following agencies currently participating in either (A) the Illinois Unified Certification Program (IL UCP); (B) the City of Chicago, Illinois; or (C) the County of Cook, Illinois, as a Minority or Women-Owned Business ("M/WBE") pursuant to their M/WBE programs; or (D) it must be currently participating in the Small Business Administration SBA 8(a) Program. A DBE is considered to have current certification if the firm is listed in the directory database of the pertinent certifying agency:

- IL UCP - Illinois Department of Transportation (IDOT)
- IL UCP - Chicago Transit Authority (CTA)
- IL UCP - PACE
- IL UCP - METRA
- IL UCP - City of Chicago
- City of Chicago – M/WBE
- Cook County, Illinois – M/WBE
- Small Business Administration SBA 8(a)

Each DBE firm utilized must be listed in a certifying agency's database at the time of the expiration of the extended documentation period, if utilized, as described below to be considered acceptable. Please provide proof of certification (example: letter) with your SOITEAM submittal. Certification letters must be current, and DBE and VOSB vendor's scope(s) of work stated in the SOI and Letter of Intent (LOI) must match the area(s) of specialty specified in the DBE's or VOSB's certification letter. Failure to provide the required DBE/VOSB participation/utilization information in the SOITEAM may result in the SOI being deemed non-responsive.

You can view/print and download the most current listing of DBE firms at:

- IDOT's web site: <https://webapps1.dot.illinois.gov/UCP/ExternalSearch>
- City of Chicago's web site: <https://chicago.mwdbe.com/>
- County of Cook, Illinois' web site: <https://cookcounty.diversitycompliance.com/>
- Small Business Administration's SBA 8(a) web site: <https://dsbs.sba.gov/>

If a Vendor cannot obtain sufficient DBE commitments to meet the contract goal, the Vendor must document its good faith efforts to meet the goal, including any DBE participation secured, and request a partial or full waiver of the contract goal. Demonstrating good faith efforts means that the Vendor must show that all necessary and reasonable steps were taken to achieve the contract goal, meaning those steps that could be reasonably expected to obtain sufficient DBE participation. Mere pro forma efforts are not good faith efforts, and the documentation must be supported by backup evidencing contact attempts and results made by the Vendor to DBE firms. Vendors should not submit pricing information received from DBE firms with the good faith efforts documentation.

Examples of good faith efforts and the contact log are available in the List of Documents, Exhibit F, Section 7.10 of the State of Illinois Veteran Small Business Participation and Utilization Plan and in Exhibit H, Section 6.5 of the Tollway DBE Participation, Utilization Plan and Letter of Intent for Professional Services.

Extended Documentation Period for Vendors with a Technical Issue as determined by the Illinois Tollway related to the DBE and VOSB Commitment Made on a SOI:

All required DBE/VOSB documentation must be completed to the fullest extent possible and submitted with the SOI, including the signed DBE/VOSB Letters of Intent (LOI) and SOITEAM. The SOITEAM data will take precedence.

NOTE: the percentage inserted in the SOITEAM will take precedence over any other percentage inserted in the LOI data in the event of a discrepancy.

Each Consultant submitting a SOI who has a DBE/VOSB commitment with a technical issue as determined by the Illinois Tollway related to DBE/VOSB participation that is identified during initial review of a SOI by the Illinois Tollway shall be allowed, upon an email notification from the Illinois Tollway, an extended documentation period which will extend until 5:00 pm CT on the second business day after the day the notification is sent (e.g. if a Consultant is notified on Monday, extended documentation period concludes on Wednesday at 5:00 pm).

The extended documentation period allows a Consultant solely to correct their initial SOITEAM data to add or adjust DBE/VOSB participation to:

- Meet or exceed the initial DBE/VOSB commitment stated in the SOI, if that initial commitment was above the advertised DBE/VOSB goal, or
- Meet or exceed the goal, if the initial DBE/VOSB commitment stated in the SOI was below the advertised DBE/VOSB goal.

The Consultant shall submit updated SOITEAM data and LOI if additional or adjusted DBE/VOSB participation is secured by the end of the extended documentation period.

Under no circumstances is a Consultant allowed to remove, replace or reduce the DBE/VOSB participation of a certified DBE/VOSB firm listed in the initial LOI and SOITEAM data without prior written consent of Illinois Tollway. Increases to DBEs/VOSBs listed in the initial LOI and SOITEAM data are allowed. Under no circumstances is the Consultant allowed to change any documentation unrelated to the correction of the technical issue identified. Any adjustment made to the DBE/VOSB portion of the LOI and SOITEAM data during the extended documentation period must include a brief statement describing the revision(s) with resubmittal of the LOI and SOITEAM data. Any other changes to the original SOI will not be accepted.

Illinois Tollway Disclaimer Statement: Disadvantaged Business Enterprises (DBE) Directory, City of Chicago or Cook County, Illinois Minority and Women-Owned Business (M/WBE) Directories, or Small Business Administration SBA 8(a) Directory

Firms listed in either the Illinois Unified Certification Program (IL UCP) Disadvantaged Business Enterprises Directory or the City of Chicago Minority and Women-Owned Business Directory have been certified as a Disadvantaged Business Enterprise (DBE) by one of the IL UCP participating agencies (Illinois Department of Transportation, City of Chicago, Chicago Transit Authority, Metra and Pace) or by the City of Chicago. Firms listed in the County of Cook, Illinois M/WBE Directory have been certified as Minority or Women Owned Business Enterprises by the County of Cook, Illinois. Firms listed in the Small Business Administration SBA 8(a) Directory have been certified as SBA 8(a) business enterprises by the Small Business Administration.

The criteria, standards and procedures by which certification decisions are made can be obtained from any of the certifying agencies. These directories are to be used as an “informational source only” and the following must be considered:

- Certification does not mean that a firm is in any way prequalified to provide the products and/or services the firm claims it can provide. “Certification” means that the certifying agency has determined, on the basis of information provided and the representations therein, that a business is a bona fide DBE. The certifying agency does not, as a result of any listing, make any representation concerning the ability of any listed firm to perform work in the specialty listed;
- The Illinois Tollway does not, through its use of, and referral to, certification lists, make any representation concerning the ability of any listed firm to perform work in the specialty listed.
- The Illinois Tollway, in awarding a contract, has discretion in determining whether a DBE firm’s listed work categories are eligible to be counted toward the fulfillment of DBE contract goals; and
- It is the responsibility of all vendors to:
 - a) Conduct their own investigation to determine the capability and capacity of the DBE firm(s) to satisfactorily perform the proposed work; and
 - b) Ensure the DBE firm(s) is currently certified. A DBE is considered to have current certification if the firm is listed in the directory database of the pertinent certifying agency.

These directories list the most current certified firms. If there are any questions concerning these directories, please contact the certifying agency.

For more details about DBE utilization/participation, good faith efforts and related documentation requirements, refer to Exhibit H.

2.6 PARTNERING FOR GROWTH PROGRAM GUIDELINES (formerly Partnership-Mentor/Protégé Program Guidelines)

The Partnering for Growth Program and Documents have been updated to include the Reverse DBE_VOSB P4G Exhibit E and the standard DBE_VOSB P4G Exhibit E.

The Partnering for Growth Program applies to both Disadvantaged Business Enterprises (DBE) and Veteran-Owned Small Businesses (VOSBs) firms. Separate Exhibit E’s – Partnering for Growth Program and Reverse Partnering for Growth forms are available for use for either a DBE or VOSB. Vendors may have multiple Partnering for Growth agreements in either the DBE and/or VOSB category(ies) and may have partnerships with both. More information on the Partner for Growth Program can be found at <https://www.illinoistollway.com/doing-business/diversity-development/programs/partnering-for-growth>

2.7 STATE OF ILLINOIS VETERAN SMALL BUSINESS PARTICIPATION AND UTILIZATION PLAN

This solicitation includes specific Veteran Small Business participation goal(s) as specified in each Item detail based on the availability of CEI-certified veteran-owned (VOSB) vendors to perform or provide the anticipated services required by this solicitation. The Veteran Small Business participation goal is applicable as specified in each Item detail. In addition to the other award criteria established for this solicitation, the Illinois Tollway will award contracts under this PSB to a Vendor that meets the goal or makes good faith efforts to meet the goal. Vendor must submit a Utilization Plan and Letter of Intent with its SOI. Refer to PART III, List of Documents, Exhibits, and Other Attachments, for submittal instructions. As stated in Exhibit F, to qualify as

an eligible VOSB the firm must be currently certified, at the time of the Professional Services Bulletin due date, by the State of Illinois Commission on Equity and Inclusion. Registration is available at: <https://supplierdiversitymanagementportal.illinois.gov/home.aspx>

2.8 TEAMING AGREEMENT

The action of joining forces with another vendor to submit on a Professional Services Bulletin (PSB) is called Teaming. All former policies and procedures referring to Joint Venture still apply, with Teaming as the name of the effort.

Team SOIs shall comply with the same requirements set forth for individual SOIs, including, but not limited to, the submittal (under the Team's SOI code name) of the SOI, SOITEAM data, Exhibits, and Disclosures. A Team SOI represents a unique submittal and shall not be combined with an individual SOI from the Team Lead or submittals from other, unique teams.

Team members and a Team Leader must clearly be identified with the SOI submittal, and Team Lead shall be considered the Prime Consultant upon selection. A Team Lead can only select one D/M/WBE category but may provide evidence of multiple certifications by attaching any supporting documentation in the attachments tab before submitting. The selection criteria for the Team will include the Team members' prequalification categories, and the sum of the individual firm's work capacity and evaluation history.

The Illinois Tollway requires the Team to **self-perform no less than 40%** of the work, meaning the Team cannot subcontract more than 60% of the project work. The scope of work to be performed by each Team member and its Subconsultants must be clearly defined and leave no room for interpretation in the SOI. Each Team member must make a substantial contribution to the performance of the work being completed by the Team. Factors that may be considered by the Illinois Tollway, in its sole discretion, in determining what constitutes a substantial contribution include, but are not limited to, the number of participants in the Team, the professional qualifications of each member, and the nature of the work being performed.

The Illinois Tollway **DOES NOT** have a form for Teaming Agreements. However, the firms submitting as a Team are required to obtain and submit their Teaming Agreement. A Teaming Agreement, signed by all members, **MUST** be submitted within ten (10) business days after contract negotiations and prior to Board award. The Teaming Agreement will clearly identify the Team members, their percentage interest / share, as well as respective rights and responsibilities. The Teaming Agreement shall further designate a Team Lead who will assume responsibility for invoicing. **The Team may have no more than three participants.**

Each Team member shall procure and maintain separate insurance policies that meet the Illinois Tollway's insurance requirements. The Tollway's standard insurance requirements are set forth in the Vendor Agreement boilerplates (See Illinois Tollway website: <https://www.illinoistollway.com/doing-business/construction-engineering/forms> under Doing Business> Construction and Engineering: Vendor Resources under Vendor Forms). Each Team member will procure and maintain policies that meet the Prime Consultant's required level of coverage and shall indemnify the Team and the Tollway against claims arising from their performance under the Team, as well as agreeing to remain joint and severally liable upon termination of the Project and/or the Team. In the event of the termination of the Team, the insurance and indemnification rights of the Team must be assignable to the Illinois Tollway as a matter of law. Proof of compliance with these requirements must be submitted to the Illinois Tollway prior to issuance of the Illinois Tollway's Notice to Proceed.

Team SOI submittal requirement overview:

- Designate a single point of contact who shall serve as the Team's primary contact with the Illinois Tollway.
- Indicate the Team member responsible for each prequalification category.
- The Team Lead shall submit outstanding work obligations, and Vendor Disclosures (formerly Forms A) or IPG Active Registration Vendor Disclosures (formerly Forms B) (as applicable) for each of the Team members.
- Identify the Team member responsible for invoicing.
- For Exhibit A, plus other required documents specified in the PSB, combine the information for all participating Team members.

- Submit the Teaming Agreement within ten (10) days after contract negotiation and prior to Board award.

A firm planning to submit a SOI as a Team is required to contact the Illinois Tollway for a Team SOI Firm Name Code. Contact CS staff via e-mail at csstaff@getipass.com. The Team SOI Firm Name Code as provided by the Illinois Tollway is required to identify and process the submittal as a Team proposal.

Only the Team Lead is required to fill out the SOITEAM data on behalf of the Team. It is imperative that the other Team members do NOT submit SOITEAM data if they are not the Team Lead. The Team Lead must clearly identify the Team members and Subconsultants doing work for or in conjunction with the Team within the Team SOITEAM data submittal.

Example of a Team (TM) submittal: Companies forming Team are:

- Company A
- Company B
- Company C
- Team Firm Name Code as provided by the Illinois Tollway is: ABC_TM

Team members naming parameters are:

- ABC_TM (Company A) "Managing Partner"
- ABC_TM (Company B)
- ABC_TM (Company C)
- Subconsultants to the Team Lead: J. Smith Consulting (Company B)
- F.J. Engineering (Company C)
- Subconsultants to the Team members: G. Engineering (Company A)
- Materials Inc. (Company A)
- Surveying Services (Company B) Jersey Consulting (Company B) KL Services (Company C)
- LMN Engineering (Company C)

2.9 MANUALS, PROCESSES AND GUIDELINES

Manuals are available on the Tollway website to provide guidance on contract requirements, procedures and responsibilities.

<https://www.illinoistollway.com/doing-business/construction-engineering/manuals-processes-guidelines#Construction%20and%20Materials>

2.10 PHASE II: DESIGN ENGINEERING SERVICES

The scope of work will generally include certain Phase II engineering services to be provided during construction. Such services may include, but not be limited to, shop drawing review, value engineering proposal review, attending construction phase meetings and responding to requests for information related to design. The scope of such services will be determined after the Consultant is selected as appropriate.

2.11 PHASE III: CONSTRUCTION ENGINEERING SERVICES

The following applies to all Phase III Engineering service items.

After the Consultant has been selected, the Construction Manager (CM) shall provide the following to the Illinois Tollway:

The Consultant selected for the Construction Management (CM) Services shall submit for the Illinois Tollway's review and approval, a management plan for the specific Project(s) for which the Consultant is selected. This management plan shall include an outline of the full-time or part-time plant, on-site inspection services, sampling and laboratory testing the Consultant is providing for Quality Assurance. The selected CM's Consultant's Quality Program (CQP) shall include the identification and pre-qualifications of the Field Inspectors and Laboratory Technicians to be assigned to this project as employees of the Consultant or a qualified Subconsultant. The CQP shall include periodic verification by an independent qualified

Subconsultant that the Quality Assurance operations are proceeding as specified using the proper methods of sampling and testing.

The name of any accredited material laboratory(ies) to be utilized for the quality assurance work must be provided with the CQP. The laboratory must be accredited under the AASHTO Accreditation Program (AAP) for all required test procedures specified in IDOT Bureau of Materials Policy Memorandum "Minimum Private Laboratory Requirements for Construction Materials Testing or Mix Design."

2.12 CONSTRUCTION AND QUALITY ASSURANCE CONSULTANTS

Personnel performing materials testing for aggregate, PCC, and HMA shall have completed the appropriate IDOT Quality Management Training Program classes. Personnel performing soils inspection and field tests shall have completed IDOT class S-33, Soils Field Testing and Inspection.

The Field Inspectors assigned to any project under this PSB for on-site Quality Assurance for earthwork quality control and for monitoring the on-site asphalt construction work must be prequalified by having passed the IDOT Nuclear Density training course. The Field Inspectors assigned to the on-site quality control of concrete placement shall be prequalified by having passed the IDOT/ACI Portland Cement Concrete Level I training course. Personnel performing soils field tests shall have completed IDOT class S-33, Soils Field Testing and Inspection.

The Vendor's Quality Assurance responsibilities at the material production plants shall be performed by a Field Inspector having passed IDOT Level I and Level II (HMA and PCC) training courses to perform the specified inspection of approved materials at the concrete and asphalt plants.

2.13 QUALITY ASSURANCE PREQUALIFICATION CATEGORY

The prequalification requirements for Quality Assurance Testing are required and will follow the guidelines set by IDOT in the Prequalification information "Description and Minimum Requirements for Prequalification" SPECIAL SERVICES - Quality Assurance Testing.

The information about the Quality Assurance Testing prequalification can be located on IDOT's website at: <https://public.powerdms.com/IDOT/documents/2617622/Description%20And%20Minimum%20Requirements%20For%20Prequalification>

2.14 CLARIFICATION OF QUALITY CONTROL/QUALITY ASSURANCE REQUIREMENTS

The Quality Control/Quality Assurance personnel on Exhibit A shall not be the same personnel preparing the design documents. If the Prime Consultant does not have personnel to cover the QC/QA requirements, then a Subconsultant prequalified in the category may be used.

The following highlighted sections have been added to the Guidelines in the Professional Services Bulletin and the solicitations.

Complete **Exhibit A** as follows:

- List the required key personnel to match required prequalification categories and any additional personnel requirements designated in the project solicitation. Include firm name if work is to be completed by a Subconsultant; and
- QC/QA personnel must be different individuals than those preparing the design documents.

2.15 CONSULTANT CONTRACT FORMS

Standard forms exhibits and associated instructions to be used by Construction Management (CM) and Design Section Engineering (DSE) Consultants in preparing proposals and agreements with the Illinois Tollway are located on the Illinois Tollway website. Contracts will be awarded based on the standard Agreement templates. Selected Consultants should be prepared to execute the appropriate Agreement template. Any exceptions shall be noted in the Consultant's SOI.

<https://www.illinoistollway.com/doing-business/construction-engineering/forms>

2.16 SELF-PERFORMANCE

The Illinois Tollway requires the Prime Consultant (non-team) to self-perform no less than 40% of the work.

PART III: REPRESENTATIONS AND INSTRUCTIONS

3.1 SELECTION CRITERIA

Members of the Vendor Selection Committee will not be available to discuss specifics of projects listed in this PSB between the date of the submittal and the Selection Committee meeting. Please do not send letters or e-mails expressing interest in specific projects to members of the Vendor Selection Committee.

Selection of professional Vendors by the Illinois Tollway is based on the firm's professional qualifications, related experience, expertise, and availability of key personnel to be assigned to the project, satisfaction of diversity goals and contract compliance and what is best for the Illinois Tollway. SOIs will be evaluated based on the following criteria:

- Specialized experience when required, technical competence of the personnel, and experience of the firms and/or Subconsultants proposed;
- Performance history and expertise of the firm and any proposed Subconsultants with the work described in the Item;
- Particular attention will be given to appropriate cost saving measures and innovative ideas that will benefit the Illinois Tollway;
- Ability to complete the work in the time required and the firm's existing workload;
- Commitment and availability of Key Personnel during the term of the contract;
- Proposed method of accomplishing the project's objectives;
- Demonstrated understanding of an inclusive and substantive DBE/VOSB utilization plan; and
- Contract Compliance will evaluate submitted forms and documents, including but not limited to the SOI, LOI, and DBE/VOSB certification(s) for completeness, accuracy and verification that all requirements of the PSB have been met.

Consideration will also be given to the quality and scope of utilization plan which demonstrates an understanding of an inclusive and substantive DBE and VOSB U-Plan (Reference Section 2.5 and 2.7 for definition of "DBE" and "VOSB"), VOSB and Partnering for Growth (formerly Mentor Protégé proposals).

Consideration will also be given to the completeness and content of the compliance documentation submitted (SOI and LOI), whether the submitted documents show that at least the advertised diversity goal(s) has/have been met, and if the certification letters submitted are current and the area(s) of specialty as certified match with the scopes of work of the respective DBE/VOSB participants.

3.2 SCHEDULE FOR VENDOR SELECTION

The Illinois Tollway anticipates selecting Vendors based on the estimated schedule below:
Representatives from the Illinois Tollway will contact selected firms to schedule introductory meetings.

TASK	DATE DUE
Publish	June 4, 2025
Pre-proposal meeting 9:00:00 a.m. Central Time	June 6, 2025
Webinar on In-Road Electric Vehicle Charging (Item 1) 11:00 a.m. Central Time	June 6, 2025
Last Day for Questions no later than 4:30:00 pm Central Time	June 16, 2025
Complete SOIs are due no later than 4:30:00 pm Central Time on this date, including all required Attachments/Exhibits as specified in this PSB.	June 27, 2025
Selection Committee Meeting:	August 2025
Estimated Board Approval (earliest)	September 2025
Estimated Notice to Proceed (earliest)	November 2025

3.3 GUIDELINES FOR SUBMITTING STATEMENTS OF INTEREST (SOI)

The firm acting as the Prime Consultant must be prequalified in all of the prequalification categories requested in the project advertisement even if they plan to subcontract part of the project, except where noted in a specific project advertisement. Any Prime Consultant or Subconsultant must be prequalified by IDOT in the category of work they are performing or as stated in the item description, unless the Subconsultant is being mentored in the Partnering for Growth Program. **SEE NOTICE BELOW.**

3.3.1 REQUIRED FORMAT FOR SUBMITTING STATEMENTS OF INTEREST

3.3.2.1 THE FOLLOWING EXHIBITS AND DATA SHALL BE SUBMITTED IN ACCORDANCE WITH THE PSB SUBMITTAL INSTRUCTIONS **AND SHALL BE DOWNLOADED FROM THE ILLINOIS TOLLWAY WEBSITE.** ALL EXHIBITS SUBMITTED FOR THIS PSB MUST BE CURRENT. EXHIBITS FROM PREVIOUS PSBs WILL NOT BE ACCEPTED.

- Exhibit A: Proposed Staff
 - Required - Submit as a separate pdf document.
 - Shall include resumes
- Exhibit C: Instructions for Completing Exhibit C and Current Obligations form
 - Required - Submit as a separate pdf document.
- Exhibit D: Availability of Key Project Personnel
 - Required - Submit as a separate pdf document.
- Exhibit E-DBE/VOSB: Partnering for Growth Program
 - If proposing a mentor-protégé arrangement with a DBE or VOSB firm, this Exhibit is required.
 - Submit as a separate pdf document.
- Exhibit E- Reverse DBE/VOSB: Partnering for Growth Program
 - If proposing a mentor-protégé arrangement with a DBE or VOSB firm where the subconsultant

- is mentoring, this Exhibit is required.
 - Submit as a separate pdf document.
- Exhibit F: Veteran Small Business Participation and Utilization Plan
 - If the item includes a Veteran Goal, this Exhibit is required.
 - Submit as a separate pdf document.
- Exhibit H: DBE Participation and Utilization Plan
 - If the item includes a DBE Goal, this Exhibit is required.
 - Submit as a separate pdf document.
- Illinois Tollway Standard Business Terms and Conditions
 - Required - Submit as a separate pdf document.
- SOITEAM Data
 - Required, see Section 3.4.3 Instructions for Submitting the SOITEAM Data

3.3.2.2 PREQUALIFIED FIRMS MAY INDICATE THEIR DESIRE TO BE CONSIDERED FOR SELECTION ON ANY OF THE PROJECTS LISTED WITHIN THIS PSB BY SUBMITTING A SEPARATE SOI FOR EACH PROJECT.

3.3.2.3 EACH SOI MUST BE SUBMITTED USING THE FOLLOWING BASIC FORMAT:

COVER SHEET

Include Full Legal Prime Consultant Name, PSB Number, Item Number, and **all** known Subconsultants (Full Legal Firm Names).

Section 1. Executive Summary (limit of 5 pages)

- A. Legal Name of Prime Consultant, address, telephone number, e-mail address and contact person.
- B. List all known Subconsultants, the work the firm(s) will be performing and a contact person for each. Identify any DBEs (Reference Section 2.5 for definitions) and VOSBs. Include Mentor and Protégé data if applicable.
- C. Name of Project Manager.
- D. Name of Project Engineer/Resident Engineer.
- E. Project Understanding.
- F. Project Approach (include brief statement of firm's unique qualifications and experience, approach to the project's specific challenges such as maintenance of traffic, environmental constraints, budget constraints, schedule constraints, design challenges, etc.).
- G. Statement that firm will meet or exceed the DBE goal and VOSB goal as applicable for the item. Include the proposed percentage of work to be completed by proposed DBE and VOSB firms (Percentages shall match those submitted with the SOITEAM data). For each proposed DBE firm, include a current certification letter that shows that the DBE/VOSB firm is certified in its scope(s) of work stated in the SOI and its LOI. (IDOT Prequalification in the respective scope will meet this requirement.)

Section 2. Organization Chart

Include names and titles for all Key Project Personnel.

Section 3. Relevant Project Experience

Include a minimum of three (3) relevant projects of equal or greater complexity accomplished within the past five (5) years, demonstrating the firm's experience in the type of work required for this project. Color graphics and photographs may be sent with the files.

Include performance ratings for past work done for the Illinois Tollway, IDOT, or any other government agencies or public bodies, if applicable.

Section 4. Conflicts of Interest

Statement acknowledging any known or potential conflicts of interest the Prime Consultant may have.

NOTICE

Pursuant to Illinois Department of Transportation (IDOT) Prequalification rules and procedures, the Illinois Tollway will accept your firm's prequalification the same as IDOT, in that your firm is prequalified until (Fiscal Year + 1 year). As per IDOT, your firm will be given an additional six months from this date to submit the applicable portions of the "Statement of Experience and Financial Condition" (SEFC) to IDOT to remain prequalified.

The firm remains prequalified during this six (6) month grace period. Once the data is submitted to IDOT, either before or on the due date, the firm remains prequalified in the current categories until IDOT reviews a category and decides. If there is not a submittal by the due date, the firm is automatically listed as not approved.

IDOT provides a listing of prequalified consulting firms on the website:

<http://www.idot.illinois.gov/doing-business/procurements/engineering-architectural-professional-services/index>

This list is typically updated weekly and is based on the most recently approved SEFC application. Firms are encouraged to monitor their prequalification status in IDOT's EPAS system. This notice also applies when utilizing a Subconsultant to meet prequalification requirements on a project.

3.4 SUBMITTAL INSTRUCTIONS

All submittals for this PSB will be received through the Illinois Tollway's Trimble Unity Construct PSB SOI process at:

<https://app.e-builder.net/>. Contact wbpm@getipass.com for training and login information.

Firms that are teaming and preparing an SOI must use the code name assigned for the team. When a firm is submitting on behalf of a team, a unique Trimble Unity Construct account and login ID are required. The team SOI submittal must be created and submitted by the Prime Consultant. (Important Reminder: if a Prime Consultant is submitting for themselves, that account and login ID will be different from the account and login ID that they will use to submit for a team).

The preparation of the SOI for submittal in Trimble Unity Construct must be done in one Trimble Unity Construct account, i.e., one account login ID. Each account/login has access only to the Trimble Unity Construct PSB SOI process instance that is being created in that account. Each Trimble Unity Construct PSB SOI process instance can only be seen from the login that created it.

One SOI is required for each PSB item. The subject line will be created in the Trimble Unity Construct PSB SOI process when you select the item number your firm will be submitting for from the pull-down menu. Complete Trimble Unity Construct instructions for the PSB SOI process can be found in the upper right-hand corner of the SOI instance.

This is not an invitation for bids. Firms properly prequalified for the projects listed herein may indicate their desire to be considered for selection by submitting an SOI to the Illinois Tollway via the Trimble Unity Construct PSB 25-2 SOI process.

The Illinois Tollway follows the Qualifications Based Selection (QBS) process mandated by Illinois statute (30 ILCS 535/1 et seq.): Architectural, Engineering, and Land Surveying Qualifications Based Selection Act for selecting qualified Vendors under this PSB.

SOI Trimble Unity Construct submittals must be received by the due date and time as noted in this solicitation. Any submittals received after that time will be considered late and the user will receive an Trimble Unity Construct notification stating that the PSB SOI date and time has expired. Late submittals will not be accepted

by the Illinois Tollway. NOTE: You must set the Time Zone field on your Trimble Unity Construct account profile page to “(UTC-06:00) Central Time (US & Canada)” so that you can submit your SOIs up until the submittal deadline.

Please carefully read the instructions below BEFORE submitting your SOIs.

3.4.1 GENERAL INSTRUCTIONS

It is CRITICAL that submittal instructions be followed. All Forms must be submitted per the instructions provided. Failure to do so may result in an incomplete submittal resulting in your firm being disqualified. For further information on accessing the Illinois Tollway Website, PSB and Exhibits, please refer to the Table of Contents.

3.4.2 NAMING AND LABELING INSTRUCTIONS

- The Illinois Tollway requires electronic submittals for the Professional Services Bulletin’s SOIs via the established Trimble Unity Construct PSB process. All respondents must utilize a unique 2 to 6-character SOI Firm Name Code assigned by the Illinois Tollway.
- To determine the designated SOI Firm Name Code go to the Illinois Tollway’s website under Doing Business>Construction and Engineering - see Vendor Resources and click on the link to the Professional Services Bulletin page. The current SOI Firm Name Code List will be posted under the “Required Forms” section. If your firm is not included on the list, or your firm name has changed, please contact PSB Coordinator, csstaff@getipass.com, for an assigned SOI Firm Name Code.
- When submitting “Team” files please, use the **new** SOI Firm Name Code assigned by the Illinois Tollway to the Team. The SOI Firm Code Name is exclusive to the electronic submittal – meaning it does not establish the name of the Team. Please contact PSB Coordinator, csstaff@getipass.com, for an assigned SOI Firm Name Code.

3.4.3 INSTRUCTIONS FOR SUBMITTING THE SOITEAM DATA

The SOITEAM information is now input into the “SOITEAM data” section in Trimble Unity Construct. The following still apply to your submittal. Failure to provide the required information in the SOITEAM may result in the SOI being deemed non-responsive.

- Vendors are required to complete the SOITEAM data section for each Item, completing all columns shown for the Prime Consultant, and for every Subconsultant that is being proposed. ***Do not enter “TBD” or enter a range of percentages, and do not leave blank cells. Totals must equal 100%.***

TEAM submittals:

- NOTE: If a firm is submitting as a Prime Consultant and also as a Team lead for one or more teams, a separate SOI and the SOITEAM data information must be submitted for each. DO NOT combine SOITEAM data information for unique SOI submittals.
- When entering Prime Consultant or Subconsultant information in the SOITEAM data section, please follow the below instructions:
 - Add new item for firm information for each team member
 - Under Team Member Role, select Prime (Lead Teaming Partner) or Prime (Non-Lead Teaming Partner)
 - Teams with three firms may enter an additional firm and select Prime (Non-Lead Teaming Partner)
 - Select Subconsultant for the Firm Role for any additional firms that are included in the SOI.
 - Below is a sample of how the Team members and Subconsultants are to be entered and submitted within the SOITEAM data section:

SOI use the team's unique 2-6-character SOI Team Name Code	pdf	Trimble Unity Construct
Illinois Tollway Standard Business Terms and Conditions	ABC_TC.pdf	Submit as a separate document on Trimble Unity Construct
Teaming Agreement Illinois Tollway Standard Business Terms and Conditions.	ABC_TC_TM.pdf DEF_TC_TM.pdf GHI_TC_TM.pdf	Submit as a separate document on Trimble Unity Construct for each Team member
Illinois Board of Elections Registration document	ABC_BOE.pdf	Submit as a separate document on Trimble Unity Construct
Teaming Agreement Illinois Board of Elections Registration document	ABC_BOE_TM.pdf DEF_BOE_TM.pdf GHI_iBOE_TM.pdf	Submit as a separate document on Trimble Unity Construct for each Team member
Vendor Disclosure (formerly Forms A) or IPG Active Registered Vendor Disclosure (formerly Forms B) (Disclosures) – are required. To submit use your 2-6-character SOI Firm Name Code followed by DS.	ABC_DS.pdf	Submit as a separate document on Trimble Unity Construct
Teaming Agreement Vendor Disclosures (formerly Forms A) or IPG Active Registration Vendor Disclosures (formerly Forms B) (Disclosures) – are required. Use the unique 2-6-character SOI Firm Name Code for EACH individual Team firm name followed by _DS_TM	ABC_DS_TM.pdf DEF_DS_TM.pdf GHI_DS_TM.pdf	Submit as a separate document on Trimble Unity Construct for each Team member
Exhibit A – Proposed Staff – Key Project Personnel. a. Include resumes for Key Project Personnel proposed for the project (Prime Consultant and Subconsultants for those specific positions identified in the PSB item description). Resumes for each individual should not exceed two (2) pages and should include only relevant experience for the specific Item. b. List the Key Project Personnel to match the required prequalification categories and any additional personnel requirements designated in the Bulletin Items. (Include firm name if work is to be completed by a Subconsultant). c. QC/QA personnel must be different individuals than staff preparing the design documents. Construction Management Services require the names and resumes of Certified Record Documentation Reviewers and Inspectors that will be assigned to the project. Specific requirements are explained in the Phase III Items.	ABC_ExA.pdf	Submit as a separate document on Trimble Unity Construct

3.4.5 COMMON MISTAKES

The following is a list of common mistakes found when submitting a Professional Services SOI. This list is not intended to be exhaustive and Vendors should make every attempt to avoid these common mistakes in their submittals or the submittal may be deemed non-responsive and may not be scored.

- General
 - Failure of minimum 40% self-performance by the Prime Consultant
 - Inconsistent percentages throughout SOI submittals
 - Incorrect PSB #
 - Incorrect Contract #
 - Changing anonymous Trimble Unity Construct PSB account profile entries
 - Submitting too close to the deadline
 - Failure to save attached document in the correct item folder for that submission.
 - Failure to provide the required DBE/VOSB participation/utilization information in the SOITEAM may result in the SOI being deemed non-responsive.
- SOITEAM Data
 - Leaving blank spaces
 - Percentage does not equal 100% – this percentage should include the Prime Consultant and Subconsultants
 - Failure to include all Firms from the SOI (Prime Consultant, Team, Subconsultants etc.)
- Exhibits
 - Failure to submit Exhibit E when proposing P4G plan in the SOITEAM data
 - Unnecessarily submitting Exhibit E when not proposing P4G in SOITEAM data
 - Failure to submit correct version of Vendor Disclosures (formerly Forms A) or IPG Active Registration Vendor Disclosures (formerly Forms B)
 - Failure to list all required Key Personnel on Exhibit A
 - Change of the title of Key Personnel on Exhibit A
 - Failure to list % on Terms and Conditions FEIN page
 - Percentages different than SOITEAM Grid Data
- Teams
 - Failure to include all Team members on Exhibit C (Workload)
 - Failure to include Terms and Conditions for all Team members
 - Failure to include Vendor Disclosures (formerly Forms A) or IPG Active Registration Vendor Disclosures (formerly Forms B) for all Team members

3.5 DISCLOSURES AND CERTIFICATIONS

3.5.1 INSTRUCTIONS FOR SUBMITTING DISCLOSURES

The submittal shall contain either Vendor Disclosures (formerly Forms A) or IPG Active Registration Vendor Disclosures (formerly Forms B). SOIs submitted without Vendor Disclosures (formerly Forms A) or IPG Active Registration Vendor Disclosures (formerly Forms B) shall be deemed non-responsive. Vendor Disclosures (formerly Forms A) section shall be returned by Firm(s) that are not registered in the Illinois Procurement Gateway (IPG). Enter the BidBuy number on either Vendor Disclosures (formerly Forms A) or IPG Active Registration Vendor Disclosures (formerly Forms B) when asked to supply an IPB Reference #.

IPG Active Registration Vendor Disclosures (formerly Forms B) shall be returned by Firm(s) that have a current, approved IPG registration.

Vendor Disclosures (formerly Forms A) Section

Complete this section if you **are not using** a current, approved Illinois Procurement Gateway (IPG) Registration number.

<https://www.illinoistollway.com/doing-business/construction-engineering/forms>

1. Business and Directory Information
2. Illinois Department of Human Rights Public Contracts Number
3. Authorized to Do Business in Illinois
4. Standard Certifications
5. State Board of Elections
6. Disclosure of Business Operations in Iran
7. Financial Disclosures and Conflicts of Interest
8. Taxpayer Identification Number
9. Signature

IPG Active Registration Vendor Disclosures (formerly Forms B) Section

Complete this section only if you are **using** a current, approved IPG Registration number.

<https://www.illinoistollway.com/doing-business/construction-engineering/forms>

1. Certification of Illinois Procurement Gateway Registration #
2. Certification Timely to this Solicitation
3. Disclosures of Lobbyist or Agent
4. Disclosure of Current and Pending Contracts
5. Signature

3.5.2 INSTRUCTIONS FOR SUBMITTING ILLINOIS TOLLWAY STANDARD BUSINESS TERMS AND CONDITIONS

Submit the Illinois Tollway Standard Business Terms and Conditions. This document is also available on the Illinois Tollway website and submit as a separate document on Trimble Unity Construct. Team leads must submit Illinois Tollway Standard Business Terms and Conditions for themselves and team members.

3.6 PROTEST PROCEDURE

Vendors may submit a written protest to the Protest Review Office following the requirements of the IDOT Standard Procurement Rules 44 ILL ADM 6.390 through 6.440. All protests shall be in writing and filed with the CPO within seven (7) calendar days after the protester knows or should have known of the facts giving rise to the protest. Protests filed after the seven (7) calendar day period will not be considered. In addition, protests that raise issues of fraud, corruption or illegal acts affecting specifications, special provisions, supplemental specifications and plans must be received by the CPO no later than fourteen (14) calendar days before the date set for opening of bids. The Protest Review Office information is as follows:

Chief Procurement Office for General Services
Attn: Protest Review Office
Email: cpogs.pro@illinois.gov

3.7 USEFUL LINKS

The Illinois Tollway website- <https://www.illinoistollway.com/>

Professional Service Bulletin- <https://www.illinoistollway.com/doing-business/construction-engineering/bids-bulletins-awards>

Vendor Contract Forms (required forms for submittal) - <https://www.illinoistollway.com/doing-business/construction-engineering/forms>

Vendor Invoicing Forms - <https://www.illinoistollway.com/doing-business/construction-engineering/forms>

Partnering for Growth Program - <https://www.illinoistollway.com/doing-business/diversity-development/programs/partnering-for-growth>

Trimble Unity Construct website- <https://app.e-builder.net/>

Trimble Unity Construct PSB SOI user manual, FAQ file, and training videos- <https://app.e-builder.net/public/PublicFolderView.aspx?FolderID=%7bdc0355ee-4323-458e-91b5-547c6655b5f5%7d>

Trimble Unity Construct PSB SOI training webinar dates and registration information- <http://www.onlineregistrationcenter.com/registerlist.asp?m=176&p=134&group=57&tid=222>

Bid Buy - <https://www2.illinois.gov/cpo/general/Pages/BidBuy/BidBuy.aspx>

Chief Procurement Office/Illinois Procurement Gateway (IPG) – Vendor Registration - <https://ipg.vendorreg.com/>

State Board of Elections - <https://www.elections.il.gov/#News>

Illinois Department of Central Management Services – Travel Reimbursement Schedule - <https://www2.illinois.gov/cms/employees/travel/pages/default.aspx>

National Institute of Standards and Technology - <http://www.nist.gov/>

Illinois Department of Transportation - <http://www.idot.illinois.gov/>

Illinois Department of Transportation Manual of Test Procedures for Materials <https://public.powerdms.com/IDOT/documents/2732503>

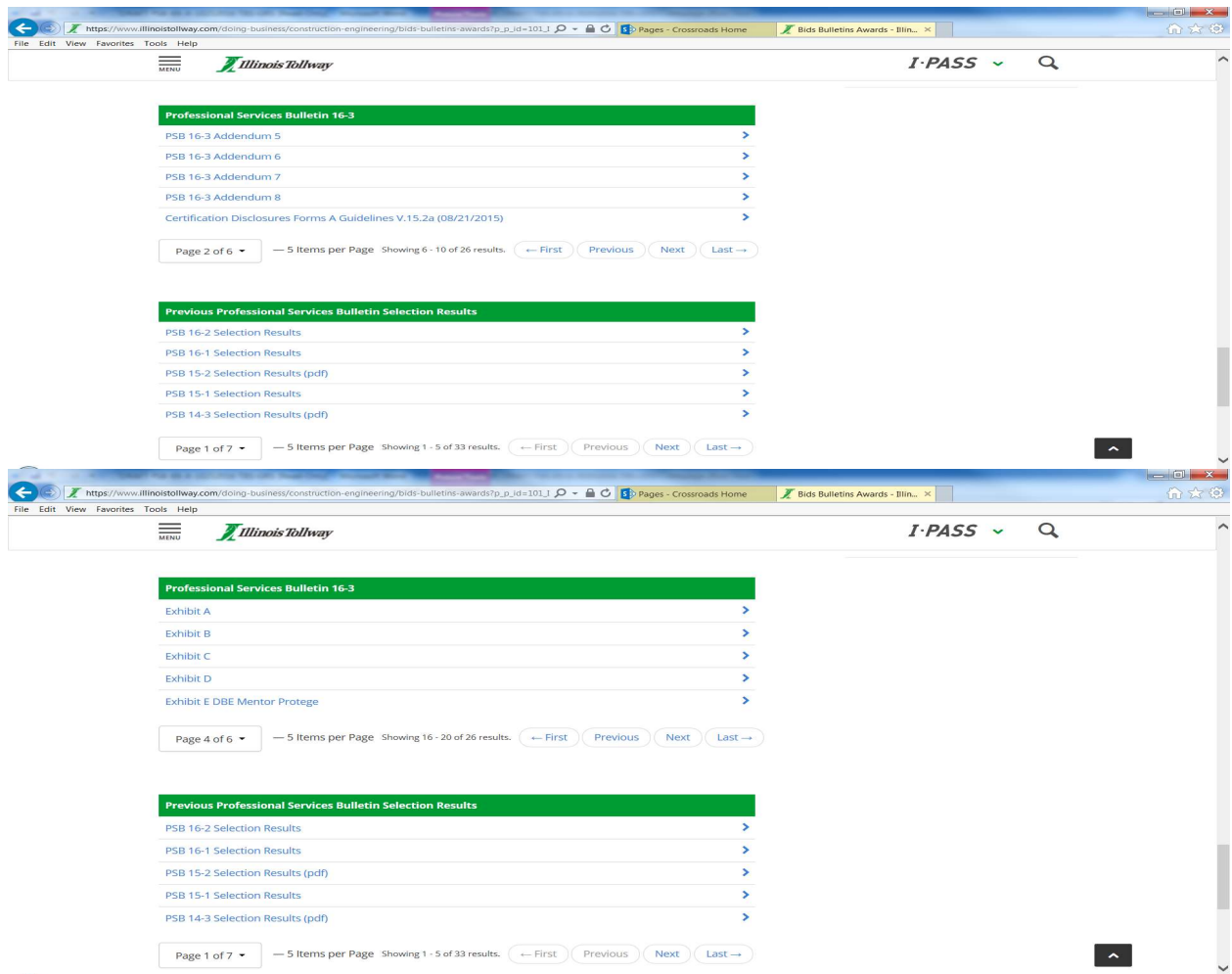
3.8 ILLINOIS ePROCUREMENT BidBuy NOTICE

To register in the Illinois eProcurement System, please follow these instructions:

- Go to <https://www.bidbuy.illinois.gov/bsol/>
- Please direct questions regarding the registration process or the use of BidBuy to email address: stateuser.bidbuy@illinois.gov or the Procurement Help desk at 217-557-8992.

3.9 INFORMATION ON ACCESSING ILLINOIS TOLLWAY WEBSITE

- Go to www.illinoistollway.com
- Click on “Menu”
- Click “Doing Business”
- Click “Construction and Engineering”
- Middle of page, under “How Can We Help You? / Vendor Resources” click “Professional Services Bulletin”
- *Helpful Hint: A limited number of items are shown under “Professional Services Bulletin” on each page; click “Next” to view additional items.



3.10 FUTURE PROFESSIONAL SERVICES BULLETIN NOTIFICATIONS

To receive notification from the Illinois Tollway that a Professional Services Bulletin has been posted, or to Unsubscribe, please email Catrice Hardwick-Giles chardwick@getipass.com or call 630-241-6800 extension 4653.

Include the following information:

Please add this contact to receive notification from the Illinois Tollway that a Professional Services Bulletin has been posted:

Name of firm _____

E-mail address _____

Contact person (corresponding with e-mail) _____

3.11 RESERVED

3.12 PSB 25-2 EXCHANGES WITH FIRMS AFTER SOI SUBMISSION

Discussions may be held with Firms to clarify certain aspects of their SOIs.

- Discussions are limited exchanges between the Tollway and Firms that may occur during the responsiveness determination. For purpose of this PSB, such discussions shall be exchanged only between the Firm and the Designated Procurement Contact for this PSB.
- Please use the e-mail address: csstaff@getipass.com
- These exchanges shall not provide an opportunity for the Firm to revise its SOI, but may only address:
 - Deficiencies
 - Errors
 - Omissions
- Responses are due to the Illinois Tollway on the due date established by the Illinois Tollway. Discussions may be initiated by the Illinois Tollway after that time. Firm's responses that are not received timely shall result in the SOI being considered non-responsive.

Certain requirements are not open for discussion and, if not met, shall render the SOI non-responsive:

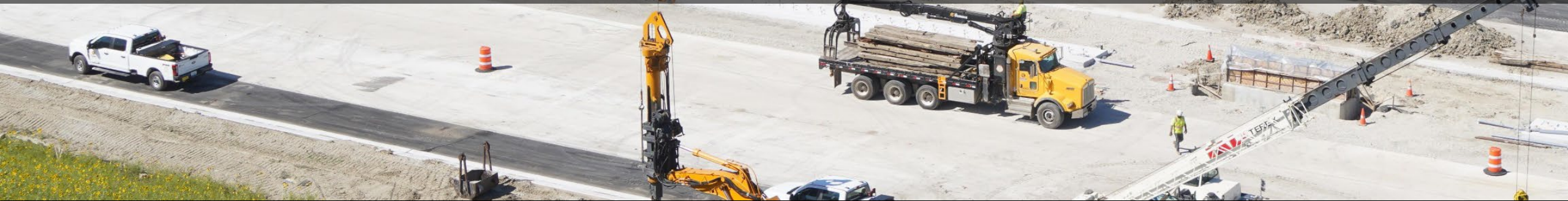
- Late submissions, including omission of the required documents as stated in the PSB:
 - SOI
 - Disclosures (DS)- Vendor Disclosures (formerly Forms A) or IPG Active Registration Vendor Disclosures (formerly Forms B)
- Omission of State of Illinois requirements
- Inability to meet eligibility requirements as stated in 44 Ill. Admin. Code 625.70, Confirmation of Eligibility.



PROFESSIONAL SERVICES BULLETIN 25-2

Pre-Proposal Meeting

June 6, 2025



INTRODUCTIONS

Vanessa Ramos

**Senior Contract
Negotiator**

Alex Karahalios

**Business Analyst
Diversity**

Seannica Spencer

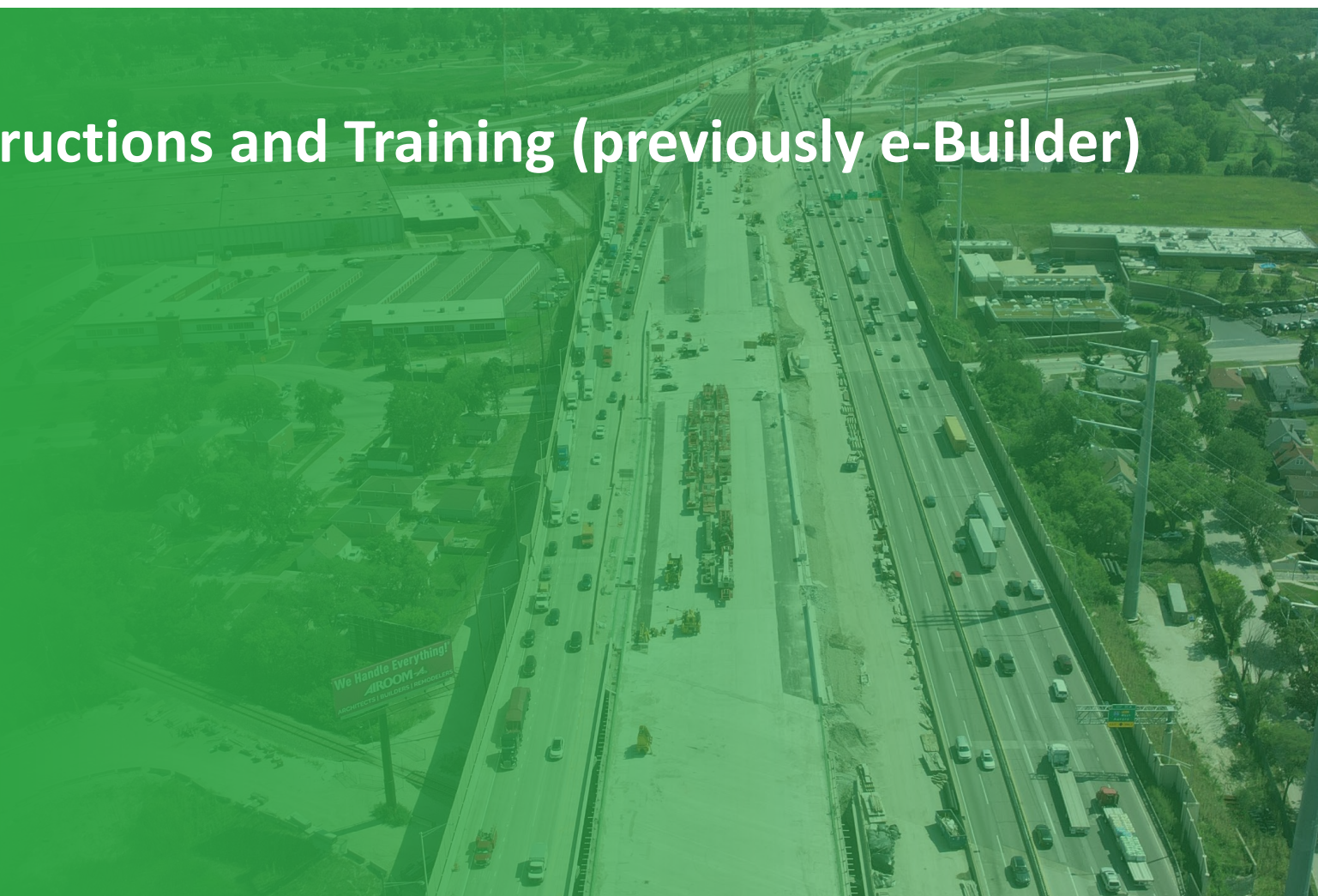
**Contract Compliance
Manager**

Cindy Williams

**Deputy Chief of
Program
Implementation**

AGENDA

- Trimble Unity Construct Instructions and Training (previously e-Builder)
- PSB Submission
- PSB Schedule
- PSB Questions Submittal
- Tollway Compliance
- Diversity Requirements
- PSB 25-2 Items



SUBMISSION VIA TRIMBLE UNITY CONSTRUCT

Section 1.2.1 PSB 25-2 summary

Information pertaining to the Trimble Unity Construct process for PSB 25-2 can be found in the Public Folder at:

- <https://app.e-builder.net/public/publicLanding.aspx?QS=8b550cb238ba4d768a53aa87d3c9cdcd>

You will need to perform the following before you can submit an SOI in Trimble Unity Construct:

- Review Trimble Unity Construct resources, including PSB SOI user manual, FAQ file, and videos (see Public Folder link above)
- Obtain Trimble Unity Construct Login ID if necessary (see Section 3.4 Submittal Instructions)
- Obtain Firm Code Name if necessary (see Section 3.4 Submittal Instructions)
- Complete Webinar Training (see Section 3.7 Useful Links for training webinar registration link)

TRIMBLE UNITY CONSTRUCT WEBINAR TRAINING OPPORTUNITIES

Register for Training

- <http://www.onlineregistrationcenter.com/registerlist.asp?m=176&p=134&group=57&tid=222>

Scheduled Virtual Training Sessions

<u>Date</u>	<u>Time</u>	<u>Date</u>	<u>Time</u>
Wednesday, June 11, 2025	1:00 PM - 2:00 PM	Friday, June 20, 2025	10:00 AM - 11:00 AM
Friday, June 13, 2025	10:00 AM - 11:00 AM	Tuesday June 24, 2025	10:00 AM - 11:00 AM
Tuesday, June 17, 2025	2:00 PM - 3:00 PM	Friday, June 27,, 2025	10:00 AM - 11:00 AM



SOI SUBMISSION

SOI

Illinois Tollway Standard Business Terms and Conditions

- Submit as a separate PDF document
- If proposing as a Team, required for all Team members

Board of Elections Registration Certification Disclosure Forms

- Vendor disclosure (formerly Form A) or IPG Active Registered Vendor Disclosure (formerly Form B)
- If proposing as a Team, required for all Team members

Firm's Commitment and Signature Form (checklist)

SOITEAM Grid Data

- Required – see Section 3.4.3 instructions for submitting
- Prime and all subs to be entered
- % must equal 100%



SOI SUBMISSION

Exhibits

- All exhibits submitted for this PSB shall be downloaded from the Tollway's website and submitted in PDF format.
- The most current exhibit forms must be used; use of prior versions of exhibits is not allowed and will not be accepted.
- Do not modify the exhibits.

Exhibit A Key Personnel

- Only list those Key Personnel identified in the Item description and include resumes.
- Staff listed must also be shown on Exhibit D.

Exhibit D Availability of Key Personnel

- Intent is to show the actual % of time anticipated to be spent on proposed project.

AVOIDING DISQUALIFICATIONS

The following instances are non-curable and will lead to a disqualification

- Late submissions
- Failure to submit the Statement of Interest (SOI)
- Failure to submit Disclosure (DS) **forms** (*Refer to Section 3.5 Disclosures and Certifications*)
 - Vendor Disclosures (formerly Form A)
 - IPG Active Registration Vendor Disclosures (formerly Form B)
 - If proposing as a Team, required for all Team members

****Review 3.4.5 COMMON MISTAKES****



PSB SCHEDULE

1 June 16, 2025 - 4:30 pm | *Last day for Questions*

2 June 27, 2025 - 4:30 pm | *SOI's due, including all required attachments/exhibits*
All submittals for this PSB will be received through the Illinois Tollway's e-Builder PSB SOI process at: <https://app.e-builder.net/>.

3 August 2025 | *Selection Committee Meeting*

4 September 2025 | *Earliest Estimated Board Approval*

5 November 2025 | *Earliest Estimated Notice to Proceed*

SUBMITTAL OF QUESTIONS

- No questions will be taken during this pre-proposal meeting
- All questions related to this PSB must be submitted electronically through the Trimble Unity Construct SOI mailbox at PSB_25-2.02_Questions_and_RFIs@docs.e-builder.net
- PSB 25-2 Questions are due June 16, 2025, at 4:30 pm (CT)
- Answers will be addressed via addendum published on the Tollway Website and the Illinois eProcurement site: BidBuy

****NOTE – this presentation will be provided via Addendum.***





TOLLWAY COMPLIANCE REQUIREMENTS

TOLLWAY COMPLIANCE REQUIREMENTS

Required DBE/VOSB Forms

Exhibit F: VOSB Utilization Plan and Letter of Intent

Exhibit H: DBE Utilization Plan and Letter of Intent

Important information for both Exhibits:

- Prime Consultants must submit the Letter of Intent for its DBE and VOSB subconsultants including for a self-performing prime
- Please be specific about the scope(s) of work to be performed and associated NAICS/NIGP codes to demonstrate the performance of a commercially useful function

M/W/DBE and VOSB: Current Letter of Certification

Other Forms

DBE and VOSB Forms (if applicable): Good Faith Efforts

VETERAN OWNED/SMALL BUSINESS PROGRAM CERTIFICATIONS

**Veteran Owned Small Business (VOSB) or
Service-Disabled Veteran-Owned Small Business (SDVOSB) Certification**

State of Illinois Commission on Equity and Inclusion (CEI)

- Formerly known as Central Management Services (CMS)

51 percent owned and controlled by a qualified veteran living in Illinois



DBE CERTIFICATIONS

Certification Agencies

Illinois Unified Certification Program (IL UCP):

- Illinois Department of Transportation (IDOT)
- Chicago Transit Authority (CTA)
- Metra
- Pace
- City of Chicago

MBE/WBE Certifications

- City of Chicago
- Cook County

U.S. Small Business Administration, SBA 8(a) Certification





DIVERSITY PROGRAMS

DIVERSITY DEPARTMENT PROGRAMS

Resources for emerging businesses

Partnering for Growth/Reverse Partnering for Growth (P4G) Program

- Encourages prime consultants to assist D/M/WBE firms and veteran-owned small businesses
- Mentor and Protégé work on agreed-upon scope designed to help expand the Protégé's technical capabilities and develop skills needed to work with the Tollway
- Proposed relationships require **Exhibit E** with Statement of Interest

Technical Assistance Program

- Providers can assist with preparation of capabilities statements
- Review Statements of Interest
- Certification and prequalification application assistance
- Relationship building and marketing





PSB 25-2

ITEM 1: I-25-2018 – Design Services Upon Request (DUR)



Systemwide In-Road Electric Vehicle Charging

This is a DUR contract for tasks related to in-road electric vehicle charging installation on the Tollway System. Task orders under the blanket agreement will be negotiated and authorized by the Tollway on an as-needed basis.

Anticipated tasks include:

- Phase I assessment and evaluation
- Development of implementation strategy
- Phase II engineering for installation and construction
- Support for industry outreach and training
- Phase III support during construction

Prime firm must demonstrate a minimum of three years of transportation electrification planning or design experience including one year with dynamic wireless power transfer as related to transportation projects.

Contract duration anticipated to be approximately 60 months after authorization to proceed inclusive of completion of Phase III support services.

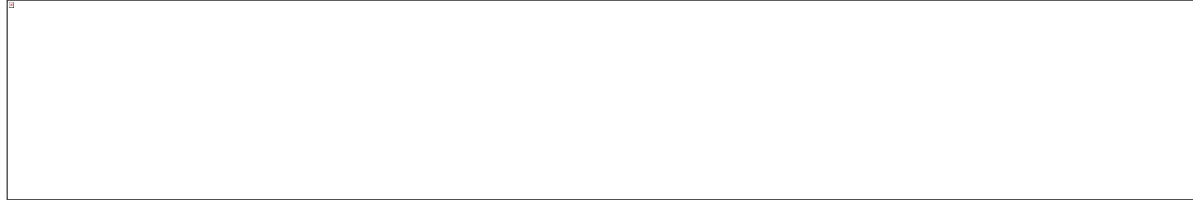


Upper limit of
compensation
is **\$3,500,000**

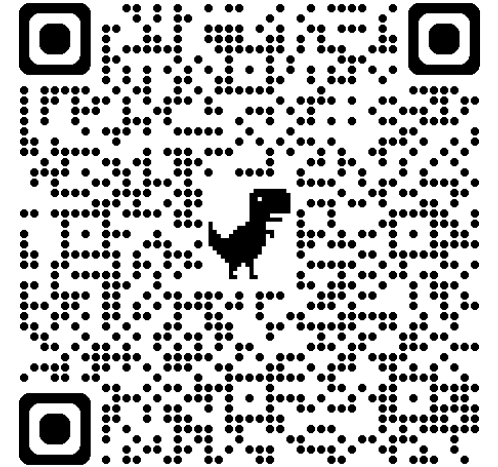
ITEM 1: I-25-2018 – Design Services Upon Request (DUR)



Systemwide In-Road Electric Vehicle Charging



SERIES 117: In-Road Electric Vehicle Charging: The Illinois
Tollway's Vision
Friday, June 6, 2025
11:00 a.m.



**SCAN ME
TO
REGISTER**

ITEM 2: RR-25-4992 - Design Services Upon Request (DUR)



Systemwide Design Services

This is a DUR contract for general Systemwide design. Task orders under the blanket agreement will be negotiated and authorized by the Tollway on an as-needed basis.

Anticipated tasks include Phase II design for:

- Pavement repairs
- Bridge repairs
- Drainage improvements
- Phase III support during construction
- On call and as-needed work related to the Tollway System

Contract duration anticipated to be approximately 60 months after authorization to proceed inclusive of completion of Phase III support services during construction.



Upper limit of compensation
is **\$3,000,000**

ITEM 3: RR-25-4993 – ITS Design Services Upon Request (DUR)



Systemwide Intelligent Transportation System Design Services

This is a DUR contract for Systemwide ITS design. Task orders under the blanket agreement will be negotiated and authorized by the Tollway on an as-needed basis.

Anticipated tasks include Phase II design for:

- CCTV camera installation and replacement
- Road Weather Information System (RWIS) repairs and replacement
- Weigh-in-Motion (WIM) repairs and replacement
- Phase III support during construction
- On call and as-needed work related to the Tollway System

Contract duration anticipated to be approximately 60 months after authorization to proceed inclusive of completion of Phase III support services during construction.



Upper limit of compensation
is **\$3,000,000**

ITEM 4: I-25-4769 - Construction Management Services



I-490 Roadway Construction from Foster Avenue to Devon Avenue

This is a Phase III engineering services contract for the I-490 corridor. Anticipated limits are from Foster Avenue to Devon Avenue.

The project includes I-490 mainline roadway construction and installation of new retaining walls, drainage facilities, earthwork and other miscellaneous work.

Anticipate one construction package with construction starting in early 2026 and substantial completion in 2027.



ITEM 5: I-25-4770 - Construction Management Services



I-490 Roadway and Bridge Construction from Taft Avenue to Foster Avenue

This is a Phase III engineering services contract for the I-490 corridor.

Anticipated limits are along existing IL 19 from Taft Avenue to Foster Avenue.

The project includes I-490 mainline roadway and bridge construction and installation of new retaining walls, drainage facilities, earthwork and other miscellaneous work.

Anticipate one construction package with construction starting in early 2026 and substantial completion in 2027.



ITEM 6: RR-25-2019 - Construction Management Services



Systemwide Bridge Rehabilitation

This is a Phase III engineering services contract for systemwide bridge rehabilitation contracts.

The project includes rehabilitation at one mainline and eight crossroad bridges on the Tri-State Tollway (I-94/I-294), Veterans Memorial Tollway (I-355) and Reagan Memorial Tollway (I-88).

Coordination required with various agencies including:

- DuPage County
- Lake County
- Cook County
- City of Naperville
- Village of Woodridge

Anticipate two construction packages with construction starting in 2026 and substantial completion in 2027.



ITEM 7: RR-25-2020 - Construction Management Services

Reagan Memorial Tollway (I-88) Bridge Rehabilitation

This is a Phase III engineering services contract for construction management of bridge rehabilitation contracts on the Reagan Memorial Tollway (I-88).

The project is anticipated to include superstructure replacement and rehabilitation at a total of 14 mainline and 21 crossroad bridges from Howland Creek (MP 44.5) to Steward Creek (MP 74.3).

Anticipate multiple construction packages with construction starting in 2026 and substantial completion in 2027.



US 52 and I-88 (Dixon)

ITEM 7: RR-25-2020 - Construction Management Services



Reagan Memorial Tollway (I-88) Bridge Rehabilitation

EB I-88 OVER STEWARD CREEK (BRIDGE 1201)	mainline	PUMP FACTORY ROAD (BRIDGE 1241)	crossroad
WB I-88 OVER STEWARD CREEK (BRIDGE 1202)	mainline	EB I-88 OVER THREE MILE CREEK (BRIDGE 1243)	mainline
BRUSH GROVE ROAD (BRIDGE 1203)	crossroad	WB I-88 OVER THREE MILE CREEK (BRIDGE 1244)	mainline
EB I-88 OVER BEACH CREEK (BRIDGE 1205)	mainline	HOYLE ROAD (BRIDGE 1245)	crossroad
WB I-88 OVER BEACH CREEK (BRIDGE 1206)	mainline	ATKINSON ROAD (BRIDGE 1247)	crossroad
THORPE ROAD (BRIDGE 1207)	crossroad	HARMON ROAD (BRIDGE 1249)	crossroad
BROOKLYN ROAD (BRIDGE 1209)	crossroad	BOLTMAN ROAD (BRIDGE 1251)	crossroad
MERIDIAN ROAD (BRIDGE 1211)	crossroad	NELSON ROAD (BRIDGE 1253)	crossroad
ASHTON ROAD (BRIDGE 1213)	crossroad	EB I-88 OVER US UPRR (BRIDGE 1255)	mainline
MIDWAY ROAD (BRIDGE 1215)	crossroad	WB I-88 OVER US UPRR (BRIDGE 1256)	mainline
REYNOLDS ROAD (BRIDGE 1217)	crossroad	EB I-88 OVER HOWLAND CREEK (BRIDGE 1257)	mainline
WHITNEY ROAD (BRIDGE 1219)	crossroad	WB I-88 OVER HOWLAND CREEK (BRIDGE 1258)	mainline
FRANKLIN ROAD (BRIDGE 1221)	crossroad		
ROCKY FORD ROAD (BRIDGE 1223)	crossroad		
ROBBINS ROAD (BRIDGE 1225)	crossroad		
NACHUSA ROAD (BRIDGE 1227)	crossroad		
RED BRICK ROAD (BRIDGE 1229)	crossroad		
BURKETT ROAD (BRIDGE 1231)	crossroad		
EB I-88 OVER US 52 (BRIDGE 1233)	mainline		
WB I-88 OVER US 52 (BRIDGE 1234)	mainline		
DIXON RAMPS A & B (BRIDGE 1235)	crossroad		
EB I-88 OVER IL 26 (BRIDGE 1237)	mainline		
WB I-88 OVER IL 26 (BRIDGE 1238)	mainline		

QUESTIONS

Questions may be sent to:

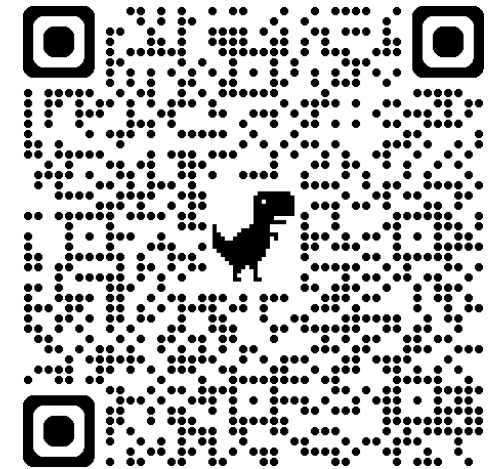
PSB_25-2.01_Questions_and_RFIs@docs.e-builder.net

THANK YOU FOR YOUR PARTICIPATION

ITEM 1: I-25-2018 Systemwide In-Road EV Charging Webinar



SERIES 117: In-Road Electric Vehicle Charging: The Illinois
Tollway's Vision
Friday, June 6, 2025
11:00 a.m.



**SCAN ME
TO
REGISTER**



THANK YOU FOR
YOUR PARTICIPATION



Summary														
Meeting title	P&S 25-2 Optional Pre-Proposal Meeting													
Registration page views	94													
Registered participants	94													
Canceled registrations	0													
Attended participants	96													
Start time	6/06/25, 8:10:10 AM													
End time	6/06/25, 9:51:04 AM													
Meeting duration	1h 20m 54s													
Average attendance time	27m 55s													
2. Participants														
Name	First Join	Last Leave	In-Meeting Duration	Email	Participant ID (UPN)	Role	Registration First Name	Registration Last Name	Registration Email	Registration Time	Registration Status	Job title	Organization	Phone Number
Ramos, Vanessa	6/06/25, 8:55:58 AM	6/06/25, 9:31:04 AM	35m 6s	Vramos@getpass.com	Vramos@getpass.com	Organizer								
Myers, Linda	6/06/25, 8:56:23 AM	6/06/25, 9:30:12 AM	33m 48s	LMyers@getpass.com	LMyers@getpass.com	Organizer								
Williams, Cynthia	6/06/25, 8:56:26 AM	6/06/25, 9:30:20 AM	33m 54s	CHWilliams@getpass.com	CHWilliams@getpass.com	Organizer								
Banda, Vincent	6/06/25, 8:57:40 AM	6/06/25, 9:30:14 AM	32m 34s	VBanda@getpass.com	VBanda@getpass.com	Organizer								
Hall, Danna	6/06/25, 9:04:13 AM	6/06/25, 9:30:35 AM	26m 21s	DHall@getpass.com	DHall@getpass.com	Organizer								
Durkin, Laura	6/06/25, 9:05:12 AM	6/06/25, 9:30:18 AM	25m 5s	LDurkin@getpass.com	LDurkin@getpass.com	Organizer								
Liu, Meiye	6/06/25, 9:11:09 AM	6/06/25, 9:30:15 AM	19m 6s	mliu@getpass.com	mliu@getpass.com	Organizer								
Dami (SDI) (Unverified)	6/06/25, 8:10:37 AM	6/06/25, 8:46:14 AM	38m 37s			Attendee	Damila	Ajao	dajao@sdiengr.com	6/04/25, 4:21:22 PM	Registered		Structure Designs, Inc., d/b/a: SDIENGR CORP.	3125519780
James Williams (External)	6/06/25, 8:41:20 AM	6/06/25, 9:30:22 AM	34m 11s	jwilliams@abnacr.org	jwilliams@abnacr.org	Attendee	James	Williams	jwilliams@abnacr.org	6/05/25, 9:18:34 AM	Registered	Proposal Writer	ABNA Engineering	
Shawon Carlstrom (External)	6/06/25, 8:48:29 AM	6/06/25, 9:30:19 AM	41m 49s	scarlstom@boronengineeringinc.com	scarlstom@boronengineeringinc.com	Attendee	Shawon	Carlstrom	scarlstom@boronengineeringinc.com	6/05/25, 11:19:03 AM	Registered	Executive Vice President	Orion Engineers	6303109818
Dami (SDI) (Unverified)	6/06/25, 8:51:06 AM	6/06/25, 9:01:12 AM	10m 5s			Attendee	Damila	Ajao	dajao@sdiengr.com	6/06/25, 4:21:22 PM	Registered	Structure Designs, Inc., d/b/a: SDIENGR CORP.	3125519780	
Prohammer, Valerie	6/06/25, 8:51:07 AM	6/06/25, 9:30:07 AM	38m 59s	VProhammer@getpass.com	VProhammer@getpass.com	Attendee	Valerie	Prohammer	vprohammer@getpass.com	6/06/25, 8:46:44 AM	Registered	Contract Specialist	Illinois Tollway	331.999.3488
Mondel, Jim	6/06/25, 8:51:11 AM	6/06/25, 9:30:10 AM	38m 58s	Jimondel@getpass.com	Jimondel@getpass.com	Attendee	Jim	Mondel	jmondel@getpass.com	6/06/25, 10:55:45 AM	Registered	Senior Contract Negotiator	Illinois Tollway CA	331.613.0562
Dagmar Cameron (External)	6/06/25, 8:53:25 AM	6/06/25, 9:30:34 AM	37m 9s	dagmar.cameron@perate-clark.com	dagmar.cameron@perate-clark.com	Attendee	Dagmar	Cameron	dagmar.cameron@perate-clark.com	6/04/25, 5:45:42 PM	Registered	Marketing Coordinator	Perate-Clark, LLC	3123934762
Emily Kiemptner (External)	6/06/25, 8:53:42 AM	6/06/25, 9:30:07 AM	32m 6s	ekiemptner@siaginc.com	ekiemptner@siaginc.com	Attendee	Emily	Kiemptner	ekiemptner@siaginc.com	6/05/25, 8:11:43 AM	Registered	Proposal Coordinator	Singh and Associates, Inc.	312629240
LuWanda Jones (External)	6/06/25, 8:54:13 AM	6/06/25, 9:30:57 AM	30m 43s	LJones@abnacr.org	LJones@abnacr.org	Attendee	LuWanda	Jones	LJones@abnacr.org	6/06/25, 12:58:30 PM	Registered	VP BD/Marketing	ABNA	773-881-4788
Greg Skukel (External)	6/06/25, 8:55:26 AM	6/06/25, 9:29:59 AM	34m 32s	gsukel@bowman.com	gsukel@bowmanconsulting.com	Attendee	Greg	Skukel	gsukel@bowman.com	6/06/25, 8:49:04 AM	Registered	Principal	Bowman	630.7866.723
Wes Brazas	6/06/25, 8:55:42 AM	6/06/25, 9:30:39 AM	34m 56s	wes.brazas@amerseengineeringinc.com	wes.brazas@amerseengineeringinc.com	Attendee	Wesley	Brazas	wes.brazas@amerseengineeringinc.com	6/06/25, 8:00:19 AM	Registered	Senior Project Manager	AMES Engineering Inc.	630-737-1987
Emma Foley (External)	6/06/25, 8:55:45 AM	6/06/25, 9:30:09 AM	34m 23s	efoley@descotinc.com	efoley@descotinc.com	Attendee	Emma	Foley	efoley@descotinc.com	6/04/25, 4:06:56 PM	Registered	Proposal Specialist	eFControls, Inc.	
Olaekan Ogedengbe (Unverified)	6/06/25, 8:56:09 AM	6/06/25, 9:30:36 AM	34m 26s			Attendee	Olaekan Ogedengbe	Olaekan Ogedengbe	ogedengbe@sdiengr.com	6/06/25, 8:46:49 AM	Registered	Engineering Department Manager	Structure Designs, Inc.	(312) 551 - 9780
Truman Price (External)	6/06/25, 8:56:16 AM	6/06/25, 9:31:04 AM	34m 48s	truman.price@kadengineeringgroup.com	truman.price@kadengineeringgroup.com	Attendee	Truman	Price	truman.price@kadengineeringgroup.com	6/05/25, 7:26:40 AM	Registered	Senior Project Manager	KAD Engineering	(830) 780-7402
Hacking, Kati	6/06/25, 8:56:31 AM	6/06/25, 9:30:08 AM	33m 37s	KHacking@getpass.com	KHacking@getpass.com	Attendee	Kathi	Hacking	khacking@getpass.com	6/04/25, 2:30:01 PM	Registered	SCN	Tollway	6302976075
17082727333	6/06/25, 8:56:45 AM	6/06/25, 9:31:04 AM	34m 18s			Attendee								
16302976075	6/06/25, 8:56:49 AM	6/06/25, 9:30:10 AM	33m 21s			Attendee								
1732127093 (Unverified)	6/06/25, 8:57:03 AM	6/06/25, 9:30:41 AM	33m 37s			Attendee								
Dan Tilges (External)	6/06/25, 8:57:08 AM	6/06/25, 9:31:04 AM	33m 56s	tilgesd@materialsolutionlaboratory.com/mcs	tilgesd@materialsolutionlaboratory.com/mcs	Attendee	Daniel	Tilges	tilgesd@msl-corp.com	6/04/25, 4:21:26 PM	Registered	President	MSL	847.404-9253
Spencer, Seanica	6/06/25, 8:57:11 AM	6/06/25, 9:30:11 AM	32m 59s	SSpencer@getpass.com	SSpencer@getpass.com	Presenter								
Reed, Wayne (External)	6/06/25, 8:57:12 AM	6/06/25, 9:30:08 AM	32m 55s	Wayne.Reed@atkinsrealis.com	Wayne.Reed@atkinsrealis.com	Attendee	Wayne	Reed	wayne.reed@atkinsrealis.com	6/06/25, 7:30:55 PM	Registered	Division Manager	AtkinsRealis	9198716177
Drozdz, Laura	6/06/25, 8:57:12 AM	6/06/25, 9:30:14 AM	33m 1s	LDrozdz@getpass.com	LDrozdz@getpass.com	Attendee	Laura	Drozdz	ldrozdz@getpass.com	6/05/25, 10:48:22 AM	Registered	Contract Analyst	Tollway	630.796-8658
Zeman, Benjamin	6/06/25, 8:57:13 AM	6/06/25, 9:30:07 AM	33m 23s	Benjamin.Zeman@thinc.com	benjamin.zeman@thinc.com	Attendee	Benjamin	Zeman	benjamin.zeman@thinc.com	6/04/25, 4:08:12 PM	Registered	Project Manager	HCR	773-217-2093
Bennett, Kristin	6/06/25, 8:57:24 AM	6/06/25, 9:30:07 AM	32m 42s	kbennett@getpass.com	kbennett@getpass.com	Attendee	Kristen	Bennett	kbennett@getpass.com	6/06/25, 8:24:31 AM	Registered	General Manager	Illinois Tollway	(630) 341-6800
Tina Batlin (External)	6/06/25, 8:57:29 AM	6/06/25, 9:30:06 AM	32m 37s	tbatlin@gccos.net	tbatlin@gccos.net	Attendee	Tina	Batlin	tbatlin@gccos.net	6/05/25, 9:52:49 AM	Registered	Marketing Admin Manager	Gonzales Companies, LLC	
Ted Lachus (External)	6/06/25, 8:57:35 AM	6/06/25, 9:30:12 AM	32m 37s	tlachus@gccos.net	tlachus@gccos.net	Attendee	Ted	Lachus	tlachus@gccos.net	6/06/25, 9:21:39 AM	Registered	Regional Manager	Gonzales Companies, LLC	312-972-9770
Trisha Novosel (External)	6/06/25, 8:57:49 AM	6/06/25, 9:30:06 AM	32m 17s	tnovosel@sga.com	tnovosel@sga.com	Attendee	Trisha	Novosel	tnovosel@sga.com	6/04/25, 4:11:52 PM	Registered	Sr. Marketing Coordinator	SQN Associates, LLC	
Jason Michel (External)	6/06/25, 8:58:00 AM	6/06/25, 9:30:11 AM	32m 11s	jrmichel@gccos.net	jrmichel@gccos.net	Attendee	Jason	Michel	jrmichel@gccos.net	6/06/25, 11:50:40 AM	Registered	Resident Engineer	Gonzales Companies	847.967.764
Spencer, Takesha	6/06/25, 8:58:37 AM	6/06/25, 9:30:07 AM	31m 30s	TSpencer@getpass.com	TSpencer@getpass.com	Attendee	Takesha	Spencer	tspencer@getpass.com	6/06/25, 10:48:01 AM	Registered	Contract Specialist	Tollway	3123151568
Dan Bruckelmeyer (External)	6/06/25, 8:58:54 AM	6/06/25, 9:30:40 AM	31m 45s	dbruckelmeyer@bba-inc.com	dbruckelmeyer@bba-inc.com	Attendee	Dan	Bruckelmeyer	dbruckelmeyer@bba-inc.com	6/06/25, 8:23:07 AM	Registered	President/CEO	BLA, Inc.	630.4386.400
Karahalos, Alexander	6/06/25, 8:58:57 AM	6/06/25, 9:30:31 AM	31m 34s	akarahalos@getpass.com	akarahalos@getpass.com	Presenter								
Scott VanDerAa (External)	6/06/25, 8:59:01 AM	6/06/25, 9:30:16 AM	31m 18s	SVanderAa@ccerasolutions.com	SVanderAa@ccerasolutions.com	Attendee	Scott	VanDerAa	svanderaa@ccerasolutions.com	6/06/25, 12:44:53 PM	Registered	Senior Project Manager	CDK Solutions	312.972-1920
Arnold Kassemam (DANA) (Unverified)	6/06/25, 9:59:09 AM	6/06/25, 9:30:15 AM	31m 15s	AKassemam@danaconsultants.com	AKassemam@danaconsultants.com	Attendee	Arnold	Kassemam	akassemam@danaconsultants.com	6/06/25, 12:31:42 PM	Registered	Senior Transportation Planner	DANA Consultants, Inc.	773.426.3759
Sydney Dryer (External)	6/06/25, 9:59:05 AM	6/06/25, 9:31:04 AM	31m 59s	sydrier@geconultic.com	sydrier@geconultic.com	Attendee	Sydney	Dryer	sydrier@geconultic.com	6/06/25, 3:56:40 PM	Registered	Marketing/Office Coordinator	Gasperc Eberts Consulting	8158860555
Mohammed Rashied (External)	6/06/25, 9:59:10 AM	6/06/25, 9:30:28 AM	31m 17s	mrashed@OBSERLIN.COM	mrashed@OBSERLIN.COM	Attendee	Mohammed	Rashied	mrashed@OBSERLIN.COM	6/05/25, 12:16:16 PM	Registered	Director of Electrical Operations	DB Sterlin Consultants, Inc.	773-552-0517
Cuenca, Isaac	6/06/25, 9:59:14 AM	6/06/25, 9:31:04 AM	31m 49s	Cuenca@getpass.com	Cuenca@getpass.com	Attendee	Isaac	Cuenca	cuenca@getpass.com	6/06/25, 8:54:43 AM	Registered	Contract specialist	331.999.5486	
John Yonias (External)	6/06/25, 9:59:22 AM	6/06/25, 9:30:09 AM	30m 43s	jyonias@colinseng.com	jyonias@colinseng.com	Attendee	John	Yonias	jyonias@colinseng.com	6/06/25, 4:05:39 PM	Registered	Vice President	Colins Engineers, Inc.	312.285.1119
Jason Johnson (External)	6/06/25, 9:59:33 AM	6/06/25, 9:30:14 AM	30m 40s	jjohnson@sga.com	jjohnson@sga.com	Attendee	Jason	Johnson	jjohnson@sga.com	6/06/25, 11:39:48 AM	Registered	Director of Transportation	SQN Associates	312.307.9633
Nowak, Kate (External)	6/06/25, 9:59:41 AM	6/06/25, 9:30:08 AM	30m 26s	Kate.Nowak@atkinsrealis.com	Kate.Nowak@atkinsrealis.com	Attendee	Kate	Nowak	kate.nowak@atkinsrealis.com	6/06/25, 4:18:52 PM	Registered	Director	AtkinsRealis	312.4202658
Pozzessere, Kari (External)	6/06/25, 9:59:47 AM	6/06/25, 9:30:09 AM	30m 22s	Kari.Pozzessere@aeacom.com	Kari.Pozzessere@aeacom.com	Attendee	Kari	Pozzessere	kari.pozzessere@aeacom.com	6/04/25, 4:16:54 PM	Registered	Proposal Specialist	AECOM	203.417.0858
Harrington, Jennifer (External)	6/06/25, 9:59:53 AM	6/06/25, 9:30:08 AM	30m 15s	JHarrington@J-W.com	JHarrington@J-W.com	Attendee	Jennifer	Harrington	Jharrington@j-w.com	6/04/25, 4:11:17 PM	Registered	Senior Marketing Specialist	Farmsworth Group, Inc.	309.663.8435
JL	6/06/25, 9:59:59 AM	6/06/25, 9:30:11 AM	30m 15s	Jay.Schmid@getpass.com	Jay.Schmid@getpass.com	Attendee	Jay	Schmid	jay.schmid@getpass.com	6/06/25, 8:08:09 PM	Registered	Sr. Project Manager	Lakeshore Engineering	773.930.0686
Mowczek, Jacyln (External)	6/06/25, 9:00:07 AM	6/06/25, 9:30:39 AM	29m 24s	jmozewicz@valdeseng.com	jmozewicz@valdeseng.com	Attendee	Jacyln	Mowczek	jmozewicz@valdeseng.com	6/05/25, 1:34:39 PM	Registered			
Adenike Fasanya-Osalaja (External)	6/06/25, 9:00:08 AM	6/06/25, 9:31:04 AM	30m 56s	Afasalaja@abnacr.org	Afasalaja@abnacr.org	Attendee	Adenike	Fasanya-Osalaja	afasalaja@abnacr.org	6/06/25, 12:30:25 PM	Registered	Business Development Specialist	ABNA Engineering	708.527.0992
Reilly, Greg (External)	6/06/25, 9:00:09 AM	6/06/25, 9:23:41 AM	12m	Greg.Reilly@aeacom.com	Greg.Reilly@aeacom.com	Attendee	Greg	Reilly	greg.reilly@aeacom.com	6/05/25, 3:30:15 PM	Registered			
Aleksandra Tade (External)	6/06/25, 9:00:29 AM	6/06/25, 9:30:09 AM	29m 54s	ATade@forconultic.com	ATade@forconultic.com	Attendee	Aleksandra	Tade	atade@forconultic.com	6/06/25, 12:48:24 PM	Registered	Director	SBF Consulting Group	
Kat Porter (External)	6/06/25, 9:00:16 AM	6/06/25, 9:30:04 AM	29m 48s	kporter@bdg-america.com	kporter@bdg-america.com	Attendee	Kat	Porter	kporter@bdg-america.com	6/06/25, 4:09:28 PM	Registered	Sr. Marketing Coordinator	Delta Engineering Group, LLC	(773) 420-6695
Perez, Lorena	6/06/25, 9:00:30 AM	6/06/25, 9:21:24 AM	29m 54s	LPerez@getpass.com	LPerez@getpass.com	Attendee	Lorena	Perez	lperez@getpass.com	6/06/25, 8:56:17 AM	Registered			
Brown, Katie (External)	6/06/25, 9:00:30 AM	6/06/25, 9:30:06 AM	29m 36s	kbrown@hwochner.com	kbrown@hwochner.com	Attendee	Katie	Brown	kbrown@hwochner.com	6/06/25, 4:06:25 PM	Registered	Senior Proposal Specialist	H.W. Lochner, Inc.	858.231.4552
Smith, Brian (Chicago) (External)	6/06/25, 9:00:31 AM	6/06/25, 9:30:00 AM	29m 29s	brian.smith@aeacom.com	brian.smith@aeacom.com	Attendee	Brian	Smith	brian.smith@aeacom.com	6/06/25, 8:47:43 AM	Registered	AWP	AECOM	708.936.8434
Standish, Tony	6/06/25, 9:00:34 AM	6/06/25, 9:30:08 AM	29m 24s	Anthony.Standish@trand.com	Tony.Standish@trand.com	Attendee	Anthony	Standish	tony.standish@trand.com	6/06/25, 9:19:55 AM	Registered	Director of Practice - Transportation	Strand Associates, Inc.	815.744.0200
Howe, Ruth	6/06/25, 9:00:39 AM	6/06/25, 9:20:21 AM	29m 41s	RAHowe@getpass.com	RAHowe@getpass.com	Attendee	Ruth	Howe	rahowe@getpass.com	6/06/25, 8:59:25 AM	Registered	Contract Analyst	Illinois Tollway	630.473.0789
Hukic-Hamzic, Emina	6/06/25, 9:00:46 AM	6/06/25, 9:30:34 AM	29m 48s	EHukic-Hamzic@getpass.com	EHukic-Hamzic@getpass.com	Attendee	Emina	Hukic-Hamzic	ehukic-hamzic@getpass.com	6/06/25, 8:59:54 AM	Registered	Business Analyst	Illinois Tollway	630.434.4999
Brian Castro (External)	6/06/25, 9:00:57 AM	6/06/25, 9:30:14 AM	29m 17s	bcastro@aaengineering.net	bcastro@aaengineering.net	Attendee	Brian	Castro	bcastro@aaengineering.net	6/04/25, 4:21:59 PM	Registered	Chief Executive Officer	AAA Engineering,	

Vick, Marlene	6/06/25, 9:24:42 AM	6/06/25, 9:30:24 AM	5m 41s	mivick@getpass.com	mivick@getpass.com	Attendee	Marlene	Vick	mivick@getpass.com	6/06/25, 9:03:09 AM	Registered		Tollway
Krista Thoenes (External)	6/06/25, 9:25:32 AM	6/06/25, 9:30:17 AM	4m 45s	KThoenes@infrastructure-eng.com	KThoenes@infrastructure-eng.com	Attendee	Krista	Thoenes	kthoenes@infrastructure-eng.com	6/06/25, 9:24:21 AM	Registered	Marketing Manager	Infrastructure Engineering Inc.
13125044401 (Unverified)	6/06/25, 9:25:56 AM	6/06/25, 9:30:00 AM	4m 4s			Attendee							
							Cheryl	Durante	cheryl.durante@terracon.com	6/04/25, 4:06:54 PM	Registered	BD	Terracon
							Brenda	Karhoff	brenda.karhoff@tgc-llc.com	6/04/25, 4:07:27 PM	Registered	President	Garza Karhoff Engineering, LLC
							Colleen	Miller	cmiller@singhinc.com	6/04/25, 4:12:34 PM	Registered	Chief Business Development Officer	SINGH & Associates, Inc.
							AJ	Jimenez	aj.jimenez@theadhunt.com	6/04/25, 4:56:23 PM	Registered	Senior Marketing Coordinator	Mead & Hunt
							Scott	Cain	scott.cain@genesias.com	6/04/25, 5:08:56 PM	Registered		Atlas Technical Consultants
							Ray	Arias	arias@arias.com	6/04/25, 6:58:03 PM	Registered	Managing Partner	Arias Information Solutions LLC
							Lien	Dastgir	lien.dastgir@kadengineeringgroup.com	6/04/25, 10:22:27 PM	Registered	President	KAD Engineering PLLC
							Mike	Valentino	mvalentino@getpass.com	6/05/25, 11:51:21 AM	Registered		
							Alexis	Guerrero	alexis.guerrero@tylin.com	6/05/25, 12:24:15 PM	Registered		TYLIN
							Alexander	Karahalos	akarahalos@getpass.com	6/05/25, 1:14:32 PM	Registered	Business Analyst of Diversity and Strategic	Illinois Tollway
							Vincent	Banda	vbanda@getpass.com	6/05/25, 1:49:53 PM	Registered	Senior Contract Admin	Illinois Tollway
							Tiffany	Merrill	tmerrill@getpass.com	6/05/25, 1:58:10 PM	Registered	Senior Contract Negotiator	Illinois Tollway
							Timothy	Coleman	tcoleman@getpass.com	6/06/25, 8:52:14 AM	Registered	DBE Program Manager	Illinois Tollway Authority
							Isaac	Cuenca	icuenca11@gmail.com	6/06/25, 9:54:00 AM	Registered	Contract specialist	3113993495
							Paul	Gregoire	paul.gregoire@gec-group.com	6/06/25, 9:22:06 AM	Registered	Chief Operating Officer	Globetrotters Engineering
							Joel	Kaufman	marketing@agroupbltd.com	6/06/25, 9:30:48 AM	Registered		Atlas Engineering Group

In-Meeting Activities					
Name	Join Time	Leave Time	Duration	Email	Role
James, Vanessa	6/06/25, 8:55:58 AM	6/06/25, 9:31:04 AM	35m 6s	VJames@getpass.com	Organizer
Myers, Linda	6/06/25, 8:56:23 AM	6/06/25, 9:30:12 AM	33m 48s	LMyers@getpass.com	Organizer
Williams, Cynthia	6/06/25, 8:56:26 AM	6/06/25, 9:30:20 AM	33m 54s	CWilliams@getpass.com	Organizer
Banda, Vincent	6/06/25, 8:57:40 AM	6/06/25, 9:30:14 AM	32m 34s	VBanda@getpass.com	Organizer
Hall, Dana	6/06/25, 9:04:13 AM	6/06/25, 9:30:35 AM	26m 21s	DHall@getpass.com	Organizer
Durkin, Laura	6/06/25, 9:05:12 AM	6/06/25, 9:30:18 AM	25m 5s	LDurkin@getpass.com	Organizer
Liu, Mei-yu	6/06/25, 9:11:09 AM	6/06/25, 9:30:15 AM	19m 6s	mliu@getpass.com	Organizer
Dami (SDI) (Unverified)	6/06/25, 8:10:37 AM	6/06/25, 8:48:14 AM	38m 37s		Attendee
James Williams (External)	6/06/25, 8:41:20 AM	6/06/25, 8:41:25 AM	4s	jwilliams@abnacorp.com	Attendee
James Williams (External)	6/06/25, 8:56:14 AM	6/06/25, 9:30:22 AM	34m 7s	jwilliams@abnacorp.com	Attendee
Shawon Carlstrom (External)	6/06/25, 8:48:29 AM	6/06/25, 9:30:19 AM	41m 49s	scarlstrom@jorionengineeringllc.com	Attendee
Dami (SDI) (Unverified)	6/06/25, 8:51:06 AM	6/06/25, 9:01:12 AM	10m 5s		Attendee
Prohman, Valerie	6/06/25, 8:51:07 AM	6/06/25, 9:30:07 AM	38m 59s	VProhman@getpass.com	Attendee
Mondel, Jim	6/06/25, 8:51:11 AM	6/06/25, 9:30:10 AM	38m 58s	JMondel@getpass.com	Attendee
Dagmar Cameron (External)	6/06/25, 8:53:25 AM	6/06/25, 9:30:34 AM	37m 9s	dagmar.cameron@gersalte-clark.com	Attendee
Emily Klemptner (External)	6/06/25, 8:53:42 AM	6/06/25, 8:54:41 AM	59s	eklemptner@singhinc.com	Attendee
Emily Klemptner (External)	6/06/25, 8:59:00 AM	6/06/25, 9:30:07 AM	31m 7s	eklemptner@singhinc.com	Attendee
LuWanda Jones (External)	6/06/25, 8:54:13 AM	6/06/25, 9:30:57 AM	36m 43s	LJones@abnacorp.com	Attendee
Greg Stukel (External)	6/06/25, 8:55:26 AM	6/06/25, 9:29:59 AM	34m 32s	gstukel@bowman.com	Attendee
Wes Brazas	6/06/25, 8:55:42 AM	6/06/25, 9:30:39 AM	34m 56s	wes.brazas@amesengineeringinc.com	Attendee
Emma Foley (External)	6/06/25, 8:55:45 AM	6/06/25, 9:30:09 AM	34m 23s	efoley@descotest.com	Attendee
Qualean Oquendo (Unverified)	6/06/25, 8:56:09 AM	6/06/25, 9:30:36 AM	34m 26s		Attendee
Truman Price (External)	6/06/25, 8:56:16 AM	6/06/25, 9:31:04 AM	34m 48s	truman.price@kadengineeringgroup.com	Attendee
Hacking, Kati	6/06/25, 8:56:31 AM	6/06/25, 9:30:08 AM	33m 37s	KHacking@getpass.com	Attendee
17089277333	6/06/25, 8:56:45 AM	6/06/25, 9:31:04 AM	34m 18s		Attendee
1630297675	6/06/25, 8:56:49 AM	6/06/25, 9:30:10 AM	33m 21s		Attendee
17732172083 (Unverified)	6/06/25, 8:57:03 AM	6/06/25, 9:30:41 AM	33m 37s		Attendee
Dan Tittes (External)	6/06/25, 8:57:08 AM	6/06/25, 9:31:04 AM	33m 56s	dtittes@materialsolutionslaboratory.omicron.com	Attendee
Spencer, Seannica	6/06/25, 8:57:11 AM	6/06/25, 9:30:11 AM	32m 59s	SSpencer@getpass.com	Presenter
Reed, Wayne (External)	6/06/25, 8:57:12 AM	6/06/25, 9:30:08 AM	32m 55s	Wayne.Reed@atkinsrealis.com	Attendee
Drosd, Liane	6/06/25, 8:57:12 AM	6/06/25, 9:30:14 AM	32m 1s	LDrosd@getpass.com	Attendee
Zemsa, Benjamin	6/06/25, 8:57:13 AM	6/06/25, 9:30:37 AM	32m 23s	Benjamin.Zemsa@ibdninc.com	Attendee
Bennett, Kristen	6/06/25, 8:57:24 AM	6/06/25, 9:30:07 AM	32m 42s	kbennett@getpass.com	Attendee
Tina Ballin (External)	6/06/25, 8:57:29 AM	6/06/25, 9:30:06 AM	32m 37s	tballin@gccos.net	Attendee
Ted Lachus (External)	6/06/25, 8:57:35 AM	6/06/25, 9:30:12 AM	32m 37s	tachus@gccos.net	Attendee
Trisha Novoset (External)	6/06/25, 8:57:49 AM	6/06/25, 9:30:09 AM	32m 17s	tnovoset@sgna.com	Attendee
Jason Michel (External)	6/06/25, 8:58:00 AM	6/06/25, 9:30:11 AM	32m 11s	jmichel@gccos.net	Attendee
Spencer, Takesha	6/06/25, 8:58:37 AM	6/06/25, 9:30:07 AM	31m 30s	TSpencer@getpass.com	Attendee
Dan Bruckertmeyer (External)	6/06/25, 8:58:54 AM	6/06/25, 9:30:40 AM	31m 45s	dbruckertmeyer@bba-inc.com	Attendee
Karahalos, Alexander	6/06/25, 8:58:57 AM	6/06/25, 9:30:31 AM	31m 34s	akarahalos@getpass.com	Presenter
Scott Vanderka (External)	6/06/25, 8:58:57 AM	6/06/25, 9:30:16 AM	31m 18s	SVanderka@jccersolutions.com	Attendee
Arnold Kasemann / DAMA (Unverified)	6/06/25, 8:59:00 AM	6/06/25, 9:30:15 AM	31m 15s		Attendee
Sydney Dryer (External)	6/06/25, 8:59:05 AM	6/06/25, 9:31:04 AM	31m 59s	sdryer@gecosultitc.com	Attendee
Mohammed Rashid (External)	6/06/25, 8:59:10 AM	6/06/25, 9:30:28 AM	31m 17s	mrashid@dsterlin.com	Attendee
Cuenca, Isaac	6/06/25, 8:59:14 AM	6/06/25, 9:31:04 AM	31m 49s	ICuenca@getpass.com	Attendee
John Yonan (External)	6/06/25, 8:59:22 AM	6/06/25, 9:30:08 AM	30m 46s	yonan@collinsengr.com	Attendee
Jason Johnson (External)	6/06/25, 8:59:33 AM	6/06/25, 9:30:14 AM	30m 40s	jjohnson@sgna.com	Attendee
Nowak, Kate (External)	6/06/25, 8:59:41 AM	6/06/25, 9:30:08 AM	30m 26s	Kate.Nowak@atkinsrealis.com	Attendee
Pozzessere, Kari (External)	6/06/25, 8:59:47 AM	6/06/25, 9:30:09 AM	30m 22s	Kari.Pozzessere@seacom.com	Attendee
Harrington, Jennifer (External)	6/06/25, 9:00:02 AM	6/06/25, 9:30:08 AM	30m 15s	jharrington@F-W.com	Attendee
J/S	6/06/25, 9:00:05 AM	6/06/25, 9:30:11 AM	30m 5s		Attendee
Mozwecz, Jaclyn (External)	6/06/25, 9:00:07 AM	6/06/25, 9:08:48 AM	8m 40s	jmozwecz@valdeseng.com	Attendee
Mozwecz, Jaclyn (External)	6/06/25, 9:09:54 AM	6/06/25, 9:30:39 AM	20m 44s	jmozwecz@valdeseng.com	Attendee
Alexniea Fasana-Ortega (External)	6/06/25, 9:00:08 AM	6/06/25, 9:31:04 AM	30m 59s	AOrtega@abnacorp.com	Attendee
Reilly, Greg (External)	6/06/25, 9:09:09 AM	6/06/25, 9:03:32 AM	3m 22s	Greg.Reilly@seacom.com	Attendee
Reilly, Greg (External)	6/06/25, 9:15:03 AM	6/06/25, 9:23:41 AM	8m 38s	Greg.Reilly@seacom.com	Attendee
Aleksandra Tadic (External)	6/06/25, 9:00:12 AM	6/06/25, 9:30:06 AM	29m 54s	ATadic@starcconsulting.com	Attendee
Kari Porter (External)	6/06/25, 9:00:16 AM	6/06/25, 9:30:04 AM	29m 48s	kporter@idg-america.com	Attendee
Perez, Lorena	6/06/25, 9:00:30 AM	6/06/25, 9:21:24 AM	29m 54s	LPerez@getpass.com	Attendee
Brown, Katie (External)	6/06/25, 9:00:30 AM	6/06/25, 9:30:06 AM	29m 36s	kbrown@halochner.com	Attendee
Smith, Brian (Chicago) (External)	6/06/25, 9:00:31 AM	6/06/25, 9:30:00 AM	29m 29s	brian.smith@seacom.com	Attendee
Standish, Tony	6/06/25, 9:00:34 AM	6/06/25, 9:30:08 AM	29m 34s	Anthony.Standish@starc.com	Attendee
Howe, Ruth	6/06/25, 9:00:39 AM	6/06/25, 9:30:21 AM	29m 41s	RAHowe@getpass.com	Attendee
Hukic-Hametic, Emina	6/06/25, 9:00:45 AM	6/06/25, 9:30:34 AM	29m 48s	EHukic-Hametic@getpass.com	Attendee
Brian Castro (External)	6/06/25, 9:00:57 AM	6/06/25, 9:30:14 AM	29m 17s	bcastro@seagreening.net	Attendee
Marissa Martin (External)	6/06/25, 9:01:10 AM	6/06/25, 9:30:21 AM	29m 17s	mmartin@geacoustics.com	Attendee
1830743836 (Unverified)	6/06/25, 9:01:11 AM	6/06/25, 9:30:25 AM	29m 13s		Attendee
Justin Cook (External)	6/06/25, 9:01:12 AM	6/06/25, 9:30:06 AM	28m 54s	justin.cook@intellidat.com	Attendee
Holweda, Mark (External)	6/06/25, 9:01:18 AM	6/06/25, 9:30:10 AM	28m 52s	mholweda@lylto.com	Attendee
Shawon Carlstrom (External)	6/06/25, 9:01:26 AM	6/06/25, 9:30:16 AM	28m 29s	scarlstrom@seacom.com	Attendee
Keil-Hoggenger (External)	6/06/25, 9:01:28 AM	6/06/25, 9:30:03 AM	28m 34s	KEilHoggenger@abnacorp.com	Attendee
Brain Pawula (External)	6/06/25, 9:01:39 AM	6/06/25, 9:30:08 AM	28m 29s	bpawula@borenshtrlin.com	Attendee
Stephanie Fava (External)	6/06/25, 9:02:00 AM	6/06/25, 9:30:08 AM	28m 8s	stephanie.fava@getpass.com	Attendee
Ryan Jangar	6/06/25, 9:02:10 AM	6/06/25, 9:30:03 AM	27m 53s	Ryan.Jangar@ieep.com	Attendee
1813939396 (Unverified)	6/06/25, 9:02:29 AM	6/06/25, 9:02:29 AM	27m 27s		Attendee
Kelly, Sherita	6/06/25, 9:02:24 AM	6/06/25, 9:30:07 AM	27m 43s	skelly@getpass.com	Attendee
Dami (Unverified)	6/06/25, 9:02:39 AM	6/06/25, 9:27:32 AM	24m 52s		Attendee
Seagave, Ann	6/06/25, 9:02:40 AM	6/06/25, 9:30:10 AM	27m 30s	ASeagave@getpass.com	Attendee
Stephane, Stephane (External)	6/06/25, 9:02:46 AM	6/06/25, 9:30:12 AM	27m 24s	Stephane.Press@seacom.com	Attendee
Chamaine Estrocin (External)	6/06/25, 9:02:55 AM	6/06/25, 9:30:05 AM	27m 10s	chamaine@estrocin.com	Attendee
Daniel Drew (External)	6/06/25, 9:04:11 AM	6/06/25, 9:31:04 AM	26m 53s	daniel.drew@tlyn.com	Attendee
18132488769	6/06/25, 9:04:38 AM	6/06/25, 9:30:09 AM	25m 32s		Attendee
Sharon Ray (External)	6/06/25, 9:04:40 AM	6/06/25, 9:31:04 AM	26m 23s	ASeagave@seagreening.net	Attendee
Steven, Jorge	6/06/25, 9:05:30 AM	6/06/25, 9:30:10 AM	24m 49s	JSteven@getpass.com	Attendee
Aaron Russell (External)	6/06/25, 9:05:30 AM	6/06/25, 9:29:47 AM	24m 16s	ARussell@mcnic.com	Attendee

Paul Kovacs (External)	6/06/25, 9:06:14 AM	6/06/25, 9:31:04 AM	24m 50s	pkovacs@bowman.com	Attendee
Thompson, Laura	6/06/25, 9:06:15 AM	6/06/25, 9:30:18 AM	24m 2s	lthompson@getpass.com	Attendee
Gayle Nam (External)	6/06/25, 9:07:45 AM	6/06/25, 9:31:04 AM	23m 18s	Gnam@stacorp.com	Attendee
Bishin, Joseph (US-US)	6/06/25, 9:07:55 AM	6/06/25, 9:29:22 AM	20m 26s	joseph.bishin@parsons.com	Attendee
Zia Khalilq (External)	6/06/25, 9:10:41 AM	6/06/25, 9:30:13 AM	19m 31s	zkhalilq@aegroup Ltd.com	Attendee
Rao Doppalapudi (Unverified)	6/06/25, 9:10:43 AM	6/06/25, 9:30:04 AM	19m 20s		Attendee
Beth McCluskey (External)	6/06/25, 9:11:27 AM	6/06/25, 9:30:05 AM	18m 37s	beth.mccluskey@hylan.com	Attendee
Margaret Henriksen (External)	6/06/25, 9:11:34 AM	6/06/25, 9:28:01 AM	18m 28s	mhenriksen@seeng.umicrosoft.com	Attendee
Akwumi Attawia (External)	6/06/25, 9:12:05 AM	6/06/25, 9:30:16 AM	18m 11s	aattawia@osehinc.com	Attendee
Tom Gilt (External)	6/06/25, 9:13:22 AM	6/06/25, 9:30:30 AM	17m 7s	tomg@thomas-engineering.com	Attendee
Kirby, Mara (US-US)	6/06/25, 9:15:30 AM	6/06/25, 9:29:50 AM	14m 19s	Mara.Kirby@parsons.com	Attendee
Robinson, James (External)	6/06/25, 9:22:14 AM	6/06/25, 9:30:07 AM	7m 53s	jrobinson@burnsmcd.com	Attendee
Vick, Marlene	6/06/25, 9:24:42 AM	6/06/25, 9:30:24 AM	5m 41s	mvick@getpass.com	Attendee
Krista Thoenness (External)	6/06/25, 9:25:32 AM	6/06/25, 9:30:17 AM	4m 45s	KThoenness@infrastructure-eng.com	Attendee
13125044401 (Unverified)	6/06/25, 9:25:56 AM	6/06/25, 9:30:00 AM	4m 4s		Attendee



BUILDING FOR SUCCESS

In-Road Electric Vehicle Charging

The Illinois Tollway's Vision

Presented by Illinois Tollway Engineering

June 06, 2025



Please remain
muted for the
duration of the
webinar



HOUSEKEEPING RULES

In-Road Electric Vehicle Charging

The Illinois Tollway's Vision

KARYN ROBLES

Chief of Planning

LAURA THOMPSON

Executive Project Manager

June 6, 2025

BRIDGING >>> THE FUTURE

- ✓ Address **system needs** and **modernization**
- ✓ Implementing **stakeholder priorities**
- ✓ **Transition** to the next major capital plan
- ✓ Ensures **consistent funding** for infrastructure investments
- ✓ Begins **advance work** for potential projects and initiatives



IN-ROAD ELECTRIC VEHICLE CHARGING INITIATIVE

Advanced In-Road EV Charging Pilot in PSB 25-2

GOALS

Interoperability

- Vehicles, methods and technology

Energy as a Service

- Monitoring and reporting; Back Office integration

Public Outreach & Education

- Implementation and safety; System benefits

Safety, Maintenance and Operations

- 'No-Harm'; Pavement and maintenance impacts

Sustainability

- Environmental and economic

Workforce Development

- Diverse and inclusive development and training



GUIDING PRINCIPLES

► Innovation

► Sustainability

► Equitable Economic Development

► Diversity & Inclusion

NATIONAL IMPLEMENTATION

PEER SNAPSHOT



1/4-mile roadway at Utah Inland Port in Salt Lake City



Central Florida Expressway pilot 1/2-mile segment on Lake/Orange Expwy. in Clermont



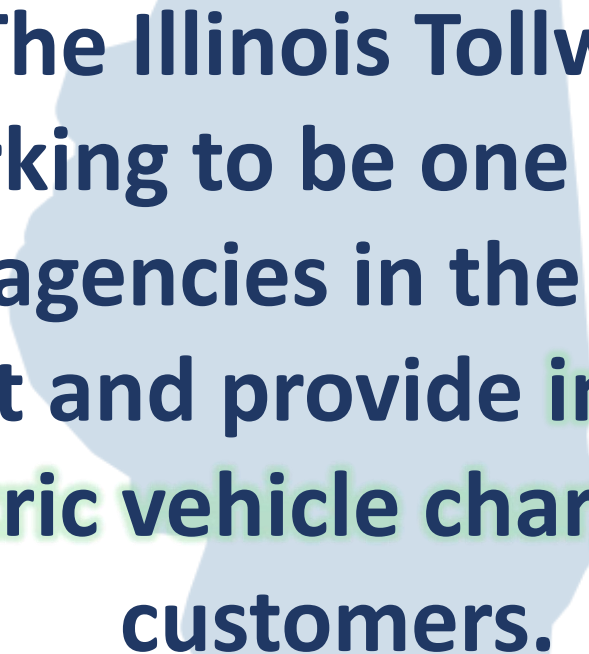
Partnership between MDOT and City of Detroit established 1/4-mile pilot project



1/4-mile pilot project on US231/52 in West Lafayette



PA Turnpike exploring on the Mon/Fayette Expressway near Pittsburgh

A light blue silhouette map of the state of Illinois is positioned behind the text.

**The Illinois Tollway
working to be one of the
first agencies in the U.S. to
pilot and provide in-road
electric vehicle charging to
customers.**

ASPIRE TEAMING – ALIGNING SIMILAR GOALS

- ✓ Reduce harmful emissions
- ✓ Improve air quality and public health
- ✓ Protect the environment
- ✓ Support economic development through reduced cost and scale efficiencies
- ✓ Workforce skilling and job creation

*"The Illinois Tollway is **committed to leading the way in innovation** by integrating new technologies and expanding EV infrastructure across our 294-mile roadway system"*

– Cassandra Rouse, Illinois Tollway Executive Director



IN-ROAD **ELECTRIC** **VEHICLE** CHARGING



**Dynamic Wireless
Power Transfer**



**In-Roadway Magnetic Coils
Transmit Energy**



**Vehicle Mounted Magnetic
Coils Receive**



**Wireless Communication Facilitates
Maintenance Charge for Authorized EV**

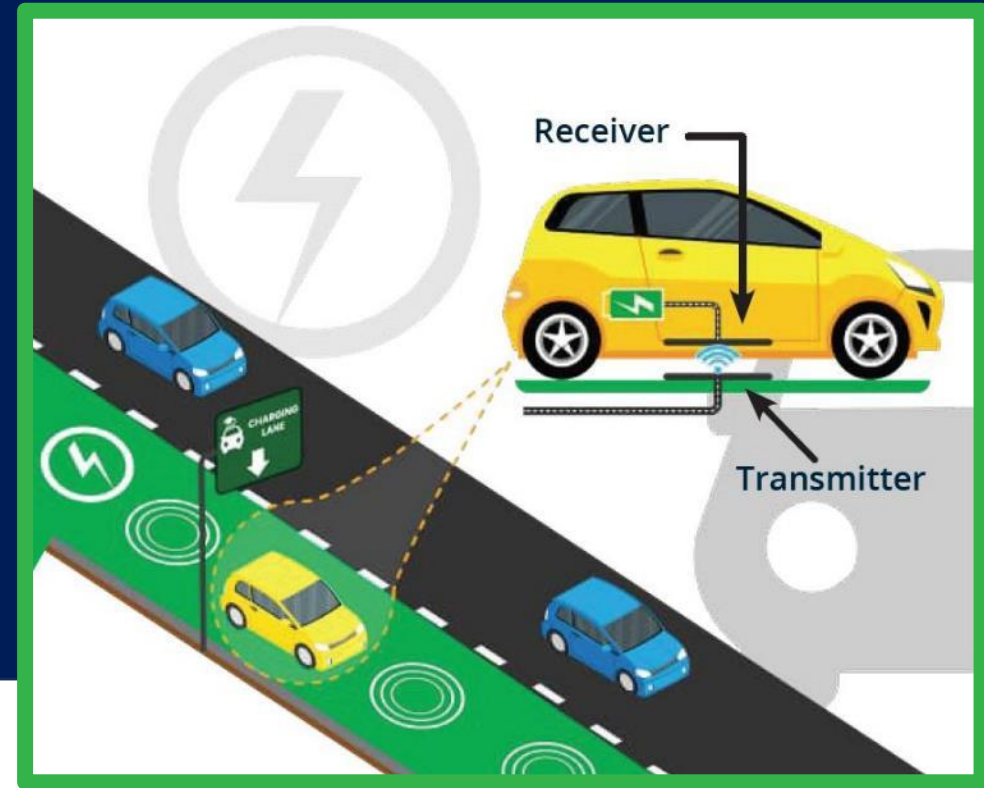


PILOT PROGRAM OVERVIEW

- Inductive charging feasibility study
- Preliminary identification of pilot locations
- 1/3-mile or more of electrified road
- Single lane testbed implementation

Potential Goals and Benefits

- ✓ Proof-of-concept for **new technology**
- ✓ Evaluate **durability and reliability**
- ✓ Design **national specs** for future use
- ✓ Examine **power delivery**
- ✓ Explore a **new revenue stream**
- ✓ Evaluate **environmental benefits**
- ✓ Provide **new customer amenities**
- ✓ Build on **existing infrastructure**



IN-ROAD ELECTRIC VEHICLE CHARGING

NEXT STEPS

PHASE I COMPLETION

- Verify location
- Stakeholder input
- Implementation Strategy

COORDINATION

- ComEd power delivery
- Coordination with external stakeholders
- Research and development partners

SCHEDULE

- Begin 2025



PSB 25-2 Item No. 1: Now Posted

Delivering a design-upon-request contract to encourage innovative implementation

IN-ROAD ELECTRIC VEHICLE CHARGING

NEXT STEPS

KEY PERSONNEL

- Project Manager
- Project Engineer (IL PE)
- Roadway Designer (IL PE)
- Electrical Designer (IL PE)
- QC/QA Reviewer (IL PE)

EXPERIENCE

- 3 years transportation electrification
- 1 year dynamic wireless power transfer

IDOT QUALIFICATIONS

- Highways (Freeways)
- Special Services (Electrical Engineering)
- Special Services (Feasibility)
- Special Services (Surveying)



PSB 25-2 Item No. 1: Now Posted

Delivering a design-upon-request contract to encourage innovative implementation

FOSTERING GROWTH

Providing small, diverse and veteran-owned firms with peer-to-peer training and mentoring and exposure to cutting-edge technology



Partnering for Growth Program

- ✓ Protégés work with **mentors** on agreed-upon scope of services
- ✓ Expands **technical capabilities** and **develops skills** for Tollway work



Emerging Technology Initiative

- ✓ Exposes small, diverse and veteran-owned firms to **latest technology, equipment** and **project delivery methods**



ASPIRE Partnership

- ✓ Unique opportunity to expose emerging firms to **research** and **peer-to-peer collaboration efforts**

UPCOMING OPPORTUNITIES

SCAN QR CODE FOR
CURRENT LOOK AHEAD

- Questions PSB_25-2.01_Questions_and_RFIs@docs.e-builder.net
- Questions are due June 16th at 4:30 pm Central Time



DIVERSITY WEBINAR SERIES PRESENTATIONS

Visit illinoistollway.com/diversitywebinarseries



THANK YOU

1. Summary

Meeting title	Building for Success Webinar Series 117: In-Road Electric Vehicle Charging: The Illinois Tollway's Vision
Registration page views	475
Registered participants	210
Canceled registrations	2
Attended participants	144
Unidentified participants	1
Start time	6/06/25, 10:43:00 AM
End time	6/06/25, 11:29:07 AM
Meeting duration	46m 7s
Average attendance time	23m 45s

2. Participants

Name	First Join	Last Leave	In-Meeting	Email	Participant ID (UPN)	Role	Registration Firs	Registration Last	N	Registration Email	Registration Time	Registration Status
Karahalios, Alexander	6/06/25, 10:46:23 AM	6/06/25, 11:29:07 AM	42m 44s	akarahalios@getipass.com	akarahalios@getipass.com	Organizer						
Thompson, Laura	6/06/25, 10:43:03 AM	6/06/25, 11:27:39 AM	44m 36s	lthompson@getipass.com	lthompson@getipass.com	Organizer						
Robles, Karyn	6/06/25, 10:43:23 AM	6/06/25, 11:27:42 AM	41m 18s	KRobles@getipass.com	KRobles@getipass.com	Organizer						
Barak, Angela	6/06/25, 11:03:26 AM	6/06/25, 11:26:58 AM	23m 31s	ABarak@getipass.com	ABarak@getipass.com	Organizer						
Bennett, Kristen	6/06/25, 11:03:40 AM	6/06/25, 11:26:27 AM	22m 47s	kbennett@getipass.com	kbennett@getipass.com	Organizer						
Perez, Lorena	6/06/25, 11:04:20 AM	6/06/25, 11:26:51 AM	22m 31s	LPerez@getipass.com	LPerez@getipass.com	Organizer						
Brigitte Barr (External)	6/06/25, 10:51:22 AM	6/06/25, 11:26:25 AM	28m 28s	bbarr@dbsterlin.com	bbarr@DBSTERLIN.COM	Attendee	Brigitte	Barr		bbarr@dbsterlin.com	5/30/25, 2:45:48 PM	Registered
Prohammer, Valerie	6/06/25, 10:54:02 AM	6/06/25, 11:26:46 AM	31m 35s	VProhammer@getipass.com	VProhammer@getipass.com	Attendee	Valerie	Prohammer		vprohammer@getipass.com	6/06/25, 9:20:15 AM	Registered
Alva Thomas Jr	6/06/25, 10:54:35 AM	6/06/25, 11:06:59 AM	12m 24s			Attendee	Alva	Thomas Jr		athomas@icutechassist.net	6/04/25, 9:42:38 AM	Registered
Steve Ingracia (External)	6/06/25, 10:54:43 AM	6/06/25, 11:25:08 AM	24m 30s	Steve.Ingracia@thueng.com	Steve.Ingracia@thueng.com	Attendee	Steve	Ingracia		steve.ingracia@thueng.com	6/05/25, 10:36:49 AM	Registered
Rodriguez, Myrtia	6/06/25, 10:54:44 AM	6/06/25, 11:26:50 AM	30m 53s	MRodriguez@getipass.com	MRodriguez@getipass.com	Attendee	Myrtia	Rodriguez		mrodriguez@getipass.com	6/05/25, 11:11:08 AM	Registered
Mondel, Jim	6/06/25, 10:55:00 AM	6/06/25, 11:26:41 AM	31m 41s	JMondel@getipass.com	JMondel@getipass.com	Attendee	Jim	Mondel		jmondel@getipass.com	6/06/25, 8:21:51 AM	Registered
Rempfer, Matthew	6/06/25, 10:55:05 AM	6/06/25, 11:26:55 AM	31m 49s	Matthew.Rempfer@jacobs.com	Matthew.Rempfer@jacobs.com	Attendee	Matthew	Rempfer		matthew.rempfer@jacobs.com	6/02/25, 10:28:55 AM	Registered
David Novak (External)	6/06/25, 10:55:10 AM	6/06/25, 11:24:47 AM	29m 36s	dnovak@cbbel.com	dnovak@cbbel.com	Attendee	David	Novak		dnovak@cbbel.com	6/02/25, 4:20:30 PM	Registered
Galvan, Jorge	6/06/25, 10:55:37 AM	6/06/25, 11:27:34 AM	31m 57s	JGalvan@getipass.com	JGalvan@getipass.com	Attendee	Jorge	Galvan		jgalvan@getipass.com	6/06/25, 9:18:34 AM	Registered
Don Linford (External)	6/06/25, 10:55:40 AM	6/06/25, 11:26:59 AM	31m 18s	don.linford@usu.edu	A00492258@aggies.usu.edu	Attendee	Don	Linford		don.linford@usu.edu	6/02/25, 1:03:56 AM	Registered
Gancarz, Daniel	6/06/25, 10:55:44 AM	6/06/25, 11:26:27 AM	30m 42s	dgancarz@getipass.com	dgancarz@getipass.com	Attendee	Daniel	Gancarz		dgancarz@getipass.com	5/30/25, 1:53:18 PM	Registered
Ajami, Elias	6/06/25, 10:56:13 AM	6/06/25, 11:26:27 AM	28m 21s	eajami@getipass.com	eajami@getipass.com	Attendee	Elias	Ajami		eajami@getipass.com	6/05/25, 9:51:13 AM	Registered
Hashim, Lilly	6/06/25, 10:56:30 AM	6/06/25, 11:26:58 AM	25m 27s	LHashim@getipass.com	LHashim@getipass.com	Attendee	Lilly	hashim		lhashim@getipass.com	6/02/25, 10:56:33 AM	Registered
Arja, Zaynah (External)	6/06/25, 10:56:37 AM	6/06/25, 11:26:25 AM	29m 48s	Zaynah.Arja@illinois.gov	Zaynah.Arja@illinois.gov	Attendee	Zaynah	Arja		zaynah.arja@illinois.gov	6/03/25, 1:58:48 PM	Registered
Drozdz, Laura	6/06/25, 10:57:05 AM	6/06/25, 11:27:15 AM	30m 9s	LDrozdz@getipass.com	LDrozdz@getipass.com	Attendee	Laura	Drozdz		ldrozdz@getipass.com	6/06/25, 7:58:28 AM	Registered
Spencer, Takesha	6/06/25, 10:57:06 AM	6/06/25, 10:59:49 AM	2m 43s	TSpencer@getipass.com	TSpencer@getipass.com	Attendee	Takesha	Spencer		tspencer@getipass.com	6/06/25, 7:59:18 AM	Registered
Abdillahi, Hanan (External)	6/06/25, 10:57:09 AM	6/06/25, 11:26:54 AM	29m 44s	Hanan.Abdillahi@illinois.gov	Hanan.Abdillahi@illinois.gov	Attendee	Hanan	Abdillahi		hanan.abdillahi@illinois.gov	6/03/25, 2:01:18 PM	Registered
Pekarek, Steven D (External)	6/06/25, 10:57:17 AM	6/06/25, 11:26:26 AM	29m 5s	spekarek@purdue.edu	spekarek@purdue.edu	Attendee	Steve	Pekarek		spekarek@purdue.edu	6/06/25, 5:30:13 AM	Registered
Banda, Vincent	6/06/25, 10:57:22 AM	6/06/25, 11:26:25 AM	25m 55s	VBanda@getipass.com	VBanda@getipass.com	Attendee	Vincent	Banda		vbanda@getipass.com	6/06/25, 8:03:19 AM	Registered
Zia Khaliq (External)	6/06/25, 10:57:33 AM	6/06/25, 11:26:55 AM	29m 21s	zkhalik@aegrouppltd.com	zkhalik@aegrouppltd.com	Attendee	Zia	Khaliq		zkhalik@aegrouppltd.com	5/30/25, 1:46:13 PM	Registered
Dan Stueland (Unverified)	6/06/25, 10:57:37 AM	6/06/25, 11:26:27 AM	28m 50s			Attendee	Dan	Stueland		dstueland@interraservices.com	5/30/25, 1:47:26 PM	Registered
Darryl Dawson (External)	6/06/25, 10:57:43 AM	6/06/25, 11:26:23 AM	28m 40s	ddawson@itsengineering-ltd.com	ddawson@itsengineering-ltd.com	Attendee	Darryl	Dawson		ddawson@itsengineering-ltd.com	5/31/25, 6:07:00 PM	Registered
Hukic-Hamzic, Emina	6/06/25, 10:58:12 AM	6/06/25, 11:27:03 AM	28m 51s	EHukic-Hamzic@getipass.com	EHukic-Hamzic@getipass.com	Attendee	Emina	Hukic-Hamzic		ehukic-hamzic@getipass.com	5/30/25, 1:56:00 PM	Registered
Oyervides, Carlos (External)	6/06/25, 10:58:15 AM	6/06/25, 11:26:28 AM	28m 12s	Carlos.Oyervides@atkinsrealis.com	Carlos.Oyervides@atkinsrealis.com	Attendee	Carlos	Oyervides		carlos.oyervides@atkinsrealis.com	5/30/25, 2:50:22 PM	Registered
Pozzessere, Kari (External)	6/06/25, 10:58:20 AM	6/06/25, 11:26:25 AM	28m 4s	Kari.Pozzessere@aecom.com	Kari.Pozzessere@aecom.com	Attendee	Kari	Pozzessere		kari.pozzessere@aecom.com	5/30/25, 2:06:42 PM	Registered
Nick Schilling (External)	6/06/25, 10:58:33 AM	6/06/25, 11:26:58 AM	28m 36s	Nick.Schilling@czaplickilopez.com	Nick.Schilling@czaplickilopez.com	Attendee	Nick	Schilling		nick.schilling@czaplickilopez.com	6/06/25, 9:16:55 AM	Registered
Brian Manning (External)	6/06/25, 10:58:33 AM	6/06/25, 11:26:35 AM	28m 1s	BManning@parametrix.com	BManning@parametrix.com	Attendee	Athreya	Sreenivasan		asreenivasan@parametrix.com	5/30/25, 2:42:43 PM	Registered
Valentino, Michael	6/06/25, 10:58:41 AM	6/06/25, 10:58:48 AM	6s	MValentino@getipass.com	MValentino@getipass.com	Attendee	Mike	Valentino		mvalentino@getipass.com	6/02/25, 11:29:00 AM	Registered
Brian Rice (External)	6/06/25, 10:58:44 AM	6/06/25, 11:26:28 AM	27m 44s	brice@dbsterlin.com	brice@DBSTERLIN.COM	Attendee	Brian	Rice		brice@dbsterlin.com	5/30/25, 4:18:41 PM	Registered
Valentino, Mike (External)	6/06/25, 10:58:52 AM	6/06/25, 11:27:25 AM	28m 33s	Mike.Valentino@wsp.com	Mike.Valentino@wsp.com	Attendee	Mike	Valentino		mvalentino@getipass.com	6/02/25, 11:29:00 AM	Registered
J S	6/06/25, 10:58:55 AM	6/06/25, 11:06:43 AM	7m 48s			Attendee	Joy	Schaad		jschaad@lse-eng.com	6/06/25, 9:16:20 AM	Registered
Harrington, Jennifer (External)	6/06/25, 10:58:56 AM	6/06/25, 11:26:20 AM	27m 24s	jharrington@f-w.com	jharrington@f-w.com	Attendee	Jennifer	Harrington		jharrington@f-w.com	6/06/25, 8:38:19 AM	Registered
Emily Klempfner (External)	6/06/25, 10:58:56 AM	6/06/25, 11:26:27 AM	27m 30s	eklempfner@singhinc.com	eklempfner@singhinc.com	Attendee	Emily	Klempfner		eklempfner@singhinc.com	6/02/25, 12:32:26 PM	Registered
Fleming, Aislinn E. (External)	6/06/25, 10:58:58 AM	6/06/25, 11:26:27 AM	27m 28s	aifleming@gfnet.com	aifleming@gfnet.com	Attendee	Aislinn	Fleming		aifleming@gfnet.com	6/02/25, 1:02:46 PM	Registered
Cuenca, Isaac	6/06/25, 10:59:04 AM	6/06/25, 11:29:07 AM	30m 2s	ICuenca@getipass.com	ICuenca@getipass.com	Attendee	Isaac	Cuenca		icuenca@getipass.com	6/06/25, 10:54:32 AM	Registered
Ramos, Vanessa	6/06/25, 10:59:06 AM	6/06/25, 11:26:54 AM	27m 47s	VRamos@getipass.com	VRamos@getipass.com	Attendee	Vanessa	Ramos		vramos@getipass.com	6/05/25, 3:10:43 PM	Registered
Howe, Ruth	6/06/25, 10:59:09 AM	6/06/25, 11:26:27 AM	27m 17s	RAHowe@getipass.com	RAHowe@getipass.com	Attendee	Ruth	Howe		rahowe@getipass.com	6/06/25, 10:51:09 AM	Registered
Antonio Vercillo (External)	6/06/25, 10:59:10 AM	6/06/25, 11:26:25 AM	25m 50s	avercillo@dbsterlin.com	avercillo@dbsterlin.com	Attendee	Antonio	Vercillo		avercillo@dbsterlin.com	6/05/25, 9:14:13 PM	Registered
Brian Scifers	6/06/25, 10:59:14 AM	6/06/25, 11:26:56 AM	27m 41s	bscifers@se3.us	bscifers@se3.us	Attendee	Brian	Scifers		bscifers@se3.us	5/30/25, 4:09:44 PM	Registered
Rafael Herrera	6/06/25, 10:59:15 AM	6/06/25, 11:26:56 AM	27m 40s	rherrera@se3.us	rherrera@se3.us	Attendee	Rafael	Herrera		rherrera@se3.us	6/06/25, 10:23:39 AM	Registered
Lesley January (External)	6/06/25, 10:59:27 AM	6/06/25, 11:26:58 AM	27m 30s	LJanuary@jwincorporated.com	LJanuary@jwincorporated.com	Attendee	Lesley	January		ljanuary@jwincorporated.com	6/02/25, 10:43:38 AM	Registered
Eric Walters (Unverified)	6/06/25, 10:59:28 AM	6/06/25, 11:26:52 AM	27m 14s			Attendee	Eric	Walters		walters@pcka.com	6/04/25, 4:59:20 PM	Registered
Reilly, Greg (External)	6/06/25, 10:59:31 AM	6/06/25, 11:26:45 AM	27m 23s	Greg.Reilly@aecom.com	Greg.Reilly@aecom.com	Attendee	Greg	Reilly		greg.reilly@aecom.com	5/30/25, 1:53:43 PM	Registered
Rajpurkar, Amar [US-US]	6/06/25, 10:59:33 AM	6/06/25, 11:26:27 AM	26m 53s	Amar.Rajpurkar@parsons.com	Amar.Rajpurkar@parsons.com	Attendee	Amar	Rajpurkar		amar.raipurkar@parsons.com	6/02/25, 8:38:37 AM	Registered
Klein, Nicholas	6/06/25, 10:59:34 AM	6/06/25, 11:26:16 AM	26m 42s	Nicholas.Klein@illinois.gov	Nicholas.Klein@illinois.gov	Attendee	Nicholas	Klein		nicholas.klein@illinois.gov	6/03/25, 4:23:07 PM	Registered
Mohammad Rashed (External)	6/06/25, 10:59:39 AM	6/06/25, 11:01:43 AM	2m 3s	mrashed@dbsterlin.com	mrashed@DBSTERLIN.COM	Attendee	Mohammed	Rashed		mrashed@dbsterlin.com	5/30/25, 2:45:09 PM	Registered
Pieniazek, Dave (External)	6/06/25, 10:59:41 AM	6/06/25, 11:26:27 AM	26m 46s	Dave.Pieniazek@stantec.com	dave.pieniazek@stantec.com	Attendee	Dave	Pieniazek		dave.pieniazek@stantec.com	5/30/25, 1:50:28 PM	Registered
Margaret Jones (External)	6/06/25, 10:59:41 AM	6/06/25, 11:26:50 AM	27m 8s	mjones@innercitycubes.com	mjoness@icutechassist.net	Attendee	Margaret	Jones		mjoness@icutechassist.net	6/05/25, 2:27:21 PM	Registered
Forbes, Jackie	6/06/25, 10:59:47 AM	6/06/25, 11:26:27 AM	26m 40s	JForbes@getipass.com	JForbes@getipass.com	Attendee	Jackie	Forbes		jforbes@getipass.com	6/06/25, 10:01:38 AM	Registered
Nick Benavides (Unverified)	6/06/25, 10:59:50 AM	6/06/25, 11:26:26 AM	26m 36s			Attendee	Nicholas	Benavides		nbenavides@pcka.com	6/02/25, 7:15:46 AM	Registered
Laura Rogers (External)	6/06/25, 10:59:50 AM	6/06/25, 11:26:25 AM	26m 34s	LauraRogers@LaurelGroupLLC.omnicros	LauraRogers@LaurelGroupLLC.omni	Attendee	Laura	Rogers		laura@laurelgroup.us	6/02/25, 1:35:12 PM	Registered
Zeman, Benjamin	6/06/25, 10:59:57 AM	6/06/25, 11:26:48 AM	26m 51s	Benjamin.Zeman@hdrinc.com	bzeman@hdrinc.com	Attendee	Benjamin	Zeman		benjamin.zeman@hdrinc.com	5/30/25, 1:34:54 PM	Registered

Deja Monroe (External)	6/06/25, 10:59:57 AM	6/06/25, 11:26:52 AM	26m 55s	DMonroe@infrastructure-eng.com	DMonroe@infrastructure-eng.com	Attendee	Deja	Monroe	dmonroe@infrastructure-eng.com	5/30/25, 4:47:05 PM	Registered
Smith, Brian (Chicago) (External)	6/06/25, 11:00:05 AM	6/06/25, 11:26:23 AM	26m 17s	brian.smith@aecom.com	brian.smith@aecom.com	Attendee	Brian	Smith	brian.smith@aecom.com	6/06/25, 9:39:42 AM	Registered
Diana Briones (Unverified)	6/06/25, 11:00:07 AM	6/06/25, 11:26:24 AM	26m 17s			Attendee	Diana	Briones	diana.briones@oneatlas.com	6/03/25, 2:12:24 PM	Registered
Zorn, Mike (External)	6/06/25, 11:00:15 AM	6/06/25, 11:25:29 AM	15m 13s	mzorn@hwlochner.com	mzorn@hwlochner.com	Attendee	Michael	Zorn	mzorn@hwlochner.com	5/30/25, 1:47:33 PM	Registered
Williams, Cynthia	6/06/25, 11:00:23 AM	6/06/25, 11:26:53 AM	26m 29s	CMWilliams@getpass.com	CMWilliams@getpass.com	Attendee	Cindy	Williams	cmwilliams@getpass.com	5/30/25, 1:49:03 PM	Registered
Gabi Garcia	6/06/25, 11:00:25 AM	6/06/25, 11:26:23 AM	26m 12s			Attendee	Gabriela	Garcia	gabi@indepchi.com	6/03/25, 10:54:37 AM	Registered
Kupko, Jeffrey (External)	6/06/25, 11:00:29 AM	6/06/25, 11:26:22 AM	25m 53s	Jeffrey.Kupko@mbakerintl.com	Jeffrey.Kupko@mbakerintl.com	Attendee	Jeff	Kupko	jeffrey.kupko@mbakerintl.com	5/31/25, 7:32:00 AM	Registered
Walter Chornomaz (External)	6/06/25, 11:00:33 AM	6/06/25, 11:26:48 AM	26m 14s	wchornomaz@squa.com	wchornomaz@squa.com	Attendee	Walter	Chornomaz	wchornomaz@squa.com	5/30/25, 1:40:30 PM	Registered
Greg Osborne (External)	6/06/25, 11:00:34 AM	6/06/25, 11:27:01 AM	26m 27s	gosborne@epsteinglobal.com	gosborne@epsteinglobal.com	Attendee	Greg	Osborne	gosborne@epsteinglobal.com	6/06/25, 9:35:14 AM	Registered
Robinson, James (External)	6/06/25, 11:00:34 AM	6/06/25, 11:26:35 AM	26m 1s	jrobinson@burnsmcd.com	jrobinson@burnsmcd.com	Attendee	Jimmy	Robinson	jrobinson@burnsmcd.com	6/05/25, 10:40:59 AM	Registered
Stefan Tongur	6/06/25, 11:00:36 AM	6/06/25, 11:26:54 AM	26m 18s			Attendee	Stefan	Tongur	stefan@electreon.com	5/30/25, 2:26:28 PM	Registered
Charles Frangos (External)	6/06/25, 11:00:36 AM	6/06/25, 11:26:08 AM	25m 31s	cfrangos@orionengineersllc.com	cfrangos@orionengineersllc.com	Attendee	Charles	Frangos	cfrangos@orionengineersllc.com	6/06/25, 10:59:07 AM	Registered
Mohsen Farahany (External)	6/06/25, 11:00:40 AM	6/06/25, 11:26:24 AM	25m 43s	MFarahany@RME-i.com	MFarahany@RME-i.com	Attendee	Mohsen	Farahany	mfarahany@rme-i.com	6/02/25, 12:01:07 PM	Registered
Carl Wendell (External)	6/06/25, 11:00:42 AM	6/06/25, 11:29:07 AM	28m 25s	Carl.wendell@aviveterans.com	Carl.wendell@aviveterans.com	Attendee	Carl	Wendell	carl.wendell@aviveterans.com	5/30/25, 2:04:13 PM	Registered
Cameron, Becca	6/06/25, 11:00:42 AM	6/06/25, 11:26:51 AM	26m 8s	Becca.Cameron@jacobs.com	Becca.Cameron@jacobs.com	Attendee	Becca	Cameron	becca.cameron@jacobs.com	6/06/25, 7:08:22 AM	Registered
Jason Martin	6/06/25, 11:00:43 AM	6/06/25, 11:13:41 AM	11m 26s	jmartin@se3.us	jmartin@se3.us	Attendee	Jason	Martin	jmartin@se3.us	5/30/25, 3:37:28 AM	Registered
Myers, Lindia	6/06/25, 11:00:56 AM	6/06/25, 11:29:07 AM	28m 10s	LMyers@getpass.com	LMyers@getpass.com	Attendee	Lindia	Myers	lmyers@getpass.com	6/06/25, 10:57:16 AM	Registered
Ciara Gormley (External)	6/06/25, 11:00:57 AM	6/06/25, 11:26:26 AM	25m 28s	ciara.gormley@tylin.com	ciara.gormley@tylin.com	Attendee	Ciara	Gormley	ciara.gormley@tylin.com	6/02/25, 11:11:24 AM	Registered
Wolpert, Andrew	6/06/25, 11:00:59 AM	6/06/25, 11:26:54 AM	25m 54s	Andrew.Wolpert@jacobs.com	Andrew.Wolpert@jacobs.com	Attendee	ANDREW	WOLPERT	andrew.wolpert@jacobs.com	6/02/25, 11:05:44 AM	Registered
Austin Provost (External)	6/06/25, 11:01:02 AM	6/06/25, 11:26:48 AM	25m 45s	austin.provost@oneatlas.com	Austin.Provost@oneatlas.com	Attendee	Austin	Provost	austin.provost@oneatlas.com	6/06/25, 7:23:29 AM	Registered
Daniels, Ann (External)	6/06/25, 11:01:03 AM	6/06/25, 11:16:44 AM	15m 41s	Ann.Daniels@rsandh.com	Ann.Daniels@rsandh.com	Attendee	Ann	Daniels	ann.daniels@rsandh.com	6/02/25, 1:50:43 PM	Registered
Brian Marshall (External)	6/06/25, 11:01:04 AM	6/06/25, 11:23:09 AM	22m 5s	bmarshall2@olsson.com	bmarshall2@olsson.com	Attendee	Brian	Marshall	bmarshall2@olsson.com	6/02/25, 7:14:20 AM	Registered
Samina Saleem (External)	6/06/25, 11:01:04 AM	6/06/25, 11:26:48 AM	25m 44s	ssaleem@innovaconsultinc.com	ssaleem@innovaconsultinc.com	Attendee	Samina	Saleem	ssaleem@innovaconsultinc.com	6/05/25, 12:13:16 PM	Registered
Hammerl, Chad	6/06/25, 11:01:04 AM	6/06/25, 11:26:47 AM	25m 42s	Chad.Hammerl@jacobs.com	Chad.Hammerl@jacobs.com	Attendee	Chad	Hammerl	chad.hammerl@jacobs.com	6/02/25, 12:29:02 PM	Registered
Blalack, Tallis (External)	6/06/25, 11:01:08 AM	6/06/25, 11:26:49 AM	25m 41s	Tallis.Blalack@mbakerintl.com	Tallis.Blalack@mbakerintl.com	Attendee	Tallis	Blalack	tallis.blalack@mbakerintl.com	5/30/25, 1:54:57 PM	Registered
Esquivel, Dennis (External)	6/06/25, 11:01:09 AM	6/06/25, 11:26:15 AM	25m 6s	Dennis.Esquivel@illinois.gov	Dennis.Esquivel@illinois.gov	Attendee	Dennis	Esquivel	dennis.esquivel@illinois.gov	6/03/25, 1:56:42 PM	Registered
Jeffrey Hoyos (External)	6/06/25, 11:01:12 AM	6/06/25, 11:26:57 AM	25m 44s	jhoyos@hntb.com	jhoyos@hntb.com	Attendee	Jeff	Hoyos	jhoyos@hntb.com	5/30/25, 4:47:26 PM	Registered
Thomas Szabo (External)	6/06/25, 11:01:17 AM	6/06/25, 11:27:28 AM	26m 10s	Thomas.Szabo@oneatlas.com	Thomas.Szabo@oneatlas.com	Attendee	Thomas	Szabo	thomas.szabo@oneatlas.com	6/03/25, 2:01:33 PM	Registered
Wes Brazas	6/06/25, 11:01:19 AM	6/06/25, 11:26:58 AM	25m 38s	wes.brazas@amesengineeringinc.com	wes.brazas@amesengineeringinc.com	Attendee	Wesley	Brazas	wes.brazas@amesengineeringinc.com	6/06/25, 11:00:32 AM	Registered
ClemmonsStott, Lisa (External)	6/06/25, 11:01:19 AM	6/06/25, 11:27:09 AM	25m 48s	Lisa.ClemmonsStott@illinois.gov	Lisa.ClemmonsStott@illinois.gov	Attendee	Lisa	Clemmons Stott	lisa.clemmonsstott@illinois.gov	6/06/25, 4:20:40 PM	Registered
Shyam Raj (External)	6/06/25, 11:01:33 AM	6/06/25, 11:29:07 AM	27m 33s	sraj@aaaengineering.net	sraj@aaaengineering.net	Attendee	Shyam	Raj	sraj@aaaengineering.net	6/06/25, 10:59:58 AM	Registered
Hengesbach,Theodor John	6/06/25, 11:01:38 AM	6/06/25, 11:26:15 AM	24m 37s	thengesbach@getpass.com	thengesbach@getpass.com	Attendee	Theodor John	Hengesbach	thengesbach@getpass.com	6/02/25, 11:02:18 AM	Registered
Reed, Wayne (External)	6/06/25, 11:01:44 AM	6/06/25, 11:26:27 AM	24m 43s	Wayne.Reed@atkinsrealis.com	Wayne.Reed@atkinsrealis.com	Attendee	Wayne	Reed	wayne.reed@atkinsrealis.com	5/30/25, 1:42:19 PM	Registered
Martin, Kathryn (External)	6/06/25, 11:01:45 AM	6/06/25, 11:26:51 AM	25m 6s	Kathryn.Martin@illinois.gov	Kathryn.Martin@illinois.gov	Attendee	Nicholas	Klein	nicholas.klein@illinois.gov	6/03/25, 4:23:07 PM	Registered
Kat Porter (External)	6/06/25, 11:01:46 AM	6/06/25, 11:25:22 AM	23m 36s	kporter@deg-america.com	kporter@deg-america.com	Attendee	Kat	Porter	kporter@deg-america.com	6/06/25, 11:01:03 AM	Registered
Richard Young (External)	6/06/25, 11:02:01 AM	6/06/25, 11:26:26 AM	24m 24s	Richard.Young@oneatlas.com	Richard.Young@oneatlas.com	Attendee	Richard	Young	richard.young@oneatlas.com	5/30/25, 3:37:28 PM	Registered
Liu, Meiyu	6/06/25, 11:02:02 AM	6/06/25, 11:26:46 AM	24m 44s	mliu@getpass.com	mliu@getpass.com	Attendee	Mei	Liu	mliu@getpass.com	6/06/25, 10:48:28 AM	Registered
Mike Harrell (Unverified)	6/06/25, 11:02:05 AM	6/06/25, 11:27:08 AM	25m 2s			Attendee	Mike	Harrell	mharrell@ara.com	5/30/25, 1:33:22 PM	Registered
Scott Cain (External)	6/06/25, 11:02:07 AM	6/06/25, 11:26:22 AM	24m 15s	scott.cain@oneatlas.com	Scott.Cain@oneatlas.com	Attendee	Scott	Cain	scott.cain@oneatlas.com	6/03/25, 9:59:03 AM	Registered
Juan Lopez (External)	6/06/25, 11:02:15 AM	6/06/25, 11:26:43 AM	24m 28s	juan@foundationmech.com	juan@foundationmech.com	Attendee	Juan	Lopez	juan@foundationmech.com	6/06/25, 11:01:31 AM	Registered
Panther, Reed	6/06/25, 11:02:18 AM	6/06/25, 11:27:05 AM	24m 47s	rpanther@getpass.com	rpanther@getpass.com	Attendee	Reed	Panther	rpanther@getpass.com	6/06/25, 10:58:13 AM	Registered
Kyle Duffy (External)	6/06/25, 11:02:25 AM	6/06/25, 11:26:24 AM	23m 59s	kmduffy@gtfinc.com	kmduffy@gtfinc.com	Attendee	Kyle	Duffy	kmduffy@gtfinc.com	5/30/25, 1:56:57 PM	Registered
Robert Boro (External)	6/06/25, 11:02:33 AM	6/06/25, 11:27:13 AM	24m 40s	robert.boro@hbmeng.com	robert.boro@hbmeng.com	Attendee	Robert	Boro	robert.boro@hbmeng.com	5/30/25, 2:16:30 PM	Registered
John Yonan (External)	6/06/25, 11:02:36 AM	6/06/25, 11:26:49 AM	24m 12s	jyonan@collinsengr.com	jyonan@collinsengr.com	Attendee	John	Yonan	jyonan@collinsengr.com	6/03/25, 7:51:41 AM	Registered
Kucharski, Adam	6/06/25, 11:02:46 AM	6/06/25, 11:26:23 AM	23m 37s	Adam.Kucharski@kimley-horn.com	Adam.Kucharski@kimley-horn.com	Attendee	Adam	Kucharski	adam.kucharski@kimley-horn.com	6/05/25, 8:12:56 AM	Registered
Kirby, Mara [US-US]	6/06/25, 11:02:51 AM	6/06/25, 11:26:25 AM	23m 34s	Mara.Kirby@parsons.com	Mara.Kirby@parsons.com	Attendee	Mara	Kirby	mara.kirby@parsons.com	5/30/25, 1:36:49 PM	Registered
Arnold Kasemsarn / DAMA (Unverified)	6/06/25, 11:02:55 AM	6/06/25, 11:27:16 AM	24m 21s			Attendee	Arnold	Kasemsarn	akasemsarn@damaconsultants.com	6/06/25, 11:01:03 AM	Registered
Durkin, Laura	6/06/25, 11:03:04 AM	6/06/25, 11:26:32 AM	23m 28s	LDurkin@getpass.com	LDurkin@getpass.com	Attendee	Laura	Durkin	ldurkin@getpass.com	6/05/25, 3:12:30 PM	Registered
Thompson, Shawn	6/06/25, 11:03:16 AM	6/06/25, 11:12:29 AM	9m 13s	Shawn.Thompson@jacobs.com	shawn.thompson@jacobs.com	Attendee	Shawn	Thompson	shawn.thompson@jacobs.com	6/02/25, 11:43:51 AM	Registered
Brian Castro (External)	6/06/25, 11:03:28 AM	6/06/25, 11:26:50 AM	23m 22s	bcastro@aaaengineering.net	bcastro@aaaengineering.net	Attendee	Brian	Castro	bcastro@aaaengineering.net	5/30/25, 8:35:01 PM	Registered
Sicong Pei	6/06/25, 11:03:29 AM	6/06/25, 11:26:55 AM	23m 25s			Attendee	Sicong	Pei	sicpel07@gmail.com	6/06/25, 11:02:46 AM	Registered
Henao, Chris (External)	6/06/25, 11:03:29 AM	6/06/25, 11:26:21 AM	22m 52s	Christopher.Henao@aecom.com	Christopher.Henao@aecom.com	Attendee	Christopher	Henao	christopher.henao@aecom.com	6/06/25, 11:00:14 AM	Registered
Brink, Michael	6/06/25, 11:03:34 AM	6/06/25, 11:27:06 AM	23m 32s	mbrink@getpass.com	mbrink@getpass.com	Attendee	Michael	Brink	mbrink@getpass.com	6/06/25, 2:49:37 PM	Registered
Tiffany Buchanan (External)	6/06/25, 11:03:34 AM	6/06/25, 11:26:50 AM	23m 16s	TBuchanan@ICUTechAssist.net	TBuchanan@ICUTechAssist.net	Attendee	Tiffany	Buchanan	tbuchanan@icutechassist.net	6/02/25, 11:31:58 AM	Registered
Justin Cook (External)	6/06/25, 11:03:39 AM	6/06/25, 11:27:01 AM	23m 21s	justin.cook@innleadair.com	justin.cook@innleadair.com	Attendee	Justin	Cook	justin.cook@innleadair.com	6/02/25, 7:39:22 AM	Registered
Stephanie Wong (External)	6/06/25, 11:03:42 AM	6/06/25, 11:26:32 AM	22m 50s	swong@swe-solutions.com	swong@swe-solutions.com	Attendee	Stephanie	Wong	swong@swe-solutions.com	5/31/25, 3:50:00 PM	Registered
Malinowski, Bridget (External)	6/06/25, 11:03:42 AM	6/06/25, 11:26:52 AM	23m 10s	Bridget.Malinowski@aecom.com	Bridget.Malinowski@aecom.com	Attendee	Bridget	Malinowski	bridget.malinowski@aecom.com	5/30/25, 3:28:35 PM	Registered
Miller, Sam (External)	6/06/25, 11:04:01 AM	6/06/25, 11:26:26 AM	22m 25s	sdmiller@uillinois.edu	sdmiller@uillinois.edu	Attendee	Sam	Miller	sdmiller@uillinois.edu	6/04/25, 10:46:33 AM	Registered
Seagrave, Ann	6/06/25, 11:04:24 AM	6/06/25, 11:26:24 AM	21m 59s	ASeagrave@getpass.com	ASeagrave@getpass.com	Attendee	Ann	Seagrave	aseagrave@getpass.com	6/06/25, 11:00:50 AM	Registered
Nicole Rose (Unverified)	6/06/25, 11:04:24 AM	6/06/25, 11:28:40 AM	24m 16s			Attendee	Nicole	Rose	nicole@pmcsconsulting.com	6/06/25, 11:03:35 AM	Registered
LaWanda Jones (External)	6/06/25, 11:04:49 AM	6/06/25, 11:26:59 AM	22m 9s	LJones@abnacorp.com	LJones@abnacorp.com	Attendee	Lawanda	Jones	ljones@abnacorp.com	6/06/25, 11:04:02 AM	Registered
Roderick Drew (External)	6/06/25, 11:05:26 AM	6/06/25, 11:26:55 AM	21m 28s	rdrew@HNTB.com	rdrew@hntb.com	Attendee					
Athreya Sreenivasan (External)	6/06/25, 11:05:33 AM	6/06/25, 11:26:27 AM	20m 54s	ASreenivasan@parametrix.com	ASreenivasan@parametrix.com	Attendee	Athreya	Sreenivasan	asreenivasan@parametrix.com	5/30/25, 2:42:43 PM	Registered
James Williams (External)	6/06/25, 11:05:50 AM	6/06/25, 11:26:49 AM	20m 58s	jwilliams@abnacorp.com	jwilliams@abnacorp.com	Attendee	James	Williams	jwilliams@abnacorp.com	6/06/25, 11:05:08 AM	Registered
Andrew Schlichting (External)	6/06/25, 11:05:52 AM	6/06/25, 11:07:22 AM	1m 30s	aschlichting@cmtengr.com	aschlichting@cmtengr.com	Attendee	Andrew	Schlichting	aschlichting@cmtengr.com	6/06/25, 10:16:56 AM	Registered
Nolan, Kevin P.	6/06/25, 11:06:08 AM	6/06/25, 11:29:07 AM	22m 58s	Kevin.Nolan@stvinc.com	Kevin.Nolan@stvinc.com	Attendee	Kevin	Nolan	kevin.nolan@stvinc.com	5/30/25, 10:06:02 PM	Registered
Kumari Celestin (External)	6/06/25, 11:06:44 AM	6/06/25, 11:26:53 AM	20m 8s	kcelestin@ICUTechAssist.net	kcelestin@ICUTechAssist.net	Attendee	kumari	Celestin	kcelestin@communityinscenter.net	6/06/25, 11:05:39 AM	Registered
Mancillas, Pam	6/06/25, 11:07:01 AM	6/06/25, 11:26:54 AM	19m 53s	pmancillas@getpass.com	pmancillas@getpass.com	Attendee	Pam	Mancillas	pmancillas@getpass.com	6/02/25, 8:46:17 AM	Registered
Hall, Danna	6/06/25, 11:07:04 AM	6/06/25, 11:26:28 AM	19m 23s	DHall@getpass.com	DHall@getpass.com	Attendee	Danna	Hall	dhall@getpass.com	6/06/25, 11:06:16 AM	Registered
Alva Thomas (External)	6/06/25, 11:07:19 AM	6/06/25, 11:26:25 AM	19m 6s	AThomas@icutechassist.net	AThomas@icutechassist.net	Attendee	Alva	Thomas Jr	athomas@icutechassist.net	6/04/25, 9:42:38 AM	Registered
Adenike Fasanya-Osilaja (External)	6/06/25, 11:07:25 AM	6/06/25, 11:27:16 AM	19m 51s	Afosilaja@abnacorp.com	Afosilaja@abnacorp.com	Attendee	Adenike	Fasanya-Osilaja	afosilaja@abnacorp.com	6/06/25, 11:06:21 AM	Registered
Coleman, Timothy	6/06/25, 11:07:50 AM	6/06/25, 11:26:21 AM	18m 30s	TJColeman@getpass.com	TJColeman@getpass.com	Attendee	Timothy	Coleman	tjcoleman@getpass.com	6/02/25, 11:17:18 AM	Registered

Weiss, Marla (External)	6/06/25, 11:07:56 AM	6/06/25, 11:26:33 AM	18m 36s	Marla.Weiss@stantec.com	Marla.Weiss@stantec.com	Attendee	Marla	Weiss	marla.weiss@stantec.com	6/06/25, 9:19:05 AM	Registered
David Peters (External)	6/06/25, 11:08:20 AM	6/06/25, 11:26:26 AM	18m 5s	David@LaurelGroupLLC.onmicrosoft.com	David@LaurelGroupLLC.onmicrosoft.com	Attendee	Laura	Rogers	laura@laurelgroup.us	6/02/25, 1:35:12 PM	Registered
Brian Pawula (External)	6/06/25, 11:08:46 AM	6/06/25, 11:29:07 AM	20m 20s	blpawula@hornershifrin.com	blpawula@hornershifrin.com	Attendee	Brian	Pawula	blpawula@hornershifrin.com	6/06/25, 11:07:32 AM	Registered
Gayla Nunn (External)	6/06/25, 11:08:54 AM	6/06/25, 11:26:24 AM	17m 30s	GNunn@abnacorp.com	GNunn@abnacorp.com	Attendee	Gayla	Nunn	gnunn@abnacorp.com	6/06/25, 11:07:23 AM	Registered
13319985448	6/06/25, 11:09:02 AM	6/06/25, 11:26:48 AM	17m 46s			Attendee					
Rhonda Garrett (External)	6/06/25, 11:10:11 AM	6/06/25, 11:26:55 AM	16m 44s	RGarrett@ccjm.com	RGarrett@ccjm.com	Attendee	Rhonda	Garrett	rgarrett@ccjm.com	6/03/25, 9:42:51 AM	Registered
Riley White (External)	6/06/25, 11:15:59 AM	6/06/25, 11:26:47 AM	10m 48s	rwhite@ardmoreroederick.com	rwhite@ardmoreroederick.com	Attendee	Riley	White	rwhite@ardmoreroederick.com	5/30/25, 2:18:16 PM	Registered
Hacking, Kathi	6/06/25, 11:16:29 AM	6/06/25, 11:26:26 AM	9m 57s	KHacking@getipass.com	KHacking@getipass.com	Attendee	Kathi	Hacking	khacking@getipass.com	6/05/25, 4:03:06 PM	Registered
Mohammad Ali Abdo (External)	6/06/25, 11:16:34 AM	6/06/25, 11:27:28 AM	10m 54s	maabdo@dbsterlin.com	maabdo@DBSTERLIN.COM	Attendee	Mohammad Ali	Abdo	maabdo@dbsterlin.com	5/30/25, 3:01:00 PM	Registered
16302976075	6/06/25, 11:16:40 AM	6/06/25, 11:26:48 AM	10m 8s			Attendee					
Paranhos, Bruna	6/06/25, 11:18:51 AM	6/06/25, 11:26:51 AM	7m 59s	Bruna.Paranhos@jacobs.com	Bruna.Paranhos@jacobs.com	Attendee	Bruna	Paranhos	bruna.paranhos@jacobs.com	6/02/25, 11:11:01 AM	Registered
Sergio Perez (External)	6/06/25, 11:19:11 AM	6/06/25, 11:27:11 AM	7m 59s	sergio.perez@enrx.com	pes@de.efdgroup.net	Attendee	Sergio	Perez (ENRX)	sergio.perez@enrx.com	6/02/25, 6:15:33 AM	Registered
Quinten Lindsley (External)	6/06/25, 11:26:20 AM	6/06/25, 11:26:41 AM	21s	Quinten.Lindsley@aviveterans.com	Quinten.Lindsley@aviveterans.com	Attendee	Quinten	Lindsley	quinten.lindsley@aviveterans.com	5/30/25, 4:20:31 PM	Registered
							Meredith	Krantz	meredith@krantzstrategies.com	5/30/25, 1:33:46 PM	Registered
							Jim	Laskero	jlaskero@jwincorporated.com	5/30/25, 1:34:00 PM	Registered
							Colleen	Miller	cmiller@singhinc.com	5/30/25, 1:36:25 PM	Registered
							Michael	Livermore	michael.livermore@clarkdietz.com	5/30/25, 1:43:59 PM	Registered
							Aaron	Jones	aaron@aviveterans.com	5/30/25, 1:46:38 PM	Registered
							YEMI	OYEWOLE	yoyewole@wbkengineering.com	5/30/25, 2:11:55 PM	Registered
							Mujeeb	Basha	mujeeb@aviveterans.com	5/30/25, 2:15:34 PM	Registered
							Jeffrey	Ehrhart	jehrhart@ardmoreroederick.com	5/30/25, 2:16:40 PM	Registered
							Joseph	Kozial	jkozial@bravocoeng.com	5/30/25, 2:18:28 PM	Registered
							Christine	Watley	cwatley@ardmoreroederick.com	5/30/25, 2:18:46 PM	Registered
							Robert	Cerrado	rcerrado@dbsterlin.com	5/30/25, 2:22:13 PM	Registered
							Shawn	Brodaski	sbrodaski@ardmoreroederick.com	5/30/25, 2:24:42 PM	Registered
							Jake	Bauer	jbauer@v3co.com	5/30/25, 2:34:58 PM	Registered
							Dan	Burke	dan@heckerco.com	5/30/25, 2:50:08 PM	Registered
							Major	Warren	prizeelectric@gmail.com	5/30/25, 3:09:04 PM	Registered
							Mazen	Syed	msyed@ardmoreroederick.com	5/30/25, 3:29:45 PM	Registered
							Mark	Heaton	mheaton@hanson-inc.com	5/30/25, 3:34:37 PM	Registered
							Michael	Shay	mshay@getipass.com	5/30/25, 3:44:56 PM	Registered
							Jeff	Jackowski	jjackowski@ardmoreroederick.com	5/30/25, 4:19:44 PM	Registered
							Kenneth	Hardin	khardin.energy@gmail.com	5/30/25, 8:00:44 PM	Registered
							Duana	Love	duana.love@oneatlas.com	5/30/25, 9:09:41 PM	Registered
							Pamela	Frazier	pamela@allinonelaundry.co	5/30/25, 9:23:24 PM	Registered
							Jerry	Bollman	jbollman@bollmaneng.com	5/30/25, 10:21:03 PM	Registered
							Michael	austell	austell.a.engineering@gmail.com	5/30/25, 11:02:48 PM	Registered
							Antuan	Barnes	antuanbarnes@hotmail.com	5/31/25, 3:18:14 PM	Registered
							Jarrod	Cebulski	jarrod.cebulski@rina.org	6/01/25, 4:07:28 PM	Registered
							Joseph	Bodzioch	joe@k-five.net	6/01/25, 11:27:36 PM	Registered
							Yu	Jiang	yu.jiang@oneatlas.com	6/01/25, 11:34:52 PM	Registered
							Bill	Lang	bill.lang@williamcharles.com	6/02/25, 7:54:13 AM	Registered
							Joseph	Weishaar	joseph.weishaar@williamcharles.com	6/02/25, 8:04:35 AM	Registered
							Brustin		nbrustin@ardmoreroederick.com	6/02/25, 8:09:26 AM	Registered
							Christi	Vitello	cvitello@hntb.com	6/02/25, 8:20:29 AM	Registered
							Olivia	Guo	oliviagu@oneatlas.com	6/02/25, 8:26:49 AM	Registered
							Olivia	Guo	olivia.guo@oneatlas.com	6/02/25, 8:27:14 AM	Registered
							Harvind	Singh	hkaur@singhinc.com	6/02/25, 9:19:23 AM	Registered
							Michael	Catolico	mcatolico@getipass.com	6/02/25, 9:35:01 AM	Registered
							John	Clinnin	johnclinnin@comcast.net	6/02/25, 10:36:39 AM	Registered
							Tanya	Adams	tanya.adams@wsp.com	6/02/25, 10:37:58 AM	Registered
							Mohamad	Faraj	mfaraj@getipass.com	6/02/25, 10:52:51 AM	Registered
							Matthew	Palzkill	matthew.palzkill@tylin.com	6/02/25, 11:11:24 AM	Registered
							Madison	Halsne	mhsalsne@osehinc.com	6/02/25, 11:18:21 AM	Registered
							Matt	Cooper	mcooper@icutechassist.net	6/02/25, 11:31:25 AM	Registered
							Aaron	Chanowitz	aaron.chanowitz@jacobs.com	6/02/25, 12:31:20 PM	Registered
							Jackson	Durdan	jack.durdan@strand.com	6/02/25, 1:46:29 PM	Registered
							Shaun	Shaun	sfarmer@getipass.com	6/02/25, 1:56:52 PM	Registered
							James Push	James Push	jpush@quandel.com	6/02/25, 2:02:05 PM	Registered
							Christopher	Trcka	ctrcka@jwincorporated.com	6/02/25, 2:33:42 PM	Registered
							Miguel	Trujillo	miguel.trujillo@atkinsrealis.com	6/02/25, 2:56:46 PM	Registered
							Rajiv	Iyangar	rajiv.iyangar@exp.com	6/02/25, 4:02:37 PM	Registered
							Gene	Gurevich	gene.g@electreon.com	6/03/25, 12:58:13 AM	Registered
							Charlie	Levine	charlie.l@electreon.com	6/03/25, 4:40:44 AM	Registered
							Amit	Summer Galai	amit.g@electreon.com	6/03/25, 10:04:57 AM	Registered
							Aaron	McEvoy	aaron.mcevoy@illinois.gov	6/03/25, 12:49:45 PM	Registered
							Zaynah	Arja	zaynah.arja10@gmail.com	6/03/25, 1:59:00 PM	Registered
							Reed	Panther	rpantger@getipass.com	6/03/25, 2:34:50 PM	Registered
							Adrian	Mobley	adrianm@airwellnesssafetytraining.com	6/03/25, 4:09:18 PM	Registered
							Ellissa	Mwesigwa	lmwesigwa@icutechassist.net	6/03/25, 4:39:19 PM	Registered
							Joyce	McCullum-Gye	joyce@smplowcorpchicago.com	6/04/25, 8:55:10 AM	Registered
							Thomas	Ngo	tngo@millennia.pro	6/04/25, 11:22:24 AM	Registered

Maurice	Weldon	conglomeratesllc@outlook.com	6/04/25, 12:01:33 PM	Registered
Christopher	Williams	millenniumsolarelectric@gmail.com	6/04/25, 1:12:54 PM	Registered
Mike	Martin	mmartin@geconsuttlc.com	6/04/25, 3:56:25 PM	Registered
Brian	McGowan	brian.mcgowan@oneatlas.com	6/04/25, 4:13:25 PM	Registered
Michael	Buffington	m.buffington@alphaelectricalserv.com	6/04/25, 8:29:02 PM	Registered
Michael	Petway	mlpelectric@gmail.com	6/04/25, 8:41:59 PM	Registered
Conrad	Bianchi	conrad@ecoenergy1.com	6/04/25, 10:56:20 PM	Registered
Cornelius	Hill	hillc@enspyrellc.com	6/05/25, 6:09:13 AM	Registered
Phillip	Barreda	pbarreda@icutechassist.net	6/05/25, 12:36:24 PM	Registered
kristen	bennett	kbennett@getipass.com	6/05/25, 4:40:45 PM	Registered
Keith	Whyte	keith@eeiengineers.us	6/06/25, 6:50:19 AM	Registered
Tiffany	Merrill	tmerrill@getipass.com	6/06/25, 8:01:23 AM	Registered
Jorge	Galvan	jgalvan39@gmail.com	6/06/25, 8:02:50 AM	Registered
Amy	Frankowski	amy.frankowski@exp.com	6/06/25, 8:44:03 AM	Registered
Andrew	Schlichting	arschlichting@gmail.com	6/06/25, 9:10:12 AM	Canceled
Erin	Helander	ehelander@burnsmcd.com	6/06/25, 9:14:55 AM	Canceled
Daniel	Tiltges	tiltgesd@msl-corp.com	6/06/25, 9:16:09 AM	Registered
Jorge	Galvan	jgalvan@getipass.vom	6/06/25, 9:17:29 AM	Registered
Frederick	d'Escoto	fdescoto@descotoinc.com	6/06/25, 9:34:22 AM	Registered
Angelica	Gal	angelicag@thomas-engineering.com	6/06/25, 9:35:11 AM	Registered
Beth	Tatro	btatro@rmchin.com	6/06/25, 9:47:13 AM	Registered
Tej	Shastri	tej@tecmaengineering.com	6/06/25, 10:03:38 AM	Registered
Brian	Pawula	blpawula@hornershfrin.com	6/06/25, 10:59:16 AM	Registered
Timothy	Coleman	tjcoleman@illinoistway.com	6/06/25, 11:04:14 AM	Registered

3. In-Meeting Activities

Name	Join Time	Leave Time	Duration	Email	Role
Karahalios, Alexander	6/06/25, 10:46:23 AM	6/06/25, 11:29:07 AM	42m 44s	akarahalios@getipass.com	Organizer
Thompson, Laura	6/06/25, 10:43:03 AM	6/06/25, 11:27:39 AM	44m 36s	lthompson@getipass.com	Organizer
Robles, Karyn	6/06/25, 10:43:23 AM	6/06/25, 11:27:42 AM	44m 18s	KRobles@getipass.com	Organizer
Barak, Angela	6/06/25, 11:03:26 AM	6/06/25, 11:26:58 AM	23m 31s	ABarak@getipass.com	Organizer
Bennett, Kristen	6/06/25, 11:03:40 AM	6/06/25, 11:26:27 AM	22m 47s	kbennett@getipass.com	Organizer
Perez, Lorena	6/06/25, 11:04:20 AM	6/06/25, 11:26:51 AM	22m 31s	LPerez@getipass.com	Organizer
Brigette Barr (External)	6/06/25, 10:51:22 AM	6/06/25, 10:52:21 AM	59s	bbarr@dbsterlin.com	Attendee
Brigette Barr (External)	6/06/25, 10:58:56 AM	6/06/25, 11:26:25 AM	27m 29s	bbarr@dbsterlin.com	Attendee
Prohammer, Valerie	6/06/25, 10:54:02 AM	6/06/25, 10:55:35 AM	1m 33s	VProhammer@getipass.com	Attendee
Prohammer, Valerie	6/06/25, 10:56:43 AM	6/06/25, 11:26:46 AM	30m 2s	VProhammer@getipass.com	Attendee
Alva Thomas Jr	6/06/25, 10:54:35 AM	6/06/25, 11:06:59 AM	12m 24s		Attendee
Steve Ingracia (External)	6/06/25, 10:54:43 AM	6/06/25, 10:55:42 AM	59s	Steve.Ingracia@fhueng.com	Attendee
Steve Ingracia (External)	6/06/25, 11:01:37 AM	6/06/25, 11:25:08 AM	23m 31s	Steve.Ingracia@fhueng.com	Attendee
Rodriguez, Myrtia	6/06/25, 10:54:44 AM	6/06/25, 11:03:05 AM	8m 21s	MRodriguez@getipass.com	Attendee
Rodriguez, Myrtia	6/06/25, 11:04:17 AM	6/06/25, 11:26:50 AM	22m 32s	MRodriguez@getipass.com	Attendee
Mondel, Jim	6/06/25, 10:55:00 AM	6/06/25, 11:26:41 AM	31m 41s	JMondel@getipass.com	Attendee
Rempfer, Matthew	6/06/25, 10:55:05 AM	6/06/25, 11:26:55 AM	31m 49s	Matthew.Rempfer@jacobs.com	Attendee
David Novak (External)	6/06/25, 10:55:10 AM	6/06/25, 11:24:47 AM	29m 36s	dnovak@cbbel.com	Attendee
Galvan, Jorge	6/06/25, 10:55:37 AM	6/06/25, 11:27:34 AM	31m 57s	JGalvan@getipass.com	Attendee
Don Linford (External)	6/06/25, 10:55:40 AM	6/06/25, 11:26:59 AM	31m 18s	don.linford@usu.edu	Attendee
Gancarz, Daniel	6/06/25, 10:55:44 AM	6/06/25, 11:26:27 AM	30m 42s	dgancarz@getipass.com	Attendee
Ajami, Elias	6/06/25, 10:56:13 AM	6/06/25, 10:57:13 AM	59s	eajami@getipass.com	Attendee
Ajami, Elias	6/06/25, 10:59:05 AM	6/06/25, 11:26:27 AM	27m 22s	eajami@getipass.com	Attendee
Hashim, Lilly	6/06/25, 10:56:30 AM	6/06/25, 10:59:50 AM	3m 19s	LHashim@getipass.com	Attendee
Hashim, Lilly	6/06/25, 11:04:49 AM	6/06/25, 11:26:58 AM	22m 8s	LHashim@getipass.com	Attendee
Arja, Zaynah (External)	6/06/25, 10:56:37 AM	6/06/25, 11:26:25 AM	29m 48s	Zaynah.Arja@illinois.gov	Attendee
Droz, Laura	6/06/25, 10:57:05 AM	6/06/25, 11:27:15 AM	30m 9s	LDroz@getipass.com	Attendee
Spencer, Takesha	6/06/25, 10:57:06 AM	6/06/25, 10:59:49 AM	2m 43s	TSpencer@getipass.com	Attendee
Abdillahi, Hanan (External)	6/06/25, 10:57:09 AM	6/06/25, 11:26:54 AM	29m 44s	Hanan.Abdillahi@illinois.gov	Attendee
Pekarek, Steven D (External)	6/06/25, 10:57:17 AM	6/06/25, 11:26:26 AM	29m 9s	spekarek@purdue.edu	Attendee
Banda, Vincent	6/06/25, 10:57:22 AM	6/06/25, 11:03:38 AM	6m 16s	VBanda@getipass.com	Attendee
Banda, Vincent	6/06/25, 11:06:45 AM	6/06/25, 11:26:25 AM	19m 39s	VBanda@getipass.com	Attendee
Zia Khaliq (External)	6/06/25, 10:57:33 AM	6/06/25, 11:26:55 AM	29m 21s	zkhaliq@aegrouppltd.com	Attendee
Dan Stueland (Unverified)	6/06/25, 10:57:37 AM	6/06/25, 11:26:27 AM	28m 50s		Attendee
Darryl Dawson (External)	6/06/25, 10:57:43 AM	6/06/25, 11:26:23 AM	28m 40s	ddawson@ltsengineering-ltd.com	Attendee
Hukic-Hamzic, Emina	6/06/25, 10:58:12 AM	6/06/25, 11:27:03 AM	28m 51s	EHukic-Hamzic@getipass.com	Attendee
Oyervides, Carlos (External)	6/06/25, 10:58:15 AM	6/06/25, 11:26:28 AM	28m 12s	Carlos.Oyervides@atkinsrealis.com	Attendee
Pozzessere, Kari (External)	6/06/25, 10:58:20 AM	6/06/25, 11:26:25 AM	28m 4s	Kari.Pozzessere@aecom.com	Attendee
Nick Schilling (External)	6/06/25, 10:58:33 AM	6/06/25, 11:03:00 AM	4m 27s	Nick.Schilling@czaplickilopez.com	Attendee
Nick Schilling (External)	6/06/25, 11:04:49 AM	6/06/25, 11:26:58 AM	22m 9s	Nick.Schilling@czaplickilopez.com	Attendee
Brian Manning (External)	6/06/25, 10:58:33 AM	6/06/25, 11:26:35 AM	28m 1s	BManning@parametrix.com	Attendee
Valentino, Michael	6/06/25, 10:58:41 AM	6/06/25, 10:58:48 AM	6s	MValentino@getipass.com	Attendee
Brian Rice (External)	6/06/25, 10:58:44 AM	6/06/25, 11:26:28 AM	27m 44s	brice@dbsterlin.com	Attendee
Valentino, Mike (External)	6/06/25, 10:58:52 AM	6/06/25, 11:27:25 AM	28m 33s	Mike.Valentino@wsp.com	Attendee
J S	6/06/25, 10:58:55 AM	6/06/25, 11:06:43 AM	7m 48s		Attendee

Harrington, Jennifer (External)	6/06/25, 10:58:56 AM	6/06/25, 11:26:20 AM	27m 24s	jharrington@F-W.com	Attendee
Emily Klemptner (External)	6/06/25, 10:58:56 AM	6/06/25, 11:26:27 AM	27m 30s	eklemptner@singhinc.com	Attendee
Fleming, Aislinn E. (External)	6/06/25, 10:58:58 AM	6/06/25, 11:26:27 AM	27m 28s	aifleming@gfnet.com	Attendee
Cuenca, Isaac	6/06/25, 10:59:04 AM	6/06/25, 11:29:07 AM	30m 2s	lcuenca@getipass.com	Attendee
Ramos, Vanessa	6/06/25, 10:59:06 AM	6/06/25, 11:26:54 AM	27m 47s	VRamos@getipass.com	Attendee
Howe, Ruth	6/06/25, 10:59:09 AM	6/06/25, 11:26:27 AM	27m 17s	RAHowe@getipass.com	Attendee
Antonio Vercillo (External)	6/06/25, 10:59:10 AM	6/06/25, 11:03:25 AM	4m 15s	AVercillo@dbsterlin.com	Attendee
Antonio Vercillo (External)	6/06/25, 11:04:49 AM	6/06/25, 11:26:25 AM	21m 35s	AVercillo@dbsterlin.com	Attendee
Brian Scifers	6/06/25, 10:59:14 AM	6/06/25, 11:26:56 AM	27m 41s	bscifers@se3.us	Attendee
Rafael Herrera	6/06/25, 10:59:15 AM	6/06/25, 11:26:56 AM	27m 40s	rherrera@se3.us	Attendee
Lesley January (External)	6/06/25, 10:59:27 AM	6/06/25, 11:26:58 AM	27m 30s	LJanuary@JWIncorporated.com	Attendee
Eric Walters (Unverified)	6/06/25, 10:59:28 AM	6/06/25, 11:26:52 AM	27m 24s		Attendee
Reilly, Greg (External)	6/06/25, 10:59:31 AM	6/06/25, 11:26:45 AM	27m 13s	Greg.Reilly@aecom.com	Attendee
Rajpurkar, Amar [US-US]	6/06/25, 10:59:33 AM	6/06/25, 11:26:27 AM	26m 53s	Amar.Rajpurkar@parsons.com	Attendee
Klein, Nicholas (External)	6/06/25, 10:59:34 AM	6/06/25, 11:26:16 AM	26m 42s	Nicholas.Klein@illinois.gov	Attendee
Mohammed Rashed (External)	6/06/25, 10:59:39 AM	6/06/25, 11:01:43 AM	2m 3s	mrashed@dbsterlin.com	Attendee
Pieniazek, Dave (External)	6/06/25, 10:59:41 AM	6/06/25, 11:26:27 AM	26m 46s	Dave.Pieniazek@stantec.com	Attendee
Margaret Jones (External)	6/06/25, 10:59:41 AM	6/06/25, 11:26:50 AM	27m 8s	mjoness@innercitycubes.com	Attendee
Forbes, Jackie	6/06/25, 10:59:47 AM	6/06/25, 11:26:27 AM	26m 40s	JForbes@getipass.com	Attendee
Nick Benavides (Unverified)	6/06/25, 10:59:50 AM	6/06/25, 11:26:26 AM	26m 36s		Attendee
Laura Rogers (External)	6/06/25, 10:59:50 AM	6/06/25, 11:26:25 AM	26m 34s	LauraRogers@LaurelGroupLLC.onmicros	Attendee
Zeman, Benjamin	6/06/25, 10:59:57 AM	6/06/25, 11:26:48 AM	26m 51s	Benjamin.Zeman@hdrinc.com	Attendee
Deja Monroe (External)	6/06/25, 10:59:57 AM	6/06/25, 11:26:52 AM	26m 55s	DMonroe@infrastructure-eng.com	Attendee
Smith, Brian (Chicago) (External)	6/06/25, 11:00:05 AM	6/06/25, 11:26:23 AM	26m 17s	brian.smith@aecom.com	Attendee
Diana Briones (Unverified)	6/06/25, 11:00:07 AM	6/06/25, 11:26:24 AM	26m 17s		Attendee
Zorn, Mike (External)	6/06/25, 11:00:15 AM	6/06/25, 11:15:29 AM	15m 13s	mzorn@hwlochner.com	Attendee
Williams, Cynthia	6/06/25, 11:00:23 AM	6/06/25, 11:26:53 AM	26m 29s	CMWilliams@getipass.com	Attendee
Gabi Garcia	6/06/25, 11:00:25 AM	6/06/25, 11:03:04 AM	2m 39s		Attendee
Gabi Garcia	6/06/25, 11:04:49 AM	6/06/25, 11:26:23 AM	21m 33s		Attendee
Kupko, Jeffrey (External)	6/06/25, 11:00:29 AM	6/06/25, 11:26:22 AM	25m 53s	Jeffrey.Kupko@mbakerintl.com	Attendee
Walter Chornomaz (External)	6/06/25, 11:00:33 AM	6/06/25, 11:26:48 AM	26m 14s	wchornomaz@sqna.com	Attendee
Greg Osborne (External)	6/06/25, 11:00:34 AM	6/06/25, 11:27:01 AM	26m 27s	gosborne@epsteinglobal.com	Attendee
Robinson, James (External)	6/06/25, 11:00:34 AM	6/06/25, 11:26:35 AM	26m 1s	jrobinson@burnsmcd.com	Attendee
Stefan Tongur	6/06/25, 11:00:36 AM	6/06/25, 11:26:54 AM	26m 18s		Attendee
Charles Frangos (External)	6/06/25, 11:00:36 AM	6/06/25, 11:26:08 AM	25m 31s	cfrangos@orionengineersllc.com	Attendee
Mohsen Farahany (External)	6/06/25, 11:00:40 AM	6/06/25, 11:26:24 AM	25m 43s	MFarahany@RME-i.com	Attendee
Carl Wendell (External)	6/06/25, 11:00:42 AM	6/06/25, 11:29:07 AM	28m 25s	Carl.wendell@aviveterans.com	Attendee
Cameron, Becca	6/06/25, 11:00:42 AM	6/06/25, 11:26:51 AM	26m 8s	Becca.Cameron@jacobs.com	Attendee
Jason Martin	6/06/25, 11:00:43 AM	6/06/25, 11:03:18 AM	2m 34s	jmartin@se3.us	Attendee
Jason Martin	6/06/25, 11:04:49 AM	6/06/25, 11:13:41 AM	8m 52s	jmartin@se3.us	Attendee
Myers, Lindia	6/06/25, 11:00:56 AM	6/06/25, 11:29:07 AM	28m 10s	LMyers@getipass.com	Attendee
Ciara Gormley (External)	6/06/25, 11:00:57 AM	6/06/25, 11:26:26 AM	25m 28s	ciara.gormley@tylin.com	Attendee
Wolpert, Andrew	6/06/25, 11:00:59 AM	6/06/25, 11:26:54 AM	25m 54s	Andrew.Wolpert@jacobs.com	Attendee
Austin Provost (External)	6/06/25, 11:01:02 AM	6/06/25, 11:26:48 AM	25m 45s	austin.provost@oneatlas.com	Attendee
Daniels, Ann (External)	6/06/25, 11:01:03 AM	6/06/25, 11:16:44 AM	15m 41s	Ann.Daniels@rsandh.com	Attendee
Brian Marshall (External)	6/06/25, 11:01:04 AM	6/06/25, 11:23:09 AM	22m 5s	bmarshall2@olsson.com	Attendee
Samina Saleem (External)	6/06/25, 11:01:04 AM	6/06/25, 11:26:48 AM	25m 44s	ssaleem@innovaconsultinc.com	Attendee
Hammerl, Chad	6/06/25, 11:01:04 AM	6/06/25, 11:26:47 AM	25m 42s	Chad.Hammerl@jacobs.com	Attendee
Blalack, Tallis (External)	6/06/25, 11:01:08 AM	6/06/25, 11:26:49 AM	25m 41s	Tallis.Blalack@mbakerintl.com	Attendee
Esquivel, Dennis (External)	6/06/25, 11:01:09 AM	6/06/25, 11:26:15 AM	25m 6s	Dennis.Esquivel@illinois.gov	Attendee
Jeffrey Hoyos (External)	6/06/25, 11:01:12 AM	6/06/25, 11:26:57 AM	25m 44s	jhoynos@HNTB.com	Attendee
Thomas Szabo (External)	6/06/25, 11:01:17 AM	6/06/25, 11:27:28 AM	26m 10s	Thomas.Szabo@oneatlas.com	Attendee
Wes Brazas	6/06/25, 11:01:19 AM	6/06/25, 11:26:58 AM	25m 38s	wes.brazas@amesengineeringinc.com	Attendee
ClemmonsStott, Lisa (External)	6/06/25, 11:01:19 AM	6/06/25, 11:27:09 AM	25m 49s	Lisa.ClemmonsStott@illinois.gov	Attendee
Shyam Raj (External)	6/06/25, 11:01:33 AM	6/06/25, 11:29:07 AM	27m 33s	sraja@aaaengineering.net	Attendee
Hengesbach,Theodor John	6/06/25, 11:01:38 AM	6/06/25, 11:26:15 AM	24m 37s	thengesbach@getipass.com	Attendee
Reed, Wayne (External)	6/06/25, 11:01:44 AM	6/06/25, 11:26:27 AM	24m 43s	Wayne.Reed@atkinsrealis.com	Attendee
Martin, Kathryn (External)	6/06/25, 11:01:45 AM	6/06/25, 11:26:51 AM	25m 6s	Kathryn.Martin@illinois.gov	Attendee
Kat Porter (External)	6/06/25, 11:01:46 AM	6/06/25, 11:25:22 AM	23m 36s	kporter@deg-america.com	Attendee
Richard Young (External)	6/06/25, 11:02:01 AM	6/06/25, 11:26:26 AM	24m 24s	Richard.Young@oneatlas.com	Attendee
Liu, Meiyou	6/06/25, 11:02:02 AM	6/06/25, 11:26:46 AM	24m 44s	mliu@getipass.com	Attendee
Mike Harrell (Unverified)	6/06/25, 11:02:05 AM	6/06/25, 11:27:08 AM	25m 2s		Attendee
Scott Cain (External)	6/06/25, 11:02:07 AM	6/06/25, 11:26:22 AM	24m 15s	scott.cain@oneatlas.com	Attendee
Juan Lopez (External)	6/06/25, 11:02:15 AM	6/06/25, 11:26:43 AM	24m 28s	juan@foundationmech.com	Attendee
Panther, Reed	6/06/25, 11:02:18 AM	6/06/25, 11:27:05 AM	24m 47s	rpanther@getipass.com	Attendee
Kyle Duffy (External)	6/06/25, 11:02:25 AM	6/06/25, 11:26:24 AM	23m 59s	kmduffy@gtinc.com	Attendee
Robert Boro (External)	6/06/25, 11:02:33 AM	6/06/25, 11:27:13 AM	24m 40s	robert.boro@hbmeng.com	Attendee
John Yonan (External)	6/06/25, 11:02:36 AM	6/06/25, 11:26:49 AM	24m 12s	yonan@collinsengr.com	Attendee
Kucharski, Adam	6/06/25, 11:02:46 AM	6/06/25, 11:26:23 AM	23m 37s	Adam.Kucharski@kimley-horn.com	Attendee
Kirby, Mara [US-US]	6/06/25, 11:02:51 AM	6/06/25, 11:26:25 AM	23m 34s	Mara.Kirby@parsons.com	Attendee
Arnold Kasemsarn / DAMA (Unverified)	6/06/25, 11:02:55 AM	6/06/25, 11:27:16 AM	24m 21s		Attendee
Durkin, Laura	6/06/25, 11:03:04 AM	6/06/25, 11:26:32 AM	23m 28s	LDurkin@getipass.com	Attendee

Thompson, Shawn	6/06/25, 11:03:16 AM	6/06/25, 11:12:29 AM	9m 13s	Shawn.Thompson@jacobs.com	Attendee
Brian Castro (External)	6/06/25, 11:03:28 AM	6/06/25, 11:26:50 AM	23m 22s	bcastro@aaaengineering.net	Attendee
Sicong Pei	6/06/25, 11:03:29 AM	6/06/25, 11:26:55 AM	23m 25s		Attendee
Henao, Chris (External)	6/06/25, 11:03:29 AM	6/06/25, 11:26:21 AM	22m 52s	Christopher.Henao@aecom.com	Attendee
Brink, Michael	6/06/25, 11:03:34 AM	6/06/25, 11:27:06 AM	23m 32s	mbrink@getipass.com	Attendee
Tiffany Buchanan (External)	6/06/25, 11:03:34 AM	6/06/25, 11:26:50 AM	23m 16s	TBuchanan@ICUTechAssist.net	Attendee
Justin Cook (External)	6/06/25, 11:03:39 AM	6/06/25, 11:27:01 AM	23m 21s	justin.cook@innleadair.com	Attendee
Stephanie Wong (External)	6/06/25, 11:03:42 AM	6/06/25, 11:26:32 AM	22m 50s	swong@swe-solutions.com	Attendee
Malinowski, Bridget (External)	6/06/25, 11:03:42 AM	6/06/25, 11:26:52 AM	23m 10s	Bridget.Malinowski@aecom.com	Attendee
Miller, Sam (External)	6/06/25, 11:04:01 AM	6/06/25, 11:26:26 AM	22m 25s	sdmiller@uillinois.edu	Attendee
Seagrave, Ann	6/06/25, 11:04:24 AM	6/06/25, 11:26:24 AM	21m 59s	ASeagrave@getipass.com	Attendee
Nicole Rose (Unverified)	6/06/25, 11:04:24 AM	6/06/25, 11:28:40 AM	24m 16s		Attendee
LaWanda Jones (External)	6/06/25, 11:04:49 AM	6/06/25, 11:26:59 AM	22m 9s	LJones@abnacorp.com	Attendee
Roderick Drew (External)	6/06/25, 11:05:26 AM	6/06/25, 11:26:55 AM	21m 28s	rdrew@HNTB.com	Attendee
Athreya Sreenivasan (External)	6/06/25, 11:05:33 AM	6/06/25, 11:26:27 AM	20m 54s	ASreenivasan@parametrix.com	Attendee
James Williams (External)	6/06/25, 11:05:50 AM	6/06/25, 11:26:49 AM	20m 58s	jwilliams@abnacorp.com	Attendee
Andrew Schlichting (External)	6/06/25, 11:05:52 AM	6/06/25, 11:07:22 AM	1m 30s	aschlichting@cmtengr.com	Attendee
Nolan, Kevin P.	6/06/25, 11:06:08 AM	6/06/25, 11:29:07 AM	22m 58s	Kevin.Nolan@stvinc.com	Attendee
Kumari Celestin (External)	6/06/25, 11:06:44 AM	6/06/25, 11:26:53 AM	20m 8s	kcelestin@ICUTechAssist.net	Attendee
Mancillas, Pam	6/06/25, 11:07:01 AM	6/06/25, 11:26:54 AM	19m 53s	pmancillas@getipass.com	Attendee
Hall, Danna	6/06/25, 11:07:04 AM	6/06/25, 11:26:28 AM	19m 23s	DHall@getipass.com	Attendee
Alva Thomas (External)	6/06/25, 11:07:19 AM	6/06/25, 11:26:25 AM	19m 6s	AThomas@icutechassist.net	Attendee
Adenike Fasanya-Osilaja (External)	6/06/25, 11:07:25 AM	6/06/25, 11:27:16 AM	19m 51s	Afosilaja@abnacorp.com	Attendee
Coleman, Timothy	6/06/25, 11:07:50 AM	6/06/25, 11:26:21 AM	18m 30s	TJColeman@getipass.com	Attendee
Weiss, Maria (External)	6/06/25, 11:07:56 AM	6/06/25, 11:26:33 AM	18m 36s	Maria.Weiss@stantec.com	Attendee
David Peters (External)	6/06/25, 11:08:20 AM	6/06/25, 11:26:26 AM	18m 5s	David@LaurelGroupLLC.onmicrosoft.com	Attendee
Brian Pawula (External)	6/06/25, 11:08:46 AM	6/06/25, 11:29:07 AM	20m 20s	blpawula@homershifrin.com	Attendee
Gayla Nunn (External)	6/06/25, 11:08:54 AM	6/06/25, 11:26:24 AM	17m 30s	GNunn@abnacorp.com	Attendee
13319985448	6/06/25, 11:09:02 AM	6/06/25, 11:26:48 AM	17m 46s		Attendee
Rhonda Garrett (External)	6/06/25, 11:10:11 AM	6/06/25, 11:26:55 AM	16m 44s	RGarrett@ccjm.com	Attendee
Riley White (External)	6/06/25, 11:15:59 AM	6/06/25, 11:26:47 AM	10m 48s	rwhite@ardmoreroederick.com	Attendee
Hacking, Kathi	6/06/25, 11:16:29 AM	6/06/25, 11:26:26 AM	9m 57s	KHacking@getipass.com	Attendee
Mohammad Ali Abdo (External)	6/06/25, 11:16:34 AM	6/06/25, 11:27:28 AM	10m 54s	maabdo@dbsterlin.com	Attendee
16302976075	6/06/25, 11:16:40 AM	6/06/25, 11:26:48 AM	10m 8s		Attendee
Paranhos, Bruna	6/06/25, 11:18:51 AM	6/06/25, 11:26:51 AM	7m 59s	Bruna.Paranhos@jacobs.com	Attendee
Sergio Perez (External)	6/06/25, 11:19:11 AM	6/06/25, 11:27:11 AM	7m 59s	sergio.perez@enrx.com	Attendee
Quinten Lindsley (External)	6/06/25, 11:26:20 AM	6/06/25, 11:26:41 AM	21s	Quinten.Lindsley@aviveterans.com	Attendee