

PROFESSIONAL SERVICES BULLETIN 25-1

ADDENDUM No. 1

ADDENDUM No. 1 does not change the due date or time.

STATEMENTS OF INTEREST (SOIs) are due by 4:30:00 p.m. (Central Time)

Due Date: March 14, 2025

Successful Firm(s) will be notified.

Overall results will be posted on the Illinois Chief Procurement Officer's eProcurement System at: <https://www.bidbuy.illinois.gov/>

Professional Services Bulletin

No. 25-1

February 18, 2025

ILLINOIS TOLLWAY website: www.illinoistollway.com



Illinois Tollway
2700 Ogden Avenue, Downers Grove, IL 60515

ADDENDUM NO 1
TO
PROFESSIONAL SERVICES BULLETIN No 25-1

February 18, 2025

Addendum No. 1 does not change the due date or time.

Included with this Addendum is the Pre-Proposal Presentation and Attendee list.

NEW TO THIS PSB

An optional Pre-Proposal Meeting will be held on February 14, 2025, at 10:00 a.m. (CT) via Microsoft Teams.

e-Builder is now Trimble Unity Construct. If you are currently registered in e-Builder, your user ID will be active in Trimble.

TABLE OF CONTENTS

PART I: THE SCHEDULE

1.1	CONTACT INFORMATION	3
1.2	OFFICIAL NOTICE	3-4
1.3	ACCEPTANCE OF SCANNED SIGNATURES	4
1.4	PSB ITEM INDEX	5-6
1.5	PSB ITEM DETAILS	A-1-A-27

PART II: CONTRACT CLAUSES AND REQUIREMENTS

2.1	CONSULTANT/SUBCONSULTANT CONFLICTS OF INTEREST WITHIN TOLLWAY PROJECTS	7
2.2	INSPECTOR GENERAL	8
2.3	FINANCIAL INFORMATION	8-9
2.4	ILLINOIS TOLLWAY'S CONTRACT PAYMENT POLICY	9
2.5	DISADVANTAGED BUSINESS ENTERPRISE (DBE) PARTICIPATION	9-11
2.6	PARTNERING FOR GROWTH PROGRAM GUIDELINES	11
2.7	STATE OF ILLINOIS VETERAN SMALL BUSINESS PARTICIPATION AND UTILIZATION PLAN	11-12
2.8	TEAMING AGREEMENT	12-13
2.9	MANUALS, PROCESSES AND GUIDELINES	13
2.10	PHASE II: DESIGN ENGINEERING SERVICES	13
2.11	PHASE III: CONSTRUCTION ENGINEERING SERVICES	13-14
2.12	CONSTRUCTION AND QUALITY ASSURANCE CONSULTANTS	14
2.13	QUALITY ASSURANCE PREQUALIFICATION CATEGORY	14
2.14	CLARIFICATION OF QUALITY CONTROL/QUALITY ASSURANCE REQUIREMENTS	14
2.15	CONSULTANT CONTRACT FORMS	15
2.16	SELF-PERFORMANCE	15

PART III: REPRESENTATIONS AND INSTRUCTIONS

3.1	SELECTION CRITERIA	15
3.2	SCHEDULE FOR CONSULTANT SELECTION	16
3.3	GUIDELINES FOR SUBMITTING SOI	16-18
3.4	SUBMITTAL INSTRUCTIONS	18-23
3.5	DISCLOSURES AND CERTIFICATIONS	24
3.6	PROTEST PROCEDURE	25
3.7	USEFUL LINKS	26
3.8	ILLINOIS EPROCUREMENT BIDBUY NOTICE	26
3.9	INFORMATION ON ACCESSING THE ILLINOIS TOLLWAY WEBSITE	27
3.10	FUTURE PROFESSIONAL SERVICES BULLETIN NOTIFICATIONS	28
3.11	RESERVED	28
3.12	EXCHANGES WITH FIRMS AFTER SOI SUBMISSION	29

PART I: THE SCHEDULE

1.1 CONTACT INFORMATION

Illinois State Toll Highway Authority (ISTHA)
2700 Ogden Avenue
Downers Grove, IL 60515

PSB 25-1 Coordinator: csstaff@getipass.com

PSB 25-1 Tech Support: wbpm@getipass.com

PSB 25-1 Trimble Unity Construct Training: wbpm@getipass.com

-

1.2 25-1 OFFICIAL NOTICE

This Professional Services Bulletin 25-1 (PSB 25-1) is the official notice of needed professional services for the Illinois State Toll Highway Authority ("Illinois Tollway", "Tollway"), as authorized by the Architectural, Engineering, and Land Surveying Qualifications Based Selection Act, (30 ILCS 535/1, *et seq.*). This PSB contains information pertaining to the advertisement for Statements of Interest (SOI) and is part of the Chief Procurement Officer eProcurement System for the Illinois State Toll Highway Authority. PSB **25-1**, including all Exhibits and forms, is available on the Illinois Tollway's website at: <https://www.illinoistollway.com/doing-business/construction-engineering/bids-bulletins-awards>. Additional information is also posted on the Illinois Chief Procurement Officer's eProcurement System at: <https://www.bidbuy.illinois.gov/>. For instructions on accessing the Illinois Tollway website, PSB, and Exhibits please refer to the Table of Contents. Instructions on receiving procurement opportunities are included in the "Illinois eProcurement BidBuy Notice" section of this PSB.

1.2.1 PSB 25-1 SUMMARY

Information for the Trimble Unity Construct (Trimble) process for PSB **25-1** can be found in the Public Folder at: <https://app.e-builder.net/public/publicLanding.aspx?QS=8b550cb238ba4d768a53aa87d3c9cdcd>

You will need the following before you can submit an SOI in Trimble:

- Trimble resources, including PSB SOI user manual, FAQ file, and videos (see Public Folder link above)
- Webinar Training (see Section 3.7 Useful Links for training webinar registration link)
- Trimble Login ID (see Section 3.4 Submittal Instructions)
- Firm Code Name (see Section 3.4 Submittal Instructions)

An optional pre-proposal meeting will be held on Friday, February 14, 2025, at 10:00 a.m. (CT) Via Microsoft Teams.

Register here: <https://events.gcc.teams.microsoft.com/event/2fc64b68-9ed5-47a9-99ac-4d223bee359e@48475f88-04d3-4aa6-ae94-21dcfec788aa>

All questions related to this PSB must be submitted electronically through the Trimble SOI Mailbox at [PSB_25-1.01 Questions and RFIs@docs.e-builder.net](mailto:PSB_25-1.01_Questions_and_RFIs@docs.e-builder.net) no later than **March 3, 2025 at 4:30:00 pm (CT)**. The subject line should read: PSB 25-1 Question. Answers will be addressed via an Addendum published on the Tollway website and the Illinois eProcurement site, BidBuy. For Trimble technical questions, please contact the Trimble PSB Tech Support: wbpm@getipass.com.

This is not an invitation for bids. Consultants properly prequalified for the projects listed herein may indicate their desire to be considered for selection by submitting an SOI to the Illinois Tollway via the Trimble PSB **25-1** SOI process.

The Illinois Tollway follows the Qualifications Based Selection (QBS) process mandated by Illinois statute (30 ILCS 535): Architectural, Engineering, and Land Surveying Qualifications Based Selection Act for selecting qualified Consultants under this PSB.

1.3 ACCEPTANCE OF SCANNED SIGNATURES

Unless otherwise specified, the parties agree that proposals, contracts, certifications and disclosures, and other contract related documents to be entered into in connection with the resulting contract will be considered signed when the signature of a party is delivered by scanned image (e.g. .pdf or .tiff file extension name) as an attachment to the Trimble PSB SOI process. Such scanned signature will be treated in all respects as having the same effect as an original signature.

1.4 PROFESSIONAL SERVICES BULLETIN NO. 25-1 ITEM INDEX

No.	Project No. / County	Description	Page No.
1	I-25-2000 DuPage County	Illinois Route 390 Construction, Lake Street to County Farm Road, Phase II Engineering Services	A-1–A-2
2	I-25-2001 Cook County	Tri-State Tollway (I-294), Bridge Reconstruction from 107th Street to Illinois Route 43 (Harlem Avenue), Phase II Engineering Services	A-3–A-4
3	I-25-2002 Cook County	Tri-State Tollway (I-294), Bridge Reconstruction at Vincennes Road and Chicago Road, Phase II Engineering Services	A-5–A-6
4	I-25-2003 Cook County	Tri-State Tollway (I-294), Bridge Reconstruction at Union Pacific Railroad (UPRR), Phase II Engineering Services	A-7–A-8
5	I-25-2004 Cook County	Tri-State Tollway (I-294), Bridge Reconstruction at CSX Railroad, Phase II Engineering Services	A-9–A-10
6	I-25-2005 DuPage County	Reagan Memorial Tollway (I-88), Bridge Reconstruction at Canadian National Railway, Phase II Engineering Services	A-11–A-12
7	I-25-2006 Lake and Cook Counties	Tri-State Tollway (I-94/I-294), Plaza Improvements, Phase II Engineering Services	A-13–A-14
8	I-25-2007 Winnebago, Boone, DeKalb and Kane Counties	Jane Addams Memorial Tollway (I-90) and Reagan Memorial Tollway (I-88), Plaza Improvements, Phase II Engineering Services	A-15–A-16
9	I-25-2008 DuPage County	Reagan Memorial Tollway (I-88) and Veterans Memorial Tollway (I-355), Plaza Improvements, Phase II Engineering Services	A-17–A-18
10	I-25-2009 DuPage, Cook and Will Counties	Veterans Memorial Tollway (I-355), Plaza Improvements, Phase II Engineering Services	A-19–A-20
11	RR-25-2010 Winnebago County	Jane Addams Memorial Tollway (I-90), Roadway and Bridge Rehabilitation from Rockton Road (Mile Post 2.6) to Kishwaukee River (Mile Post 18.3), Phase II Engineering Services	A-21–A-22

No.	Project No. / County	Description	Page No.
12	RR-25-4988 Systemwide	Systemwide, Design Services Upon Request. On-call and as-needed Phase II Engineering Services.	A-23
13	I-24-4764 Cook & DuPage	Elgin O'Hare Western Access (I-490), Construction Management Services Upon Request. On-call and as-needed Construction Management Services.	A-24
14	I-25-2011 Cook County	Tri-State Tollway (I-294), Construction Management Services Upon Request. On-call and as-needed Construction Management Services.	A-25
15	I-25-2012 Cook County	Tri-State Tollway (I-294), ITS Improvements, Construction Management Services	A-26
16	RR-25-9302 Systemwide	Systemwide, ITS Construction Management Services Upon Request. On-call and as-needed Construction Management Services.	A-27

1.5 PSB ITEM DETAILS

1.5.1 Item 1: I-25-2000, Illinois Route 390 Construction, Lake Street to County Farm Road, Phase II Engineering Services

This project has a 26% D/M/WBE participation goal and 3% VOSB participation goal.

Phase II engineering services are required for the preparation of contract drawings, specifications and project related permits for roadway construction along Illinois Route 390 between Lake Street and County Farm Road in DuPage County, Illinois. The project limits generally include Illinois Route 390 from Lake Street to County Farm Road, Lake Street from Ontarioville Road to Greenbook Boulevard, and County Farm Road from Ontarioville Road to Greenbook Boulevard.

The work generally encompasses roadway and interchange design and shall include, but not be limited to, the design for the following items:

- Construction of new Illinois Route 390 Tollway extension to County Farm Road
- Reconstruction of ramps at Illinois Route 390 and Lake Street
- Bridge deck overlay of the Lake Street Bridge over Illinois Route 390
- Traffic signal installation at the new Illinois Route 390 and County Farm Road interchange
- Widening of County Farm Road
- Installation of a shared use path along County Farm Road
- Grading, landscaping, and noise wall improvements
- Installation of a new drainage system and modification of the existing drainage system
- Roadway lighting installation
- Signing and pavement marking improvements
- Erosion and sediment control installation

The work shall also include the following:

- Geotechnical services
- Design of appropriate landscape and evaluation of soil erosion and sedimentation control measures and earthwork as necessary in accordance with the Tollway's Environmental Studies manual.
- Barrier warrant analysis
- Preparing Maintenance of Traffic plans, including providing alternative concepts for traffic and construction staging as appropriate, for the mainline toll highways and local roadways
- Utility coordination for protection and/or relocation of utilities
- Phase III support during construction
- All other appurtenant and miscellaneous items

Construction Estimate: Category C

The Prime Consultant must be prequalified by IDOT in the following categories:

Highways (Freeways)
Location/Design Studies (New Construction/Major Reconstruction)
Environmental Reports (Environmental Assessment)
Special Studies (Location Drainage)
Special Plans (Lighting: Complex)
Structures (Highway Bridges: Typical)
Special Services (Surveying)
Special Plans (Traffic Signals)

The Tollway will allow a Prime consultant to meet the prequalification for Environmental Reports (Environmental Assessment), Special Studies (Location Drainage), Special Plans (Lighting: Complex), Structures (Highway Bridges: Typical), Special Services (Surveying), and Special Plans (Traffic Signals) through a subconsultant(s).

Key personnel listed on Exhibit A for this project must include:

- Project Manager (must be an Illinois Licensed Professional Engineer).
- Project Engineer, that individual in charge who is directly involved in the development of the contract documents (must be an Illinois Licensed Professional Engineer).
- Roadway designer, who will be responsible for roadway design related issues (must be an Illinois Licensed Professional Engineer).
- Structural designer, who will be responsible for structural design related issues (must be an Illinois Licensed Structural Engineer).
- Drainage designer, who will be responsible for drainage design related issues (must be an Illinois Licensed Professional Engineer).
- The Environmental Lead (EL), who will be responsible with coordinating the DSE team's environmental studies.
- QC/QA reviewer of all milestone submittals, who must be an Illinois Licensed Professional Engineer for roadway elements, or an Illinois Licensed Structural Engineer for structural elements.

Schedule: This project is scheduled to start in 2025. The substantial completion date for this project will be approximately 54 months after authorization to proceed inclusive of completion of Phase III support services during construction. Phase II design services are anticipated to be completed approximately 24 months after authorization to proceed. Final schedule will be determined at the time of negotiation.

The Consultant must have MicroStation capabilities. All final documents shall be submitted in hard copy and electronic format, including a 3-D Model, and follow the CADD Standards Manual. This project will be managed through the Tollway's web-based project management system. The Consultant will be required to participate in these procedures and will receive training on the system. The Tollway will furnish the Consultant with guidelines for the Consultant's Quality Program (CQP). The CQP is due fourteen (14) days after Notice to Proceed. The Consultant who is selected for this project will be notified and scheduled to attend a scope briefing with the Illinois Tollway.

1.5.2 Item 2 I-25-2001, Tri-State Tollway (I-294), Bridge Reconstruction from 107th Street to Illinois Route 43 (Harlem Avenue), Phase II Engineering Services

This project has a 27% D/M/WBE participation goal and 3% VOS/SDVOSBE participation goal.

Phase II engineering services are required for the preparation of contract drawings, specifications and project related permits for the reconstruction of various mainline bridges along the Tri-State Tollway (I-294) between 107th Street (Mile Post 15.6) and Illinois Route 43 (Harlem Avenue) (Mile Post 16.8) in Cook County, Illinois.

The work generally encompasses bridge reconstruction design, and shall include, but not be limited to, the following items:

- Roadway design
- Structural design
- Bridge Type Studies
- Type, Size and Location (TS&L) plan preparation
- Environmental services
- Geotechnical services
- Lighting design
- Drainage design
- Maintenance of traffic design including that associated with local roadways
- Barrier warrant analysis
- Landscaping and soil erosion/sedimentation control design
- Pavement markings, delineators and signage design as necessary
- Utility coordination and design for protection and / or relocation of utilities
- Railroad coordination and preparation of documents for Railroad review and approval
- Phase III support during construction
- All other appurtenant and miscellaneous items

The following structures are included in this project:

- I-294 over 107th Street (2 structures)
- I-294 over Norfolk Southern Railroad (2 structures)
- I-294 over Southwest Highway (2 structures)
- I-294 over Stony Creek (culvert)
- I-294 over Illinois Route 43 (Harlem Avenue) (2 structures)

Construction Estimate: Category F

The prime firm must be prequalified by IDOT in the following categories:

Structures (Highway Bridges: Typical)

Highways (Freeways)

Highways (Roads and Streets)

Special Studies (Location Drainage)

The Tollway will allow a prime consultant to meet the prequalification for Highways (Roads and Streets) and Special Studies (Location Drainage) through a subconsultant(s).

Key personnel listed on Exhibit A for this project must include:

- Project Manager (must be an Illinois Licensed Professional Engineer or Structural Engineer).
- Project Engineer, that individual in charge who is directly involved in the development of the contract documents (must be an Illinois Licensed Professional Engineer).
- Roadway designer, who will be responsible for roadway design related issues (must be an Illinois Licensed Professional Engineer).
- Structural designer, who will be responsible for structural design related issues (must be an Illinois Licensed Structural Engineer).
- Drainage designer, who will be responsible for drainage design related issues (must be an Illinois Licensed Professional Engineer).

- QC/QA reviewer of all milestone submittals, who must be an Illinois Licensed Professional Engineer for roadway elements, or an Illinois Licensed Structural Engineer for structural elements.

Schedule: This project is scheduled to start in 2025. The substantial completion date for this project will be approximately 54 months after authorization to proceed inclusive of completion of Phase III support services during construction. Phase II design services are anticipated to be completed approximately 24 months after authorization to proceed. Final schedule will be determined at the time of negotiation.

The Consultant must have MicroStation capabilities. All final documents shall be submitted in hard copy and electronic format, including a 3-D Model, and follow the CADD Standards Manual. This project will be managed through the Tollway's web-based project management system. The Consultant will be required to participate in these procedures and will receive training on the system. The Tollway will furnish the Consultant with guidelines for the Consultant's Quality Program (CQP). The CQP is due fourteen (14) days after Notice to Proceed. The Consultant who is selected for this project will be notified and scheduled to attend a scope briefing with the Illinois Tollway.

1.5.3 Item 3 I-25-2002, Tri-State Tollway (I-294), Bridge Reconstruction at Vincennes Road and Chicago Road, Phase II Engineering Services

This project has a 26% D/M/WBE participation goal and 3% VOS/SDVOSBE participation goal.

Phase II engineering services are required for the preparation of contract drawings, specifications and project related permits for the reconstruction of the Vincennes Road bridge over the Tri-State Tollway (I-294) at Mile Post 1.6 and the Chicago Road Bridge over the Tri-State Tollway (I-294) at Mile Post 1.2 Cook County, Illinois.

The work generally encompasses bridge reconstruction design, and shall include, but not be limited to, the following items:

- Roadway design
- Structural design
- Bridge Type Studies
- Type, Size and Location (TS&L) plan preparation
- Environmental services
- Geotechnical services
- Lighting design
- Drainage design
- Maintenance of traffic design including that associated with local roadways
- Barrier warrant analysis
- Landscaping and soil erosion/sedimentation control design
- Pavement markings, delineators and signage design as necessary
- Utility coordination and design for protection and / or relocation of utilities
- Phase III support during construction
- All other appurtenant and miscellaneous items

The following structures are included in this project:

- Vincennes Road bridge over I-294
- Chicago Road bridge over I-294

Construction Estimate: Category B

The prime firm must be prequalified by IDOT in the following categories:

Structures (Highway Bridges: Typical)
Highways (Freeways)
Highways (Roads and Streets)

The Tollway will allow a prime consultant to meet the prequalification for Highways (Freeways), and Highways (Roads and Streets) through a subconsultant(s).

Key personnel listed on Exhibit A for this project must include:

- Project Manager (must be an Illinois Licensed Professional Engineer or Structural Engineer).
- Project Engineer, that individual in charge who is directly involved in the development of the contract documents (must be an Illinois Licensed Professional Engineer).
- Roadway designer, who will be responsible for roadway design related issues (must be an Illinois Licensed Professional Engineer).
- Structural designer, who will be responsible for structural design related issues (must be an Illinois Licensed Structural Engineer).
- QC/QA reviewer of all milestone submittals, who must be an Illinois Licensed Professional Engineer for roadway elements, or an Illinois Licensed Structural Engineer for structural elements.

Schedule: This project is scheduled to start in 2025. The substantial completion date for this project will be approximately 36 months after authorization to proceed inclusive of completion of Phase III support services during construction. Phase II design services are anticipated to be completed approximately 18 months after authorization to proceed. Final schedule will be determined at the time of negotiation.

The Consultant must have MicroStation capabilities. All final documents shall be submitted in hard copy and electronic format, including a 3-D Model, and follow the CADD Standards Manual. This project will be managed through the Tollway's web-based project management system. The Consultant will be required to participate in these procedures and will receive training on the system. The Tollway will furnish the Consultant with guidelines for the Consultant's Quality Program (CQP). The CQP is due fourteen (14) days after Notice to Proceed. The Consultant who is selected for this project will be notified and scheduled to attend a scope briefing with the Illinois Tollway.

1.5.4 Item 4 I-25-2003, Tri-State Tollway (I-294), Bridge Reconstruction at Union Pacific Railroad (UPRR), Phase II Engineering Services

This project has a 21% D/M/WBE participation goal and 3% VOS/SDVOSBE participation goal.

Phase II engineering services are required for the preparation of contract drawings, specifications and project related permits for the reconstruction of the UPRR bridge over the Tri-State Tollway (I-294) at Mile Post 1.5 in Cook County, Illinois.

The work generally encompasses railroad bridge reconstruction design and shall include, but not be limited to, the following items:

- Structural design
- Bridge Type Studies
- Type, Size and Location (TS&L) plan preparation
- Environmental services
- Geotechnical services
- Lighting design
- Drainage design
- Landscaping and soil erosion/sedimentation control design
- Pavement markings, delineators and signage design as necessary
- Barrier warrant analysis
- Maintenance of traffic design
- Utility coordination and protection and/or relocation of utilities
- Plats of acquisition and legal description preparation
- Railroad coordination and preparation of documents for Railroad review and approval
- Phase III support during construction
- All other appurtenant and miscellaneous items

Construction Estimate: Category B

The prime firm must be prequalified by IDOT in the following categories:

Structures (Railroad)
Highways (Freeways)
Transportation Studies (Railway Engineering)

The Tollway will allow a prime consultant to meet the prequalification for Transportation Studies (Railway Engineering) through a subconsultant.

Key personnel listed on Exhibit A for this project must include:

- Project Manager (must be an Illinois Licensed Professional Engineer or Structural Engineer).
- Project Engineer, that individual in charge who is directly involved in the development of the contract documents (must be an Illinois Licensed Professional Engineer).
- Roadway designer, who will be responsible for roadway design related issues (must be an Illinois Licensed Professional Engineer).
- Structural designer, who will be responsible for structural design related issues (must be an Illinois Licensed Structural Engineer).
- Railroad designer, who will be responsible for railroad design related issues (must be an Illinois Licensed Professional Engineer).
- QC/QA reviewer of all milestone submittals, who must be an Illinois Licensed Professional Engineer for roadway elements, or an Illinois Licensed Structural Engineer for structural elements.

Schedule: This project is scheduled to start in 2025. The substantial completion date for this project will be approximately 60 months after authorization to proceed inclusive of completion of Phase III support services during construction. Phase II design services are anticipated to be completed approximately 30 months after authorization to proceed. Final schedule will be determined at the time of negotiation.

The Consultant must have MicroStation capabilities. All final documents shall be submitted in hard copy and electronic format, including a 3-D Model, and follow the CADD Standards Manual. This project will be managed through the Tollway's web-based project management system. The Consultant will be required to participate in these procedures and will receive training on the system. The Tollway will furnish the Consultant with guidelines for the Consultant's Quality Program (CQP). The CQP is due fourteen (14) days after Notice to Proceed. The Consultant who is selected for this project will be notified and scheduled to attend a scope briefing with the Illinois Tollway.

1.5.5 Item 5 I-25-2004, Tri-State Tollway (I-294), Bridge Reconstruction at CSX Railroad, Phase II Engineering Services

This project has a 21% D/M/WBE participation goal and 3% VOS/SDVOSBE participation goal.

Phase II engineering services are required for the preparation of contract drawings, specifications and project related permits for the reconstruction of the CSX railroad bridge over the Tri-State Tollway (I-294) at Mile Post 2.1 in Cook County, Illinois.

The work generally encompasses railroad bridge reconstruction design and shall include, but not be limited to, the following items:

- Structural design
- Bridge Type Studies
- Type, Size and Location (TS&L) plan preparation
- Environmental services
- Geotechnical services
- Lighting design
- Drainage design
- Landscaping and soil erosion/sedimentation control design
- Pavement markings, delineators and signage design as necessary
- Barrier warrant analysis
- Maintenance of traffic design
- Utility coordination and protection and/or relocation of utilities
- Plats of acquisition and legal descriptions
- Railroad coordination and preparation documents for Railroad review and approval
- Phase III support during construction
- All other appurtenant and miscellaneous items

Construction Estimate: Category B

The prime firm must be prequalified by IDOT in the following categories:

Structures (Railroad)
Highways (Freeways)
Transportation Studies (Railway Engineering)

The Tollway will allow a prime consultant to meet the prequalification for Transportation Studies (Railway Engineering) through a subconsultant.

Key personnel listed on Exhibit A for this project must include:

- Project Manager (must be an Illinois Licensed Professional Engineer or Structural Engineer).
- Project Engineer, that individual in charge who is directly involved in the development of the contract documents (must be an Illinois Licensed Professional Engineer).
- Roadway designer, who will be responsible for roadway design related issues (must be an Illinois Licensed Professional Engineer).
- Structural designer, who will be responsible for structural design related issues (must be an Illinois Licensed Structural Engineer).
- Railroad designer, who will be responsible for railroad design related issues (must be an Illinois Licensed Professional Engineer).
- QC/QA reviewer of all milestone submittals, who must be an Illinois Licensed Professional Engineer for roadway elements, or an Illinois Licensed Structural Engineer for structural elements.

Schedule: This project is scheduled to start in 2025. The substantial completion date for this project will be approximately 60 months after authorization to proceed inclusive of completion of Phase III support services during construction. Phase II design services are anticipated to be completed approximately 30 months after authorization to proceed. Final schedule will be determined at the time of negotiation.

The Consultant must have MicroStation capabilities. All final documents shall be submitted in hard copy and electronic format, including a 3-D Model, and follow the CADD Standards Manual. This project will be managed through the Tollway's web-based project management system. The Consultant will be required to participate in these procedures and will receive training on the system. The Tollway will furnish the Consultant with guidelines for the Consultant's Quality Program (CQP). The CQP is due fourteen (14) days after Notice to Proceed. The Consultant who is selected for this project will be notified and scheduled to attend a scope briefing with the Illinois Tollway.

1.5.6 Item 6 I-25-2005, Reagan Memorial Tollway (I-88), Bridge Reconstruction at Canadian National Railway, Phase II Engineering Services

This project has a 21% D/M/WBE participation goal and 3% VOS/SDVOSBE participation goal.

Phase II engineering services are required for the preparation of contract drawings, specifications and project related permits for the reconstruction of the Canadian National Railway bridge over the Reagan Memorial Tollway (I-88) at Mile Post 121.9 in DuPage County, Illinois.

The work generally encompasses railroad bridge reconstruction design and shall include, but not be limited to, the following items:

- Structural design
- Bridge Type Studies
- Type, Size and Location (TS&L) plan preparation
- Environmental services
- Geotechnical services
- Lighting design
- Drainage design
- Landscaping and soil erosion/sedimentation control design
- Pavement markings, delineators and signage design as necessary
- Barrier warrant analysis
- Maintenance of traffic design
- Utility coordination and protection and/or relocation of utilities
- Plats of acquisition and legal description preparation
- Coordination and preparation of documents for Railroad review and approval
- Phase III support during construction
- All other appurtenant and miscellaneous items

Construction Estimate: Category B

The prime firm must be prequalified by IDOT in the following categories:

Structures (Railroad)
Highways (Freeways)
Transportation Studies (Railway Engineering)

The Tollway will allow a prime consultant to meet the prequalification for Transportation Studies (Railway Engineering) through a subconsultant.

Key personnel listed on Exhibit A for this project must include:

- Project Manager (must be an Illinois Licensed Professional or Structural Engineer).
- Project Engineer, that individual in charge who is directly involved in the development of the contract documents (must be an Illinois Licensed Professional Engineer).
- Roadway designer, who will be responsible for roadway design related issues (must be an Illinois Licensed Professional Engineer).
- Structural designer, who will be responsible for structural design related issues (must be an Illinois Licensed Structural Engineer).
- Railroad designer, who will be responsible for railroad design related issues (must be an Illinois Licensed Professional Engineer).
- QC/QA reviewer of all milestone submittals, who must be an Illinois Licensed Professional Engineer for roadway elements, or an Illinois Licensed Structural Engineer for structural elements.

Schedule: This project is scheduled to start in 2025. The substantial completion date for this project will be approximately 60 months after authorization to proceed inclusive of completion of Phase III support services during construction. Phase II design services are anticipated to be completed approximately 30 months after authorization to proceed. Final schedule will be determined at the time of negotiation.

The Consultant must have MicroStation capabilities. All final documents shall be submitted in hard copy and electronic format, including a 3-D Model, and follow the CADD Standards Manual. This project will be managed through the Tollway's web-based project management system. The Consultant will be required to participate in these procedures and will receive training on the system. The Tollway will furnish the Consultant with guidelines for the Consultant's Quality Program (CQP). The CQP is due fourteen (14) days after Notice to Proceed. The Consultant who is selected for this project will be notified and scheduled to attend a scope briefing with the Illinois Tollway.

1.5.7 Item 7 I-25-2006, Tri-State Tollway (I-94/I-294), Plaza Improvements, Phase II Engineering Services

This project has a 29% D/M/WBE participation goal and 3% VOSB participation goal.

Phase II engineering services are required for the preparation of engineering studies, contract drawings, and specifications and project related permits for related to plaza improvements throughout the Tollway system along the Tri-State Tollway (I-94/I-294) in Lake and Cook Counties, Illinois.

The Tollway has identified several ramp and mainline plaza locations throughout the Tollway system which may be candidates for repair, potential relocation, and replacement. Potential locations to be assessed may include, but are not limited to:

1. Plaza 20 at Illinois Route 137 (Buckley Road) along I-94
2. Plaza 21 (Waukegan) along I-94
3. Plaza 22 at Illinois Route 60 (Town Line Road) along I-94
4. Plaza 23 at Illinois Route 22 (Half Day Road) along I-94
5. Plaza 27 at Willow Road along I-294

This list will be reviewed and confirmed through scope briefing and may be extended to include Tollway mainline plazas or other ramp plazas.

The work generally encompasses roadway and ramp design and shall also include, but not be limited to the following:

- Toll plaza design
- Drainage design
- Lighting and electrical design
- Environmental services
- Geotechnical services
- Erosion control
- Signing and pavement marking design
- Barrier warrant analysis
- Maintenance of traffic design
- Utility coordination and protection and/or relocation of utilities
- Phase III support during construction
- All other appurtenant and miscellaneous items

Construction Estimate: Category B

The prime firm must be prequalified by IDOT in the following categories:

Highways (Freeways)
Special Services (Electrical Engineering)
Special Services (Surveying)

The Tollway will allow a Prime Consultant to meet the prequalification for Special Services (Electrical Engineering) and Special Services (Surveying) through a subconsultant(s).

Key personnel listed on Exhibit A for this project must include:

- Project Manager (must be an Illinois Licensed Professional Engineer).
- Project Engineer, that individual in charge who is directly involved in the development of the contract documents (must be an Illinois Licensed Professional Engineer).
- Roadway designer, who will be responsible for roadway design related issues (must be an Illinois Licensed Professional Engineer).
- Electrical designer, who will be responsible for electrical design related issues (must be an Illinois Licensed Professional Engineer).
- QC/QA reviewer of all milestone submittals, who must be an Illinois Licensed Professional Engineer.

Schedule: This project is scheduled to start in 2025. The substantial completion date for this project will be approximately 36 months after authorization to proceed inclusive of completion of Phase III support services during construction. Phase II design services are anticipated to be completed approximately 18 months after authorization to proceed. Final schedule will be determined at the time of negotiation.

The Consultant must have MicroStation capabilities. All final documents shall be submitted in hard copy and electronic format, including a 3-D Model, and follow the CADD Standards Manual. This project will be managed through the Tollway's web-based project management system. The Consultant will be required to participate in these procedures and will receive training on the system. The Tollway will furnish the Consultant with guidelines for the Consultant's Quality Program (CQP). The CQP is due fourteen (14) days after Notice to Proceed. The Consultant who is selected for this project will be notified and scheduled to attend a scope briefing with the Illinois Tollway.

1.5.8 Item 8 I-25-2007, Jane Addams Memorial Tollway (I-90) and Reagan Memorial Tollway (I-88), Plaza Improvements, Phase II Engineering Services

This project has a 29% D/M/WBE participation goal and 3% VOSB participation goal.

Phase II engineering services are required for the preparation of contract drawings, specifications and project related permits for plaza improvements along the Jane Addams Memorial Tollway (I-90) and Reagan Memorial Tollway (I-88) in Winnebago, Boone, DeKalb and Kane Counties, Illinois.

The Tollway has identified several ramp plaza locations throughout the Tollway system which may be candidates for repair, potential relocation, and replacement. Potential locations to be assessed may include, but are not limited to:

1. Plaza 3 at Genoa Road along I-90
2. Plaza 4 at Illinois Route 173 (West Lane Road) along I-90
3. Plaza 59 at Farnsworth Avenue along I-88 (eastbound entrance ramp)
4. Plaza 65 at Peace Road along I-88
5. Plaza 67 at Annie Glidden Road along I-88

This list will be reviewed and confirmed through scope briefing and may be extended to include Tollway mainline plazas or other ramp plazas.

The work generally encompasses roadway and ramp design and shall also include, but not be limited to the following:

- Toll plaza design
- Drainage design
- Lighting and electrical design
- Environmental services
- Geotechnical services
- Erosion control
- Signing and pavement marking design
- Barrier warrant analysis
- Maintenance of traffic
- Utility coordination and protection and/or relocation of utilities
- Phase III support during construction
- All other appurtenant and miscellaneous items

Construction Estimate: Category A

The prime firm must be prequalified by IDOT in the following categories:

Highways (Freeways)
Special Services (Electrical Engineering)
Special Services (Surveying)

The Tollway will allow a Prime Consultant to meet the prequalification for Special Services (Electrical Engineering) and Special Services (Surveying) through a subconsultant(s).

Key personnel listed on Exhibit A for this project must include:

- Project Manager (must be an Illinois Licensed Professional Engineer).
- Project Engineer, that individual in charge who is directly involved in the development of the contract documents (must be an Illinois Licensed Professional Engineer).
- Roadway designer, who will be responsible for roadway design related issues (must be an Illinois Licensed Professional Engineer).
- Electrical designer, who will be responsible for electrical design related issues (must be an Illinois Licensed Professional Engineer).
- QC/QA reviewer of all milestone submittals, who must be an Illinois Licensed Professional Engineer.

Schedule: This project is scheduled to start in 2025. The substantial completion date for this project will be approximately 36 months after authorization to proceed inclusive of completion of Phase III support services during construction. Phase II design services are anticipated to be completed approximately 18 months after authorization to proceed. Final schedule will be determined at the time of negotiation.

The Consultant must have MicroStation capabilities. All final documents shall be submitted in hard copy and electronic format, including a 3-D Model, and follow the CADD Standards Manual. This project will be managed through the Tollway's web-based project management system. The Consultant will be required to participate in these procedures and will receive training on the system. The Tollway will furnish the Consultant with guidelines for the Consultant's Quality Program (CQP). The CQP is due fourteen (14) days after Notice to Proceed. The Consultant who is selected for this project will be notified and scheduled to attend a scope briefing with the Illinois Tollway.

1.5.9 Item 9 I-25-2008, Reagan Memorial Tollway (I-88) and Veterans Memorial Tollway (I-355), Plaza Improvements, Phase II Engineering Services

This project has a 29% D/M/WBE participation goal and 3% VOSB participation goal.

Phase II engineering services are required for the preparation of contract drawings, specifications and project related permits for plaza improvements along the Reagan Memorial Tollway (I-88) and Veterans Memorial Tollway (I-355) in DuPage County, Illinois.

The Tollway has identified several ramp plaza locations throughout the Tollway system which may be candidates for repair, potential relocation, and replacement. Potential locations to be assessed may include, but are not limited to:

1. Plaza 53 at Spring Road (22nd Street) along I-88
2. Plaza 54 at Illinois Route 83 (Kingery Highway) along I-88
3. Plaza 55 at Midwest Road along I-88
4. Plaza 77 at Illinois Route 38 (Roosevelt Road) along I-355
5. Plaza 79 at Illinois Route 56 (Butterfield Road) along I-355
6. Plaza 81 at Ogden Avenue (U.S. 34) along I-355 and I-88

This list will be reviewed and confirmed through scope briefing and may be extended to include Tollway mainline plazas or other ramp plazas.

The work generally encompasses roadway and ramp design and shall also include, but not be limited to the following:

- Toll plaza design
- Drainage design
- Lighting and electrical design
- Environmental services
- Geotechnical services
- Erosion control
- Signing and pavement marking design
- Barrier warrant analysis
- Maintenance of traffic
- Utility coordination and protection and/or relocation of utilities
- Phase III support during construction
- All other appurtenant and miscellaneous items

Construction Estimate: Category B

The prime firm must be prequalified by IDOT in the following categories:

Highways (Freeways)
Special Services (Electrical Engineering)
Special Services (Surveying)

The Tollway will allow a Prime Consultant to meet the prequalification for Special Services (Electrical Engineering) and Special Services (Surveying) through a subconsultant(s).

Key personnel listed on Exhibit A for this project must include:

- Project Manager (must be an Illinois Licensed Professional Engineer).
- Project Engineer, that individual in charge who is directly involved in the development of the contract documents (must be an Illinois Licensed Professional Engineer).
- Roadway designer, who will be responsible for roadway design related issues (must be an Illinois Licensed Professional Engineer).
- Electrical designer, who will be responsible for electrical design related issues (must be an Illinois Licensed Professional Engineer).
- QC/QA reviewer of all milestone submittals, who must be an Illinois Licensed Professional Engineer.

Schedule: This project is scheduled to start in 2025. The substantial completion date for this project will be approximately 36 months after authorization to proceed inclusive of completion of Phase III support services during construction. Phase II design services are anticipated to be completed approximately 18 months after authorization to proceed. Final schedule will be determined at the time of negotiation.

The Consultant must have MicroStation capabilities. All final documents shall be submitted in hard copy and electronic format, including a 3-D Model, and follow the CADD Standards Manual. This project will be managed through the Tollway's web-based project management system. The Consultant will be required to participate in these procedures and will receive training on the system. The Tollway will furnish the Consultant with guidelines for the Consultant's Quality Program (CQP). The CQP is due fourteen (14) days after Notice to Proceed. The Consultant who is selected for this project will be notified and scheduled to attend a scope briefing with the Illinois Tollway.

1.5.10 Item 10 I-25-2009, Veterans Memorial Tollway (I-355), Plaza Improvements, Phase II Engineering Services

This project has a 29% D/M/WBE participation goal and 3% VOSB participation goal.

Phase II engineering services are required for the preparation of contract drawings, specifications and project related permits for plaza improvements along the Veterans Memorial Tollway (I-355) in DuPage Cook and Will Counties, Illinois.

The Tollway has identified several ramp plaza locations throughout the Tollway system which may be candidates for repair, potential relocation, and replacement. Potential locations to be assessed may include, but are not limited to:

1. Plaza 83 at Maple Avenue along I-355
2. Plaza 85 at 63rd Street along I-355
3. Plaza 87 at 75th Street along I-355
4. Plaza 90 at Boughton Road along I-355
5. Plaza 93 at 127th Street along I-355
6. Plaza 95 at Archer Avenue (143rd Street) along I-355
7. Plaza 97 at Illinois Route 7 (159th Street) along I-355
8. Plaza 101 at U.S. 6 (Southwest Highway) along I-355

This list will be reviewed and confirmed through scope briefing and may be extended to include Tollway mainline plazas or other ramp plazas.

The work generally encompasses roadway and ramp design and shall also include, but not be limited to the following:

- Toll plaza design
- Drainage design
- Lighting and electrical design
- Environmental services
- Geotechnical services
- Erosion control
- Signing and pavement marking design
- Barrier warrant analysis
- Maintenance of traffic
- Utility coordination and protection and/or relocation of utilities
- Phase III support during construction
- All other appurtenant and miscellaneous items

Construction Estimate: Category B

The prime firm must be prequalified by IDOT in the following categories:

Highways (Freeways)
Special Services (Electrical Engineering)
Special Services (Surveying)

The Tollway will allow a Prime Consultant to meet the prequalification for Special Services (Electrical Engineering) and Special Services (Surveying) through a subconsultant(s).

Key personnel listed on Exhibit A for this project must include:

- Project Manager (must be an Illinois Licensed Professional Engineer).
- Project Engineer, that individual in charge who is directly involved in the development of the contract documents (must be an Illinois Licensed Professional Engineer).
- Roadway designer, who will be responsible for roadway design related issues (must be an Illinois Licensed Professional Engineer).
- Electrical designer, who will be responsible for electrical design related issues (must be an Illinois Licensed Professional Engineer).
- QC/QA reviewer of all milestone submittals, who must be an Illinois Licensed Professional Engineer.

Schedule: This project is scheduled to start in 2025. The substantial completion date for this project will be approximately 36 months after authorization to proceed inclusive of completion of Phase III support services during construction. Phase II design services are anticipated to be completed approximately 18 months after authorization to proceed. Final schedule will be determined at the time of negotiation.

The Consultant must have MicroStation capabilities. All final documents shall be submitted in hard copy and electronic format, including a 3-D Model, and follow the CADD Standards Manual. This project will be managed through the Tollway's web-based project management system. The Consultant will be required to participate in these procedures and will receive training on the system. The Tollway will furnish the Consultant with guidelines for the Consultant's Quality Program (CQP). The CQP is due fourteen (14) days after Notice to Proceed. The Consultant who is selected for this project will be notified and scheduled to attend a scope briefing with the Illinois Tollway.

1.5.11 Item 11 RR-25-2010, Jane Addams Memorial Tollway (I-90), Roadway and Bridge Rehabilitation from Rockton Road (Mile Post 2.6) to Kishwaukee River (Mile Post 18.3), Phase II Engineering Services

This project has a 31% D/M/WBE participation goal and 3% VOSB participation goal.

Phase II engineering services are required for the preparation of contract drawings, specifications and project related permits for the proposed roadway and bridge rehabilitation on the Jane Addams Memorial Tollway (I-90) between Rockton Road (Mile Post 2.6) and the Kishwaukee River (Mile Post 18.3) in Winnebago County, Illinois.

The work generally encompasses roadway and bridge rehabilitation and shall include, but not be limited to, the following items:

- Roadway design
- Structural design
- Maintenance of traffic design including that associated with local roadways
- Barrier warrant analysis
- Drainage design for new system installation or for modification of the existing drainage system
- Landscaping and soil erosion/sedimentation control design
- Pavement markings, delineators and signage design as necessary
- Utility coordination and design for protection and / or relocation of utilities
- Phase III support during construction
- All other appurtenant and miscellaneous design.

The following structures are anticipated to be included in this project:

- McCurry Road over I-90
- Elevator Road over I-90
- I-90 over Burr Oak Road (2 structures)
- I-90 over Stone Bridge Trail (2 structures)
- Swanson Road over I-90
- I-90 over IL 173 (2 structures)
- I-90 over Willow Creek culvert
- East Riverside Boulevard over I-90
- Business US 20 Ramp A over I-90
- I-90 over Business US 20 (State Street) (2 structures)
- Newburg Road over I-90
- I-39 Ramp G over I-90
- US 20 Ramp F over I-90
- Mill Road over I-90

Construction Estimate: Category C

The Prime Consultant must be prequalified by IDOT in the following categories:

Highways (Freeways)
Structures (Highway Bridges: Typical)

The Tollway will allow a Prime Consultant to meet the prequalification for Structures (Highway Bridges: Typical) through a subconsultant(s).

Key personnel listed on Exhibit A for this project must include:

- Project Manager (must be an Illinois Licensed Professional Engineer).
- Project Engineer, that individual in charge who is directly involved in the development of the contract documents (must be an Illinois Licensed Professional Engineer).
- Roadway designer, who will be responsible for roadway design related issues (must be an Illinois Licensed Professional Engineer).
- Structural designer, who will be responsible for structural design related issues (must be an Illinois Licensed Structural Engineer).
- QC/QA reviewer of all milestone submittals, who must be an Illinois Licensed Professional Engineer for roadway elements or an Illinois Licensed Structural Engineer for structural elements.

Schedule: This project is scheduled to start in 2025. The substantial completion date for this project will be approximately 36 months after authorization to proceed inclusive of completion of Phase III support services during construction. Phase II design services are anticipated to be completed approximately 18 months after authorization to proceed. Final schedule will be determined at the time of negotiation.

The Consultant must have MicroStation capabilities. All final documents shall be submitted in hard copy and electronic format per Tollway manuals and standards. This project will be managed through the Tollway's web-based project management system. The Consultant will be required to participate in these procedures and will receive training on the system. The Tollway will furnish the Consultant with guidelines for the Consultant's Quality Program (CQP). The CQP is due fourteen (14) days after Notice to Proceed. The Consultant who is selected for this project will be notified and scheduled to attend a scope briefing with the Illinois Tollway.

1.5.12 Item 12: RR-25-4988, Systemwide, Design Services Upon Request.

This project has a 29% D/M/WBE participation goal and 3% VOSB participation goal.

Phase II engineering services are required for preparation of contract plans, performing engineering studies and providing other technical services as directed by the Illinois Tollway. Tasks may include, but not be limited to, design for the following:

1. Pavement Repairs
2. Bridge Repairs
3. Drainage Improvements
4. Phase III support during construction
5. On call and as-needed work on the Tollway system

The upper limit of compensation will be set at \$3,000,000 to be authorized for use as needed.

The Prime Consultant must be prequalified by IDOT in the following categories:

Highways (Freeways)
Structures (Highway Bridges: Typical)
Special Studies (Location Drainage)

The Tollway will allow a Prime Consultant to meet the prequalification for Structures (Highway Bridges: Typical) and Special Studies (Location Drainage) through a subconsultant(s).

Key personnel listed on Exhibit A for this project must include:

- Project Manager (must be an Illinois Licensed Professional Engineer).
- Project Engineer, that individual in charge who is directly involved in the development of the contract documents (must be an Illinois Licensed Professional Engineer).
- Roadway designer, who will be responsible for roadway design related issues (must be an Illinois Licensed Professional Engineer).
- Structural designer, who will be responsible for structural design related issues (must be an Illinois Licensed Structural Engineer).
- QC/QA reviewer of all milestone submittals, who must be an Illinois Licensed Professional Engineer for roadway elements, or an Illinois Licensed Structural Engineer for structural elements.

Schedule: This project is scheduled to start in 2025. The substantial completion date for this project will be approximately 60 months after authorization to proceed.

The Consultant must have MicroStation capabilities. All final documents shall be submitted in hard copy and electronic format, including a 3-D Model, and follow the CADD Standards Manual per Tollway manuals and standards. This project will be managed through the Tollway's web-based project management system. The Consultant will be required to participate in these procedures and will receive training on the system. The Tollway will furnish the Consultant with guidelines for the Consultant's Quality Program (CQP). The CQP is due fourteen (14) days after Notice to Proceed. The Consultant who is selected for this project will be notified and scheduled to attend a scope briefing with the Illinois Tollway.

1.5.13 Item 13: I-24-4764, Elgin O'Hare Western Access (I-490), Construction Management Services Upon Request

This project has a 33% D/M/WBE participation goal and 3% VOSB participation goal.

Phase III engineering services are required for the construction inspection and supervision at selected locations on the Tollway system. Task orders under the blanket agreement will be negotiated and authorized by the Tollway on an as-needed basis. Tasks may include, but not be limited to, Phase III engineering services for the following projects:

1. Earthwork construction
2. Roadway and bridge construction
3. On call and as-needed work related to the Tollway System

The upper limit of compensation will be set at \$5,000,000.00 to be authorized for use as individual projects are needed.

The Consultant will perform on-site inspection, review layout of contract including design changes, provide geotechnical inspection and testing, prepare records, maintain documentation, submit pay estimates, and change orders and any other duties requiring the services of an engineer to complete this project on a timely basis and in accordance with Tollway specifications. The Consultant may be required to review and make comments on Pre-Final Design Plans submitted to the Tollway for constructability. The Consultant must complete and submit final measurements, calculations, and final contract documents to the Tollway no later than six (6) weeks after completion of Punch List for the project.

The Prime Consultant must be prequalified by IDOT in the following category:

Special Services (Construction Inspection)

Key personnel listed on Exhibit A for this project must include:

- Project Manager (must be an Illinois Licensed Professional Engineer)
- Resident Engineer
- Scheduler
- Materials Coordinator
- The Document Technician (The person actively performing the documentation on the project must possess a current IDOT Construction Document certificate. Include the Documentation Certificate Number for IDOT.)
- Materials QA Technician

For definitions and requirements please see the Illinois Tollway Construction Managers manual found on the Illinois Tollway website at:

<https://www.illinoistollway.com/doing-business/construction-engineering/manuals-processes-guidelines#Manuals>

Schedule: This project is scheduled to start in 2025. The substantial completion date for this project will be approximately 60 months after authorization to proceed.

The Consultant must have MicroStation capabilities. All final documents shall be submitted in hard copy and electronic format, including a 3-D Model, and follow the CADD Standards Manual. This project will be managed through the Tollway's web-based project management system. The Consultant will be required to participate in these procedures and will receive training on the system. The Tollway will furnish the Consultant with guidelines for the Consultant's Quality Program (CQP). The CQP is due fourteen (14) days after Notice to Proceed. The Consultant who is selected for this project will be notified and scheduled to attend a scope briefing with the Illinois Tollway.

1.5.14 Item 14: I-25-2011, Tri-State Tollway (I-294), Construction Management Services Upon Request

This project has a 33% D/M/WBE participation goal and 3% VOSB participation goal.

Phase III engineering services are required for the construction inspection and supervision at selected locations on the Tollway system. Task orders under the blanket agreement will be negotiated and authorized by the Tollway on an as-needed basis. Tasks may include, but not be limited to, Phase III engineering services for the following projects:

1. Landscape planting improvements
2. Noise abatement wall construction
3. On call and as-needed work related to the Tollway System

The upper limit of compensation will be set at \$3,000,000.00 to be authorized for use as individual projects are needed.

The Consultant will perform on-site inspection, review layout of contract including design changes, provide geotechnical inspection and testing, prepare records, maintain documentation, submit pay estimates, and change orders and any other duties requiring the services of an engineer to complete this project on a timely basis and in accordance with Tollway specifications. The Consultant may be required to review and make comments on Pre-Final Design Plans submitted to the Tollway for constructability. The Consultant must complete and submit final measurements, calculations, and final contract documents to the Tollway no later than six (6) weeks after completion of Punch List for the project.

The Prime Consultant must be prequalified by IDOT in the following category:

Special Services (Construction Inspection)

Key personnel listed on Exhibit A for this project must include:

- Project Manager (must be an Illinois Licensed Professional Engineer)
- Resident Engineer
- Scheduler
- Materials Coordinator
- Document Technician (The person actively performing the documentation on the project must possess a current IDOT Construction Document certificate. Include the Documentation Certificate Number for IDOT.)
- Materials QA Technician

For definitions and requirements please see the Illinois Tollway Construction Managers manual found on the Illinois Tollway website at:

<https://www.illinoistollway.com/doing-business/construction-engineering/manuals-processes-guidelines#Manuals>

Schedule: This project is scheduled to start in 2025. The substantial completion date for this project will be approximately 60 months after authorization to proceed.

The Consultant must have MicroStation capabilities. All final documents shall be submitted in hard copy and electronic format per Tollway manuals and standards. This project will be managed through the Tollway's web-based project management system. The Consultant will be required to participate in these procedures and will receive training on the system. The Tollway will furnish the Consultant with guidelines for the Consultant's Quality Program (CQP). The CQP is due fourteen (14) days after Notice to Proceed. The Consultant who is selected for this project will be notified and scheduled to attend a scope briefing with the Illinois Tollway.

1.5.15 Item 15: I-25-2012, Tri-State Tollway (I-294), ITS Improvements, Construction Management Services

This project has a 32% D/M/WBE participation goal and 3% VOSB participation goal.

Phase III engineering services are required for the construction inspection and supervision of Intelligent Transportation System (ITS) improvements along the Tri-State Tollway from 95th Street to Balmoral Avenue, Mile Post 17.6 to Mile Post 39.8 in Cook County, Illinois.

The proposed improvements include installation of ITS equipment at the IPDC buildings, ITS equipment cabinets, Closed Circuit Television Cameras (CCTV), Vehicle Detection Systems (VDS), ramp detection, ITS poles, communication and power equipment, removal of existing equipment, fiber optic cable and switches, Active Traffic Management (ATM) gantry structures and dynamic message signs, maintenance of traffic, and all other appurtenances and miscellaneous construction as required.

The Consultant will perform on-site inspection, review layout of contract including design changes, provide geotechnical inspection and testing, prepare records, maintain documentation, submit pay estimates and change orders and any other duties requiring the services of an engineer to complete this project on a timely basis and in accordance with Tollway specifications. The Consultant may be required to review and make comments on Pre-Final Design Plans submitted to the Tollway for constructability. The Consultant must complete and submit final measurements, calculations and final contract documents to the Tollway no later than six (6) weeks after completion of Punch List for the project.

Construction Estimate: Category B

The Prime Consultant must be prequalified by IDOT in the following category:

Special Services (Construction Inspection)
Special Services (Electrical Engineering)

The Tollway will allow a Prime Consultant to meet the prequalification for Special Services (Electrical Engineering) through a subconsultant.

Key personnel listed on Exhibit A for this project must include:

- Project Manager (must be an Illinois Licensed Professional Engineer)
- Resident Engineer
- Scheduler
- Materials Coordinator
- The Document Technician. (The person actively performing the documentation on the project must possess a current IDOT Construction Document certificate. Include the Documentation Certificate Number for IDOT.)
- Materials QA Technician

For definitions and requirements please see the Illinois Tollway Construction Managers manual found on the Illinois Tollway website at:

<https://www.illinoistollway.com/doing-business/construction-engineering/manuals-processes-guidelines#Manuals>

Schedule: This project is scheduled to start in 2025. The substantial completion date for this project will be approximately 32 months after authorization to proceed.

The Consultant must have MicroStation capabilities. All final documents shall be submitted in hard copy and electronic format, including a 3-D Model, and follow the CADD Standards Manual. This project will be managed through the Tollway's web-based project management system. The Consultant will be required to participate in these procedures and will receive training on the system. The Tollway will furnish the Consultant with guidelines for the Consultant's Quality Program (CQP). The CQP is due fourteen (14) days after Notice to Proceed. The Consultant who is selected for this project will be notified and scheduled to attend a scope briefing with the Illinois Tollway.

1.5.16 Item 16: RR-25-9302, Systemwide, ITS Construction Management Services Upon Request

This project has a 31% D/M/WBE participation goal and 3% VOSB participation goal.

Phase III engineering services are required for the construction inspection and supervision at selected locations on the Tollway system. Task orders under the blanket agreement will be negotiated and authorized by the Tollway on an as-needed basis. Tasks may include, but not be limited to, Phase III engineering services for the following projects:

1. CCTV camera installation
2. Weigh-in-Motion (WIM) repairs and installation
3. Dynamic Message Sign (DMS) installation
4. On call and as-needed work related to the Tollway System

The upper limit of compensation will be set at \$3,000,000.00 to be authorized for use as individual projects are needed.

The Consultant will perform on-site inspection, review layout of contract including design changes, provide geotechnical inspection and testing, prepare records, maintain documentation, submit pay estimates, and change orders and any other duties requiring the services of an engineer to complete this project on a timely basis and in accordance with Tollway specifications. The Consultant may be required to review and make comments on Pre-Final Design Plans submitted to the Tollway for constructability. The Consultant must complete and submit final measurements, calculations, and final contract documents to the Tollway no later than six (6) weeks after completion of Punch List for the project.

The Prime Consultant must be prequalified by IDOT in the following category:

Special Services (Construction Inspection)

Special Services (Electrical Engineering)

The Tollway will allow a Prime Consultant to meet the prequalification category requirement for Special Services (Electrical Engineering) through a subconsultant.

Key personnel listed on Exhibit A for this project must include:

- Project Manager (must be an Illinois Licensed Professional Engineer)
- Resident Engineer
- Materials Coordinator
- Document Technician (The person actively performing the documentation on the project must possess a current IDOT Construction Document certificate. Include the Documentation Certificate Number for IDOT.)
- Materials QA Technician

For definitions and requirements please see the Illinois Tollway Construction Managers manual found on the Illinois Tollway website at:

<https://www.illinoistollway.com/doing-business/construction-engineering/manuals-processes-guidelines#Manuals>

Schedule: This project is scheduled to start in 2025. The substantial completion date for this project will be approximately 60 months after authorization to proceed.

The Consultant must have MicroStation capabilities. All final documents shall be submitted in hard copy and electronic format per Tollway manuals and standards. This project will be managed through the Tollway's web-based project management system. The Consultant will be required to participate in these procedures and will receive training on the system. The Tollway will furnish the Consultant with guidelines for the Consultant's Quality Program (CQP). The CQP is due fourteen (14) days after Notice to Proceed. The Consultant who is selected for this project will be notified and scheduled to attend a scope briefing with the Illinois Tollway.

PART II: CONTRACT CLAUSES AND REQUIREMENTS

2.1 CONSULTANT /SUBCONSULTANT CONFLICTS OF INTEREST WITHIN TOLLWAY PROJECTS

Professional engineering services performed under contracts with the Illinois Tollway shall be performed in accordance with the highest standards of professional behavior and highest principles of ethical conduct. Such services must be provided with honesty, impartiality, fairness and equity and must be dedicated to the protection of public health, safety and welfare.

Prime Consultants submitting a Statement of Interest (SOI) shall disclose any known or potential conflicts of interest the Prime Consultants may have.

The selected Prime Consultant shall be required to submit a Consultant Quality Program (CQP) to the Illinois Tollway, which shall be subject to approval by the Illinois Tollway. As part of the CQP, Prime Consultants shall identify any known or potential conflicts of interest, including any known or potential conflicts of interest identified by any of their Subconsultants. The CQP also shall outline the plan for monitoring known conflicts and identifying potential conflicts through the duration of the contract, as well as describe, in detail, procedures relative to ethical screens and other procedures for mitigating conflicts. If additional conflicts of interest or potential conflicts of interest are identified during the administration of the contract, the Prime Consultant will be required to submit an updated CQP.

Periodically, the Illinois Tollway solicits Professional Services for foundational contracts, which include the Program Management Office (PMO), Consulting Engineer (CE), and Traffic Engineer (TE) contracts. The overarching engineering services provided pursuant to foundational contracts involve all or the majority of all other Illinois Tollway Professional Services contracts, and the foregoing provisions of this Section 2.1 are fully applicable to the PMO, CE and TE contracts.

Foundational contracts prohibit the PMO, CE and TE from performing new services for the Illinois Tollway during the pendency of the respective PMO, CE, or TE contract (including extensions). "New services" as used herein includes, but is not limited to, work or services awarded to a person or entity not affiliated with the PMO, CE, or TE that, subsequent to the award of the PMO, CE, or TE contract, is acquired, becomes controlled by or otherwise becomes affiliated with the PMO, CE, or TE. The PMO, CE, and TE are required to notify the Illinois Tollway, in advance, of any such acquisition, assumption of control or affiliation.

Notwithstanding the provisions of the CQP or any other provisions of this Section 2.1, the Illinois Tollway reserves the right to assess and require appropriate corrective action, as determined by the Illinois Tollway, relative to any conflict or potential conflict issues involving a professional firm, professional individual, PMO, CE, or TE. Relative to conflicts and potential conflicts, Prime Consultants must be responsive to the Illinois Tollway so that appropriate steps can be taken to mitigate any such circumstances.

Consistent with the foregoing, professional firms should conduct their operations using common sense and professional judgment. Professional firms should not place their firms in inappropriate situations or create any unfair advantage for their firms.

This notice is not intended to address any potential conflicts of interest ruled upon by the Chief Procurement Officer and/or the Procurement Policy Board under the Illinois Procurement Code (30 ILCS 500/1, et seq.). Violations of this Section may result in termination of contracts for cause or the Illinois Tollway declining to award work, projects or contracts.

2.2 INSPECTOR GENERAL

The Vendor hereby acknowledges that pursuant to Section 8.5 of the Toll Highway Act (605 ILCS 10/8.5) the Inspector General of the Illinois State Toll Highway Authority ("OIG") has the authority to conduct investigations into certain matters including but not limited to allegations of fraud, waste and abuse, and to conduct reviews. The Vendor agrees that it will fully cooperate in any OIG investigation or review and shall not bill the Illinois Tollway for such time. Cooperation includes, but is not limited to, providing access to all information and documentation related to the goods/services described in any Agreement entered into in connection with this PSB, and disclosing and making available all personnel involved or connected with these goods/services or having knowledge of these goods/services. All Prime Consultants must inform Subconsultants of this provision and their duty to similarly comply and cooperate with any OIG investigation or review.

2.3 FINANCIAL INFORMATION

2.3.1 DIRECT LABOR MULTIPLIER

The Direct Labor Multiplier to be used on projects advertised in the PSB is as follows:

Phase I and II (Studies, Design, and Survey)	2.8
Phase III (Construction Management)	2.8
Project Staff at Illinois Tollway Facilities	2.5

- The 2.5 multiplier applies to contracts with personnel permanently assigned to an Illinois Tollway facility, such as the Central Administration Building (CA). The 2.5 multiplier does not pertain to personnel assigned to construction field offices for Phase III (Construction Management).

The Direct Labor Multiplier for specialty engineering services, such as Aerial Mapping and LiDAR, will be based upon the firm's current overhead determined during initial contract negotiations between Tollway and Consultant.

2.3.2 OTHER CONTRACTING METHODS

The Illinois Tollway, in its sole discretion, may consider, when it is in the best interest of the Illinois Tollway, other payment methodologies in lieu of the Direct Labor Multiplier. Other considerations include "flat rate" or "lump sum" methodology that would be further defined at the time of negotiations between Tollway and Consultant. Other payment methodologies could negate or alter section 2.3.1 Direct Labor Multiplier.

2.3.3 ESTIMATED CONSTRUCTION COST OF PROJECTS

The estimated construction cost of each project is presented in the following categories or may be specific to a project detail. This is to assist the Vendor in determining the relative size of the project. The construction cost category will be included in each Item. The categories are:

CATEGORY	ESTIMATED CONSTRUCTION COSTS
A	\$0M - \$ 25M
B	\$ 25M - \$ 50M
C	\$ 50M - \$ 75M
D	\$ 75M - \$ 100M
E	\$ 100M - \$150M
F	\$150M-\$200M
G	>\$200M

2.3.4 ALLOWABLE DIRECT COSTS

The Allowable Direct Cost and Allowable Direct Cost –Construction Inspection lists are available on the Illinois Tollway's website at:

<https://www.illinoistollway.com/doing-business/construction-engineering/forms>

The Illinois Tollway will allow the Vendor to negotiate their Direct costs and bill as a lump sum on the contract.

2.4 ILLINOIS TOLLWAY'S CONTRACT PAYMENT POLICY

The Illinois Tollway will not issue payments under contracts for costs incurred during the preceding calendar year if any invoice for that work is received after February 28th of the subsequent fiscal year. This policy enables the Illinois Tollway to close its financial books both on time and accurately. To meet the requirements of Generally Accepted Accounting Principles and those of the Illinois Auditor General and external auditors, the Illinois Tollway must account for all of its expenditures for a given calendar year before the end of the subsequent February. This policy includes payment of any "re-bill" issues that may arise. The Illinois Tollway is unable to make any payments for work in a given calendar year if it has not been properly invoiced to the Illinois Tollway by February 28th of the following year.

2.5 DISADVANTAGED BUSINESS ENTERPRISE (DBE) PARTICIPATION

The Illinois Tollway hereby notifies all respondents that it will affirmatively ensure that in any contract entered into pursuant to this solicitation, disadvantaged, minority, women-owned business and Small Business Administration (SBA) 8(a) enterprises are encouraged to submit a SOI response to this invitation and/or to participate in the advertised Disadvantaged Business Enterprise (DBE) goal of the work to be performed under the contract as a Subconsultant.

Any agreement between a Prime Consultant and a DBE or other Subconsultant in which the Prime Consultant requires that the Subconsultant not provide professional services proposals to other vendors is prohibited.

To qualify as an eligible DBE, the firm must be currently certified by one of the following agencies currently participating in either (A) the Illinois Unified Certification Program (IL UCP); (B) the City of Chicago, Illinois; or (C) the County of Cook, Illinois, as a Minority or Women-Owned Business ("M/WBE") pursuant to their M/WBE programs; or (D) it must be currently participating in the Small Business Administration SBA 8(a) Program. A DBE is considered to have current certification if the firm is listed in the directory database of the pertinent certifying agency:

- IL UCP - Illinois Department of Transportation (IDOT)
- IL UCP - Chicago Transit Authority (CTA)
- IL UCP - PACE
- IL UCP - METRA
- IL UCP - City of Chicago
- City of Chicago – M/WBE
- Cook County, Illinois – M/WBE
- Small Business Administration SBA 8(a)

Each DBE firm utilized must be listed in a certifying agency's database at the time of the expiration of the extended documentation period, if utilized, as described below to be considered acceptable. Please provide proof of certification (example: letter) with your SOITEAM submittal (Certifications are to be included as attachments to Exhibit F – VOSB Letter of Intent and Exhibit H DBE Letter of Intent). Certification letters must be current, and DBE and VOSB vendor's scope(s) of work stated in the SOI and Letter of Intent (LOI) must match the area(s) of specialty specified in the DBE's or VOSB's certification letter. Failure to provide the required DBE/VOSB participation/utilization information in the SOITEAM may result in the SOI being deemed non-responsive.

You can view/print and download the most current listing of DBE firms at:

- IDOT's web site: <https://webapps1.dot.illinois.gov/UCP/ExternalSearch>
- City of Chicago's web site: <https://chicago.mwdbe.com/>
- County of Cook, Illinois' web site: <https://cookcounty.diversitycompliance.com/>
- Small Business Administration's SBA 8(a) web site: <https://dsbs.sba.gov/>

If a Vendor cannot obtain sufficient DBE commitments to meet the contract goal, the Vendor must document its good faith efforts to meet the goal, including any DBE participation secured, and request a partial or full waiver of the contract goal. Demonstrating good faith efforts means that the Vendor must show that all necessary and reasonable steps were taken to achieve the contract goal, meaning those steps that could be reasonably expected to obtain sufficient DBE participation. Mere pro forma efforts are not good faith efforts, and the documentation must be supported by backup evidencing contact attempts and results made by the Vendor to DBE firms. Vendors should not submit pricing information received from DBE firms with the good faith efforts documentation.

Examples of good faith efforts and the contact log are available in the List of Documents, Exhibit F, Section 7.10 of the State of Illinois Veteran Small Business Participation and Utilization Plan and in Exhibit H, Section 6.5 of the Tollway DBE Participation, Utilization Plan and Letter of Intent for Professional Services.

Extended Documentation Period for Vendors with a Technical Issue as determined by the Illinois Tollway related to the DBE and VOSB Commitment Made on a SOI:

All required DBE/VOSB documentation must be completed to the fullest extent possible and submitted with the SOI, including the signed DBE/VOSB Letters of Intent (LOI) and SOITEAM. The SOITEAM data will take precedence.

NOTE: the percentage inserted in the SOITEAM will take precedence over any other percentage inserted in the LOI data in the event of a discrepancy.

Each Consultant submitting a SOI who has a DBE/VOSB commitment with a technical issue as determined by the Illinois Tollway related to DBE/VOSB participation that is identified during initial review of a SOI by the Illinois Tollway shall be allowed, upon an email notification from the Illinois Tollway, an extended documentation period which will extend until 5:00 pm CT on the second business day after the day the notification is sent (e.g. if a Consultant is notified on Monday, extended documentation period concludes on Wednesday at 5:00 pm).

The extended documentation period allows a Consultant solely to correct their initial SOITEAM data to add or adjust DBE/VOSB participation to:

- Meet or exceed the initial DBE/VOSB commitment stated in the SOI, if that initial commitment was above the advertised DBE/VOSB goal, or
- Meet or exceed the goal, if the initial DBE/VOSB commitment stated in the SOI was below the advertised DBE/VOSB goal.

The Consultant shall submit updated SOITEAM data and LOI if additional or adjusted DBE/VOSB participation is secured by the end of the extended documentation period.

Under no circumstances is a Consultant allowed to remove, replace or reduce the DBE/VOSB participation of a certified DBE/VOSB firm listed in the initial LOI and SOITEAM data without prior written consent of Illinois Tollway. Increases to DBEs/VOSBs listed in the initial LOI and SOITEAM data are allowed. Under no circumstances is the Consultant allowed to change any documentation unrelated to the correction of the technical issue identified. Any adjustment made to the DBE/VOSB portion of the LOI and SOITEAM data during the extended documentation period must include a brief statement describing the revision(s) with resubmittal of the LOI and SOITEAM data. Any other changes to the original SOI will not be accepted.

Illinois Tollway Disclaimer Statement: Disadvantaged Business Enterprises (DBE) Directory, City of Chicago or Cook County, Illinois Minority and Women-Owned Business (M/WBE) Directories, or Small Business Administration SBA 8(a) Directory

Firms listed in either the Illinois Unified Certification Program (IL UCP) Disadvantaged Business Enterprises Directory or the City of Chicago Minority and Women-Owned Business Directory have been certified as a Disadvantaged Business Enterprise (DBE) by one of the IL UCP participating agencies (Illinois Department of Transportation, City of Chicago, Chicago Transit Authority, Metra and Pace) or by the City of Chicago. Firms listed in the County of Cook, Illinois M/WBE Directory have been certified as Minority or Women Owned Business Enterprises by the County of Cook, Illinois. Firms listed in the Small Business Administration SBA 8(a) Directory have been certified as SBA 8(a) business enterprises by the Small Business Administration.

The criteria, standards and procedures by which certification decisions are made can be obtained from any of the certifying agencies. These directories are to be used as an “informational source only” and the following must be considered:

- Certification does not mean that a firm is in any way prequalified to provide the products and/or services the firm claims it can provide. “Certification” means that the certifying agency has determined, on the basis of information provided and the representations therein, that a business is a bona fide DBE. The certifying agency does not, as a result of any listing, make any representation concerning the ability of any listed firm to perform work in the specialty listed;
- The Illinois Tollway does not, through its use of, and referral to, certification lists, make any representation concerning the ability of any listed firm to perform work in the specialty listed.
- The Illinois Tollway, in awarding a contract, has discretion in determining whether a DBE firm’s listed work categories are eligible to be counted toward the fulfillment of DBE contract goals; and
- It is the responsibility of all vendors to:
 - a) Conduct their own investigation to determine the capability and capacity of the DBE firm(s) to satisfactorily perform the proposed work; and
 - b) Ensure the DBE firm(s) is currently certified. A DBE is considered to have current certification if the firm is listed in the directory database of the pertinent certifying agency.

These directories list the most current certified firms. If there are any questions concerning these directories, please contact the certifying agency.

For more details about DBE utilization/participation, good faith efforts and related documentation requirements, refer to Exhibit H.

2.6 PARTNERING FOR GROWTH PROGRAM GUIDELINES (formerly Partnership-Mentor/Protégé Program Guidelines)

The Partnering for Growth Program and Documents have been updated to include the Reverse DBE_VOSB P4G Exhibit E and the standard DBE_VOSB P4G Exhibit E.

The Partnering for Growth Program applies to both Disadvantaged Business Enterprises (DBE) and Veteran-Owned Small Businesses (VOSBs) firms. Separate Exhibit E's – Partnering for Growth Program and Reverse Partnering for Growth forms are available for use for either a DBE or VOSB. Vendors may have multiple Partnering for Growth agreements in either the DBE and/or VOSB category(ies) and may have partnerships with both. More information on the Partner for Growth Program can be found at <https://www.illinoistollway.com/doing-business/diversity-development/programs/partnering-for-growth>

2.7 STATE OF ILLINOIS VETERAN SMALL BUSINESS PARTICIPATION AND UTILIZATION PLAN

This solicitation includes specific Veteran Small Business participation goal(s) as specified in each Item detail based on the availability of CEI-certified veteran-owned (VOSB) vendors to perform or provide the anticipated services required by this solicitation. The Veteran Small Business participation goal is applicable as specified in each Item detail. In addition to the other award criteria established for this solicitation, the Illinois Tollway will award contracts under this PSB to a Vendor that meets the goal or makes good faith efforts to meet the

goal. Vendor must submit a Utilization Plan and Letter of Intent with its SOI. Refer to PART III, List of Documents, Exhibits, and Other Attachments, for submittal instructions. As stated in Exhibit F, to qualify as an eligible VOSB the firm must be currently certified, at the time of the Professional Services Bulletin due date, by the State of Illinois Commission on Equity and Inclusion. Registration is available at: <https://supplierdiversitymanagementportal.illinois.gov/home.aspx>

2.8 TEAMING AGREEMENT

The action of joining forces with another vendor to submit on a Professional Services Bulletin (PSB) is called Teaming. All former policies and procedures referring to Joint Venture still apply, with Teaming as the name of the effort.

Team SOIs shall comply with the same requirements set forth for individual SOIs, including, but not limited to, the submittal (under the Team's SOI code name) of the SOI, SOITEAM data, Exhibits, and Disclosures. A Team SOI represents a unique submittal and shall not be combined with an individual SOI from the Team Lead or submittals from other, unique teams.

Team members and a Team Leader must clearly be identified with the SOI submittal, and Team Lead shall be considered the Prime Consultant upon selection. A Team Lead can only select one D/M/WBE category but may provide evidence of multiple certifications by attaching any supporting documentation in the attachments tab before submitting. The selection criteria for the Team will include the Team members' prequalification categories, and the sum of the individual firm's work capacity and evaluation history.

The Illinois Tollway requires the Team to **self-perform no less than 40%** of the work, meaning the Team cannot subcontract more than 60% of the project work. The scope of work to be performed by each Team member and its Subconsultants must be clearly defined and leave no room for interpretation in the SOI. Each Team member must make a substantial contribution to the performance of the work being completed by the Team. Factors that may be considered by the Illinois Tollway, in its sole discretion, in determining what constitutes a substantial contribution include, but are not limited to, the number of participants in the Team, the professional qualifications of each member, and the nature of the work being performed.

The Illinois Tollway **DOES NOT** have a form for Teaming Agreements. However, the firms submitting as a Team are required to obtain and submit their Teaming Agreement. A Teaming Agreement, signed by all members, **MUST** be submitted within ten (10) business days after contract negotiations and prior to Board award. The Teaming Agreement will clearly identify the Team members, their percentage interest / share, as well as respective rights and responsibilities. The Teaming Agreement shall further designate a Team Lead who will assume responsibility for invoicing. **The Team may have no more than three participants.**

Each Team member shall procure and maintain separate insurance policies that meet the Illinois Tollway's insurance requirements. The Tollway's standard insurance requirements are set forth in the Vendor Agreement boilerplates (See Illinois Tollway website: <https://www.illinoistollway.com/doing-business/construction-engineering/forms> under Doing Business> Construction and Engineering: Vendor Resources under Vendor Forms). Each Team member will procure and maintain policies that meet the Prime Consultant's required level of coverage and shall indemnify the Team and the Tollway against claims arising from their performance under the Team, as well as agreeing to remain joint and severally liable upon termination of the Project and/or the Team. In the event of the termination of the Team, the insurance and indemnification rights of the Team must be assignable to the Illinois Tollway as a matter of law. Proof of compliance with these requirements must be submitted to the Illinois Tollway prior to issuance of the Illinois Tollway's Notice to Proceed.

Team SOI submittal requirement overview:

- Designate a single point of contact who shall serve as the Team's primary contact with the Illinois Tollway.
- Indicate the Team member responsible for each prequalification category.
- The Team Lead shall submit outstanding work obligations, and Vendor Disclosures (formerly Forms A) or IPG Active Registration Vendor Disclosures (formerly Forms B) (as applicable) for each of the Team members.
- Identify the Team member responsible for invoicing.

- For Exhibit A, plus other required documents specified in the PSB, combine the information for all participating Team members.
- Submit the Teaming Agreement within ten (10) days after contract negotiation and prior to Board award.

A firm planning to submit a SOI as a Team is required to contact the Illinois Tollway for a Team SOI Firm Name Code. Contact CS staff via e-mail at csstaff@getipass.com. The Team SOI Firm Name Code as provided by the Illinois Tollway is required to identify and process the submittal as a Team proposal.

Only the Team Lead is required to fill out the SOITEAM data on behalf of the Team. It is imperative that the other Team members do NOT submit SOITEAM data if they are not the Team Lead. The Team Lead must clearly identify the Team members and Subconsultants doing work for or in conjunction with the Team within the Team SOITEAM data submittal.

Example of a Team (TM) submittal: Companies forming Team are:

- Company A
- Company B
- Company C
- Team Firm Name Code as provided by the Illinois Tollway is: ABC_TM

Team members naming parameters are:

- ABC_TM (Company A) "Managing Partner"
- ABC_TM (Company B)
- ABC_TM (Company C)
- Subconsultants to the Team Lead: J. Smith Consulting (Company B)
- F.J. Engineering (Company C)
- Subconsultants to the Team members: G. Engineering (Company A)
- Materials Inc. (Company A)
- Surveying Services (Company B) Jersey Consulting (Company B) KL Services (Company C)
- LMN Engineering (Company C)

2.9 MANUALS, PROCESSES AND GUIDELINES

Manuals are available on the Tollway website to provide guidance on contract requirements, procedures and responsibilities.

<https://www.illinoistollway.com/doing-business/construction-engineering/manuals-processes-guidelines#Construction%20and%20Materials>

2.10 PHASE II: DESIGN ENGINEERING SERVICES

The scope of work will generally include certain Phase II engineering services to be provided during construction. Such services may include, but not be limited to, shop drawing review, value engineering proposal review, attending construction phase meetings and responding to requests for information related to design. The scope of such services will be determined after the Consultant is selected as appropriate.

2.11 PHASE III: CONSTRUCTION ENGINEERING SERVICES

The following applies to all Phase III Engineering service items.

After the Consultant has been selected, the Construction Manager (CM) shall provide the following to the Illinois Tollway:

The Consultant selected for the Construction Management (CM) Services shall submit for the Illinois Tollway's review and approval, a management plan for the specific Project(s) for which the Consultant is selected. This management plan shall include an outline of the full-time or part-time plant, on-site inspection services, sampling and laboratory testing the Consultant is providing for Quality Assurance. The selected CM's Consultant's Quality Program (CQP) shall include the identification and pre-qualifications of the Field

Inspectors and Laboratory Technicians to be assigned to this project as employees of the Consultant or a qualified Subconsultant. The CQP shall include periodic verification by an independent qualified Subconsultant that the Quality Assurance operations are proceeding as specified using the proper methods of sampling and testing.

The name of any accredited material laboratory(ies) to be utilized for the quality assurance work must be provided with the CQP. The laboratory must be accredited under the AASHTO Accreditation Program (AAP) for all required test procedures specified in IDOT Bureau of Materials Policy Memorandum "Minimum Private Laboratory Requirements for Construction Materials Testing or Mix Design."

2.12 CONSTRUCTION AND QUALITY ASSURANCE CONSULTANTS

Personnel performing materials testing for aggregate, PCC, and HMA shall have completed the appropriate IDOT Quality Management Training Program classes. Personnel performing soils inspection and field tests shall have completed IDOT class S-33, Soils Field Testing and Inspection.

The Field Inspectors assigned to any project under this PSB for on-site Quality Assurance for earthwork quality control and for monitoring the on-site asphalt construction work must be prequalified by having passed the IDOT Nuclear Density training course. The Field Inspectors assigned to the on-site quality control of concrete placement shall be prequalified by having passed the IDOT/ACI Portland Cement Concrete Level I training course. Personnel performing soils field tests shall have completed IDOT class S-33, Soils Field Testing and Inspection.

The Vendor's Quality Assurance responsibilities at the material production plants shall be performed by a Field Inspector having passed IDOT Level I and Level II (HMA and PCC) training courses to perform the specified inspection of approved materials at the concrete and asphalt plants.

2.13 QUALITY ASSURANCE PREQUALIFICATION CATEGORY

The prequalification requirements for Quality Assurance Testing are required and will follow the guidelines set by IDOT in the Prequalification information "Description and Minimum Requirements for Prequalification" SPECIAL SERVICES - Quality Assurance Testing.

The information about the Quality Assurance Testing prequalification can be located on IDOT's website at: <https://public.powerdms.com/IDOT/documents/2617622/Description%20And%20Minimum%20Requirements%20For%20Prequalification>

2.14 CLARIFICATION OF QUALITY CONTROL/QUALITY ASSURANCE REQUIREMENTS

The Quality Control/Quality Assurance personnel on Exhibit A shall not be the same personnel preparing the design documents. If the Prime Consultant does not have personnel to cover the QC/QA requirements, then a Subconsultant prequalified in the category may be used.

The following highlighted sections have been added to the Guidelines in the Professional Services Bulletin and the solicitations.

Complete **Exhibit A** as follows:

- List the required key personnel to match required prequalification categories and any additional personnel requirements designated in the project solicitation. Include firm name if work is to be completed by a Subconsultant; and
- QC/QA personnel must be different individuals than those preparing the design documents.

2.15 CONSULTANT CONTRACT FORMS

Standard forms exhibits and associated instructions to be used by Construction Management (CM) and Design Section Engineering (DSE) Consultants in preparing proposals and agreements with the Illinois Tollway are located on the Illinois Tollway website. Contracts will be awarded based on the standard Agreement templates. Selected Consultants should be prepared to execute the appropriate Agreement template. Any exceptions shall be noted in the Consultant's SOI.

<https://www.illinoistollway.com/doing-business/construction-engineering/forms>

2.16 SELF-PERFORMANCE

The Illinois Tollway requires the Prime Consultant (non-team) to self-perform no less than 40% of the work.

PART III: REPRESENTATIONS AND INSTRUCTIONS

3.1 SELECTION CRITERIA

Members of the Vendor Selection Committee will not be available to discuss specifics of projects listed in this PSB between the date of the submittal and the Selection Committee meeting. Please do not send letters or e-mails expressing interest in specific projects to members of the Vendor Selection Committee.

Selection of professional Vendors by the Illinois Tollway is based on the firm's professional qualifications, related experience, expertise, and availability of key personnel to be assigned to the project, satisfaction of diversity goals and contract compliance and what is best for the Illinois Tollway. SOIs will be evaluated based on the following criteria:

- Specialized experience when required, technical competence of the personnel, and experience of the firms and/or Subconsultants proposed;
- Performance history and expertise of the firm and any proposed Subconsultants with the work described in the Item;
- Particular attention will be given to appropriate cost saving measures and innovative ideas that will benefit the Illinois Tollway;
- Ability to complete the work in the time required and the firm's existing workload;
- Commitment and availability of Key Personnel during the term of the contract;
- Proposed method of accomplishing the project's objectives;
- Demonstrated understanding of an inclusive and substantive DBE/VOSB utilization plan; and
- Contract Compliance will evaluate submitted forms and documents, including but not limited to the SOI, LOI, and DBE/VOSB certification(s) for completeness, accuracy and verification that all requirements of the PSB have been met.

Consideration will also be given to the quality and scope of utilization plan which demonstrates an understanding of an inclusive and substantive DBE and VOSB U-Plan (Reference Section 2.5 and 2.7 for definition of "DBE" and "VOSB"), VOSB and Partnering for Growth (formerly Mentor Protégé proposals).

Consideration will also be given to the completeness and content of the compliance documentation submitted (SOI and LOI), whether the submitted documents show that at least the advertised diversity goal(s) has/have been met, and if the certification letters submitted are current and the area(s) of specialty as certified match with the scopes of work of the respective DBE/VOSB participants.

3.2 SCHEDULE FOR VENDOR SELECTION

The Illinois Tollway anticipates selecting Vendors based on the estimated schedule below:
Representatives from the Illinois Tollway will contact selected firms to schedule introductory meetings.

TASK	DATE DUE
Publish	February 7, 2025
Pre-proposal meeting 10:00:00 a.m. Central Time	February 14, 2025
Last Day for Questions no later than 4:30:00 pm Central Time	March 3, 2025
Complete SOIs are due no later than 4:30:00 pm Central Time on this date, including all required Attachments/Exhibits as specified in this PSB.	March 14, 2025
Selection Committee Meeting:	April/May 2025
Estimated Board Approval (earliest)	June 2025
Estimated Notice to Proceed (earliest)	August 2025

3.3 GUIDELINES FOR SUBMITTING STATEMENTS OF INTEREST (SOI)

The firm acting as the Prime Consultant must be prequalified in all of the prequalification categories requested in the project advertisement even if they plan to subcontract part of the project, except where noted in a specific project advertisement. Any Prime Consultant or Subconsultant must be prequalified by IDOT in the category of work they are performing or as stated in the item description, unless the Subconsultant is being mentored in the Partnering for Growth Program. **SEE NOTICE BELOW.**

3.3.1 REQUIRED FORMAT FOR SUBMITTING STATEMENTS OF INTEREST

3.3.2.1 THE FOLLOWING EXHIBITS AND DATA SHALL BE SUBMITTED IN ACCORDANCE WITH THE PSB SUBMITTAL INSTRUCTIONS AND SHALL BE DOWNLOADED FROM THE ILLINOIS TOLLWAY WEBSITE. ALL EXHIBITS SUBMITTED FOR THIS PSB MUST BE CURRENT. EXHIBITS FROM PREVIOUS PSBs WILL NOT BE ACCEPTED.

- Exhibit A: Proposed Staff
 - Required - Submit as a separate pdf document.
 - Shall include resumes
- Exhibit C: Instructions for Completing Exhibit C and Current Obligations form
 - Required - Submit as a separate pdf document.
- Exhibit D: Availability of Key Project Personnel
 - Required - Submit as a separate pdf document.
- Exhibit E-DBE/VOSB: Partnering for Growth Program
 - If proposing a mentor-protégé arrangement with a DBE or VOSB firm, this Exhibit is required.
 - Submit as a separate pdf document.
- Exhibit E- Reverse DBE/VOSB: Partnering for Growth Program
 - If proposing a mentor-protégé arrangement with a DBE or VOSB firm where the subconsultant is mentoring, this Exhibit is required.
 - Submit as a separate pdf document.

- Exhibit F: Veteran Small Business Participation and Utilization Plan
 - If the item includes a Veteran Goal, this Exhibit is required.
 - Submit as a separate pdf document.
- Exhibit H: DBE Participation and Utilization Plan
 - If the item includes a DBE Goal, this Exhibit is required.
 - Submit as a separate pdf document.
- Illinois Tollway Standard Business Terms and Conditions
 - Required - Submit as a separate pdf document.
- SOITEAM Data
 - Required, see Section 3.4.3 Instructions for Submitting the SOITEAM Data

3.3.2.2 PREQUALIFIED FIRMS MAY INDICATE THEIR DESIRE TO BE CONSIDERED FOR SELECTION ON ANY OF THE PROJECTS LISTED WITHIN THIS PSB BY SUBMITTING A SEPARATE SOI FOR EACH PROJECT.

3.3.2.3 EACH SOI MUST BE SUBMITTED USING THE FOLLOWING BASIC FORMAT:

COVER SHEET

Include Full Legal Prime Consultant Name, PSB Number, Item Number, and **all** known Subconsultants (Full Legal Firm Names).

Section 1. Executive Summary (limit of 5 pages)

- A. Legal Name of Prime Consultant, address, telephone number, e-mail address and contact person.
- B. List all known Subconsultants, the work the firm(s) will be performing and a contact person for each. Identify any DBEs (Reference Section 2.5 for definitions) and VOSBs. Include Mentor and Protégé data if applicable.
- C. Name of Project Manager.
- D. Name of Project Engineer/Resident Engineer.
- E. Project Understanding.
- F. Project Approach (include brief statement of firm's unique qualifications and experience, approach to the project's specific challenges such as maintenance of traffic, environmental constraints, budget constraints, schedule constraints, design challenges, etc.).
- G. Statement that firm will meet or exceed the DBE goal and VOSB goal as applicable for the item. Include the proposed percentage of work to be completed by proposed DBE and VOSB firms (Percentages shall match those submitted with the SOITEAM data). For each proposed DBE firm, include a current certification letter that shows that the DBE/VOSB firm is certified in its scope(s) of work stated in the SOI and its LOI. (IDOT Prequalification in the respective scope will meet this requirement.)

Section 2. Organization Chart

Include names and titles for all Key Project Personnel.

Section 3. Relevant Project Experience

Include a minimum of three (3) relevant projects of equal or greater complexity accomplished within the past five (5) years, demonstrating the firm's experience in the type of work required for this project. Color graphics and photographs may be sent with the files.

Include performance ratings for past work done for the Illinois Tollway, IDOT, or any other government agencies or public bodies, if applicable.

Section 4. Conflicts of Interest

Statement acknowledging any known or potential conflicts of interest the Prime Consultant may have.

NOTICE

Pursuant to Illinois Department of Transportation (IDOT) Prequalification rules and procedures, the Illinois Tollway will accept your firm's prequalification the same as IDOT, in that your firm is prequalified until (Fiscal Year + 1 year). As per IDOT, your firm will be given an additional six months from this date to submit the applicable portions of the "Statement of Experience and Financial Condition" (SEFC) to IDOT to remain prequalified.

The firm remains prequalified during this six (6) month grace period. Once the data is submitted to IDOT, either before or on the due date, the firm remains prequalified in the current categories until IDOT reviews a category and decides. If there is not a submittal by the due date, the firm is automatically listed as not approved.

IDOT provides a listing of prequalified consulting firms on the website:

<http://www.idot.illinois.gov/doing-business/procurements/engineering-architectural-professional-services/index>

This list is typically updated weekly and is based on the most recently approved SEFC application. Firms are encouraged to monitor their prequalification status in IDOT's EPAS system. This notice also applies when utilizing a Subconsultant to meet prequalification requirements on a project.

3.4 SUBMITTAL INSTRUCTIONS

All submittals for this PSB will be received through the Illinois Tollway's Trimble PSB SOI process at: <https://app.e-builder.net/>. Contact wbpm@getipass.com for training and login information.

Firms that are teaming and preparing an SOI must use the code name assigned for the team. When a firm is submitting on behalf of a team, a unique Trimble account and login ID are required. The team SOI submittal must be created and submitted by the Prime Consultant. (**Important Reminder:** if a Prime Consultant is submitting for themselves, that account and login ID will be different from the account and login ID that they will use to submit for a team).

The preparation of the SOI for submittal in Trimble must be done in one Trimble account, i.e., one account login ID. Each account/login has access only to the Trimble PSB SOI process instance that is being created in that account. Each Trimble PSB SOI process instance can only be seen from the login that created it.

One SOI is required for each PSB item. The subject line will be created in the Trimble PSB SOI process when you select the item number your firm will be submitting for from the pull-down menu. Complete Trimble instructions for the PSB SOI process can be found in the upper right-hand corner of the SOI instance.

This is not an invitation for bids. Firms properly prequalified for the projects listed herein may indicate their desire to be considered for selection by submitting an SOI to the Illinois Tollway via the Trimble PSB 25-1 SOI process.

The Illinois Tollway follows the Qualifications Based Selection (QBS) process mandated by Illinois statute (30 ILCS 535/1 et seq.): Architectural, Engineering, and Land Surveying Qualifications Based Selection Act for selecting qualified Vendors under this PSB.

SOI Trimble submittals must be received by the due date and time as noted in this solicitation. Any submittals received after that time will be considered late and the user will receive an Trimble notification stating that the PSB SOI date and time has expired. Late submittals will not be accepted by the Illinois Tollway. NOTE: You must set the Time Zone field on your Trimble account profile page to "(UTC-06:00) Central Time (US & Canada)" so that you can submit your SOIs up until the submittal deadline.

Please carefully read the instructions below **BEFORE** submitting your SOIs.

3.4.1 GENERAL INSTRUCTIONS

It is CRITICAL that submittal instructions be followed. All Forms must be submitted per the instructions provided. Failure to do so may result in an incomplete submittal resulting in your firm being disqualified. For further information on accessing the Illinois Tollway Website, PSB and Exhibits, please refer to the Table of Contents.

3.4.2 NAMING AND LABELING INSTRUCTIONS

- The Illinois Tollway requires electronic submittals for the Professional Services Bulletin's SOIs via the established Trimble PSB process. All respondents must utilize a unique 2 to 6-character SOI Firm Name Code assigned by the Illinois Tollway.
- To determine the designated SOI Firm Name Code go to the Illinois Tollway's website under Doing Business>Construction and Engineering - see Vendor Resources and click on the link to the Professional Services Bulletin page. The current SOI Firm Name Code List will be posted under the "Required Forms" section. If your firm is not included on the list, or your firm name has changed, please contact PSB Coordinator, csstaff@getipass.com, for an assigned SOI Firm Name Code.
- When submitting "Team" files please, use the **new** SOI Firm Name Code assigned by the Illinois Tollway to the Team. The SOI Firm Code Name is exclusive to the electronic submittal – meaning it does not establish the name of the Team. Please contact PSB Coordinator, csstaff@getipass.com, for an assigned SOI Firm Name Code.

3.4.3 INSTRUCTIONS FOR SUBMITTING THE SOITEAM DATA

The SOITEAM information is now input into the "SOITEAM data" section in Trimble. The following still apply to your submittal. Failure to provide the required information in the SOITEAM may result in the SOI being deemed non-responsive.

- Vendors are required to complete the SOITEAM data section for each Item, completing all columns shown for the Prime Consultant, and for every Subconsultant that is being proposed. ***Do not enter "TBD" or enter a range of percentages, and do not leave blank cells. Totals must equal 100%.***

TEAM submittals:

- NOTE: If a firm is submitting as a Prime Consultant and also as a Team lead for one or more teams, a separate SOI and the SOITEAM data information must be submitted for each. DO NOT combine SOITEAM data information for unique SOI submittals.
- When entering Prime Consultant or Subconsultant information in the SOITEAM data section, please follow the below instructions:
 - Add new item for firm information for each team member
 - Under Team Member Role, select Prime (Lead Teaming Partner) or Prime (Non-Lead Teaming Partner)
 - Teams with three firms may enter an additional firm and select Prime (Non-Lead Teaming Partner)
 - Select Subconsultant for the Firm Role for any additional firms that are included in the SOI.
 - Below is a sample of how the Team members and Subconsultants are to be entered and submitted within the SOITEAM data section:

Firm Information Group By Show Filter Select All Row Height: 18 Download Template Import Delete

In this Grid: Include ALL team members (e.g., prime, teaming firms, and subconsultants). Total percent at the bottom of the **% of Work to be Completed by Consultant** column must equal 100.

To import SOI Team data: Click the "Download Template" link to the left of the "Import" button immediately above. Open the downloaded spreadsheet, enter the SOI Team information, and save. Click the "Import" button and choose the template. Click "Import."

#	SOITeam Firm Name	Team Member Role	% of Work to be Completed by Consultant	Role of consultant	Contact e-mail	D/M/WBE Status	Veteran Status
Grand Totals (0 Items)			0.00				

Add New Item for Firm Information

- * SOITeam Firm Name
- * Team Member Role
- * % of Work to be Completed by Consultant
- * Role of consultant
- * Contact e-mail
- * D/M/WBE Status
- * Veteran Status
- * DBE (Disadvantaged Business Enterprise) Program
- * Male or Female
- * Ethnicity
- * Multiple Owners
- * ESOP
- * P40?
- * P40 Role
- * P40 Partner(s)

Clear Add

3.4.4 INSTRUCTIONS FOR Trimble SUBMITTAL

It is important that your Trimble submittal be prepared according to the following instructions:

A Statement of Interest file and required exhibit files must be attached to each SOI submission in Trimble. Files must a) be attached to the SOI process instance and b) be saved in the document folder corresponding to the item number. If a file will be used for more than one submission, a separate, unique file must be saved in the document folder for each item. Do not attach a file already saved in one item folder to an SOI submission for a different item.

The Word and/or PDF documents available (except for SOIs) on the Illinois Tollway website are labeled as follows:

FORM	FILE NAMING CONVENTION - EXAMPLE -	DIRECTIONS
SOI – Statement of Interest Includes cover sheet, executive summary, organizational chart and relevant project experience. For each Item submittal, use firm's 2-6-character SOI Firm Name Code (this example = ABC immediately followed by underscore SOI plus a 2-digit Item Number (i.e., SOI01 through SOI 99). See Section 3.3.2.3 SOI format Instructions.	ABC_SOI01.pdf	Submit as a separate document on Trimble
Teaming Agreement	ABCXYZ_SOI01_TM.pdf	Submit as a separate document on Trimble

SOI use the team's unique 2-6-character SOI Team Name Code		
Illinois Tollway Standard Business Terms and Conditions	ABC_TC.pdf	Submit as a separate document on Trimble
Teaming Agreement Illinois Tollway Standard Business Terms and Conditions.	ABC_TC_TM.pdf DEF_TC_TM.pdf GHI_TC_TM.pdf	Submit as a separate document on Trimble for each Team member
Illinois Board of Elections Registration document	ABC_BOE.pdf	Submit as a separate document on Trimble
Teaming Agreement Illinois Board of Elections Registration document	ABC_BOE_TM.pdf DEF_BOE_TM.pdf GHI_iBOE_TM.pdf	Submit as a separate document on Trimble for each Team member
Vendor Disclosure (formerly Forms A) or IPG Active Registered Vendor Disclosure (formerly Forms B) (Disclosures) – are required. To submit use your 2-6-character SOI Firm Name Code followed by DS. Teaming Agreement Vendor Disclosures (formerly Forms A) or IPG Active Registration Vendor Disclosures (formerly Forms B) (Disclosures) – are required. Use the unique 2-6-character SOI Firm Name Code for EACH individual Team firm name followed by _DS_TM	ABC_DS.pdf ABC_DS_TM.pdf DEF_DS_TM.pdf GHI_DS_TM.pdf	Submit as a separate document on Trimble Submit as a separate document on Trimble for each Team member
<u>Exhibit A</u> – Proposed Staff – Key Project Personnel. a. Include resumes for Key Project Personnel proposed for the project (Prime Consultant and Subconsultants for those specific positions identified in the PSB item description). Resumes for each individual should not exceed two (2) pages and should include only relevant experience for the specific Item. b. List the Key Project Personnel to match the required prequalification categories and any additional personnel requirements designated in the Bulletin Items. (Include firm name if work is to be completed by a Subconsultant). c. QC/QA personnel must be different individuals than staff preparing the design documents. Construction Management Services require the names and resumes of Certified Record Documentation Reviewers and Inspectors that will be assigned to the project. Specific requirements are explained in the Phase III Items.	ABC_ExA.pdf	Submit as a separate document on Trimble

3.4.5 COMMON MISTAKES

The following is a list of common mistakes found when submitting a Professional Services SOI. This list is not intended to be exhaustive and Vendors should make every attempt to avoid these common mistakes in their submittals or the submittal may be deemed non-responsive and may not be scored.

- General
 - Failure of minimum 40% self-performance by the Prime Consultant
 - Inconsistent percentages throughout SOI submittals
 - Incorrect PSB #
 - Incorrect Contract #
 - Changing anonymous Trimble PSB account profile entries
 - Submitting too close to the deadline
 - Failure to save attached document in the correct item folder for that submission.
 - Failure to provide the required DBE/VOSB participation/utilization information in the SOITEAM may result in the SOI being deemed non-responsive.
- SOITEAM Data
 - Leaving blank spaces
 - Percentage does not equal 100% – this percentage should include the Prime Consultant and Subconsultants
 - Failure to include all Firms from the SOI (Prime Consultant, Team, Subconsultants etc.)
- Exhibits
 - Failure to submit Exhibit E when proposing P4G plan in the SOITEAM data
 - Unnecessarily submitting Exhibit E when not proposing P4G in SOITEAM data
 - Failure to submit correct version of Vendor Disclosures (formerly Forms A) or IPG Active Registration Vendor Disclosures (formerly Forms B)
 - Failure to list all required Key Personnel on Exhibit A
 - Change of the title of Key Personnel on Exhibit A
 - Failure to list % on Terms and Conditions FEIN page
 - Percentages different than SOITEAM Grid Data
- Teams
 - Failure to include all Team members on Exhibit C (Workload)
 - Failure to include Terms and Conditions for all Team members
 - Failure to include Vendor Disclosures (formerly Forms A) or IPG Active Registration Vendor Disclosures (formerly Forms B) for all Team members

3.5 DISCLOSURES AND CERTIFICATIONS

3.5.1 INSTRUCTIONS FOR SUBMITTING DISCLOSURES

The submittal shall contain either Vendor Disclosures (formerly Forms A) or IPG Active Registration Vendor Disclosures (formerly Forms B). SOIs submitted without Vendor Disclosures (formerly Forms A) or IPG Active Registration Vendor Disclosures (formerly Forms B) shall be deemed non-responsive. Vendor Disclosures (formerly Forms A) section shall be returned by Firm(s) that are not registered in the Illinois Procurement Gateway (IPG). Enter the BidBuy number on either Vendor Disclosures (formerly Forms A) or IPG Active Registration Vendor Disclosures (formerly Forms B) when asked to supply an IPB Reference #.

IPG Active Registration Vendor Disclosures (formerly Forms B) shall be returned by Firm(s) that have a current, approved IPG registration.

Vendor Disclosures (formerly Forms A) Section

Complete this section if you **are not using** a current, approved Illinois Procurement Gateway (IPG) Registration number.

<https://www.illinoistollway.com/doing-business/construction-engineering/forms>

1. Business and Directory Information
2. Illinois Department of Human Rights Public Contracts Number
3. Authorized to Do Business in Illinois
4. Standard Certifications
5. State Board of Elections
6. Disclosure of Business Operations in Iran
7. Financial Disclosures and Conflicts of Interest
8. Taxpayer Identification Number
9. Signature

IPG Active Registration Vendor Disclosures (formerly Forms B) Section

Complete this section only if you are **using** a current, approved IPG Registration number.

<https://www.illinoistollway.com/doing-business/construction-engineering/forms>

1. Certification of Illinois Procurement Gateway Registration #
2. Certification Timely to this Solicitation
3. Disclosures of Lobbyist or Agent
4. Disclosure of Current and Pending Contracts
5. Signature

3.5.2 INSTRUCTIONS FOR SUBMITTING ILLINOIS TOLLWAY STANDARD BUSINESS TERMS AND CONDITIONS

Submit the Illinois Tollway Standard Business Terms and Conditions. This document is also available on the Illinois Tollway website and submit as a separate document on Trimble. Team leads must submit Illinois Tollway Standard Business Terms and Conditions for themselves and team members.

3.6 PROTEST PROCEDURE

Vendors may submit a written protest to the Protest Review Office following the requirements of the IDOT Standard Procurement Rules 44 ILL ADM 6.390 through 6.440. All protests shall be in writing and filed with the CPO within seven (7) calendar days after the protester knows or should have known of the facts giving rise to the protest. Protests filed after the seven (7) calendar day period will not be considered. In addition, protests that raise issues of fraud, corruption or illegal acts affecting specifications, special provisions, supplemental specifications and plans must be received by the CPO no later than fourteen (14) calendar days before the date set for opening of bids. The Protest Review Office information is as follows:

Chief Procurement Office for General Services
Attn: Protest Review Office
300 West Jefferson, Suite 128
Springfield, IL 62702

Email: cpogs.pro@illinois.gov

3.7 USEFUL LINKS

The Illinois Tollway website- <https://www.illinoistollway.com/>

Professional Service Bulletin- <https://www.illinoistollway.com/doing-business/construction-engineering/bids-bulletins-awards>

Vendor Contract Forms (required forms for submittal) - <https://www.illinoistollway.com/doing-business/construction-engineering/forms>

Vendor Invoicing Forms - <https://www.illinoistollway.com/doing-business/construction-engineering/forms>

Partnering for Growth Program - <https://www.illinoistollway.com/doing-business/diversity-development/programs/partnering-for-growth>

Trimble Unity Construct website- <https://app.e-builder.net/>

Trimble Unity Construct PSB SOI user manual, FAQ file, and training videos- <https://app.e-builder.net/public/PublicFolderView.aspx?FolderID=%7bdc0355ee-4323-458e-91b5-547c6655b5f5%7d>

Trimble Unity Construct PSB SOI training webinar dates and registration information- <http://www.onlineregistrationcenter.com/registerlist.asp?m=176&p=134&group=57&tid=222>

Bid Buy - <https://www2.illinois.gov/cpo/general/Pages/BidBuy/BidBuy.aspx>

Chief Procurement Office/Illinois Procurement Gateway (IPG) – Vendor Registration - <https://ipg.vendorreg.com/>

State Board of Elections - <https://www.elections.il.gov/#News>

Illinois Department of Central Management Services – Travel Reimbursement Schedule - <https://www2.illinois.gov/cms/employees/travel/pages/default.aspx>

National Institute of Standards and Technology - <http://www.nist.gov/>

Illinois Department of Transportation - <http://www.idot.illinois.gov/>

Illinois Department of Transportation Manual of Test Procedures for Materials <https://public.powerdms.com/IDOT/documents/2732503>

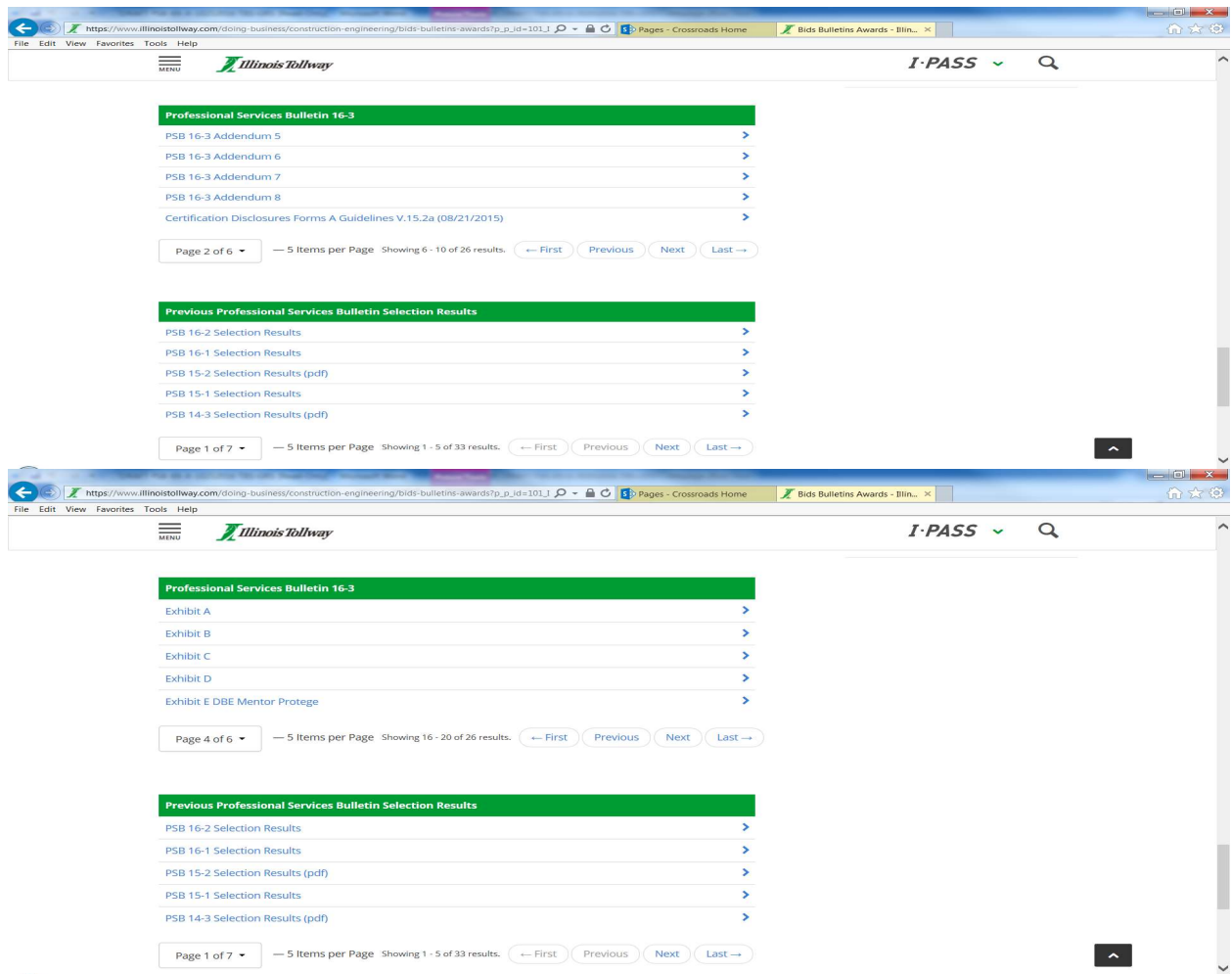
3.8 ILLINOIS ePROCUREMENT BidBuy NOTICE

To register in the Illinois eProcurement System, please follow these instructions:

- Go to <https://www.bidbuy.illinois.gov/bsol/>
- Please direct questions regarding the registration process or the use of BidBuy to email address: stateuser.bidbuy@illinois.gov or the Procurement Help desk at 217-557-8992.

3.9 INFORMATION ON ACCESSING ILLINOIS TOLLWAY WEBSITE

- Go to www.illinoistollway.com
- Click on “Menu”
- Click “Doing Business”
- Click “Construction and Engineering”
- Middle of page, under “How Can We Help You? / Vendor Resources” click “Professional Services Bulletin”
- *Helpful Hint: A limited number of items are shown under “Professional Services Bulletin” on each page; click “Next” to view additional items.



3.10 FUTURE PROFESSIONAL SERVICES BULLETIN NOTIFICATIONS

To receive notification from the Illinois Tollway that a Professional Services Bulletin has been posted, or to Unsubscribe, please email Catrice Hardwick-Giles [Here](#) or call 630-241-6800 extension 4653.

Include the following information:

Please add this contact to receive notification from the Illinois Tollway that a Professional Services Bulletin has been posted:

Name of firm _____

E-mail address _____

Contact person (corresponding with e-mail) _____

3.11 RESERVED

3.12 PSB 25-1 EXCHANGES WITH FIRMS AFTER SOI SUBMISSION

Discussions may be held with Firms to clarify certain aspects of their SOIs.

- Discussions are limited exchanges between the Tollway and Firms that may occur during the responsiveness determination. For purpose of this PSB, such discussions shall be exchanged only between the Firm and the Designated Procurement Contact for this PSB.
- Please use the e-mail address: csstaff@getipass.com
- These exchanges shall not provide an opportunity for the Firm to revise its SOI, but may only address:
 - Deficiencies
 - Errors
 - Omissions
- Responses are due to the Illinois Tollway on the due date established by the Illinois Tollway. Discussions may be initiated by the Illinois Tollway after that time. Firm's responses that are not received timely shall result in the SOI being considered non-responsive.

Certain requirements are not open for discussion and, if not met, shall render the SOI non-responsive:

- Late submissions, including omission of the required documents as stated in the PSB:
 - SOI
 - Disclosures (DS)- Vendor Disclosures (formerly Forms A) or IPG Active Registration Vendor Disclosures (formerly Forms B)
- Omission of State of Illinois requirements
- Inability to meet eligibility requirements as stated in 44 Ill. Admin. Code 625.70, Confirmation of Eligibility.



PROFESSIONAL SERVICES BULLETIN 25-1

Pre-Proposal Meeting

February 14, 2025



INTRODUCTIONS

The background of the slide is a photograph of a multi-lane highway under construction. In the foreground, a wide, unpaved shoulder or new lane is visible. Several semi-trucks and cars are traveling on the existing lanes. A yellow diamond-shaped road sign with the number '13' is positioned on the shoulder. In the distance, there are trees and a city skyline under a clear blue sky. A large billboard on the right side of the highway reads 'WELCOME TO NORTHLAKE' and 'NORTHLAKECITY.COM'. The overall scene depicts a major infrastructure project.

Danna Hall

**Procurement and
Construction
Services Manager**

Alex Karahalios

**Business Analyst
Diversity**

Grace Perez

**Contract Compliance
Manager**

Cindy Williams

**Deputy Chief of
Program
Implementation**

AGENDA

- Trimble Unity Construct Instructions and Training (previously e-Builder)
- PSB Submission
- PSB Schedule
- PSB Questions Submittal
- Tollway Compliance
- Diversity Requirements
- PSB 25-1 Items

SUBMISSION VIA TRIMBLE UNITY CONSTRUCT

Section 1.2.1 PSB 25-1 summary

Information pertaining to the Trimble Unity Construct process for PSB 25-1 can be found in the Public Folder at:

- <https://app.e-builder.net/public/publicLanding.aspx?QS=8b550cb238ba4d768a53aa87d3c9cdcd>

You will need to perform the following before you can submit an SOI in Trimble Unity Construct:

- Review Trimble Unity Construct resources, including PSB SOI user manual, FAQ file, and videos (see Public Folder link above)
- Obtain Trimble Unity Construct Login ID if necessary (see Section 3.4 Submittal Instructions)
- Obtain Firm Code Name if necessary (see Section 3.4 Submittal Instructions)
- Complete Webinar Training (see Section 3.7 Useful Links for training webinar registration link)

TRIMBLE UNITY CONSTRUCT WEBINAR TRAINING OPPORTUNITIES

Register for Training

- <http://www.onlineregistrationcenter.com/registerlist.asp?m=176&p=134&group=57&tid=222>

Scheduled Virtual Training Sessions

<u>Date</u>	<u>Time</u>	<u>Date</u>	<u>Time</u>
Tuesday, February 18, 2025	2:00 PM - 3:00 PM	Monday, March 3, 2025	11:00 AM - 12:00 AM
Friday, February 21, 2025	10:00 AM - 11:00 AM	Friday, March 7, 2025	10:00 AM - 11:00 AM
Tuesday, February 25, 2025	10:00 AM - 11:00 AM	Wednesday, March 12, 2025	2:00 PM - 3:00 PM
Thursday, February 27, 2025	10:00 AM - 11:00 AM	Friday, March 14, 2025	10:00 AM - 11:00 AM



SOI SUBMISSION

SOI

Illinois Tollway Standard Business Terms and Conditions

- Submit as a separate PDF document
- If proposing as a Team, required for all Team members

Board of Elections Registration Certification Disclosure Forms

- Vendor disclosure (formerly Form A) or IPG Active Registered Vendor Disclosure (formerly Form B)
- If proposing as a Team, required for all Team members

Firm's Commitment and Signature Form (checklist)

SOITEAM Grid Data

- Required – see Section 3.4.3 instructions for submitting
- Prime and all subs to be entered
- % must equal 100%



SOI SUBMISSION

Exhibits

- All exhibits submitted for this PSB shall be downloaded from the Tollway's website and submitted in PDF format.
- The most current exhibit forms must be used; use of prior versions of exhibits is not allowed and will not be accepted.
- Do not modify the exhibits.

Exhibit A Key Personnel

- Only list those Key Personnel identified in the Item description and include resumes.
- Staff listed must also be shown on Exhibit D.

Exhibit D Availability of Key Personnel

- Intent is to show the actual % of time anticipated to be spent on proposed project.

Professional Services Bulletin 25-1

[PSB 25-1](#)

[Vendor Disclosure \(Formerly Forms A\)](#)

[IPG Active Registered Vendor Disclosure \(Formerly Forms B\)](#)

[Exhibit A Key Personnel](#)

[Exhibit C Current Obligations](#)

Showing 1 to 5 of 12 results

AVOIDING DISQUALIFICATIONS

The following instances are non-curable and will lead to a disqualification

- Late submissions
- Failure to submit the Statement of Interest (SOI)
- Failure to submit Disclosure (DS) **forms** *(Refer to Section 3.5 Disclosures and Certifications)*
 - Vendor Disclosures (formerly Form A)
 - IPG Active Registration Vendor Disclosures (formerly Form B)
 - If proposing as a Team, required for all Team members

****Review 3.4.5 COMMON MISTAKES****



PSB SCHEDULE

1 March 3, 2025 - 4:30 pm | *Last day for Questions*

2 March 14, 2025 - 4:30 pm | *SOI's due, including all required attachments/exhibits*

3 April/May 2025 | *Selection Committee Meeting*

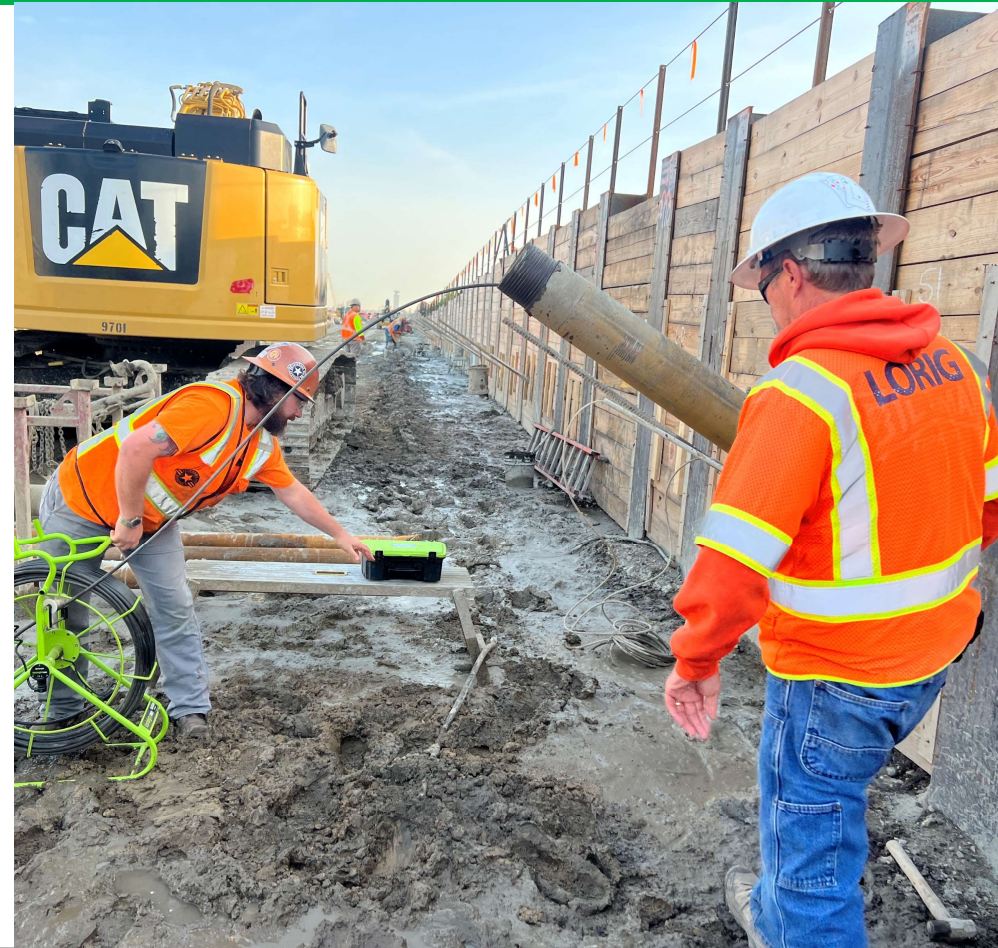
4 June 2025 | *Earliest Estimated Board Approval*

5 August 2025 | *Earliest Estimated Notice to Proceed*

SUBMITTAL OF QUESTIONS

- No questions will be taken during this pre-proposal meeting
- All questions related to this PSB must be submitted electronically through the Trimble Unity Construct SOI mailbox at PSB_25-1.01_Questions_and_RFIs@docs.e-builder.net
- PSB 25-1 Questions are due March 3, 2025, at 4:30 pm (CT)
- Answers will be addressed via addendum published on the Tollway Website and the Illinois eProcurement site: BidBuy

****NOTE – this presentation will be provided via Addendum.***





TOLLWAY COMPLIANCE REQUIREMENTS

TOLLWAY COMPLIANCE REQUIREMENTS

Required DBE/VOSB Forms

Exhibit F: VOSB Utilization Plan and Letter of Intent

Exhibit H: DBE Utilization Plan and Letter of Intent

Important information for both Exhibits:

- Prime Consultants must submit the Letter of Intent for its DBE and VOSB subconsultants including for a self-performing prime
- Please be specific about the scope(s) of work to be performed and associated NAICS/NIGP codes to demonstrate the performance of a commercially useful function

M/W/DBE and VOSB: Current Letter of Certification

Other Forms

DBE and VOSB Forms (if applicable): Good Faith Efforts

VETERAN OWNED/SMALL BUSINESS PROGRAM CERTIFICATIONS

**Veteran Owned Small Business (VOSB) or
Service-Disabled Veteran-Owned Small Business (SDVOSB) Certification**

State of Illinois Commission on Equity and Inclusion (CEI)

- Formerly known as Central Management Services (CMS)

51 percent owned and controlled by a qualified veteran living in Illinois



DBE CERTIFICATIONS

Certification Agencies

Illinois Unified Certification Program (IL UCP):

- Illinois Department of Transportation (IDOT)
- Chicago Transit Authority (CTA)
- Metra
- Pace
- City of Chicago

MBE/WBE Certifications

- City of Chicago
- Cook County

U.S. Small Business Administration, SBA 8(a) Certification





DIVERSITY PROGRAMS

DIVERSITY DEPARTMENT PROGRAMS

Resources for emerging businesses

Partnering for Growth/Reverse Partnering for Growth (P4G) Program

- Encourages prime consultants to assist D/M/WBE firms and veteran-owned small businesses
- Mentor and Protégé work on agreed-upon scope designed to help expand the Protégé's technical capabilities and develop skills needed to work with the Tollway
- Proposed relationships require **Exhibit E** with Statement of Interest



Technical Assistance Program

- Providers can assist with preparation of capabilities statements
- Review Statements of Interest
- Certification and prequalification application assistance
- Relationship building and marketing



PSB 25-1

16 items



ITEM 1: I-25-2000 – Phase II Design Engineering Services

Illinois Route 390 Construction, Lake Street to County Farm Road

Preparation of contract drawings, specifications and project related permits for roadway construction along Illinois Route 390 between Lake Street and County Farm Road.

Scope includes:

- Construction of new Illinois Route 390 Tollway extension to County Farm Road
- Reconstruction of ramps at Illinois Route 390 and Lake Street
- Bridge deck overlay of the Lake Street Bridge over Illinois Route 390
- Traffic signal installation at the new Illinois Route 390/County Farm Road Interchange
- Widening of County Farm Road
- Installation of a shared use path along County Farm Road
- Grading, landscaping, and noise wall improvements
- Installation of a new drainage system and modification of the existing drainage system
- Roadway lighting installation
- Signing and pavement marking improvements
- Erosion and sediment control installation

Design duration anticipated to be approximately 54 months after authorization to proceed inclusive of completion of Phase III support services during construction. Phase II design services are anticipated to be completed approximately 24 months after authorization to proceed.



ITEM 2: I-25-2001 – Phase II Design Engineering Services

Tri-State Tollway (I-294) Bridge Reconstruction from 107th Street to Illinois Route 43 (Harlem Avenue)

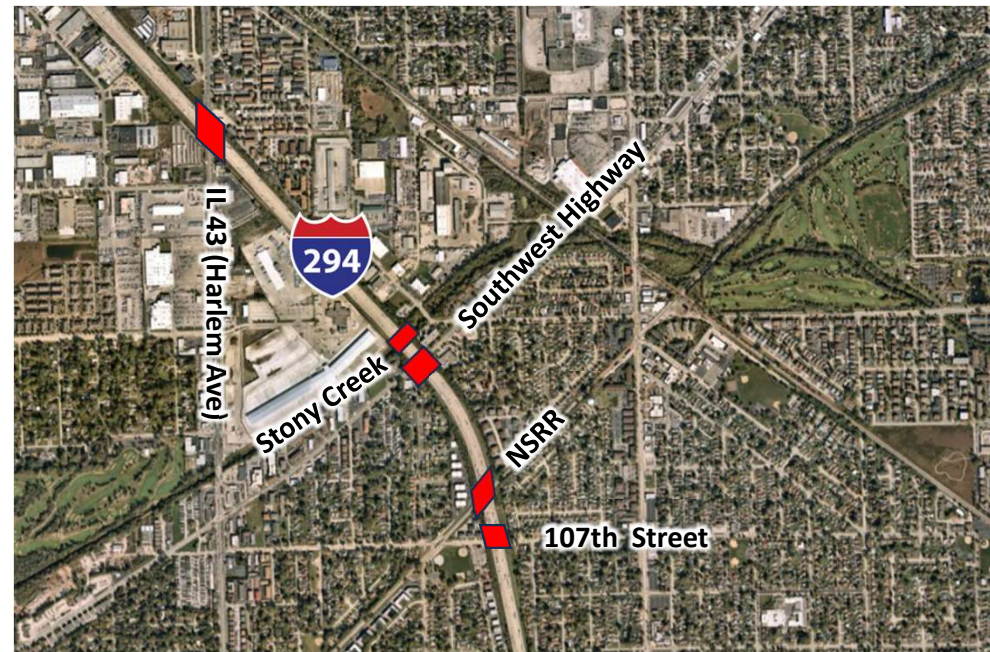
Reconstruction of mainline bridges

- Complete bridge reconstruction from Mile Post 15.6 to Mile Post 16.8
- Coordination with Norfolk Southern Railroad through the Tollway to include submittals as required for railroad review and approval
- Increase vertical clearance where needed
- Local agency design coordination through the Tollway

The following structures are included in this project:

- I-294 over 107th Street (2 structures)
- I-294 over Norfolk Southern Railroad (2 structures)
- I-294 over Southwest Highway (2 structures)
- I-294 over Stony Creek (culvert)
- I-294 over Illinois Route 43 (Harlem Avenue) (2 structures)

Design duration anticipated to be approximately 54 months after authorization to proceed inclusive of completion of Phase III support services during construction. Phase II design services are anticipated to be completed approximately 24 months after authorization to proceed.



Structure Locations

ITEM 3: I-25-2002 - Phase II Design Engineering Services

Tri-State Tollway (I-294) Bridge Reconstruction at Vincennes Road and Chicago Road

Reconstruction of two crossroad bridges over I-294

- Complete bridge reconstruction
- Improvements to increase I-294 horizontal clearance
- Local agency design coordination through the Tollway

The following structures are included in this project:

- Vincennes Road bridge over I-294 at Mile Post 1.6
- Chicago Road bridge over I-294 at Mile Post 1.2

Design duration anticipated to be approximately 36 months after authorization to proceed inclusive of completion of Phase III support services during construction. Phase II design services are anticipated to be completed approximately 18 months after authorization to proceed.



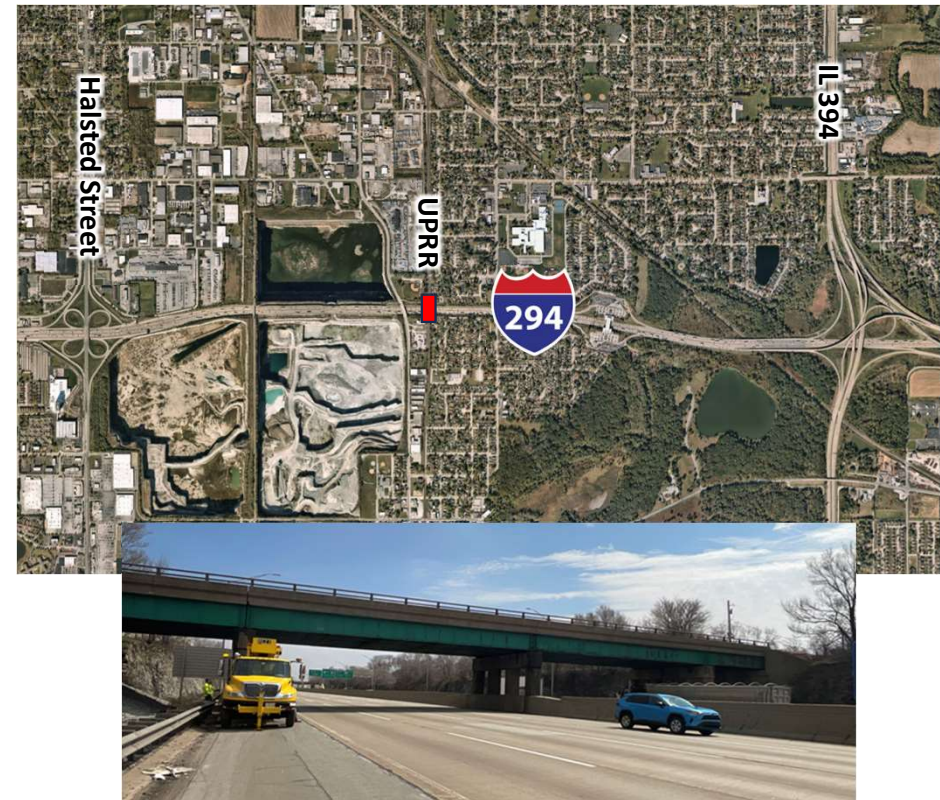
ITEM 4: I-25-2003 - Phase II Design Engineering Services

Tri-State Tollway (I-294) Bridge Reconstruction at Union Pacific Railroad

Reconstruction of UPRR bridge over I-294

- Complete bridge reconstruction
- Improvements to increase I-294 horizontal clearance
- Coordination with Union Pacific Railroad through the Tollway to include submittals as required for railroad review and approval

Design duration anticipated to be approximately 60 months after authorization to proceed inclusive of completion of Phase III support services during construction. Phase II design services are anticipated to be completed approximately 30 months after authorization to proceed.



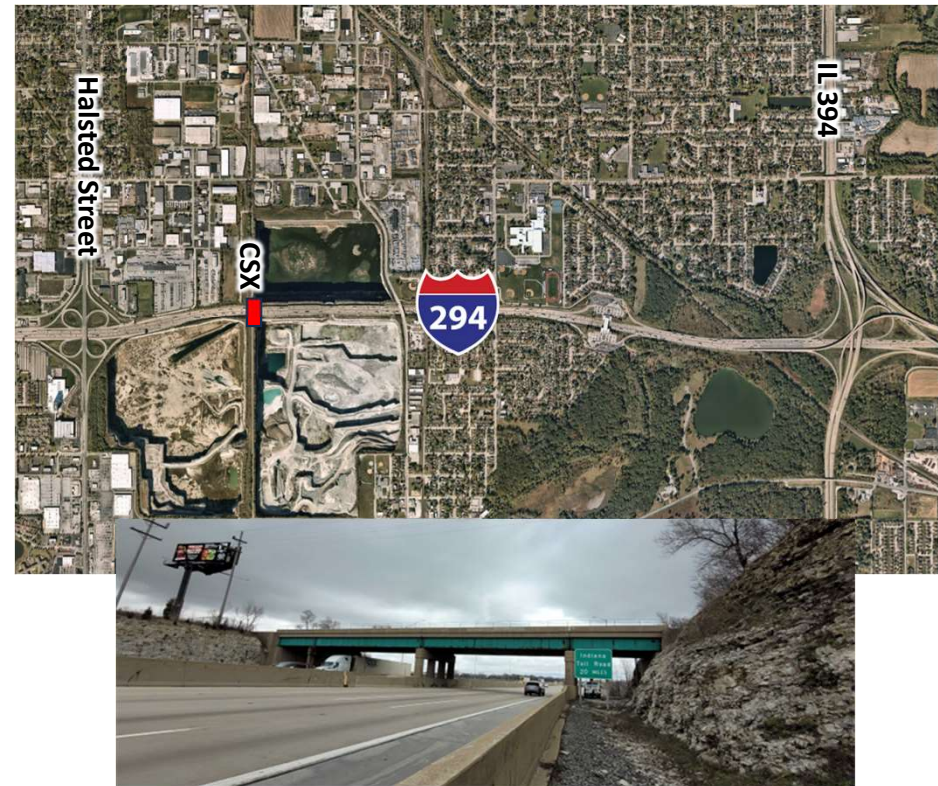
ITEM 5: I-25-2004 - Phase II Design Engineering Services

Tri-State Tollway (I-294) Bridge Reconstruction at CSX Railroad

Reconstruction of CSX railroad bridge over I-294

- Complete bridge reconstruction
- Improvements to increase I-294 horizontal clearance
- Coordination with CSX through the Tollway to include submittals as required for railroad review and approval

Design duration anticipated to be approximately 60 months after authorization to proceed inclusive of completion of Phase III support services during construction. Phase II design services are anticipated to be completed approximately 30 months after authorization to proceed.



ITEM 6: I-25-2005 - Phase II Design Engineering Services

Reagan Memorial Tollway (I-88) Bridge Reconstruction at Canadian National Railway

Reconstruction of CNR bridge over I-88

- Complete bridge reconstruction
- Improvements to increase I-88 horizontal clearance
- Coordination with Canadian National Railway through the Tollway to include submittals as required for railroad review and approval

Design duration anticipated to be approximately 60 months after authorization to proceed inclusive of completion of Phase III support services during construction. Phase II design services are anticipated to be completed approximately 30 months after authorization to proceed.



Structure Location

ITEM 7: I-25-2006 - Phase II Design Engineering Services

Tri-State Tollway (I-94/I-294) Plaza Improvements

Toll Plaza Design Services

Proposed Improvements to include:

- Removing barrier wall b/w lanes & constructing barrier free toll zone(s)
- Removing canopy above lanes & constructing monotube(s) as applicable
- Right sizing facilities to accommodate current/future needs
- Accommodating tolling and traffic while under construction

Potential locations include:

- Plaza 20 at Illinois Route 137 (Buckley Road) along I-94
- Plaza 21 (Waukegan) along I-94
- Plaza 22 at Illinois Route 60 (Town Line Road) along I-94
- Plaza 23 at Illinois Route 22 (Half Day Road) along I-94
- Plaza 27 at Willow Road along I-294

Desired:

- Roadway and tolling knowledge for associated potential improvements
- Knowledge of Business Systems Manual

Design duration anticipated to be approximately 36 months after authorization to proceed inclusive of completion of Phase III support services during construction. Phase II design services are anticipated to be completed approximately 18 months after authorization to proceed.



ITEM 8: I-25-2007 - Phase II Design Engineering Services

Jane Addams Memorial Tollway (I-90) and Reagan Memorial Tollway (I-88) Plaza Improvements

Toll Plaza Design Services

Proposed Improvements to include:

- Removing barrier wall b/w lanes & constructing barrier free toll zone(s)
- Removing canopy above lanes & constructing monotube(s) as applicable
- Right sizing facilities to accommodate current/future needs
- Accommodating tolling and traffic while under construction

Potential locations include:

- Plaza 3 at Genoa Road along I-90
- Plaza 4 at Illinois Route 173 (West Lane Road) along I-90
- Plaza 59 at Farnsworth Avenue along I-88 (eastbound entrance ramp)
- Plaza 65 at Peace Road along I-88
- Plaza 67 at Annie Glidden Road along I-88

Desired:

- Roadway and tolling knowledge for associated potential improvements
- Knowledge of Business Systems Manual

Design duration anticipated to be approximately 36 months after authorization to proceed inclusive of completion of Phase III support services during construction. Phase II design services are anticipated to be completed approximately 18 months after authorization to proceed.



ITEM 9: I-25-2008 - Phase II Design Engineering Services

Reagan Memorial Tollway (I-88) and Veterans Memorial Tollway (I-355) Plaza Improvements

Toll Plaza Design Services

Proposed Improvements to include:

- Removing barrier wall b/w lanes & constructing barrier free toll zone(s)
- Removing canopy above lanes & constructing monotube(s) as applicable
- Right sizing facilities to accommodate current/future needs
- Accommodating tolling and traffic while under construction

Potential locations include:

- Plaza 53 at Spring Road (22nd Street) along I-88
- Plaza 54 at Illinois Route 83 (Kingery Highway) along I-88
- Plaza 55 at Midwest Road along I-88
- Plaza 77 at Illinois Route 38 (Roosevelt Road) along I-355
- Plaza 79 at Illinois Route 56 (Butterfield Road) along I-355
- Plaza 81 at Ogden Avenue (U.S. 34) along I-355 and I-88

Desired:

- Roadway and tolling knowledge for associated potential improvements
- Knowledge of Business Systems Manual

Design duration anticipated to be approximately 36 months after authorization to proceed inclusive of completion of Phase III support services during construction. Phase II design services are anticipated to be completed approximately 18 months after authorization to proceed.



ITEM 10: I-25-2009 - Phase II Design Engineering Services

Veterans Memorial Tollway (I-355) Plaza Improvements

Toll Plaza Design Services

Proposed Improvements to include:

- Removing barrier wall b/w lanes & constructing barrier free toll zone (s)
- Removing canopy above lanes & constructing monotube(s) as applicable
- Right sizing facilities to accommodate current/future needs
- Accommodating tolling and traffic while under construction

Potential locations include:

- Plaza 83 at Maple Avenue along I-355
- Plaza 85 at 63rd Street along I-355
- Plaza 87 at 75th Street along I-355
- Plaza 90 at Boughton Road along I-355
- Plaza 93 at 127th Street along I-355
- Plaza 95 at Archer Avenue (143rd Street) along I-355
- Plaza 97 at Illinois Route 7 (159th Street) along I-355
- Plaza 101 at U.S. 6 (Southwest Highway) along I-355

Desired:

- Roadway and tolling knowledge for associated potential improvements
- Knowledge of Business Systems Manual

Design duration anticipated to be approximately 36 months after authorization to proceed inclusive of completion of Phase III support services during construction. Phase II design services are anticipated to be completed approximately 18 months after authorization to proceed.



ITEM 11: RR-25-2010 - Phase II Design Engineering Services

Jane Addams Memorial Tollway (I-90) Roadway and Bridge Rehabilitation

Preparation of contract drawings, specifications and project related permits for the roadway and bridge rehabilitation on the Jane Addams Memorial Tollway (I-90) from Rockton Road (MP 2.6) to Kishwaukee River (MP 18.3).

Scope includes:

- Mainline asphalt mill and overlay
- Repairs to nine (9) crossroad bridges
- Repairs to eight (8) mainline bridges
- Repairs to one (1) culvert
- Pavement markings

Design duration anticipated to be approximately 36 months after authorization to proceed inclusive of completion of Phase III support services during construction. Phase II design services are anticipated to be completed approximately 18 months after authorization to proceed.



ITEM 12: RR-25-4988 - Design Upon Request

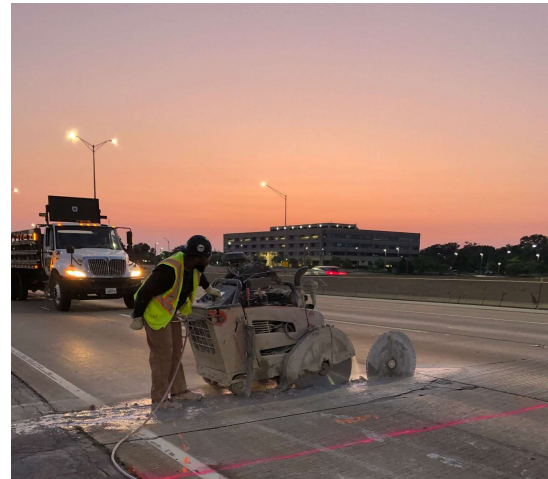
Systemwide Design Services

Task orders under the blanket agreement will be negotiated and authorized by the Tollway on an as-needed basis

Anticipated tasks include:

- Pavement repairs
- Bridge repairs
- Drainage improvements
- On call and as-needed work related to the Tollway System

Upper limit of compensation is \$3,000,000



ITEM 13: I-24-4764 - Construction Management Upon Request

Elgin O'Hare Western Access (I-490) Construction Management Services

Task orders under the blanket agreement will be negotiated and authorized by the Tollway on an as-needed basis

Anticipated tasks include:

- Earthwork construction
- Roadway and bridge construction
- On call and as-needed work related to the Tollway System

Upper limit of compensation is \$5,000,000



ITEM 14: I-25-2011 - Construction Management Upon Request

Tri-State Tollway (I-294) Construction Management Services

Task orders under the blanket agreement will be negotiated and authorized by the Tollway on an as-needed basis

Anticipated tasks include:

- Landscape planting improvements
- Noise abatement wall construction
- On call and as-needed work related to the Tollway System

Upper limit of compensation is \$3,000,000



ITEM 15: I-25-2012 - Construction Management Services

Tri-State Tollway (I-294) ITS Improvements

ITS Improvements from 95th Street to Balmoral Avenue

Scope of work includes:

- Installation of ITS equipment at the IPDC buildings
- ITS equipment cabinets
- Closed Circuit Television Cameras (CCTV)
- Vehicle Detection Systems (VDS)
- Ramp detection
- ITS poles
- Communication and power equipment
- Removal of existing equipment
- Fiber optic cable and switches
- Active Traffic Management (ATM) gantry structures
- Dynamic message signs
- Maintenance of traffic



Anticipate two construction packages with construction starting in late 2025 and substantial completion in 2028

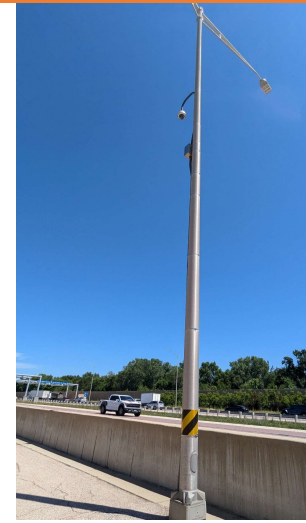
ITEM 16: RR-25-9302 - Construction Management Upon Request

Systemwide ITS Construction Management Services

Task orders under the blanket agreement will be negotiated and authorized by the Tollway on an as-needed basis

- Anticipated tasks include:
 - CCTV camera installation
 - Weigh-in-Motion (WIM) repairs and installation
 - Dynamic Message Sign (DMS) installation
 - On call and as-needed work related to the Tollway System

Upper limit of compensation is \$3,000,000



QUESTIONS

Questions may be sent to:

PSB_25-1.01_Questions_and_RFIs@docs.e-builder.net



THANK YOU FOR
YOUR PARTICIPATION



PSB 25-1 Pre-Proposal Meeting

Attendance:				
Name	First Join	Last Leave	Email	Role
Bennett, Kristen	2/14/25, 9:55:58 AM	2/14/25, 10:52:33 AM	kbennett@getipass.com	kbennett@getipass.com
Campuzano, Maria	2/14/25, 9:59:14 AM	2/14/25, 10:52:35 AM	mcampuzano@getipass.com	mcampuzano@getipass.com
Hall, Danna	2/14/25, 9:59:47 AM	2/14/25, 10:52:37 AM	DHall@getipass.com	DHall@getipass.com
Williamson, Carrie	2/14/25, 10:01:56 AM	2/14/25, 10:52:37 AM	CWilliamson@getipass.com	CWilliamson@getipass.com
ABDUL MOIZ MOHAMMED (External)	2/14/25, 9:20:06 AM	2/14/25, 10:52:37 AM	abdul@hkmeng.com	abdul@hkmeng.com
Hamed Mohammed (External)	2/14/25, 9:41:15 AM	2/14/25, 10:52:37 AM	hmohammed@americanengconsultants.com	hmohammed@americanengconsultants.com
Jeffrey Ehrhart (External)	2/14/25, 9:49:29 AM	2/14/25, 10:52:37 AM	jehrhart@ardmoreroederick.com	jehrhart@ardmoreroederick.com
Perez, Graciela	2/14/25, 9:50:18 AM	2/14/25, 10:52:37 AM	GPerez@getipass.com	GPerez@getipass.com
Tiffany Chen (External)	2/14/25, 9:51:38 AM	2/14/25, 10:52:37 AM	tchen@lineng.com	tchen@lineng.com
Madison Halsne (External)	2/14/25, 9:53:09 AM	2/14/25, 10:52:34 AM	mhalsne@osehinc.com	mhalsne@osehinc.com
FitzPatrick, Megan E. (External)	2/14/25, 9:54:30 AM	2/14/25, 10:52:35 AM	mefitzpatrick@GFNET.com	mefitzpatrick@gfnet.com
Pieniazek, Dave (External)	2/14/25, 9:54:58 AM	2/14/25, 10:52:35 AM	Dave.Pieniazek@stantec.com	dave.pieniazek@stantec.com
Anita States (External)	2/14/25, 9:55:11 AM	2/14/25, 10:52:37 AM	astates@gsg-consultants.com	astates@gsg-consultants.com
Pregmon, Matt (External)	2/14/25, 9:55:14 AM	2/14/25, 10:52:35 AM	Matt.Pregmon@aecom.com	Matt.Pregmon@aecom.com
gordon snyder (Unverified)	2/14/25, 9:55:29 AM	2/14/25, 10:29:12 AM		
Karahalios, Alexander	2/14/25, 9:55:37 AM	2/14/25, 10:52:37 AM	akarahalios@getipass.com	akarahalios@getipass.com
Seagrave, Ann	2/14/25, 9:55:43 AM	2/14/25, 10:52:37 AM	ASeagrave@getipass.com	ASeagrave@getipass.com
Lekan Ogedengbe (SDI) (Unverified)	2/14/25, 9:55:44 AM	2/14/25, 10:52:37 AM		
Merrill, Tiffany	2/14/25, 9:55:47 AM	2/14/25, 10:52:37 AM	TMerrill@getipass.com	TMerrill@getipass.com
Williams, Cynthia	2/14/25, 9:55:54 AM	2/14/25, 10:52:37 AM	CMWilliams@getipass.com	CMWilliams@getipass.com
Robinson, James (External)	2/14/25, 9:55:59 AM	2/14/25, 10:52:36 AM	jrobinson@burnsmcd.com	jrobinson@burnsmcd.com
Mohsen Farahany	2/14/25, 9:56:04 AM	2/14/25, 10:52:36 AM	MFarahany@RME-i.com	MFarahany@RME-i.com
Greg Stukel (External)	2/14/25, 9:56:24 AM	2/14/25, 10:52:12 AM	gstukel@bowman.com	gstukel@bowmanconsulting.com
Drozd, Laura	2/14/25, 9:56:35 AM	2/14/25, 10:52:37 AM	LDrozd@getipass.com	LDrozd@getipass.com
Janet Wackrow (External)	2/14/25, 9:56:39 AM	2/14/25, 10:52:25 AM	jwackrow@rmchin.com	jwackrow@rmchin.com
Catherine Carpenter (External)	2/14/25, 9:56:45 AM	2/14/25, 10:52:36 AM	Catherine.Carpenter@oneatlas.com	Catherine.Carpenter@oneatlas.com
Valentino, Michael	2/14/25, 9:56:58 AM	2/14/25, 10:52:16 AM	MValentino@getipass.com	MValentino@getipass.com
Kathy Louder (External)	2/14/25, 9:57:18 AM	2/14/25, 10:52:35 AM	klouder@collinsengr.com	KLouder@collinsengr.com
Regan, Ilana (External)	2/14/25, 9:57:34 AM	2/14/25, 10:52:37 AM	Ilana.Regan@mbakerintl.com	Ilana.Regan@mbakerintl.com
Spencer, Takesha	2/14/25, 9:57:35 AM	2/14/25, 10:52:37 AM	TSpencer@getipass.com	TSpencer@getipass.com
Fitzpatrick, Brian (External)	2/14/25, 9:57:35 AM	2/14/25, 10:52:37 AM	bfitzpatrick@burnsmcd.com	bfitzpatrick@burnsmcd.com
Brian McGowan (External)	2/14/25, 9:57:41 AM	2/14/25, 10:46:34 AM	Brian.McGowan@oneatlas.com	Brian.McGowan@oneatlas.com
Harrington, Jennifer (External)	2/14/25, 9:57:44 AM	2/14/25, 10:52:34 AM	jharrington@f-w.com	jharrington@f-w.com
Myers, Linda	2/14/25, 9:57:50 AM	2/14/25, 10:52:37 AM	LMyers@getipass.com	LMyers@getipass.com
sainath Reddivari (External)	2/14/25, 9:57:54 AM	2/14/25, 10:52:25 AM	sainath@lseeng.onmicrosoft.com	sainath@lseeng.onmicrosoft.com
Maxwell Barry	2/14/25, 9:57:59 AM	2/14/25, 10:52:37 AM	mbarry@statetestingllc.com	mbarry@statetestingllc.com
Schumacher, Luke (External)	2/14/25, 9:58:13 AM	2/14/25, 10:52:35 AM	lschumacher@burnsmcd.com	lschumacher@burnsmcd.com

Javier Romero	2/14/25, 9:58:17 AM	2/14/25, 10:52:37 AM	JRomero@RME-i.com	JRomero@RME-i.com
Michael Brouch (External)	2/14/25, 9:58:21 AM	2/14/25, 10:52:37 AM	mbrouch@ardmoreroederick.com	mbrouch@ardmoreroederick.com
Robert Mains (External)	2/14/25, 9:58:46 AM	2/14/25, 10:52:37 AM	rmains@cckleng.com	rmains@cckleng.com
Chris Pieper (Unverified)	2/14/25, 9:58:52 AM	2/14/25, 10:52:36 AM		
Tetreault-Folmsbee, Aubrey	2/14/25, 9:58:54 AM	2/14/25, 10:52:36 AM	Aubrey.Tetreault-Folmsbee@stvinc.com	Aubrey.Tetreault-Folmsbee@stvinc.com
Clarisa Krafft (External)	2/14/25, 9:58:58 AM	2/14/25, 10:52:37 AM	ckrafft@gsg-consultants.com	ckrafft@gsg-consultants.com
Michael Booth (External)	2/14/25, 9:58:58 AM	2/14/25, 10:52:37 AM	Michael.Booth@railpros.com	Michael.Booth@railpros.com
Jonathan R. Vana, P.E. (External)	2/14/25, 9:58:59 AM	2/14/25, 10:14:00 AM	JVana@civiltechinc.com	jvana@civiltechinc.com
Nataliy Spivak (External)	2/14/25, 9:59:01 AM	2/14/25, 10:52:37 AM	nspivak@collinsengr.com	nspivak@collinsengr.com
Athreya Sreenivasan (External)	2/14/25, 9:59:09 AM	2/14/25, 10:52:36 AM	ASreenivasan@parametrix.com	ASreenivasan@parametrix.com
Hemal Patel (External)	2/14/25, 9:59:15 AM	2/14/25, 10:52:37 AM	hemal.patel@10-4eng.com	hemal.patel@10-4eng.com
Erin Lattyak	2/14/25, 9:59:21 AM	2/14/25, 10:52:37 AM	Erin.Lattyak@exp.com	erin.lattyak@exp.com
Zeman, Benjamin	2/14/25, 9:59:31 AM	2/14/25, 10:52:37 AM	Benjamin.Zeman@hdrinc.com	bzeman@hdrinc.com
16302860624	2/14/25, 9:59:33 AM	2/14/25, 10:52:37 AM		
Lukowski, John (External)	2/14/25, 9:59:35 AM	2/14/25, 10:52:37 AM	jlukowski@burnsmcd.com	jlukowski@burnsmcd.com
Smith, Ryan	2/14/25, 9:59:39 AM	2/14/25, 10:52:34 AM	Ryan.Smith@strand.com	Ryan.Smith@strand.com
Redding, Ben	2/14/25, 9:59:40 AM	2/14/25, 10:28:37 AM	Ben.Redding@kimley-horn.com	Ben.Redding@kimley-horn.com
Michael DUMAS (External)	2/14/25, 9:59:46 AM	2/14/25, 10:52:37 AM	michael.dumas@rina.org	MD024@rina.org
Jennifer Koch-Murphy	2/14/25, 9:59:47 AM	2/14/25, 10:52:37 AM	jkochmurphy@se3.us	jkochmurphy@se3.us
Krok, Marcin (External)	2/14/25, 9:59:50 AM	2/14/25, 10:52:37 AM	Marcin.Krok@rsandh.com	Marcin.Krok@rsandh.com
Kutska, Mary Lou (External)	2/14/25, 9:59:55 AM	2/14/25, 10:06:39 AM	MaryLou.Kutska@mbakerintl.com	MaryLou.Kutska@mbakerintl.com
Scott VanDerAa (External)	2/14/25, 9:59:57 AM	2/14/25, 10:52:37 AM	SVanderAa@cerasolutions.com	SVanderAa@cerasolutions.com
Nihar Shah	2/14/25, 10:00:06 AM	2/14/25, 10:18:12 AM	NShah@RME-i.com	NShah@RME-i.com
Mozwecz, Jaclyn (External)	2/14/25, 10:00:09 AM	2/14/25, 10:52:12 AM	jmozwecz@valdeseng.com	jmozwecz@valdeseng.com
Rafael Herrera	2/14/25, 10:00:12 AM	2/14/25, 10:52:37 AM	rherrera@se3.us	rherrera@se3.us
Shuja S. Kazi (External)	2/14/25, 10:00:13 AM	2/14/25, 10:52:37 AM	shujak@deg-america.com	shujak@deg-america.com
Tom (Unverified)	2/14/25, 10:00:13 AM	2/14/25, 10:52:37 AM		
Carolyn Valentino (External)	2/14/25, 10:00:16 AM	2/14/25, 10:24:07 AM	cvalentino@bowman.com	cvalentino@bowmanconsulting.com
Yun Kim (External)	2/14/25, 10:00:24 AM	2/14/25, 10:52:37 AM	ykim@ardmoreroederick.com	ykim@ardmoreroederick.com
Kelly, Sherita	2/14/25, 10:00:26 AM	2/14/25, 10:52:12 AM	skelly@getipass.com	skelly@getipass.com
Mae (Unverified)	2/14/25, 10:00:29 AM	2/14/25, 10:52:37 AM		
Paul Gregoire	2/14/25, 10:00:30 AM	2/14/25, 10:52:11 AM	paul.gregoire@gec-group.com	paul.gregoire@gec-group.com
Wilcox, David	2/14/25, 10:00:32 AM	2/14/25, 10:52:37 AM	David.Wilcox@stvinc.com	David.Wilcox@stvinc.com
Jennifer Drake (External)	2/14/25, 10:00:35 AM	2/14/25, 10:52:37 AM	Jennifer.Drake@railpros.com	Jennifer.Drake@railpros.com
Pozzessere, Kari (External)	2/14/25, 10:00:44 AM	2/14/25, 10:52:37 AM	Kari.Pozzessere@aecom.com	Kari.Pozzessere@aecom.com
Jocelyn Wong (External)	2/14/25, 10:00:45 AM	2/14/25, 10:52:36 AM	jwong@cckleng.com	jwong@cckleng.com
Carlos Acevedo (External)	2/14/25, 10:00:45 AM	2/14/25, 10:52:37 AM	carlos.acevedo@railpros.com	carlos.acevedo@railpros.com
Gibbons, Dylan (External)	2/14/25, 10:00:46 AM	2/14/25, 10:52:36 AM	Dylan.Gibbons@rsandh.com	Dylan.Gibbons@rsandh.com
Mohammed Rashed (External)	2/14/25, 10:00:50 AM	2/14/25, 10:52:37 AM	Mohammed.Rashed@oneatlas.com	Mohammed.Rashed@oneatlas.com
John Yonan (External)	2/14/25, 10:00:50 AM	2/14/25, 10:52:37 AM	jyonan@collinsengr.com	jyonan@collinsengr.com
Kenneth Clay (External)	2/14/25, 10:00:51 AM	2/14/25, 10:52:37 AM	kclay@cckleng.com	kclay@cckleng.com
Shwetha Muralitharan (Unverified)	2/14/25, 10:01:12 AM	2/14/25, 10:52:37 AM		
Press, Stephanie (External)	2/14/25, 10:01:13 AM	2/14/25, 10:52:36 AM	Stephanie.Press@rsandh.com	Stephanie.Press@rsandh.com

Hukic-Hamzic, Emina	2/14/25, 10:01:27 AM	2/14/25, 10:52:37 AM	EHukic-Hamzic@getipass.com	EHukic-Hamzic@getipass.com
Perla Castro	2/14/25, 10:01:29 AM	2/14/25, 10:36:04 AM		
Kujawa, Dawn (External)	2/14/25, 10:01:30 AM	2/14/25, 10:52:35 AM	Dawn.Kujawa@mbakerintl.com	Dawn.Kujawa@mbakerintl.com
Greg Osborne (External)	2/14/25, 10:01:31 AM	2/14/25, 10:52:37 AM	gosborne@epsteinglobal.com	gosborne@epsteinglobal.com
Jason Martin	2/14/25, 10:01:38 AM	2/14/25, 10:52:36 AM	jmartin@se3.us	jmartin@se3.us
Weiss, Marla (External)	2/14/25, 10:01:39 AM	2/14/25, 10:52:36 AM	Marla.Weiss@stantec.com	Marla.Weiss@stantec.com
13124688769	2/14/25, 10:01:44 AM	2/14/25, 10:52:37 AM		
Peter Stephenson (External)	2/14/25, 10:01:48 AM	2/14/25, 10:52:37 AM	peter.stephenson@innleadair.com	peter.stephenson@innleadair.com
Sonar, Sagar	2/14/25, 10:01:48 AM	2/14/25, 10:52:36 AM	Sagar.Sonar@kimley-horn.com	Sagar.Sonar@kimley-horn.com
Gines, Gustavo (External)	2/14/25, 10:01:53 AM	2/14/25, 10:52:37 AM	Gustavo.Gines@rsandh.com	Gustavo.Gines@rsandh.com
Oscar Coronado (External)	2/14/25, 10:01:53 AM	2/14/25, 10:52:35 AM	ocoronado@cerasolutions.com	ocoronado@cerasolutions.com
Michelle Egner (Unverified)	2/14/25, 10:01:57 AM	2/14/25, 10:52:36 AM		
Jordan Pettibone (External)	2/14/25, 10:02:00 AM	2/14/25, 10:52:34 AM	Jordan.Pettibone@lochgroup.com	Jordan.Pettibone@lochgroup.com
16302975413	2/14/25, 10:02:23 AM	2/14/25, 10:52:37 AM		
Reed, Wayne (External)	2/14/25, 10:02:24 AM	2/14/25, 10:51:12 AM	Wayne.Reed@atkinsrealis.com	Wayne.Reed@atkinsrealis.com
Jean-Pierre @ AGANO ZURI (Unverified)	2/14/25, 10:02:37 AM	2/14/25, 10:52:37 AM		
Vinod Patel (External)	2/14/25, 10:02:41 AM	2/14/25, 10:52:18 AM	vinod.patel@10-4eng.com	vinod.patel@10-4eng.com
Banda, Vincent	2/14/25, 10:03:00 AM	2/14/25, 10:52:37 AM	VBanda@getipass.com	VBanda@getipass.com
Mary Ellen Mack (External)	2/14/25, 10:03:07 AM	2/14/25, 10:52:37 AM	MMack@primeraeng.com	MMack@primeraeng.com
Margaret Henriksen (External)	2/14/25, 10:03:16 AM	2/14/25, 10:52:37 AM	mhenriksen@lseeng.onmicrosoft.com	mhenriksen@lseeng.onmicrosoft.com
Adam O'Holleran (External)	2/14/25, 10:03:23 AM	2/14/25, 10:52:35 AM	aoholleran@gocos.net	aoholleran@gocos.net
PMCS (Unverified)	2/14/25, 10:03:54 AM	2/14/25, 10:52:37 AM		
Kucharski, Adam	2/14/25, 10:04:12 AM	2/14/25, 10:49:03 AM	Adam.Kucharski@kimley-horn.com	Adam.Kucharski@kimley-horn.com
Ryan Gall (External)	2/14/25, 10:04:29 AM	2/14/25, 10:52:37 AM	rgall@collinsengr.com	rgall@collinsengr.com
Jason Schneider (External)	2/14/25, 10:05:23 AM	2/14/25, 10:52:37 AM	jschneider@collinsengr.com	JSchneider@collinsengr.com
Ray Arias (Unverified)	2/14/25, 10:05:23 AM	2/14/25, 10:52:29 AM		
Helander, Erin (External)	2/14/25, 10:05:37 AM	2/14/25, 10:52:37 AM	ehelander@burnsmcd.com	ehelander@burnsmcd.com
Al Lapinskas (External)	2/14/25, 10:05:46 AM	2/14/25, 10:52:34 AM	Alius.Lapinskas@clarkdietz.com	alius.lapinskas@clarkdietz.com
Nutter, James (Unverified)	2/14/25, 10:05:50 AM	2/14/25, 10:52:37 AM		
Durkin, Laura	2/14/25, 10:06:15 AM	2/14/25, 10:52:37 AM	LDurkin@getipass.com	LDurkin@getipass.com
Heather Stephens	2/14/25, 10:10:37 AM	2/14/25, 10:52:37 AM	hstephens@statetestingllc.com	hstephens@statetestingllc.com
Fleming, Aislinn E. (External)	2/14/25, 10:10:46 AM	2/14/25, 10:52:37 AM	aifleming@GFNET.com	aifleming@gfnet.com
Moussa A. Issa (External)	2/14/25, 10:11:40 AM	2/14/25, 10:52:37 AM	moussa.issa@hbmeng.com	moussa.issa@hbmeng.com
Mondel, Jim	2/14/25, 10:15:25 AM	2/14/25, 10:52:37 AM	JMondel@getipass.com	JMondel@getipass.com
Krista Thoennes (External)	2/14/25, 10:22:48 AM	2/14/25, 10:52:34 AM	KThoennes@infrastructure-eng.com	KThoennes@infrastructure-eng.com
Chester F. Kochan (External)	2/14/25, 10:23:32 AM	2/14/25, 10:52:37 AM	Chester.Kochan@clarkdietz.com	chester.kochan@clarkdietz.com
Liam @ UKA (Unverified)	2/14/25, 10:24:55 AM	2/14/25, 10:52:37 AM		
Haleema Begum (Unverified)	2/14/25, 10:28:00 AM	2/14/25, 10:52:37 AM		
Schock, Tim [US-US]	2/14/25, 10:30:47 AM	2/14/25, 10:52:37 AM	Tim.Schock@parsons.com	Tim.Schock@Parsons.com
Jake Behnke	2/14/25, 10:35:28 AM	2/14/25, 10:52:37 AM	jakebehnke@statetestingllc.com	jakebehnke@statetestingllc.com