



ILLINOIS TOLLWAY NEWS

FOR IMMEDIATE RELEASE
November 14, 2024

**TRAFFIC SHIFTS SCHEDULED FOR WINTER TRAVEL CONFIGURATION
ON THE CENTRAL TRI-STATE TOLLWAY (I-294) BETWEEN I-55 AND CERMAK ROAD**
New traffic pattern scheduled for traffic traveling from southbound I-294 to I-55

The Illinois Tollway is scheduled to begin shifting traffic into winter configuration this week on the Central Tri-State Tollway (I-294) Project between I-55 and Cermak Road to accommodate the continuation of construction work as weather allows. In addition, as part of the new traffic configuration, access to the southbound I-294 ramp to both directions of I-55 will move more a half mile to the north and two lanes of traffic will be restored on the ramp.

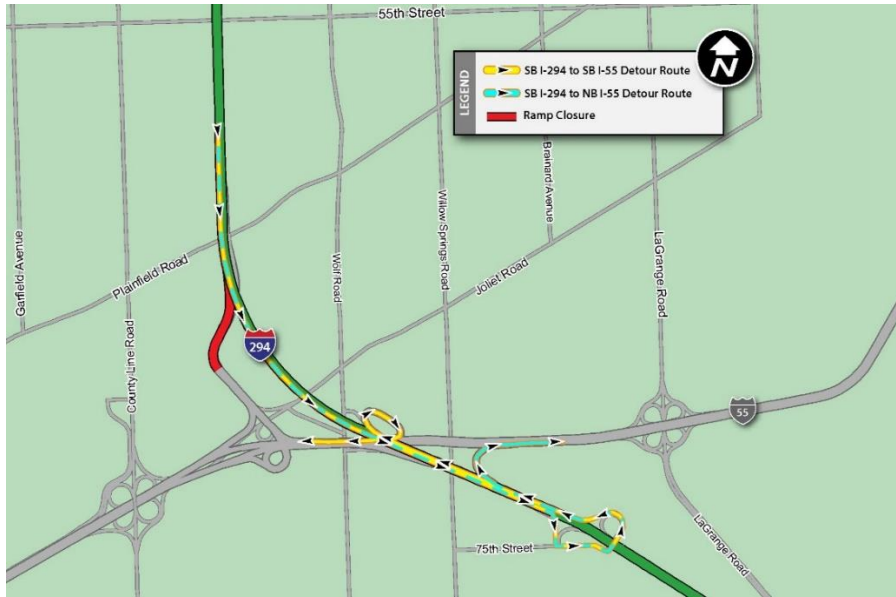
Work to prepare for traffic shifts will require lane closures and an overnight full closure and detour of the ramp connecting southbound I-294 to I-55.

Overnight Friday, November 15, the ramp connecting southbound I-294 to both northbound and southbound I-55 is scheduled to close with a posted detour beginning at midnight and continuing until 7 a.m. Saturday, November 16. Up to two southbound lanes on I-294 are also scheduled to close during the ramp detour.

During the ramp closure, traffic will be detoured to the 75th Street Interchange and routed to northbound I-294 in order to access either northbound or southbound I-55. No tolls will be taken at the 75th Street Toll Plazas in either direction for customers following the detour route.

Additional ramp lane closures may be needed during the week of November 18 to complete the shift into the winter configuration.

Construction and electronic message signs will be in place in advance to alert drivers to the overnight lane closures and traffic shifts. Up-to-date closure information will be available on the Illinois Tollway's [Daily Construction Alert](#). All work is weather dependent.



In late November, additional traffic shifts are scheduled on southbound I-294 between 47th Street and the Burlington Northern Santa Fe Railroad and at 55th Street. In addition, at the Hinsdale Oasis, access to the ramp from southbound I-294 will be move to north of 55th Street.

Once the traffic shifts are complete, four lanes of traffic will be available on southbound I-294 from I-55 to Ogden Avenue, and between Ogden Avenue and Cermak Road, one left lane will remain in counterflow configuration on the northbound side with other three right lanes in their regular configuration on the southbound side.

Traffic on northbound I-294 between I-55 and Cermak Road will remain in its current configuration through winter.

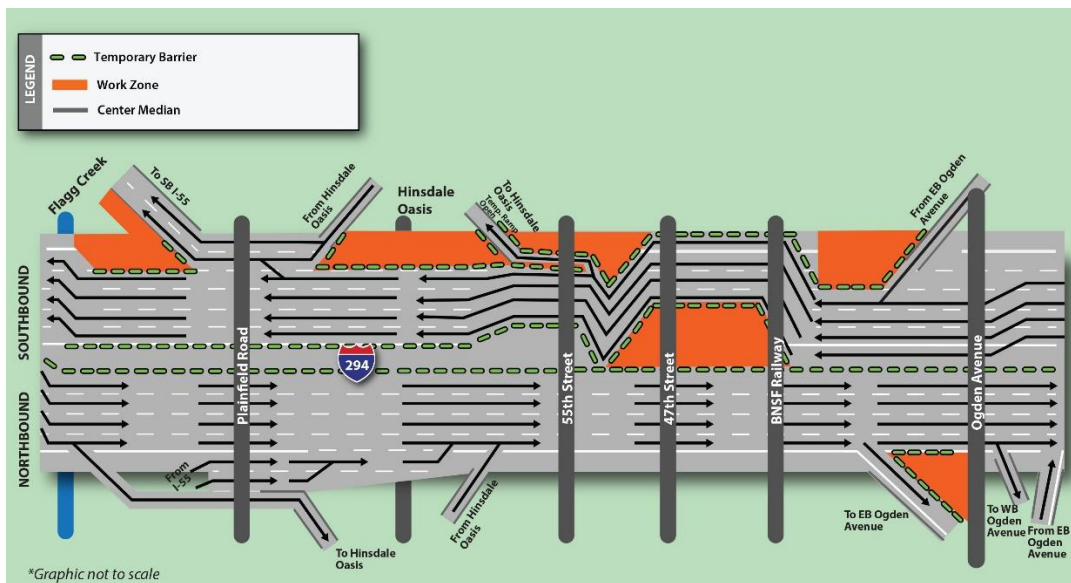
Traffic on I-294 is scheduled to remain in this configuration until spring 2025, with additional off-peak and overnight closures scheduled as needed. During the winter, construction will include roadway, ramp and bridge reconstruction as weather allows.

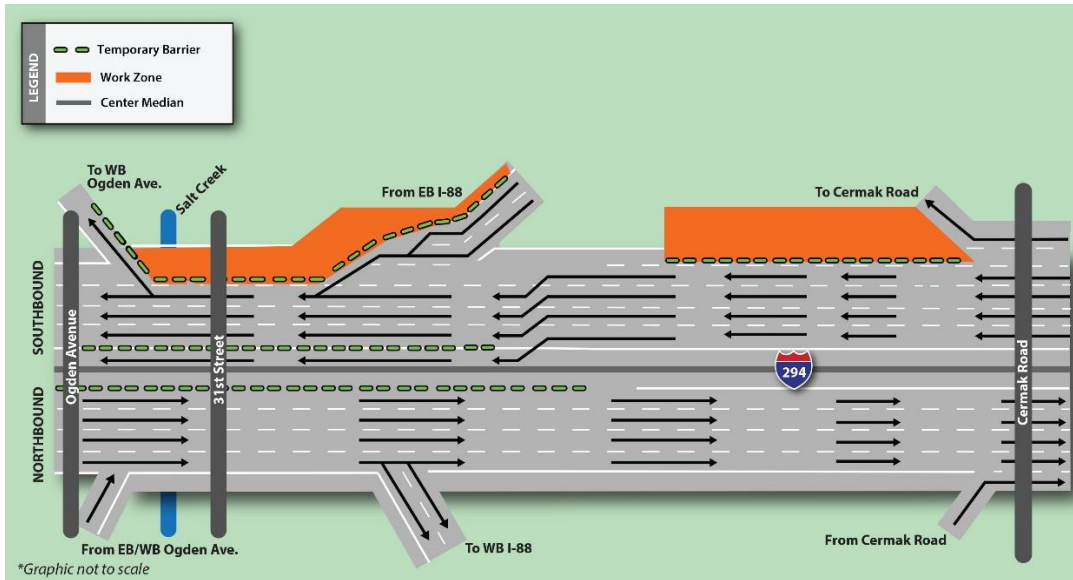
Mainline construction between St. Charles Road and I-55 is currently scheduled to continue through 2026. The Tollway is rebuilding the roadway with widening up to six lanes in both directions in some areas, delivering new SmartRoad infrastructure, as well as deliver reconstructed shoulders to accommodate Flex Lanes.

Construction in this area is being coordinated with the Illinois Department of Transportation, Cook County Department of Transportation and Highways, Village of Western Springs, Village of Indian Head Park, Village of Hinsdale, Village of Oak Brook, Village of Burr Ridge as well as local fire and police departments.

Information including maps and construction updates is available on the Tollway’s website at www.illinoistollway.com in the Projects section.

The \$4 billion Central Tri-State Tollway (I-294) Project is reconstructing and widening the roadway between Balmoral Avenue and 95th Street to provide congestion relief, update old infrastructure to meet current and future transportation demand and address regional needs. This work is part of the Tollway’s *Move Illinois* Program. More than 220,000 vehicles use the Central Tri-State Tollway daily.





Work Zone Safety

Construction zone speed limits are in effect in all construction zones 24/7 and drivers should continue to watch for changing traffic patterns and use caution, especially when workers are present. On I-294, a 45 mph work zone speed limit is in effect throughout the construction season.

The Illinois Tollway reminds motorists that the “Move Over Law” requires motorists to change lanes or to slow down and proceed with caution when passing any vehicle on the side of the road with hazard lights activated. If you see flashing lights ahead, please move over or slow down.

Illinois State Police have zero tolerance for drivers speeding in work zones or failure to comply with the Move Over Law. The minimum penalty for speeding in a work zone is \$250 with up to a \$25,000 fine and a 14-year jail sentence for hitting a roadway worker. Penalties for failure to slow down or move over for a vehicle on the shoulder with flashing lights includes up to a \$10,000 fine, 2-year suspension of driving privileges and jail time, in extreme cases.

About Move Illinois

The Illinois Tollway’s 16-year, \$15 billion capital program, *Move Illinois: The Illinois Tollway Driving the Future*, is improving mobility, relieving congestion, reducing pollution, creating as many as 165,220 jobs and linking economies throughout the region. The first 12 years of *Move Illinois* are on schedule and within budget, delivering the new Illinois Route 390 Tollway and a rebuilt and widened Jane Addams Memorial Tollway (I-90) with its new SmartRoad corridor, as well as opening a new interchange connecting the Tri-State Tollway (I-294) to I-57. Progress continues on projects addressing the remaining needs of the existing Tollway system, delivering the new I-490 Tollway Project and reconstruction of the Central Tri-State Tollway (I-294).

About the Illinois Tollway

The Illinois Tollway is a user-fee system that receives no state or federal funds for maintenance and operations. The agency maintains and operates 294 miles of roadways in 12 counties in Northern Illinois, including the Reagan Memorial Tollway (I-88), the Veterans Memorial Tollway (I-355), the Jane Addams Memorial Tollway (I-90), the Tri-State Tollway (I-94/I-294/I-80) and the Illinois Route 390 Tollway.

