



ILLINOIS TOLLWAY NEWS

FOR IMMEDIATE RELEASE
August 21, 2023

LANE REDUCTION SCHEDULED ON RAMP FROM NORTHBOUND TRI-STATE TOLLWAY (I-294) TO WESTBOUND REAGAN MEMORIAL TOLLWAY (I-88)

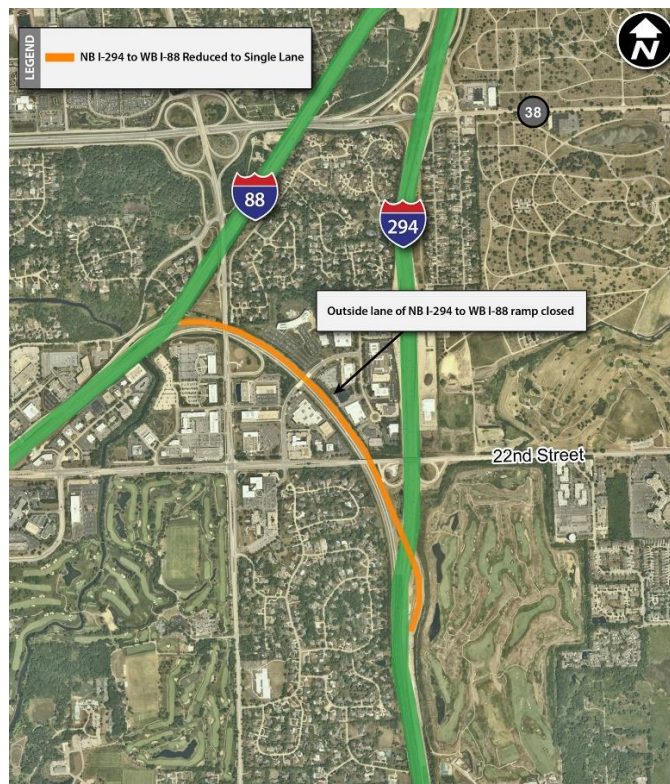
Traffic will be limited to a single lane through fall; delays are expected

DOWNERS GROVE, IL – Beginning this week, the ramp connecting the northbound Tri-State Tollway (I-294) to the westbound Reagan Memorial Tollway (I-88) will be reduced from two lanes to a single lane through fall as work continues on the Central Tri-State Tollway (I-294) Project. Delays are expected.

Construction and electronic message signs will be in place in advance to alert drivers to the ramp lane closure. Up-to-date closure information will be available on the Illinois Tollway's [Daily Construction Alert](#). All work is weather dependent.

The ramp lane closure is needed to provide a safe work zone for workers and to accommodate traffic while work is underway to reconstruct the ramp connecting northbound I-294 to westbound I-88.

Overnight on Thursday, August 24, the ramp connecting northbound I-294 to westbound I-88 will be reduced to a single lane through fall. On northbound I-294, four lanes of traffic will remain open to traffic with only one lane exiting to westbound I-88.



Construction in this area is being coordinated with the Illinois Department of Transportation, Village of Oak Brook, as well as local fire and police departments.

Construction updates, project information, maps and detour information for work that is part of the Central Tri-State Tollway (I-294) Project is available in the Projects section on the Tollway's website at www.illinoistollway.com.

The \$4 billion Central Tri-State Tollway (I-294) Project is reconstructing and widening the roadway between Balmoral Avenue and 95th Street to provide congestion relief, update old infrastructure to meet current and future transportation demand and address regional needs. This work is part of the Tollway's 15-year, \$14 billion capital program, *Move Illinois: The Illinois Tollway Driving the Future*. More than 220,000 vehicles use the Central Tri-State Tollway daily.

Work Zone Safety

Construction zone speed limits are in effect in all construction zones 24/7 and drivers should continue to watch for changing traffic patterns and use caution, especially when workers are present. On I-294, a 45 mph work zone speed limit is in effect throughout the construction season.

The Illinois Tollway reminds motorists that the "Move Over Law" requires motorists to change lanes or to slow down and proceed with caution when passing any vehicle on the side of the road with hazard lights activated. If you see flashing lights ahead, please move over or slow down. On I-294, a 45 mph work zone speed limit is in effect throughout the construction season.

Illinois State Police have zero tolerance for drivers speeding in work zones or failure to comply with the Move Over Law. The minimum penalty for speeding in a work zone is \$250 with up to a \$25,000 fine and a 14-year jail sentence for hitting a roadway worker. Penalties for failure to slow down or move over for a vehicle on the shoulder with flashing lights includes up to a \$10,000 fine, 2-year suspension of driving privileges and jail time, in extreme cases.

About Move Illinois

The Illinois Tollway's 15-year, \$14 billion capital program, *Move Illinois: The Illinois Tollway Driving the Future*, is improving mobility, relieving congestion, reducing pollution, creating as many as 152,000 jobs and linking economies throughout the region. The first 11 years of *Move Illinois* are on schedule and within budget, delivering the rebuilt and widened Jane Addams Memorial Tollway (I-90) as a state-of-the-art 21st century corridor and opening a new interchange connecting the Tri-State Tollway (I-294) to I-57. Progress continues on projects addressing the remaining needs of the existing Tollway system, delivering the Elgin O'Hare Western Access Project and reconstruction of the Central Tri-State Tollway (I-294).

About the Illinois Tollway

The Illinois Tollway is a user-fee system that receives no state or federal funds for maintenance and operations. The agency maintains and operates 294 miles of roadways in 12 counties in Northern Illinois, including the Reagan Memorial Tollway (I-88), the Veterans Memorial Tollway (I-355), the Jane Addams Memorial Tollway (I-90), the Tri-State Tollway (I-94/I-294/I-80) and the Illinois Route 390 Tollway.

###