



ILLINOIS TOLLWAY NEWS

FOR IMMEDIATE RELEASE
February 3, 2023

**TRAFFIC SHIFT SCHEDULED NEXT WEEK ON NORTHBOUND TRI-STATE TOLLWAY (I-294)
INCLUDING REOPENING RAMPS TO SOUTHBOUND I-55 AND WOLF ROAD**

Overnight lane closures needed on I-55 and I-294

DOWNERS GROVE, IL – Overnight lane closures are scheduled next week to shift traffic on I-55 and on the northbound Tri-State Tollway (I-294) between Willow Springs Road and Plainfield Road and reopen the ramp connecting northbound I-294 to southbound I-55 and Wolf Road.

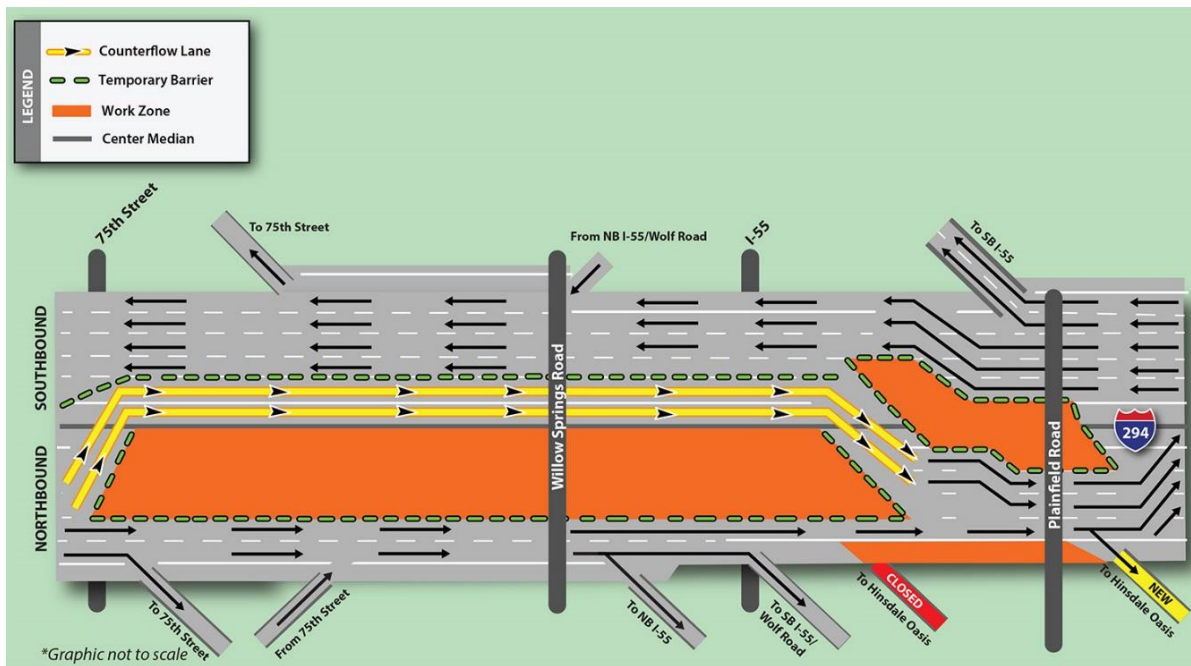
Electronic message and construction signage will be put in place in advance to alert drivers to the lane closures. The closures are needed to provide a safe work zone and will be scheduled during overnight hours to reduce the impact on local traffic. Up-to-date closure information will be available on the Illinois Tollway's [Daily Construction Alert](#). All work is weather dependent.

On Monday, February 6, beginning at 9 p.m. and continuing until 5 a.m. on Tuesday, February 7, lane closures are scheduled on southbound I-55 with traffic to be reduced to a single lane at times for work to prepare for ramp reopenings.

On Thursday, February 9, beginning at 9 p.m. and continuing until 5 a.m., Friday, February 10, traffic on northbound I-294 will be reduced to two lanes over I-55 to complete traffic shifts. Access to northbound I-55 from I-294 will remain open.

When the traffic shift is complete, three lanes of traffic on northbound I-294 will be available between Willow Springs Road and Plainfield Road with the right lane shifted onto the new northbound pavement and two lanes remaining on the southbound side of the tollway in a counterflow configuration to provide for a work zone in the middle for pavement work.

In addition, the ramps connecting northbound I-294 to southbound I-55 and to Wolf Road are scheduled to reopen. The ramps have been closed and detoured since April 2022.



Traffic is anticipated to remain in this configuration until late February/early March. Then, as construction allows, northbound I-294 traffic between 75th Street and Willow Springs Road is scheduled to shift again with three lanes traveling on the northbound side and one lane remaining in counterflow on the southbound side.

Information about the Central Tri-State Tollway (I-294) Project is available in the Projects section on the Tollway's website at www.illinoistollway.com.

The \$4 billion Central Tri-State Tollway (I-294) Project is reconstructing and widening the roadway between Balmoral Avenue and 95th Street to provide congestion relief, update old infrastructure to meet current and future transportation demand and address regional needs. This work is part of the Tollway's 15-year, \$14 billion capital program, Move Illinois: The Illinois Tollway Driving the Future. More than 220,000 vehicles use the Central Tri-State Tollway daily.

Work Zone Safety

Construction zone speed limits are in effect in all construction zones 24/7 and drivers should continue to watch for changing traffic patterns and use caution, especially when workers are present. On Wolf Road and Joliet Road, a 35 mph work zone speed limit is in effect. On I-294, a 45 mph work zone speed limit is in effect throughout the construction season.

The Illinois Tollway reminds motorists that the "Move Over Law" requires motorists to change lanes or to slow down and proceed with caution when passing any vehicle on the side of the road with hazard lights activated. If you see flashing lights ahead, please move over or slow down.

Illinois State Police have zero tolerance for drivers speeding in work zones or failure to comply with the Move Over Law. The minimum penalty for speeding in a work zone is \$250 with up to a \$25,000 fine and a 14-year jail sentence for hitting a roadway worker. Penalties for failure to slow down or move over for a vehicle on the shoulder with flashing lights includes up to a \$10,000 fine, 2-year suspension of driving privileges and jail time, in extreme cases.

About *Move Illinois*

The Illinois Tollway's 15-year, \$14 billion capital program, *Move Illinois: The Illinois Tollway Driving the Future*, is improving mobility, relieving congestion, reducing pollution, creating as many as 152,000 jobs and linking economies throughout the region. The first 11 years of *Move Illinois* is on schedule and within budget, delivering the rebuilt and widened Jane Addams Memorial Tollway (I-90) as a state-of-the-art 21st century corridor and opening a new interchange connecting the Tri-State Tollway (I-294) to I-57. Progress continues on projects addressing the remaining needs of the existing Tollway system, delivering the new I-490 Tollway Project and reconstruction of the Central Tri-State Tollway (I-294).

About the Illinois Tollway

The Illinois Tollway is a user-fee system that receives no state or federal funds for maintenance and operations. The agency maintains and operates 294 miles of roadways in 12 counties in Northern Illinois, including the Reagan Memorial Tollway (I-88), the Veterans Memorial Tollway (I-355), the Jane Addams Memorial Tollway (I-90), the Tri-State Tollway (I-94/I-294/I-80) and the Illinois Route 390 Tollway.

#